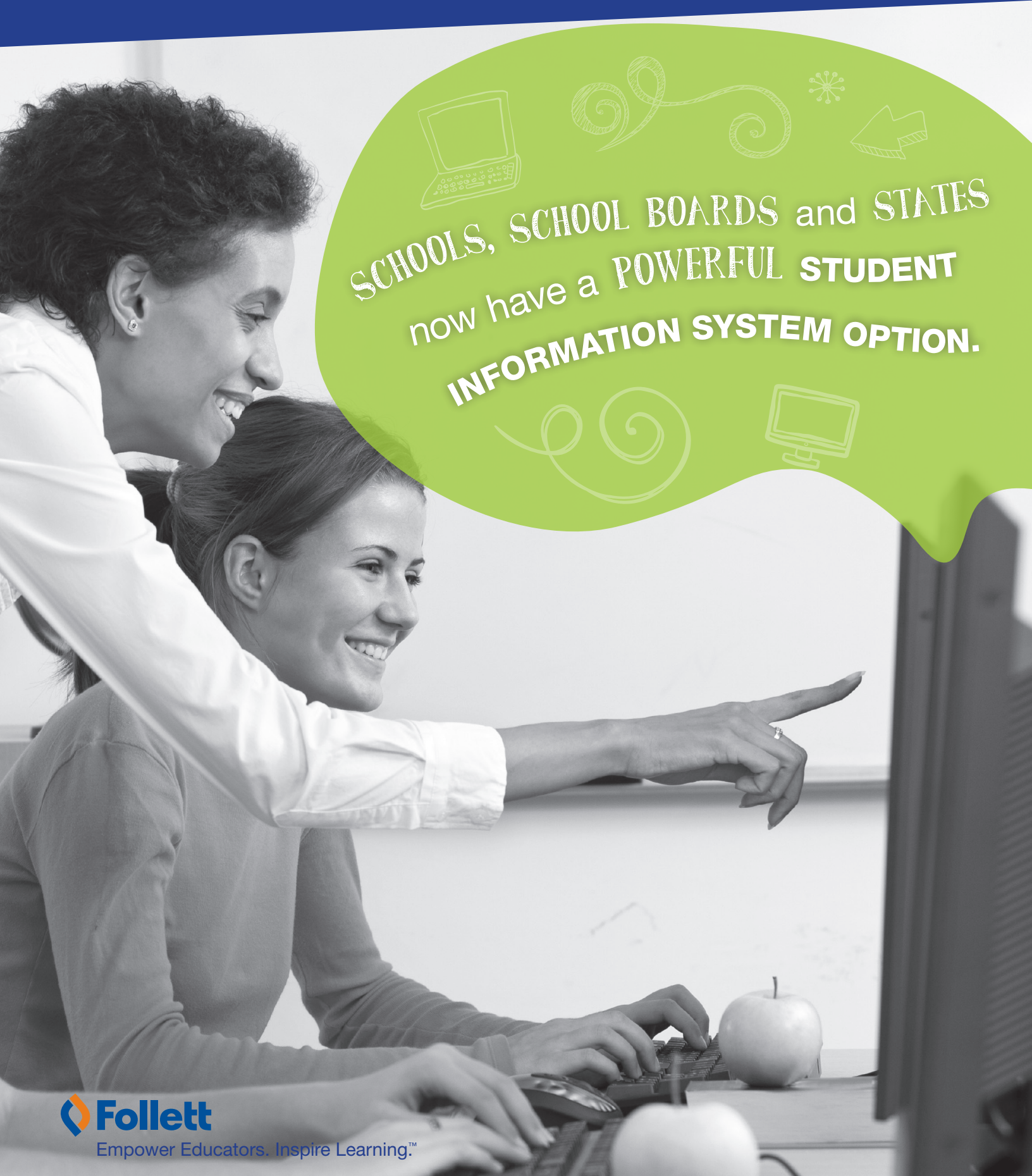


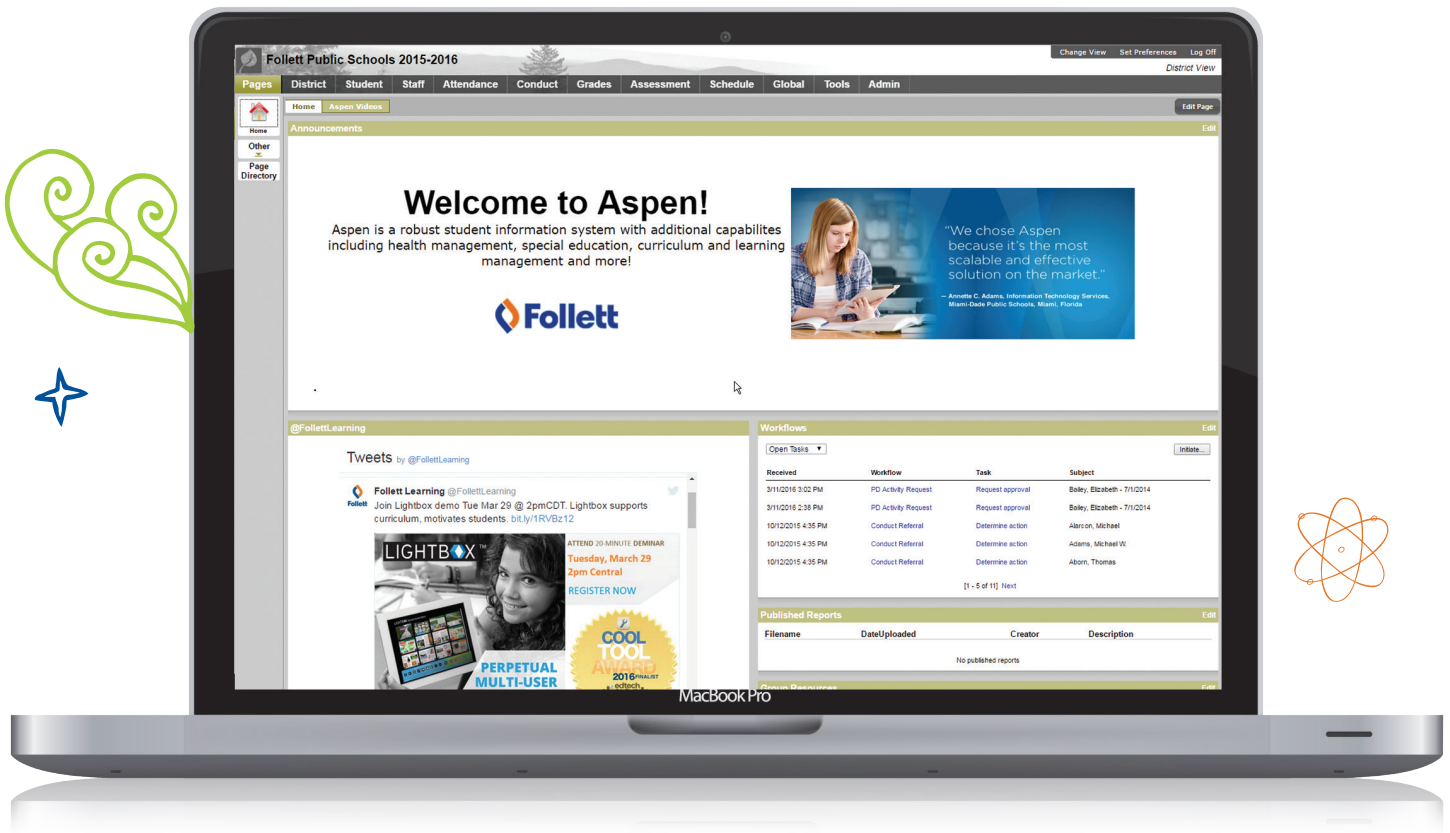
Follett Aspen™



SCHOOLS, SCHOOL BOARDS and STATES
now have a **POWERFUL STUDENT
INFORMATION SYSTEM OPTION.**

 **Follett**

Empower Educators. Inspire Learning.™



Are you tired of maintaining a string of inflexible Student Information System (SIS) applications with limited points of integration? Follett Aspen™ SIS is the solution you've been looking for.

Aspen is the perfect replacement to other systems that have limited points of integration and the inability to query, view, utilize and report on key data. It is the next-generation of SIS technology, 100% web-based and fully integrated with the following features:

- Student demographics
- Enrollment
- Attendance
- Master schedule builder
- Behavior and discipline
- Student at-risk identification
- Special education
- Curriculum and assessment
- Gradebook
- Professional Development
- Standards-based grading
- Student, teacher and parent portals
- User community (intranet)
- Department of Education requirements
- Elementary scheduling
- Collaboration and sharing tool
- Digital learning environment
- Integration capability with 3rd party applications (finance, busing, etc.)
- Mobile interface
- Quick letters and reports
- Workflows
- User-defined tables



With Aspen's flexibility, you finally have a "can-do" SIS

Schools and districts can work in the Aspen SIS development environment to customize workflows, procedures, reports, import/export interfaces – or have Follett customize them for you.

With the Aspen Data Dictionary, localization is simpler, more efficient and less costly. Schools can add tables, fields, screen templates and reports to ensure that the system adapts to their changing needs. Aspen's powerful architecture lets you can manage your SIS your way!





Encourage **COLLABORATION** and Engage **STUDENTS, PARENTS AND TEACHERS**

Web-based mobile support enables anytime, anywhere learning and instruction. Aspen helps:

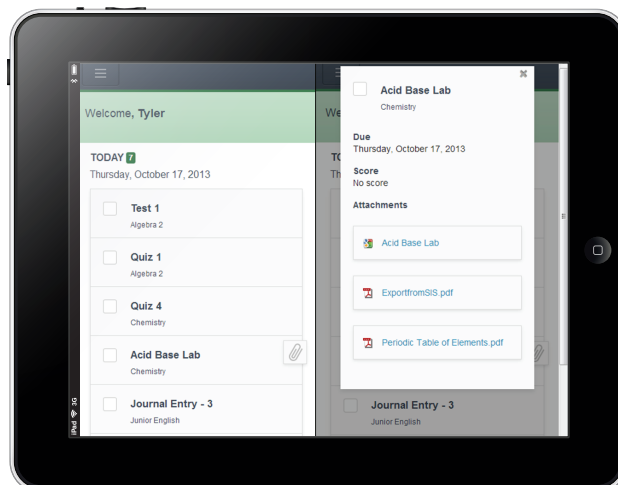
Students

- **Complete assignments**, take quizzes, discover resources and create web pages
- **Communicate** with teachers and peers
- **View class schedules** and current grades
- **Collaborate** by sharing Google Docs and uploading files

Parents

- **Get visibility** into daily classroom activities and current grades
- **Enjoy increased communication** with teachers
- **Engage** with child's activities, classroom learning and progress

Students can access assignments from anywhere on any web-enabled device.



Aspen is rich with actionable reporting and chart data, allowing you to:

- Use hundreds of modifiable system-defined reports
- Quickly and easily produce customized reports and charts with required data
- Save and reuse reporting formats
- Apply filters
- Identify and highlight at-risk students using criteria you define

Follett Public School District

Student List - Grade Level = 11

July 15, 2015

Page 1

Blank (9.70%)

Williams (23.41%)

Lewis (24.75%)

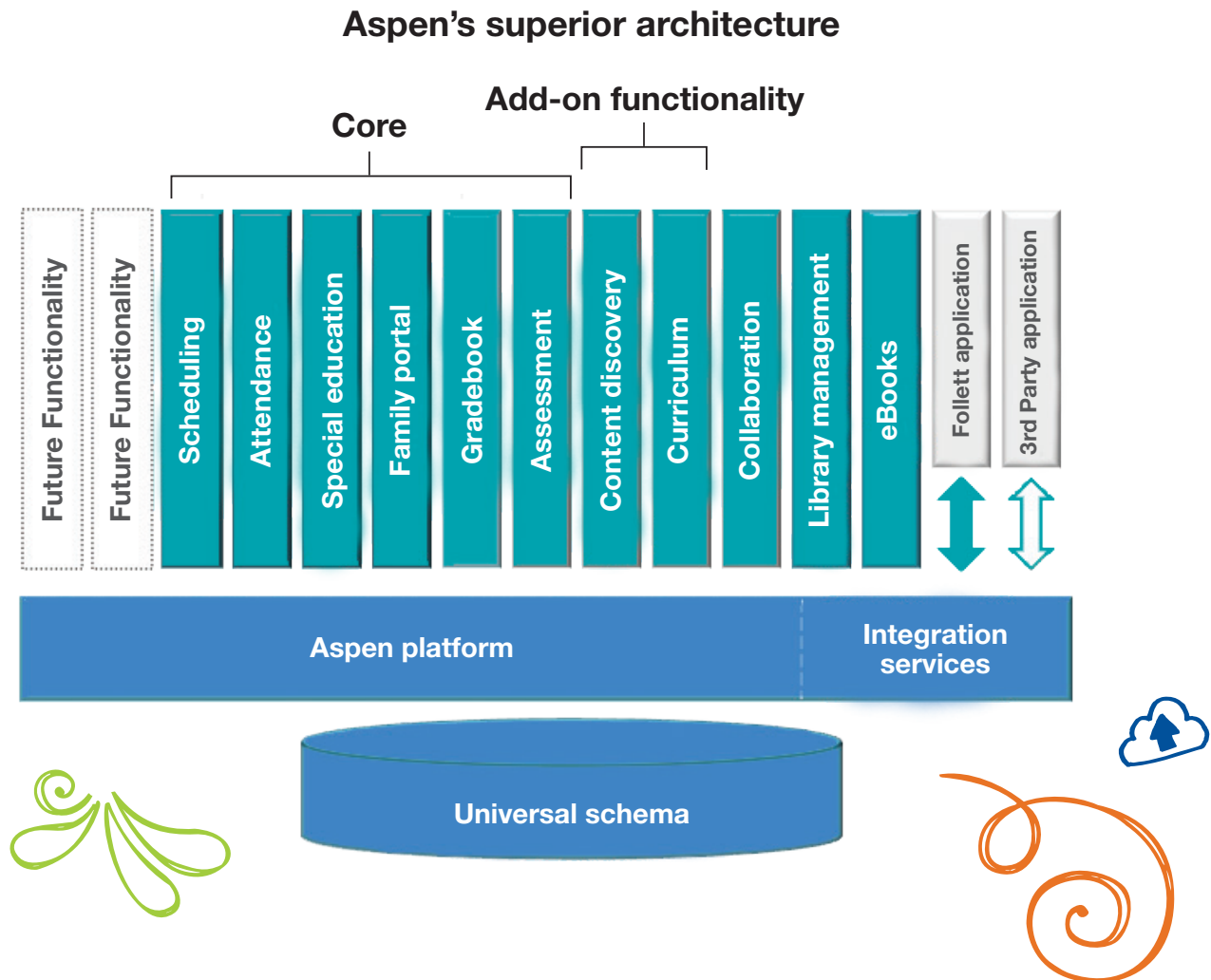
Smith (18.06%)

Nelson (24.08%)

Data Set	Counselor	Number	Percent
Blank	Blank	26	9.70%
Lewis	Lewis	74	24.75%
Nelson	Nelson	72	24.08%
Smith	Smith	64	18.06%
Williams	Williams	70	23.41%
Total	Total	269	100.00%



Aspen is the integrated SIS you have been waiting for.

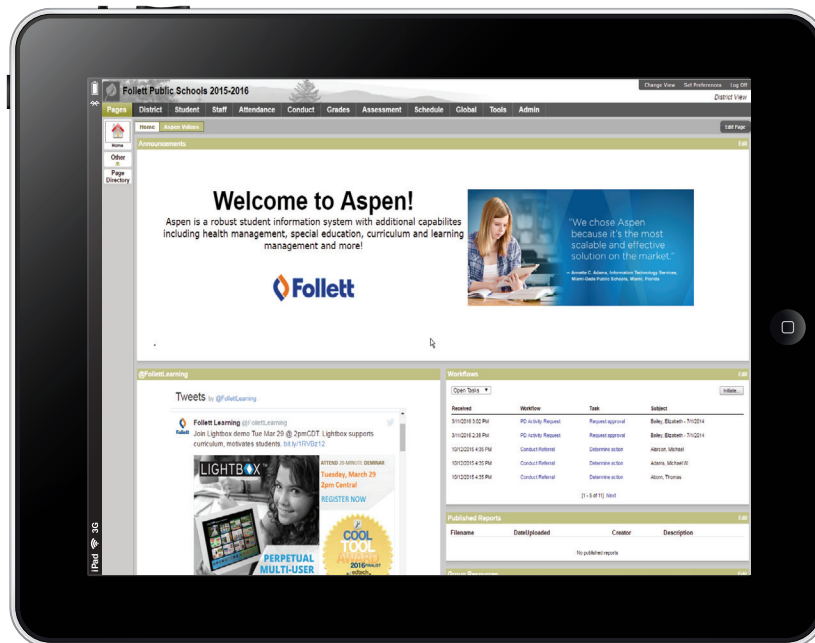


Does your current system hold data in different places, making access to that data difficult? Is performance an issue? It's time to move to Aspen, a modern SIS.

No matter how many students in your state, district or school, Aspen scales to ensure fast and robust performance in all configurations. Aspen has undergone extensive load testing and can meet the performance demands of the largest states and districts.



Aspen TECHNOLOGY is CURRENT and SCALABLE

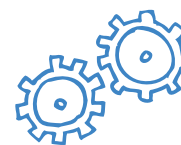


- Any device, any browser, no plugins.
- Designed for integrated school, district and state-level data management
- Revolutionary customer source code access to the workflow engine, report customization, procedures and import/export interfaces
- Tools for streamlined legacy SIS data migration
- Powerful Data Dictionary simplifies customization, even multiple languages
- Immediate Single Sign On (SSO) across all elements of Aspen
- Supports MySQL and MS SQL database options and Active Directory
- Architecture that's flexible enough to meet your present and future needs





The screenshot displays the Aspen instructional planning center interface. At the top, there are navigation tabs for 'Options', 'Reports', and 'Help'. Below this is a calendar view for the week of April 24-30, 2014. The calendar shows various tasks and assignments, including 'Chapter 21-3', 'Review Quiz TC', 'Homework/Classwork 9', 'Classwork 44', 'Quiz 45', and 'Review for Test'. The left sidebar contains a list of course options, such as 'OA320 Chemistry H & Lab', 'OA321 Chemistry C & Lab', and 'OA356 Forensic Science'. The bottom section shows a search results page for 'Glaciers' with several articles listed, including 'Extreme ice now: vanishing glaciers and changing climate' and 'A world without ice'. A 'My Resources' panel on the right side of the interface lists various folders and resources, including 'Honors Chemistry' and 'Unit 1' through 'Unit 9'.



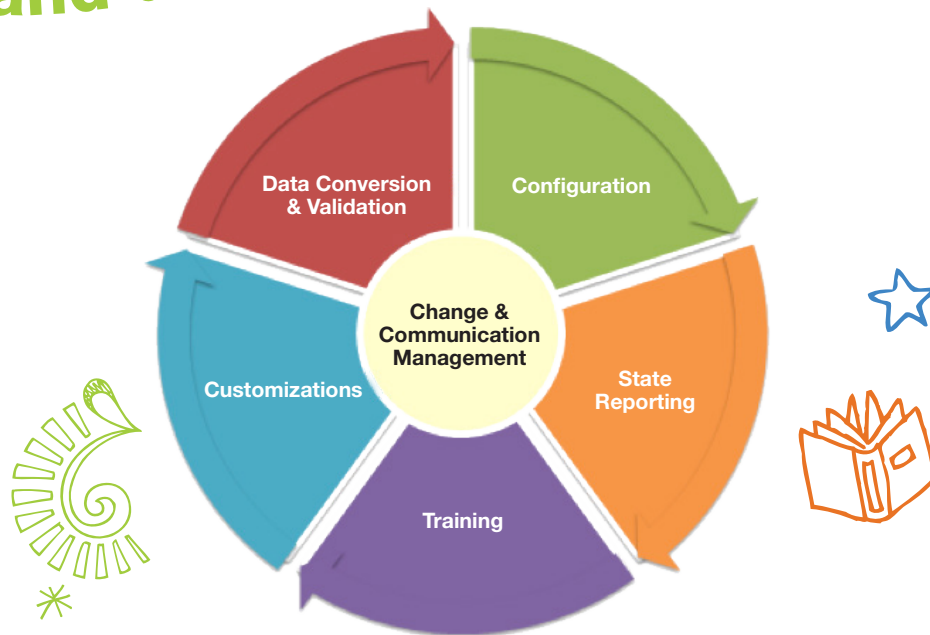
Aspen is an instructional planning center, a digital repository and much more .

Aspen has an open architecture that supports third-party software integration, SIF, Active Directory and the like. New functionality merges the Aspen SIS and instructional platform without costly SIF or other integration headaches.

In addition, Aspen has a fully-integrated Special Education platform, Curriculum and Standards and digital learning tools – making it a cost-effective and efficient learning solution.



Ensuring Success: CHANGE MANAGEMENT and COMMUNICATION PLANNING



- Follett's Change Management Process incorporates stakeholder analysis and benefit analysis, alongside effective communication management. These are critical success factors in any SIS conversion and implementation.
- The Follett team will be by your side throughout the first year and beyond to minimize stress and maximize your success.
- Aspen was designed with a unique data migration capability that reduces the risk and pain associated with a change of system. Technology has moved on. You do not need to stay on an old system for fear of the changeover.
- If your SIS is not supporting your teaching and learning initiatives, then talk to us today!





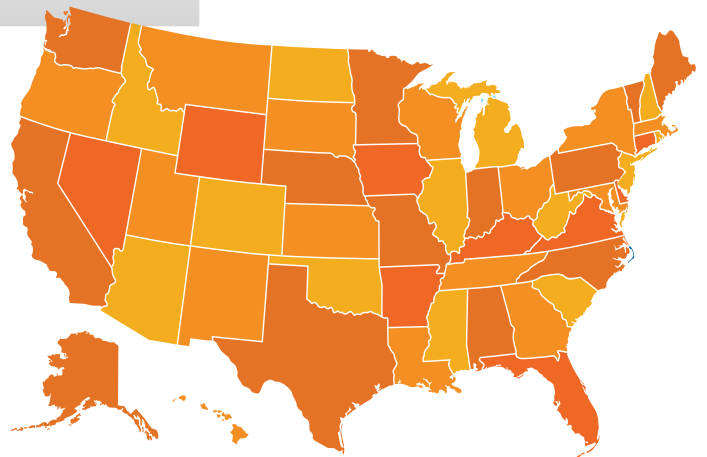
ASPEN COMMUNITY

Visit our website and explore the Aspen Community. You'll see how Aspen is woven through all aspects of education – making your job easier! As you navigate the Aspen Community, click on each educational stakeholder to see how Aspen can help support teaching and learning.

follettlearning.com

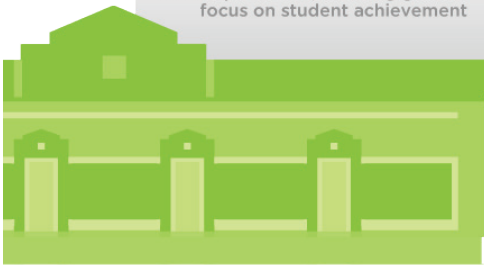
STATE

Aspen's architecture offers a state-wide, single-database, enterprise SIS solution



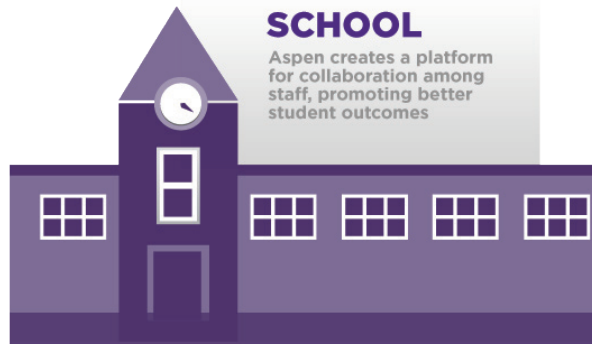
DISTRICT

Aspen streamlines and connects all district processes, allowing greater focus on student achievement



SCHOOL

Aspen creates a platform for collaboration among staff, promoting better student outcomes



HOME

Aspen helps students continue learning beyond the classroom while keeping parents in the loop





Who is Follett?

Follett has been at the forefront of education for more than 140 years. Today, our innovative, integrated solutions provide a powerful environment that simplifies learning – helping you and your students transition to a digital world.

As an education solutions provider, Follett has products and services that span well beyond Aspen SIS. Schools all over the world choose our award-winning Follett Destiny® Library Manager™ and Follett Destiny® Resource Manager™ systems. Titlewave®, our collection development and analysis tool, provides access to millions of titles, in print and digital format, to support curricular needs throughout your school.

To learn more about Aspen or any of Follett's education solutions, contact us today!

Transform your information into powerful knowledge at [folletlearning.com](https://www.folletlearning.com)

info@folletlearning.com | 877.899.8550

If outside the US, international@follett.com





Follett Aspen™



Follett School Solutions, Inc.
1340 Ridgeview Drive, McHenry IL, 60050
info@follettlearning.com | 877.899.8550
If outside the US, international@follett.com