



Sales forecasting in the retail industry based on Artificial Intelligence.



Sales Forecasting



Allocation & Automatic Replenishment



Continuous Anomaly Detection



Demand Forecasting



Demand Management



Real-Time Performance Reporting

Automatic generation of replenishment commands for **optimal stock-up of stores**

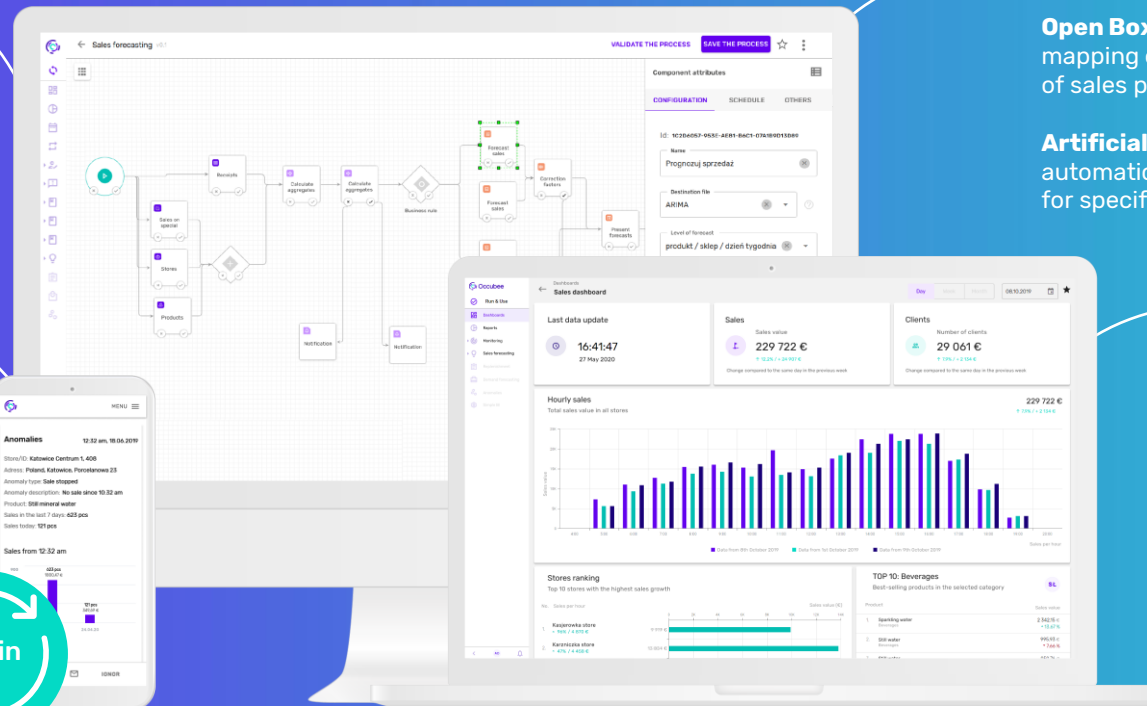
Automatic generation of orders for suppliers to ensure **optimal stock levels in warehouses**

Alerts in case of anomalies e.g. stopping the sale of a product in a given store

Ongoing **monitoring** of business and technological processes

Mobile application for accessing information anytime and anywhere

Data updates **every 10 minutes**



Open Box mapping of the full complexity of sales processes in the system

Artificial Intelligence automatic generation of sales forecasts for specific products and stores

Quick deployment of **dashboards and reports** based on predefined retail components

Data Lake gathering and association of data from many different sources

Automatic data collection and processing **in the cloud**

Platform available **in SaaS model**

Real benefits

5% to 7%

increase in sales by
minimizing out-of-stocks

3% to 7%

decrease in losses
by reducing overstocks

30% to 50%

reduction of average
out-of-stocks in stores

2 to 3 months

short time
implementation process

Stages of cooperation



We understand well the specifics of the retail industry and we know how to differentiate the needs of each sector. That is why we always start designing a dedicated platform by holding **business and technology workshops** with the client. During the workshops we analyze the situation, identify opportunities in the business sense and determine which available data and processes can be optimized by using Artificial Intelligence.

WE SINCERELY INVITE YOU TO WORK WITH US

Kamil Stryczek | Business Development Manager | M: +48 533 579 774 | E: kamil.stryczek@3soft.pl
Łukasz Grzywa | Product Manager | M: +48 531 770 906 | E: lukasz.grzywa@3soft.pl

www.occubee.com