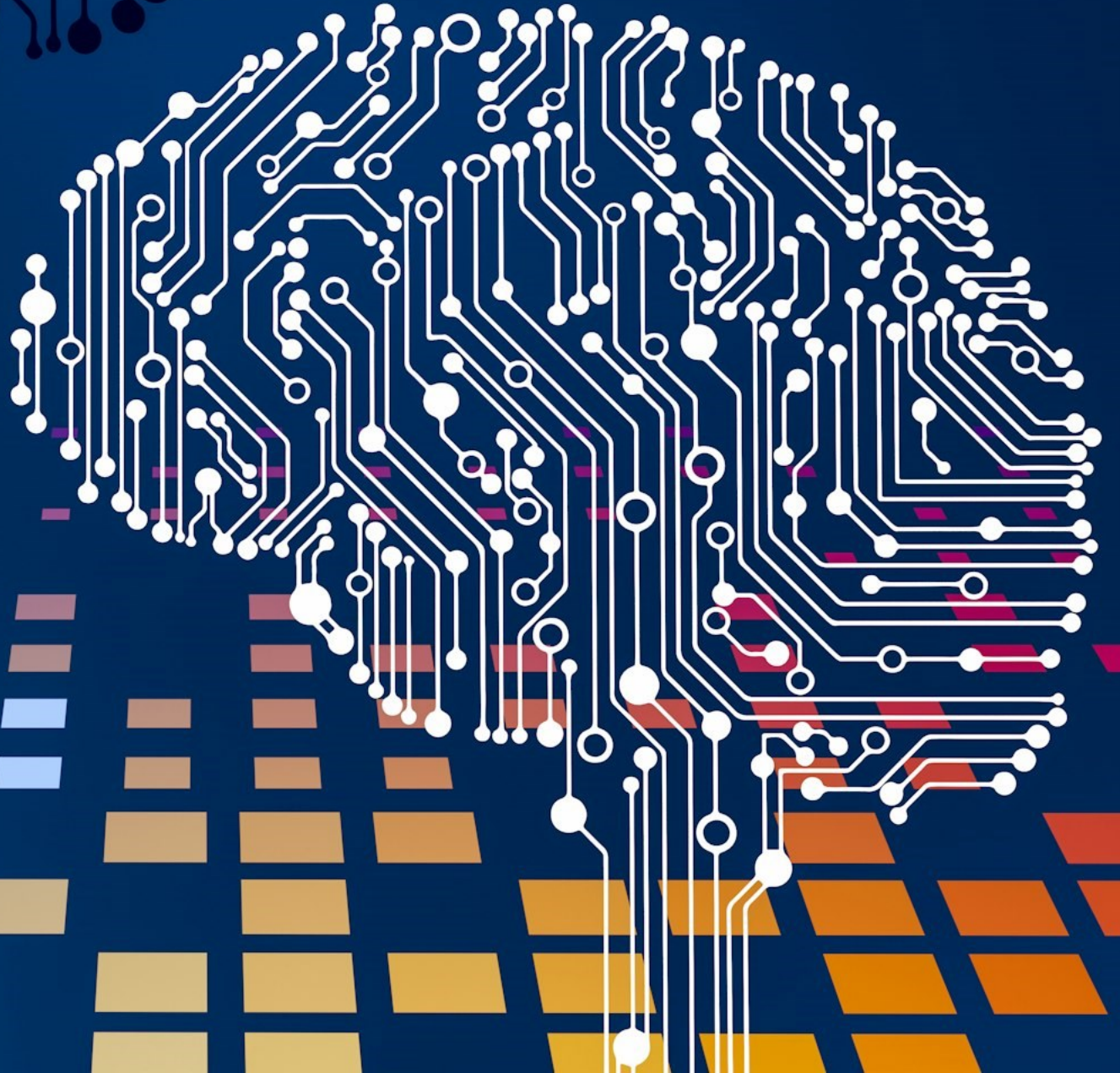


# empower<sup>®</sup> AI Assistant Overview



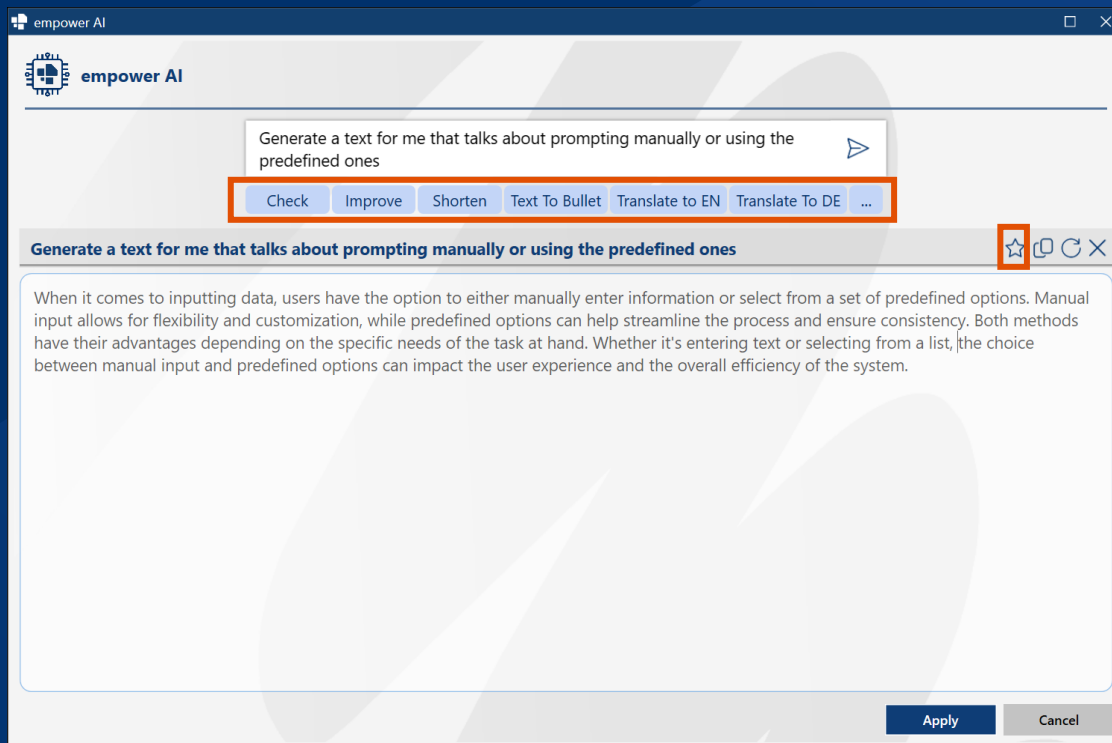
# Utilize the magic of AI with empower®

The empower® AI Assistant effortlessly creates polished text directly in PowerPoint, Word, and Outlook.

It leverages the power of Azure OpenAI to ensure data security.

Whether you want to improve text with predefined prompts or generate new content with custom prompts, this easy-to-use application empowers everyone in your organisation to use AI in their daily tasks.





# Leverage predefined prompts

Not every user is a trained prompt engineer. That's why we provide centralised, enterprise-wide prompts to streamline the user's workflow.

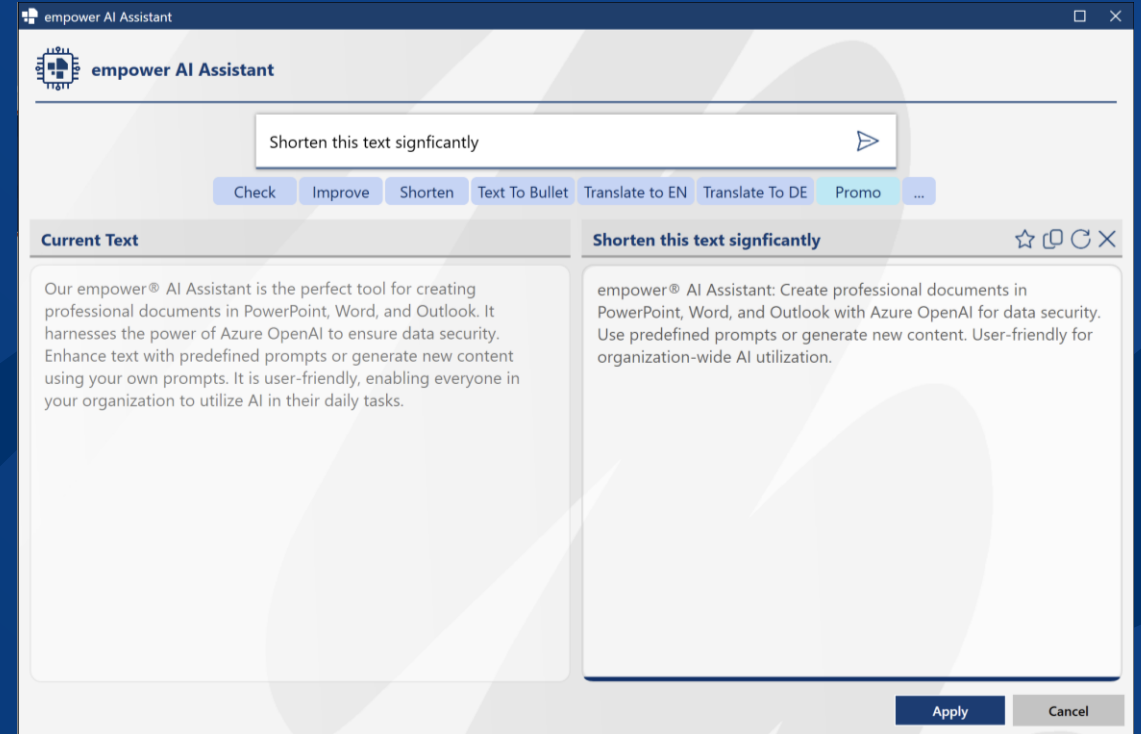
These standard prompts can be customised to meet your organisation's specific needs.

And if you have a prompt wizard on your team, they can easily bookmark and save their own prompts for future use.

# Easily review the result

Once you have used the empower® AI Assistant to revise or improve an existing text, you can easily assess the result in the preview window in our user interface.

If you are not satisfied, you can change the prompt or regenerate the output. You can even move the output from right to left to use a different command on the generated text. Delete or manually modify words for additional refinement before clicking Apply.



# Feature Overview and how it compares with Microsoft Copilot



Features	empower® AI Assistant	Microsoft Copilot
<b>Direct changes in Office apps</b>	The AI output will directly be inserted into the shapes in PPT without losing formatting.	Copilot cannot directly change text inside shapes.
<b>User-specific prompts</b>	Users can store prompts that are personally helpful to them and reuse them at any time.	Users cannot store self-designed prompts in Copilot
<b>Company-wide prompts</b>	Users benefit from centrally defined prompts that can be run with one click.	Copilot Labs provides standard prompts, but not company-specific prompts.
<b>User interface</b>	Users see the results next to the input and can easily compare it.	Copilot automatically replaces the text and makes a comparison cumbersome
<b>Multi-shape &amp; slide support</b>	Users can iterate through multiple shapes in one go.	Copilot does not support a multi-shape concept
<b>Performance</b>	An average query only takes 1-2 seconds.	Copilot often needs 5-10 seconds to process the prompt
<b>Pricing</b>	For 1.000 users: 2,44 € / user & month For 10.000 users: 0,67 € / user & month	Costs approx. 20-30 Euro per user / month

# empower® AI Assistant Architecture

## SaaS (Standard)

The empower® AI Assistant is hosted in our Azure environment and is using the Azure OpenAI Services through us.  
Highlights:

- › Flat fee as the OpenAI costs are included in the leasing fee
- › No Azure installation and update work required from your IT department

## Alternative 1: Hybrid\*

The empower® AI Assistant is hosted in our Azure environment and is using your Azure OpenAI service.

Highlights:

- › You can use your own (trained) Azure OpenAI instance
- › No Azure installation and update work required from your IT department
- › Variable costs for your Azure OpenAI instance

## Alternative 2: Your Cloud\*

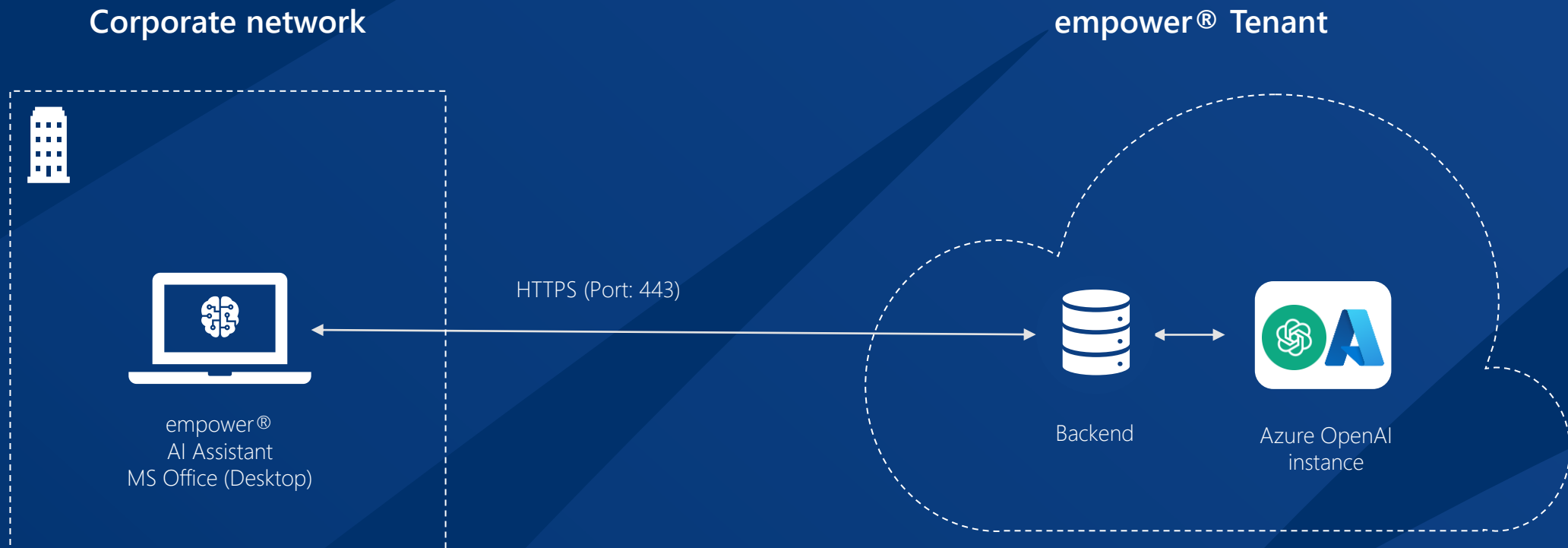
The empower® AI Assistant is hosted in your Azure cloud and your Azure OpenAI service is used

Highlights:

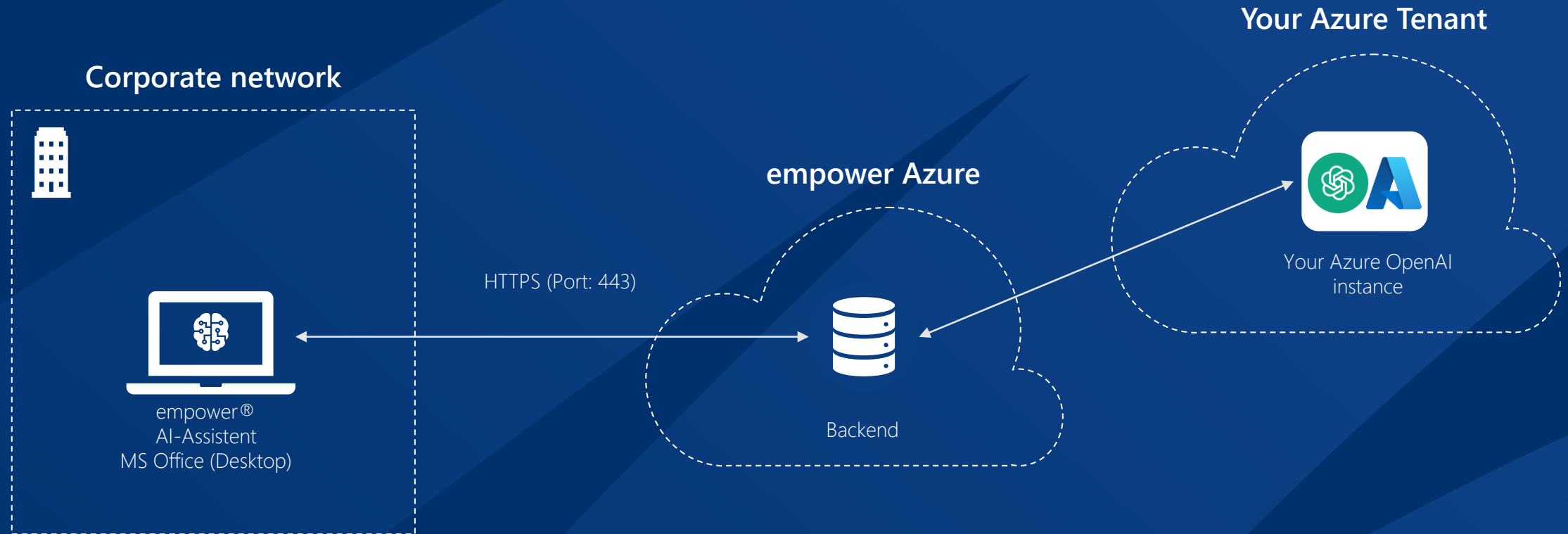
- › Everything is in your cloud and your (trained) OpenAI instance can be used
- › You need to update the backend regularly with our help
- › Variable costs for your Azure OpenAI instance

\*Alternatives 1 and 2 are available for installations with 1.000 users or more.

# Architecture for SaaS (Standard)

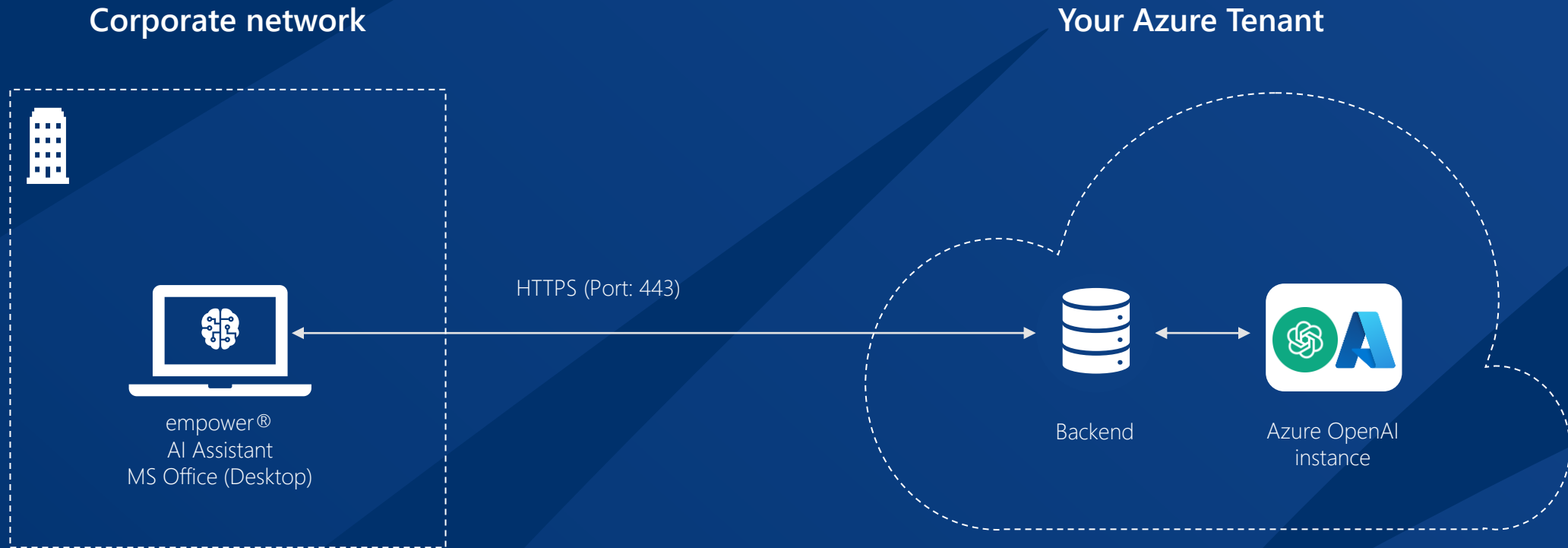


# Hybrid Architecture for Alternative 1





# Architecture for Alternative 2



# Data, privacy, and security for Azure OpenAI Service

Your prompts (inputs) and completions (outputs), your embeddings, and your training data:

- ✗ are NOT available to other customers.
- ✗ are NOT available to OpenAI.
- ✗ are NOT used to improve OpenAI models.
- ✗ are NOT used to improve any Microsoft or 3rd party products or services.
- ✗ are NOT used for automatically improving Azure OpenAI models for your use in your resource (the models are stateless, unless you explicitly fine-tune models with your training data).

- ✓ Your fine-tuned Azure OpenAI models are available exclusively for your use.
- ✓ The Azure OpenAI Service is fully controlled by Microsoft; Microsoft hosts the OpenAI models in Microsoft's Azure environment and the Service does NOT interact with any services operated by OpenAI (e.g. ChatGPT, or the OpenAI API).

**empower** 