



COMMANDCENTRAL AWARE

IMPROVE REAL-TIME SITUATIONAL INTELLIGENCE



REAL-TIME SITUATIONAL INTELLIGENCE

CommandCentral Aware provides a complete operating picture, integrating real-time intelligence in the command center to remotely assist officers in the field. Simplify your operational view by consolidating your resources into one single pane of glass. Support officer safety by monitoring real-time alerts and accessing nearby video feeds when incidents occur.



LOCATION, TRACKING & MAPPING

SIMPLIFY INFORMATION. MAKE BETTER DECISIONS.



MONITOR ACTIVITY FROM ANYWHERE

View all of your location-based data together, in real-time, on a single map display. This common operating picture can be accessed anywhere, from any internet-connected device.



ACT WITH THE NECESSARY CONTEXT

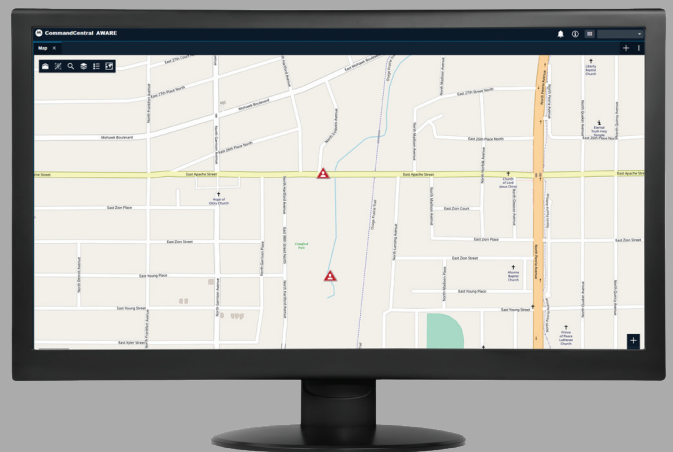
Communicate a more informed response to a critical incident and enhance responder safety for those in the field by accessing a common operating picture through CommandCentral Aware - directly from your agency's map.



COLLABORATE WITHOUT DISTRACTION

Control specific viewing permissions based on groups of users to ensure a focused response from every team member during a critical event. Filter your view to only the datasets you need in the moment.

ACCESS DATA FROM
CAD THROUGH
COMMANDCENTRAL AWARE,
ENHANCING THE COMMON
OPERATING PICTURE.



FEATURES:

Unified Mapping: Utilizing a common Esri base map, geographically locate real-time events such as CAD incidents, device and unit location, alert and alarms, tactical decision data and camera locations. Incorporate other Esri-based map layers from your agency for enriched spatial orientation such as property boundaries, landmarks, buildings, and asset locations. In addition, streaming and stationary weather layers are provided to enhance visual situational awareness. Organize your devices through group management to further refine ownership to adhere to logical inter agency and intra agency configurations. Manage the content seen by these agencies via groups of users provisioned and authorized to see specific mapping layers.

Desktop & Mobile Accessibility:

Work seamlessly from desktop to mobile. CommandCentral Aware is accessible via web browser on any computer as well as from any tablet or smartphone with an internet connection.

Data Layer Filtering: Show or hide data layers, such as CAD incidents, by selecting or deselecting them in the data layer panel, ensuring your teams are seeing only what they need in that moment. Data layers can also be prioritized to ensure certain information takes visual precedence on the map.

Critical Information Display: Associate critical information with each event or resource on the map display.

Team-Based Permissions: Restrict what personnel see based on what their team needs to be most effective, while still ensuring that consistent and relevant information is being referenced from a shared common operating picture.

“View-Only” Information Access:

Ensure workflows are unhindered by access to information in the simplest form possible.





LOCATION, TRACKING, MAPPING & ALERTS

KEEP OFFICERS AND CITIZENS SAFE ON THE STREETS



RESPOND QUICKLY TO ESCALATING INCIDENTS

Responder alerts automatically show the command center what's happening to officers during an incident, whether that be an emergency, weapon drawn, vest pierce, man down alerts, and more. Alerts showing the location and type of incident on the consolidated map help dispatchers enhance situational awareness and improve officer and citizen safety.





FEATURES:

CommandCentral Aware automatically informs the command center that a situation has escalated without further action by the officer. Alerts indicating a weapon draw, vest pierce or other emergency display the location and type of incident in real time on the consolidated map, helping dispatchers provide immediate support and improving officer and citizen safety.

Weapon/Conducted Electrical Weapon (Stun Gun) Drawn Alert:

Sensors can be retrofitted to the most common holsters used and will send notifications when an officer un-holsters and re-holsters a weapon.

Weapon Fired Alert (Glock Handguns Only):

This sensor can be retrofitted to certain handguns to send an alert that the weapon has been discharged. The sensor is located in the grip of the Glock.

Vehicle Impact Alert: When a responder vehicle, equipped with APX 8500 radios, experiences significant impact, an emergency alert will notify the command center of the situation and location.

Man Down Alert: When a responder vehicle, equipped with APX 8500 radios, experiences significant impact, an emergency alert will notify the command center of the situation and location.

Vest Pierce Alert: When a piercing event is detected, such as a shot or stab, an emergency alert is transmitted to notify command staff that a responder may be incapacitated and needs help. Insert sensors into existing body armor.

Si500 Contextual Activation:

CommandCentral Aware activates Motorola Solutions' Si500 Video Speaker Microphone, a body-worn camera solution used for capturing, storing, and analyzing crucial video evidence, to start recording for post-event analysis.

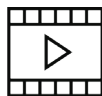


VIDEO INTELLIGENCE

HAVE EYES ON A SCENE WITHIN SECONDS

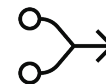


IMPROVE SITUATIONAL AWARENESS BY ACCESSING VIDEO FEEDS TO NEARBY ALERTS ON COMMANDCENTRAL AWARE'S CONSOLIDATED MAP. SAVE SECONDS IN YOUR RESPONSE AND IMPROVE RESPONDER SAFETY.



ENHANCE RESPONSE THROUGH REAL-TIME VIDEO

Improve response time and help officers stay focused with CommandCentral Aware's real-time video access and notifications, which allow PSAP fusion operators or intelligence analysts to access nearby video feeds from within the consolidated map for greater visibility into an escalating situation. CommandCentral Aware brings users' attention to key video content, enhancing officer safety and boosting productivity.



STREAMLINE VIDEO MANAGEMENT

Simplify your operational view by bringing all disparate video solutions into one single, consolidated screen.



FEATURES:

Geospatial Event Mapping: Include camera locations, CAD incidents, personnel status and location, open-source data alerts, sensors and more, on a single map that can be customized with any of your agency's other data layers.

Activity Monitor: View a real-time feed of alerts and incident occurrences as they populate on the map. Each event can be viewed in detail with information drawn from additional data sources pertaining to that specific event.

Rules Engine: Automate workflows by associating related data together from disparate systems to get a comprehensive picture of the incident or threat occurrence. This can include video sources, related open-source data alerts, a CAD incident, sensor alarms, and more.

Real-Time Video Streaming: Virtually patrol your community and quickly get eyes on the scene of an event by viewing cameras simultaneously from fixed or mobile video feeds via any video management system. Easily reference the video source, date, time, and location as well as customize camera groups for quicker access to particular locations.

Security Compliance: Rely on applications secured and compliant to all major security standards including CJIS, FedRAMP, and FISMA.

Improve productivity and easily manage evidentiary files by only storing and tagging incident-related video through CommandCentral Vault.



MOTOROLA SOLUTIONS' CROSS-PRODUCT INTEGRATIONS MULTIPLY THE VALUE OF OUR SUITE



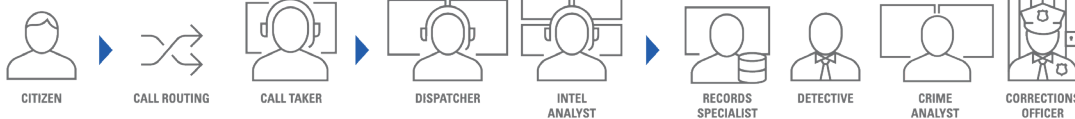
Increase the value of your CommandCentral Aware investment through product integrations that accelerate workflows, improve ease of use, and augment decision making:

- CallWorks
- Spillman Flex CAD
- PremierOne CAD
- MCC 7100 IP Dispatch Console
- APX Two-way Radios
- Mass Notification
- Avigilon Video Solutions
- CommandCentral Vault

EMERGENCY CALL HANDLING

COMMAND & CONTROL

RECORDS & EVIDENCE



PUBLIC SAFETY BIG DATA PLATFORM
 Citizen Tips | Calls For Service | IoT Alerts | Video | Reports | Audio Logs | Statements

For more information about CommandCentral Aware, visit www.motorolasolutions.com/aware.



Motorola Solutions, Inc. 500 West Monroe Street, Chicago, IL 60661 U.S.A. motorolasolutions.com

MOTOROLA, MOTO, MOTOROLA SOLUTIONS and the Stylized M Logo are trademarks or registered trademarks of Motorola Trademark Holdings, LLC and are used under license. All other trademarks are the property of their respective owners. © 2019 Motorola Solutions, Inc. All rights reserved. 03-2019