

# Semantic Invoice Processing Solution

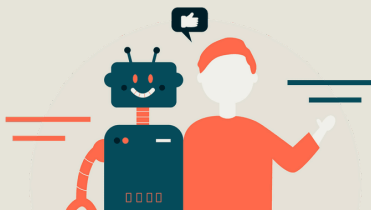
The Semantic Invoice Processing Solution is a cutting-edge solution designed to revolutionise invoice management. By leveraging advanced AI technologies, it offers unparalleled accuracy and efficiency in extracting and processing invoice data. This solution minimises manual intervention, enhances data accuracy, and provides a scalable, cost-effective approach to handling invoices from any vendor worldwide.

## Business Challenge:

Many organisations currently rely on Optical Character Recognition (OCR) to digitalise invoices and/or manually input information into their ERP systems. However, these methods are often hampered by poor-quality scans and are prone to human errors, leading to increased costs and inefficiencies. Even when automation systems are deployed, these systems lack the semantic understanding to differentiate between various types of invoice data, preventing them from extracting advanced analytics and enhancing decision-making capabilities.

## Crayon's Solution:

Crayon's Semantic Invoice Processing Solution utilises Azure AI Document Intelligence to extract data from invoice documents. This data is then processed through Crayon's proprietary pipeline of language models from the GPT-family to achieve highly accurate information extraction with a lower error rate compared to traditional methods. This advanced solution provides a semantic understanding of line items, quantities, and product/service information, offering arbitrary classification and significantly improving accuracy and efficiency.



## Outcome:

- Achieve near 100% accuracy in information extraction from invoices.
- Gain a semantic understanding of line items, quantities, and product/service information.
- Enhance the efficiency and accuracy of information extraction from semi-structured documents.

## Key Solution Features:

- **Input:** Capable of handling any vendor-specific invoice format globally.
- **Output:** Provides extracted data formatted to the desired schema.
- **Memory-less Solution:** Ensures input documents are not stored, maintaining data privacy.
- **Elasticity:** Scalable to process thousands of documents per hour.
- **Training:** No AI training required for extracting invoice information.
- **Development Efforts:** Zero code, zero input platform, and no upfront costs.
- **Connectors:** Includes 100+ pre-built Power Automate connectors.
- **Identity & Access Management:** Integrates with Microsoft Entra ID.
- **Anomaly Detection:** Binary classification and description of anomaly for each invoice

## Gains:

- Achieve 98%+ correct entity extraction from invoices with no human intervention.
- Ensure consistent extraction regardless of volume.
- Reduce human interventions to edge cases in the target downstream system.
- Enable real-time processing of each invoice, significantly reducing cycle times.
- Minimise overhead costs, with the cost per invoice processed reduced to the cost of the solution.

Contact our **Crayon Data and AI Experts** to find out more.

## Crayon Global Data & AI Practice

10 Years of Experience with Applied AI  
+300 Applied AI projects delivered so far!

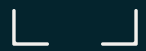
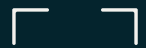
Enterprise ML Expertise  
+2500 models are running with our MLOps Framework for Enterprise Data Science

Globally Recognised Microsoft AI Expert  
Microsoft AI & Machine Learning Advanced Specialisation Partner (an elite club of only 14 such Global partners)  
Partner of the year for Data & AI (2019 & 2022)

47 Countries, 4 AI CoE locations = 1 Global CoE  
Are being established to serve the increasing global demand

Proven Responsible AI Framework 'CRAIG'  
Tailor services to individual customer need to maximise business value, with our Crayon Responsible AI Guidelines

Specialised Language Technology Team  
+100 NLP projects delivered, 35 Language Models projects done so far!



Scan to see Azure Marketplace listing here