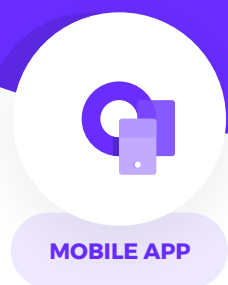


PCG Analytics enables

**a strategic decision-making and reporting inside and outside of the university.**

The service is based on Power BI - a cutting edge reporting and dashboard technology provided by Microsoft.

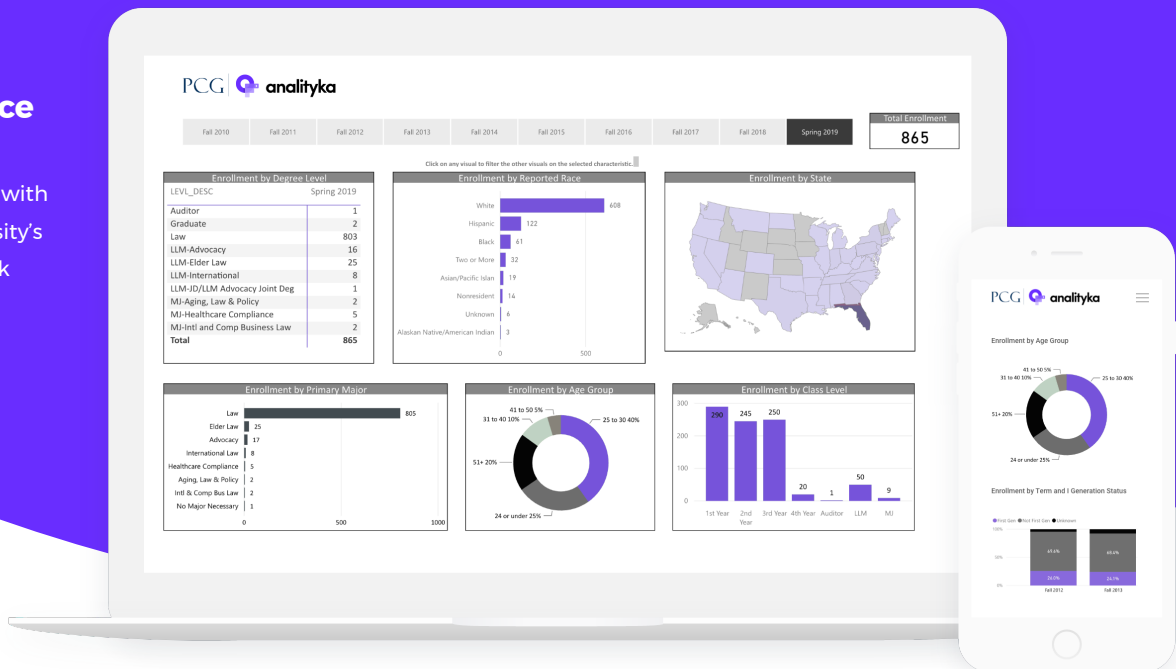
PCG Analytics integrates data from dispersed university data sources in one place.



PCG Analytics is a part of **educloud**, a new generation of IT solutions for universities concentrated on the Students and their needs.

## User interface

consistent with the university's brand book



## Benefits

### Management

- › Role-based access to Key Performance Indicators (KPIs) of the university
- › Catalogue of ad-hoc reports, not requiring technical skills from the end users
- › Constant access to all key institutional data through web and mobile application

### Administration

- › Strategic management of access to information in the university based on roles and permissions
- › Comprehensive reporting and data analysis capabilities
- › Support of process and project-based management

### IT Department

- › Ability to respond to data requests from university stakeholders with just a few clicks
- › Integration of dispersed university data in one application
- › Improved control over quality and security of data stored by the university

## Functionality

- Intuitive web and mobile interface consistent with the university's brand book
- Rector's dashboard allowing for quick access to Key Performance Indicators
- Catalogue of sample, ad-hoc reports and ability to create custom reports
- Intuitive sorting and filtering through data
- Standardized data model allowing for easy integration with external data sources
- Analysis of data reported to POL-on and other ministerial systems
- Building advanced reports without technical or programming skills
- User roles and permissions management

[SCHEDULE A DEMO](#) >

At your university or through a video call.  
Contact us!