

Connect

Stantec.io

*Imagine the possibilities of digital-assisted
science, engineering, and design.*



Why Connect?

Stantec.io

Strong Foundation

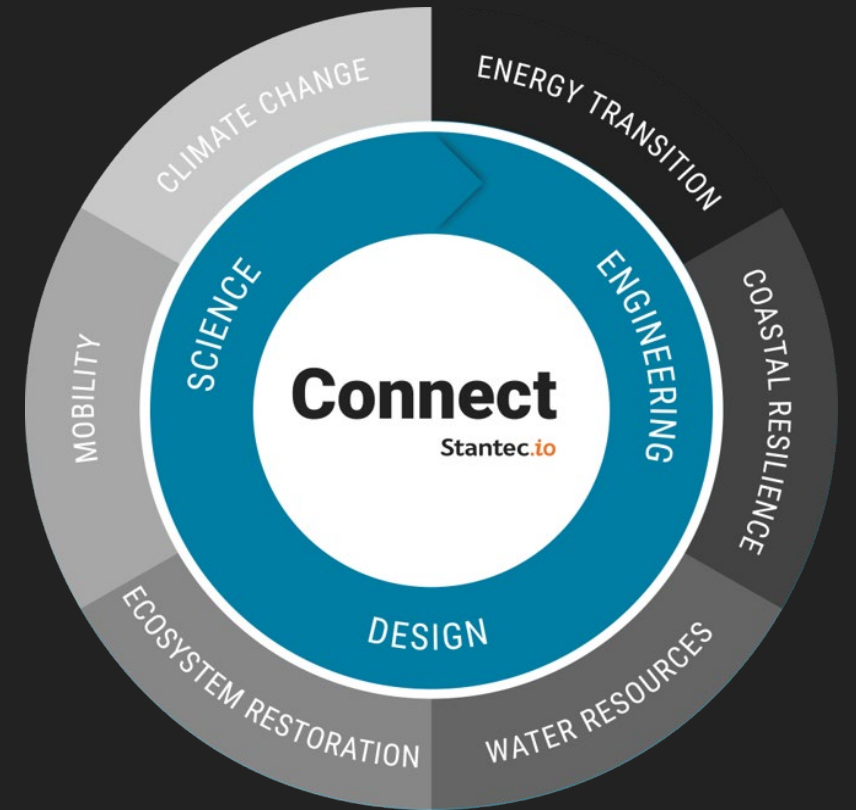
Powerful cloud-based platform rooted in science, engineering, and design. A great combination of human and machine.

Open, yet secure

Information flows safely and securely between your systems, open data sources, and our platform, using common data formats and protocols.

Automated

Cloud-based Microsoft Azure components built around our principles of security, reliability, deliverability, scalability, maintainability and customer value.





Connect

Stantec.io

Four modules designed to deliver digital science and engineering workloads

CONNECT



Agility

Run models in parallel with elastic compute



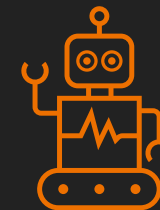
Insight

Apply machine learning and analytics to data



Engage

Visualize data in a variety of formats



Operate

Safely interface with IoT and Edge devices

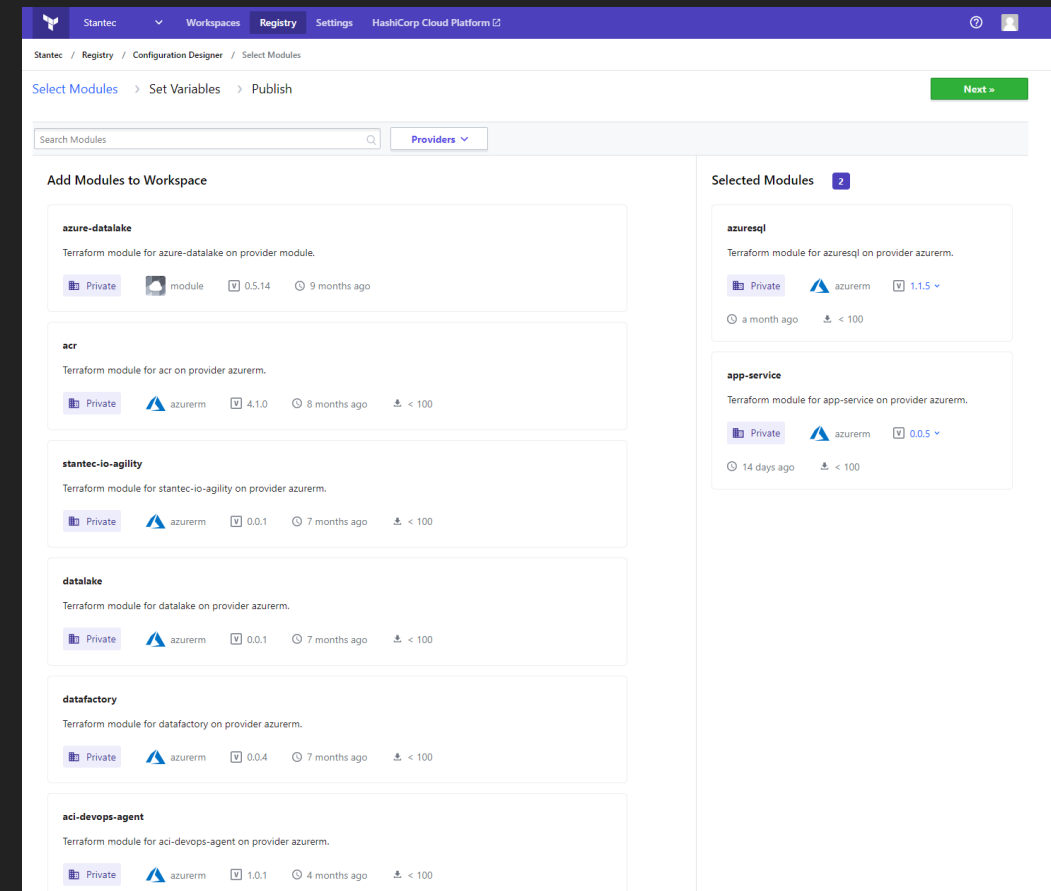


Connect

Stantec.io

Access to a catalog of pre-configured templates

- **Self Service Infrastructure:** Enable developers to easily provision infrastructure on-demand with a library of versioned, approved infrastructure designed for science and engineering workloads.
- **Cloud Compliance and Management:** The Connect private module registry provides customized modules—versioned, validated and proven—to deliver science, engineering, and design.
- **Infrastructure as Code (IAC):** Increase operator productivity and developer agility with the design configuration wizard tool that generates IAC code in a compliant and secure manner.





Connect

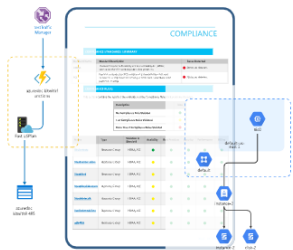
Stantec.io

Integrations with the most popular providers to manage digital science and engineering solutions

CONNECT

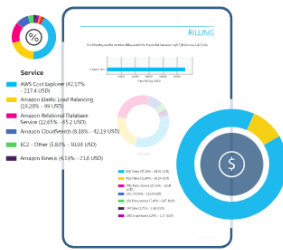
Audit, Compliance & Security Reports

Truly understand what is deployed in your cloud environment and easily find misconfigurations and potential security threats.



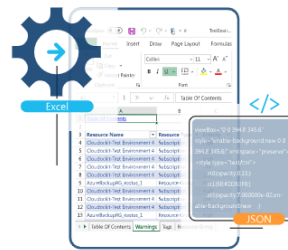
Cloud Spending

Easily keep track of your cloud spending and never exceed your budgets.



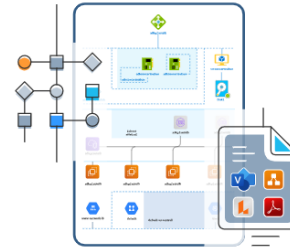
Asset Normalization & 3rd Party Integration

Obtain a complete extraction of your cloud assets as an Excel or JSON file.



Autogenerated Architecture Diagrams

Effortlessly produce editable architecture diagrams by selecting the level of details you wish to see in your diagrams.



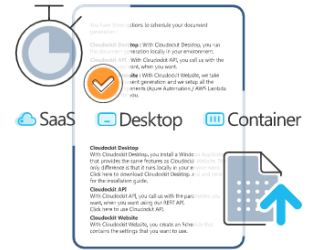
Autogenerated Technical Documentation

Create a complete Word, PDF, Excel or HTML document and continuously receive up-to-date and accurate information.



Scheduling, API & Change Tracking

Effortlessly monitor changes in your environment while saving time and energy.





Connect

Stantec.io

Quickly build model automation, machine learning services, and visualizations—regardless of discipline

CONNECT

The screenshot displays the Agility software interface, which is used for model automation and visualization. The interface is divided into several sections:

- Projects and Models:** A sidebar on the left shows a list of projects, including "Hello World", which is currently selected.
- Configure & Run:** A central panel for configuring the model. It shows the model type as "HEC-RAS" and the model description as "Hello World". The "Output Grids" section is expanded, showing a list of compute options: "compute - 4 cores", "compute - 8 cores", "compute - 16 cores", "compute - 32 cores", "compute - 64 cores", and "compute - 72 cores".
- Flood Insights:** A panel on the right provides summary information, including "Selected Area 392 mi²", "Flood Extent" (with a toggle switch), and "Flood Depth" (with a toggle switch).
- Map Visualization:** A large map on the right shows a topographic view of a river system. A blue outline highlights a specific area of interest, labeled "FRENCH BOTTOM".
- Code Editor:** A panel in the foreground displays a code editor with the following code:

```
display_ml_result('060400050403_prob', 'plasma_r', opacity = 0.4)
```
- Map Details:** The map includes a scale bar (50 m / 300 ft), a legend, and a "Layers" panel at the bottom.



Connect

Stantec.io

Connect with IoT and Edge devices with ease

CONNECT

River Gauges

Gauge	name	country	state	hasinpects	status
BDXT1	bordaux	us	tn	True	no_flooding
BCRT1	bordaux	us	tn	True	no_flooding
BPVT1	cockhill bend	us	tn	True	no_flooding
NAST1	nashville	us	tn	True	no_flooding
NBCT1	state fairgrounds in nashville	us	tn	True	no_flooding
NRCT1	charlotte avenue in nashville	us	tn	True	no_flooding
OMOT1	omohundro	us	tn	True	no_flooding
PNBT1	pennington bend	us	tn	True	no_flooding
WBCT1	glendale lane	us	tn	False	no_flooding
WBNT1	woodbine	us	tn	True	no_flooding

Items per page: 10 | 1 - 10 of 10

Alarms

Realtime - last day

Created time	Originator	Type	Severity	Status
No alarms found				

Items per page: 10 | 0 of 0

Map

Fleet tracking

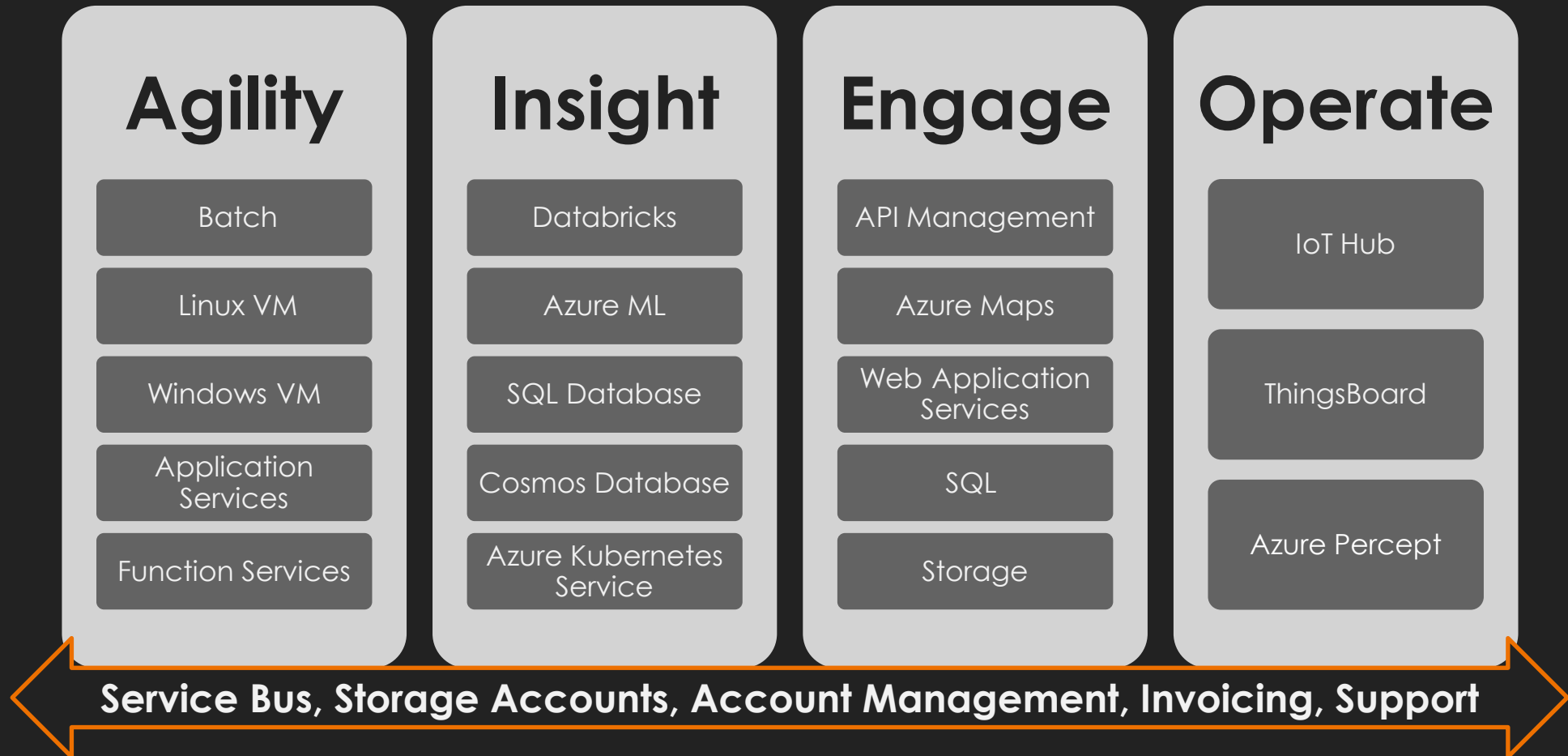
Bus name	Status	Speed	Fuel level
Bus A	On route	54.3 MPH	24 %
Bus B	On route	36.8 MPH	31 %
Bus C	Broken	0 MPH	55 %
Bus D	Refueling	0 MPH	100 %

Fleet tracking - Realtime - last day



Connect Core Technologies

40+ preconfigured services - Built to follow the "Asset" Lifecycle





Connect Platform Additional Capabilities

Supporting Technology & Processes

- **DevSecOps Automation Library: Terraform Private Module Registry** delivers subscription-based library with options for Foundation and Advanced modules.
- **Code Quality: SonarQube Code Analysis** empowers developers to write cleaner and safer code.
- **Support: Jira Support Desk** delivers great service experiences and ensures your employees and customers can get help quickly
- **Development Support: Stantec's Professional Services** Core team of specialists assist adoption of existing libraries and develop new capability to meet client requirements for existing Stantec products.



Connect

Stantec.io

[Request a Demo](#)

Want to learn more?

Connect Homepage

<https://connect.stantec.com/>

Stantec Public Connect Site

<https://www.stantec.com/en/services/connect>

Stantec.io Site

<https://www.stantec.io>

Overview

[Stantec.io Podcast, The Connect Episode](#)

Or contact:

Jeff Albee at jeff.albee@stantec.com