

TRANSFORMING WEATHER DATA

FOR TRANSPORTATION + SMART CITIES

fathym[®]

FATHYM COMPANY OVERVIEW

Fathym's Low-Code Framework empowers developers of all skill levels to rapidly and collaboratively build data applications that optimize businesses and fuel the Internet of Things.

Fathym accelerates enterprise digital transformation through a visual toolset to enable cloud provisioning, data flow and modular app development.

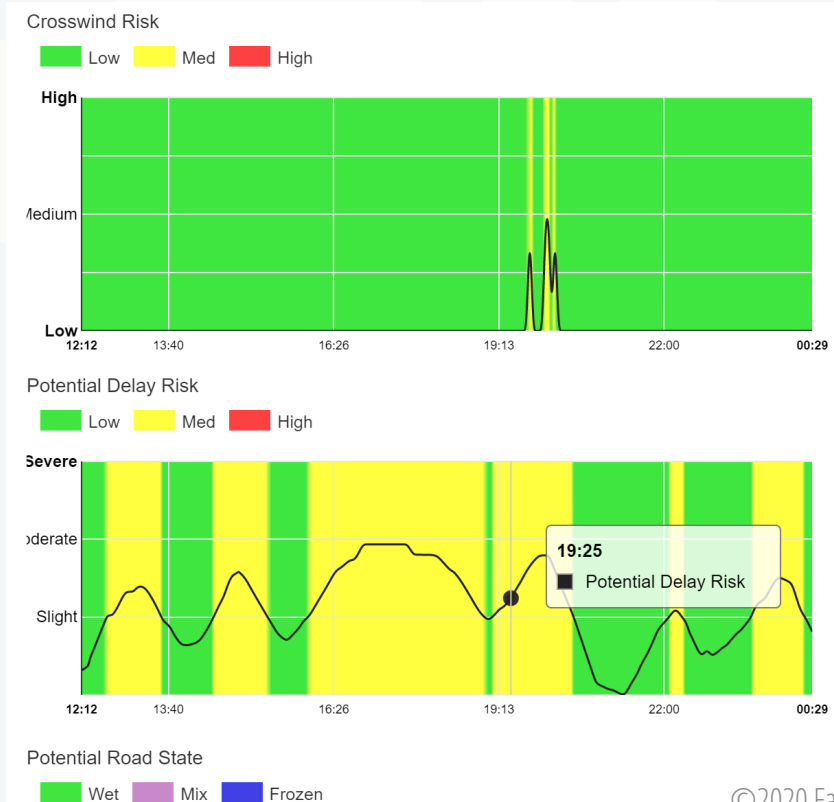
- Created: 2014
- Locations: Boulder | Berlin

The logo for Fathym, featuring the word "fathym" in a lowercase, teal-colored, sans-serif font. A registered trademark symbol (®) is located to the upper right of the final letter 'm'. The logo is enclosed within a thin teal rectangular border.

Surface Weather Forecast

The Fathym Forecaster combines the world's best weather forecasts with statistics-based, machine-learning techniques to tackle the largest datasets, including road weather.

FATHYM FORECAST OVERVIEW



- Global Forecast Service blends sensor data from additional third-party sensor sources, such as RWIS and METARs, with atmospheric models
 - A suite of software products and platform allows for the rapid creation of data dashboards (real-time monitoring, asset tracking, hind casts), data management and alerts
 - Point and Route forecasts available via dashboards, API or our robust partner network

FATHYM FORECASTS + ROUTES

Points Nowcast/Forecast - Global location-specific weather and road-weather forecast data

Points Plus Nowcast/Forecast - Points data tuned with observational data

Routes - Road weather-specific routing using Points and Points Plus forecast data

Tiles - Atmospheric and road weather visualizations; both gridded and road network

Points Historic - Historical lookback of observations, forecasts and visualizations

Data Integration - Flexible, scalable, balanced analytics back-end capable of integrating additional datasets

Web Services - Easily accessible APIs for JSON, CSV or XML data



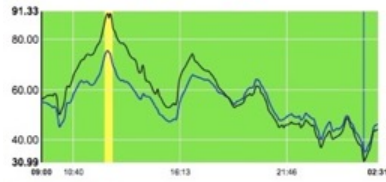
Origin: Los Angeles, CA, United
 Destination: Denver, CO, United State
 Departure Time: Sat 9AM
 Include Alternatives:
 Route

Road Temp: 46.71 F 1-40 E and I-25 N 17 hours 38 mins
 Temp: 47.91 F
 Elev: 4584 ft Delay Risk: 0.231537407446003877
 Wind Speed: 4 mph
 Precip: 0.00 in/hr

Forecast Details

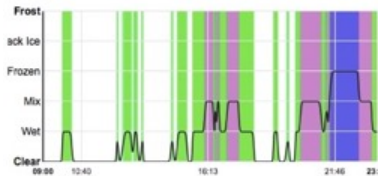
Temperature (F)

Freezing OK Warn Alert

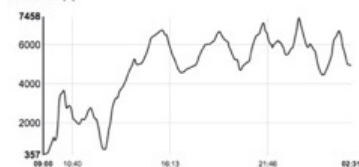


Potential Road State

Wet Mix Frozen

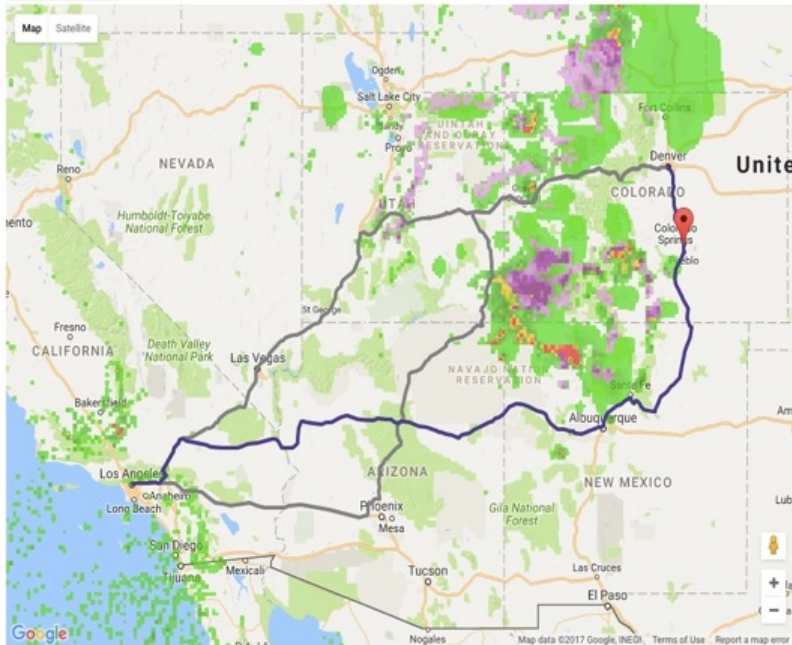


Elevation (ft)

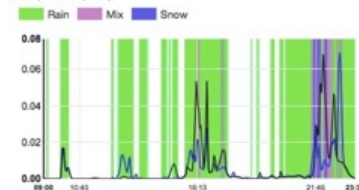


Dynamic Machine Learning Used to Derive Advanced Data Applications - Delay Risk Index

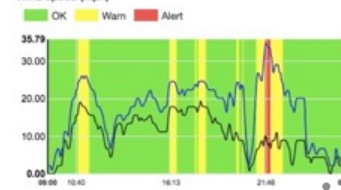
Fcst - precip Image shows forecast valid at point



Precipitation (in/hr)



Wind speed (mph)



TRANSFORMING WEATHER DATA

WEATHER-RELATED IMPACTS TO OPERATOR

fathym[®]

WEATHER IMPACTS ON TRUCKING INDUSTRY

4.6% of trucking hours are affected

\$9B lost annually due to delays

\$30M is lost per \$2B in revenue due to delays

18-23% of large truck accidents occur during poor weather conditions

- Heavy rain
- Snow
- Poor visibility
- High winds

Average Cost/Accident

- Property damage: \$148.2K
- At least one injury: \$335K
- At least one fatality: \$7.2M

Fuel Burn

- Unnecessary idle time savings:
 - 1 hour/week/year saves ~\$1M fleetwide



WEATHER-RELATED ACCIDENT STATISTICS – MEDIUM/HEAVY TRUCKS

- FMCA study found that 13.3% of Large truck-involved accidents were in adverse weather conditions (e.g. heavy rain, snow, low-visibility)
- Same studies found that 17.9% of Large truck-involved accidents were in poor road conditions (wet roads, icy roads)

Average Yearly US-wide Number of Medium/Heavy Truck Accident by Severity

Severity	Numbers of Accidents (Approximate)	Cost to Industry
Property Damage Only	59,000	\$8.5B
At Least One Injury (No Fatality)	15,000	\$5.0B
At Least One Fatality	650	\$4.5B
Total	74,650	\$18B

WEATHER-RELATED ACCIDENT STATISTICS – CASE STUDY – WERNER TRUCKING COMPANY



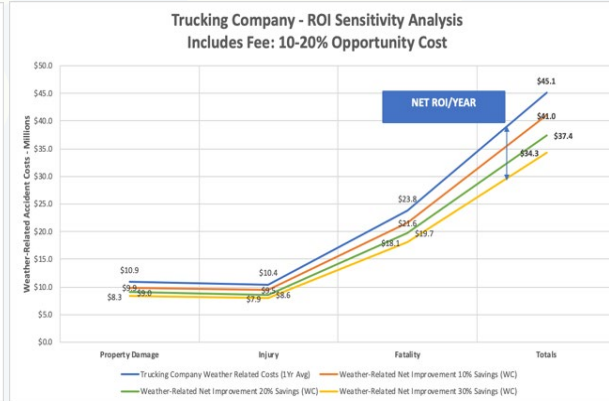
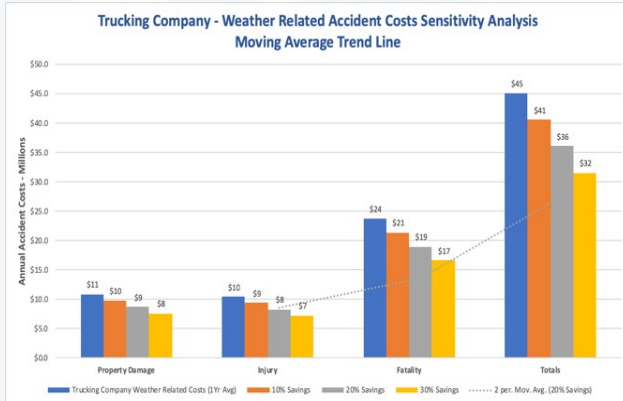
2 Year Study of Truck Accidents by Severity

Severity	Numbers	Estimated Cost
Property Damage Only	668	\$101M
At Least One Injury (No Fatality)	286	\$94M
At Least One Fatality	30	\$210M
Total	994	\$405M

WEATHER-RELATED ACCIDENT STATISTICS – CASE STUDY – WERNER TRUCKING COMPANY

Estimated Weather-Induced Accidents by Severity

Accident ROI Case Study	Accident Severity	Cost/Accident	Trucking Company	Trucking Company	Weather Related	Trucking Company
			Reported Accidents	Total Accident Costs	Costs (22%)	Weather Related Costs (1Yr Avg)
			(2 Yr Period)	(2 Yr Period)	(2 Yr Period)	(2 Yr Period)
	Property Damage	\$ 148,279	668	\$ 99,050,372	\$ 21,791,082	\$ 10,895,541
	Injury	\$ 331,108	286	\$ 94,696,888	\$ 20,833,315	\$ 10,416,658
	Fatality	\$ 7,200,310	30	\$ 216,009,300	\$ 47,522,046	\$ 23,761,023
	Totals		984	\$ 409,756,560	\$ 90,146,443	\$ 45,073,222



Cost Savings / % Improvement in Road Weather Conditions

10%	\$	(4,507,322)
15%	\$	(6,760,983)
20%	\$	(9,014,644)
25%	\$	(11,268,305)
30%	\$	(13,521,966)

* Incremental Decrease from Base Cost

ROI Calculation	10% Savings/Yr	20% Savings/Yr	30% Savings/Yr
Net Dollars Saved	\$ 4,056,590	\$ 7,662,448	\$ 10,817,573
ROI %	900%	567%	400%

WEATHER-RELATED ACCIDENT ETA ANALYSIS – CASE STUDY – WERNER TRUCKING COMPANY

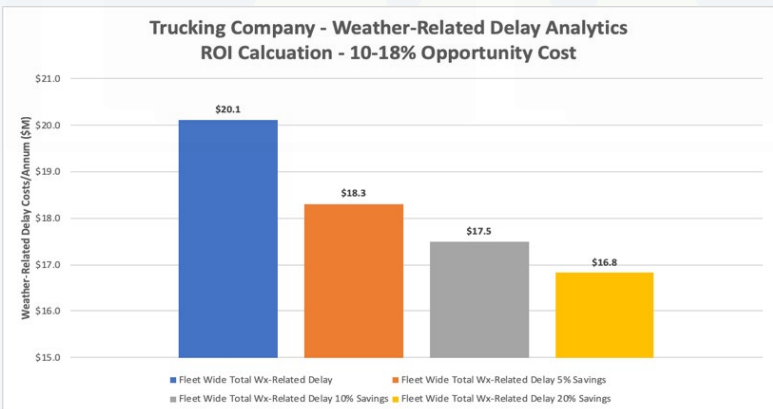
Trucking Company – Weather-Related Delay/Shift

ETA ROI Case Study	Average Shift Time (Hours)	Average Shift Time (Min)	Weather-Related Delay/Shift (Min)	Dollars/Shift (Estimate)	Dollars/Minute (Estimate)	Weather-Related Delay Cost/Shift	Trucking Fleet Quantity	Fleet-Wide Weather-Related Delay/Day	Fleet-Wide Weather-Related Delay/Annum
	7	420	21	\$ 800	\$ 0.53	\$ 11.03	5,000	\$ 55,125	\$ 20,120,625

Sensitivity Analysis	Wx-Related Savings/Shift	Wx-Related Savings/Shift (Min)	Dollars/Shift (Estimate)	Dollars/Minute (Estimate)	Wx-Related Cost Reduction/Shift	Trucking Fleet Quantity	Total Wx-Related Delays Savings/Day	Total Wx-Related Delay Savings/Annum
10%	18.90	\$ 800	\$ 0.53	\$ 9.92	5,000	\$ 49,613	\$ 18,108,562.50	
15%	17.85			\$ 9.37	5,000	\$ 46,856	\$ 17,102,531.25	
20%	16.80			\$ 8.82	5,000	\$ 44,100	\$ 16,096,500.00	

Cost Savings / % Reduction in Weather-Related Delay		
10%	\$	(2,012,063)
15%	\$	(3,018,094)
20%	\$	(4,024,125)

Net Savings (\$)	Opportunity Cost	Notional Fee (\$M)	ETA Savings / Year		
	Cost		ROI \$M	ROI %	
10% Net Savings	10%	\$ 0.20	\$ 1.81	1.81	900%
15% Net Savings	13%	\$ 0.39	\$ 2.63	2.63	669%
20% Net Savings	18%	\$ 0.72	\$ 3.30	3.30	456%



CONTACT US

Fathym.com

Sales@Fathym.com

