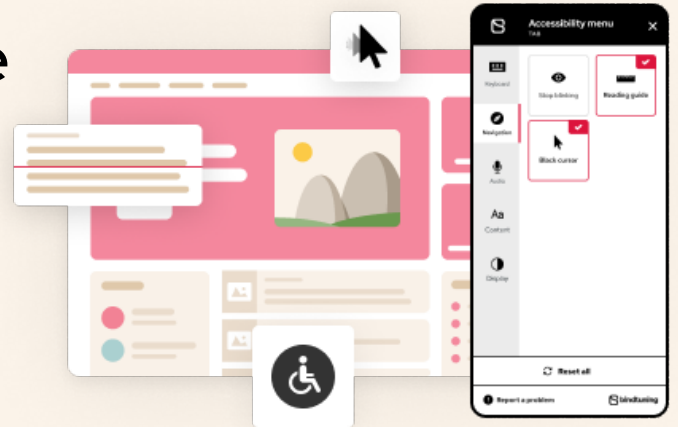


Inclusion in the workplace starts with your intranet.

Foster an inclusive digital workplace for people of all abilities, with the first accessibility tool for SharePoint.



For people of all abilities

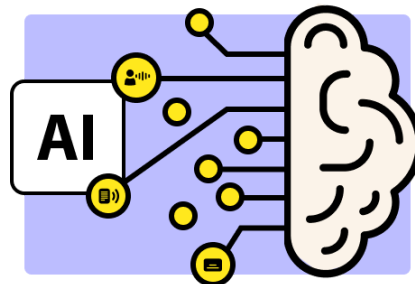
Roughly 20% of the population has some kind of disability, of which over 70% are "invisible" - meaning people in your workforce might be struggling without you knowing. Using our Accessibility Tool for SharePoint will transform your intranet into a safe place where people of all abilities can perform their best.

- ✓ WCAG 2.1 guidelines
- ✓ Multiple disabilities
- ✓ Installs as web part
- ✓ Subscription-based



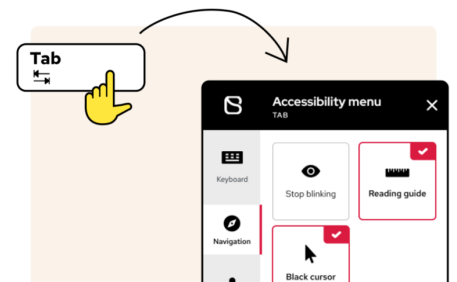
For multiple disabilities

The Accessibility Tool supports people with multiple visible and invisible disabilities, from visual, hearing, color blindness, epilepsy, dyslexia, anxiety, PTSD, motor, just to name a few.



AI Powered

Built on Azure Cognitive Services, the Accessibility Tool takes advantage of the cloud-based AI capabilities within Azure, offering cognitive understanding for vision and speech.



Press "tab" to start

An inclusive intranet is within easy reach. For users it couldn't be easier - they simply need to click on the icon or press "tab" on their keyboard to open the panel, adjusting settings to their needs.

More on
Accessibility



Request a
Demo or meeting

