



ExSign

Email Signatures Solution

Datasheet

Email Signature Software for Microsoft 365 and Exchange Server



Microsoft 365



Exchange

Apply rule-based signatures and disclaimers to your outgoing email
www.hostingcontroller.com

A Smart Signature Solution

Need for a Signature Solution

Imagine a large corporation with thousands of employees. Updating email signatures manually for each employee sounds like nothing less than a nightmare. Expecting IT to go desk to desk setting up new signatures for employees is too much to expect of it. Requesting IT to make rounds pasting a new email signature template into Outlook manually just doesn't add up. It not only results in tons of hours of wasted employee time but also heightens the level of frustration in IT itself.

Additionally, not all employees are the same. Some may manage to add professional signatures and disclaimers to their outgoing emails, others might encounter challenges in doing so. The likelihood of errors creeping into their corporate signatures is large. From spelling mistakes to broken links to distorted images to inconsistent fonts and colors, anything is to be expected. Inconsistencies are hard to curb.

Then there are many email clients out there. Senders may have different devices, different clients, or even different smartphones. Client-side signatures may create problems as different clients may have different restrictions. Finally, the limitations of the native Exchange tools are to be contended with. If you are an Exchange administrator, you can very well imagine the limitations inherent in the inbuilt Exchange mail flow rules.

All the above make a compelling case for an automated email signature software solution.

Automated Email Signatures and Disclaimers

ExSign is a smart email signature management solution that allows Microsoft Exchange administrators to stamp all outgoing emails with professional signatures and disclaimers. It lets Exchange administrators automate the stamping process.

With ExSign they can centrally add signatures and disclaimers to a web portal and based on pre-defined rules let ExSign decide which signatures and disclaimers to stamp on all outgoing emails.

Why ExSign?

Company emails are your brand ambassadors. They carry the power of conveying a consistent brand message to customers. However, if email signatures are riddled with inconsistencies, they may fail to make an impression. Manual signature stamping always gives rise to irregularities and these inconsistencies are hard to curb. ExSign comes to the rescue with 100% automated, rule-based Exchange and Microsoft 365 email signatures and disclaimers. It allows multiple user levels to access a central location and define rules and signatures for all outgoing emails. With the added features of banner management and sent item updates it furnishes a multi-tenant and multi-server Exchange signature management solution.

ExSign Gives You an Edge by

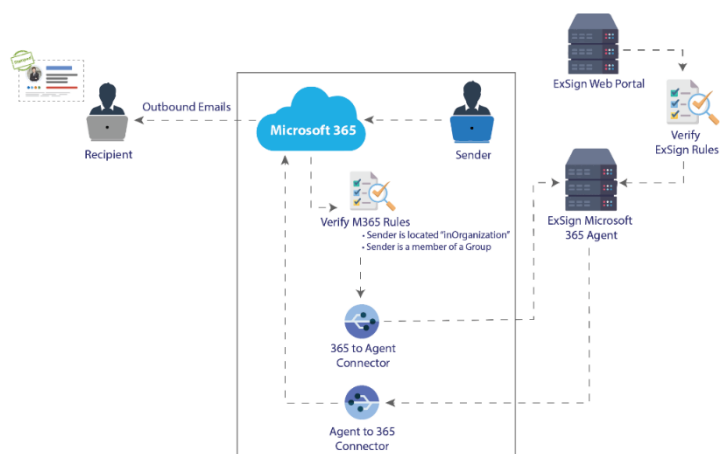
- ✓ Providing a user-friendly GUI.
- ✓ Providing a fully automated email signature software for Microsoft 365.
- ✓ Maintaining brand consistency across all your company's emails.
- ✓ Presenting extensive reporting into signature data.
- ✓ Handling large amounts of stamping.
- ✓ Transforming emails into an engaging marketing channel.

Signatures for Microsoft 365

Like Exchange on-premises, Microsoft 365 mail flow rules also exhibit many limitations that limit the use of native technologies for offering organization-wide signatures. For instance, the built-in capabilities in Microsoft 365 do not allow users to insert signatures directly under the latest email reply or forward. They also do not allow images to be embedded in email signatures. Without the use of capable email signature software, it is almost impossible to gain these functionalities out of the box. ExSign for Microsoft 365 provides administrators with the means to create a unified company-wide email signature that surpasses all limitations and conveys a consistent brand message.

With ExSign for Microsoft 365, you can create captivating signatures and disclaimers from a central location, while still having full control of the stamping agent. You may keep the agent in-house, on any Windows machine, on your own premises, or place it on a virtual machine in any cloud service like AWS or Azure. The choice is yours. ExSign for Microsoft 365 further allows administrators to stamp signatures on members of a specific group within the Microsoft 365 tenant/organization.

The Microsoft 365 agent links to the ExSign web portal for centralized rules and templates, while also connecting to the Microsoft 365 tenant/organization. In doing so it intrinsically allows multiple user levels to gain fine-grained access to the central portal and define and publish rules, signatures, and banners for the Microsoft 365 mailboxes.



- ❖ **Installation:** Install the agent on any Windows machine.
- ❖ **Security:** No data transfer to an external cloud-based rules engine.
- ❖ **Centralized Management:** Manage all email signatures from a single, central location.
- ❖ **Access Control:** Offer fine-grained access control through multiple user levels.
- ❖ **Brand Consistency:** Ensure all emails follow the same branding guidelines.
- ❖ **Legal Disclaimers:** Ensure compliance with legal disclaimers.
- ❖ **Banner Management:** Maximize engagement with time-barred banners.
- ❖ **Social Icons:** Enhance reach with social media icons.
- ❖ **HTML Editor:** Format signatures with an inbuilt editor.
- ❖ **Template Library:** Access to a library of pre-designed signature templates.
- ❖ **Group-Specific Signatures:** Allow stamping on members of a specific group.
- ❖ **Reporting:** Provide detailed reports on signature usage and effectiveness.
- ❖ **Bilingual Interface:** Present a bilingual interface with two international languages.

Overcome the limitations inherent in native tools with ExSign for Microsoft 365

Microsoft 365	ExSign
⊗ Images cannot be embedded in email signatures.	✓ Embed images directly in email signatures.
⊗ Signatures cannot be inserted directly under the latest email reply or forward.	✓ Insert signatures directly under the latest email reply or forward.
⊗ No formatting is included by default.	✓ Create professionally formatted signatures and disclaimers with an inbuilt HTML editor.
⊗ Lines that contain variables that can't be updated cannot be skipped.	✓ Skip lines that contain variables that can't be updated, with ease.
⊗ Signatures are not consistent across all devices.	✓ Furnish consistent signatures across all clients and devices.

Case Study

See how a Turkish system integrator leveraged ExSign for managing its email signatures.

<https://hostingcontroller.com/Resources/Casestudies/System-Integrator-Case-Study.pdf>

System Requirements

ExSign Web Portal

ExSign Web Portal is a web-based utility that can be accessed on the Internet. ExSign Web Portal should be installed on a separate Windows Server. The Windows Server can be part of a domain or can be a standalone server. There can be more than one portal server for high availability. These portal servers will be public facing. The server should have:

- ❖ Any edition of Windows Server 2016 or above.
- ❖ IIS7 or above.
- ❖ ASP.NET Core 7.0.4 Hosting Bundle (<https://dotnet.microsoft.com/en-us/download/dotnet/thank-you/runtime-aspnetcore-7.0.4-windows-hosting-bundle-installer>).
- ❖ .NET 4.8 Framework.
- ❖ .NET 7.0 Runtime (by default included in .NET 7.0 Hosting Bundle).

ExSign Transport Agent

ExSign Agent is developed to work as a desktop utility and should be installed on all Exchange Mailbox servers in the Entity. The Mailbox server should have:

- ❖ .NET 4.8 Framework.
- ❖ .NET 7.0 Desktop Runtime (<https://dotnet.microsoft.com/en-us/download/dotnet/thank-you/runtime-desktop-7.0.4-windows-x64-installer>).
- ❖ .NET 7.0 Runtime (<https://dotnet.microsoft.com/en-us/download/dotnet/thank-you/runtime-7.0.4-windows-x64-installer>).

Features

- ✓ **Web Based Tool**

Users can access the central portal anytime through a web browser.
- ✓ **Central Management**

Users can view all the rules and signatures across multiple Exchange environments in one place and administer them accordingly.
- ✓ **Multi-Level Access**

Multiple user roles based on Active Directory security groups can access their interfaces to define their own rules and signatures.
- ✓ **Highly Available**

A highly available solution with stamping from all mailbox servers. If a mailbox server goes down, the stamping process ensues unabated from the other mailbox servers.
- ✓ **Sent Items Update**

Mailbox users can see signatures and disclaimers in their sent items folder, even after emails have been sent out.
- ✓ **Secure Communication**

Employs a double layer of encryption. The first layer employs internal encryption while the second layer makes use of SSL/TLS.
- ✓ **Bilingual Interface**

The central interface is available in two international languages English and Arabic.
- ✓ **Ready to Use Templates**

Furnishes easy-to-use pre-defined signature templates. With templates, there is no need to build signatures from scratch. Ready-made templates can simply be edited to save time and effort.
- ✓ **Time Based Rules**

Time intervals can be defined as conditions for rules. Time intervals can be specified in days, active hours, or date ranges.
- ✓ **Banner Management**

Not only banners can be displayed with email signatures, but they can also be run for a set period and then automatically removed or updated when required.
- ✓ **Multi-tenant and Multi-server**

Supports organizations of all sizes including organizations with multiple mailbox servers configured in DAG.

Sent Items Update Agent

Sent Items Update Agent is developed to work as a desktop utility and should be deployed either on the portal server or a standalone server. The server should have:

- ❖ .NET 4.8 Framework
- ❖ .NET 7.0 Desktop Runtime (<https://dotnet.microsoft.com/en-us/download/dotnet/thank-you/runtime-desktop-7.0.4-windows-x64-installer>).
- ❖ .NET 7.0 Runtime (<https://dotnet.microsoft.com/en-us/download/dotnet/thank-you/runtime-7.0.4-windows-x64-installer>)

ExSign Database

ExSign stores its database in Microsoft SQL Server. It's recommended to have a separate SQL Server cluster to host ExSign's database.

Software Requirements

- ❖ Any edition of SQL Server 2014 or above.
- ❖ SQL Server Collation must be SQL_Latin1_General_CP1_CI_AS

Firewall Ports

- ❖ 443 (HTTPS) Web Portal Access Port
- ❖ 8776 (API Hub) Bi-direction firewall rule between Portal & Agent Servers.
- ❖ 636, 389/LDAPS: Bi-direction firewall rule between Portal and its authentication Active Directory.
- ❖ 636, 389/LDAPS: Bi-direction firewall rule between Agent Server & Exchange Active Directory.
- ❖ 3268, 3269 (Global Catalog) Bi-direction firewall rule between Portal and its authentication Active Directory.

✓ Segregated Solution

Ensures full segregation of user signatures based on exclusive Exchange environments, organizational units (OU) within Exchange sites, and UPN suffixes.

✓ Most Devices Supported

Supports most major devices and email clients including mobiles, tablets, Android, and iOS.

✓ Three Different Formats

Availability of a built-in editor to compose signatures and disclaimers in HTML, RTF, and plain text formats.

✓ Active Directory Profiles

User profiles are pulled directly from the Active Directory. Information pulled directly from Active Directory guarantees accurate contact details on all outgoing emails.

✓ Rules Fetched Locally

Instead of fetching the rules from a remote database, it fetches them from the local database present on the mailbox servers, circumventing any unnecessary lag.

✓ Extensive Logging

Brings extensive logging for actions performed. Logs are available for all admin users including ExSign Admins, Exchange Admins, and OU Admins.

✓ Test Rules

Facility to test all rules before deploying them in production.

✓ Separate Rules

Distinct rules for signatures and disclaimers.

✓ Reporting and Analytics

Useful reports showing the number of signatures and disclaimers stamped across entities, servers, and organizations.

✓ Two-Factor Authentication

Portal users can provide two different authentication factors to verify themselves.



CONTACT US

For feedback and queries, contact us at:

Sales: sales@hostingcontroller.com
Support: support@hostingcontroller.com

Worldwide Contacts (Sales Queries)

Canada: +1 (647) 799-1000

USA: +1 (213) 341-8140

Australia: +61 (3) 6364 3907

UK: +44 (0) 207 0961387

Fax: +1 (604) 227 0273

Hosting Controller Inc. Kingston

1056 Gardiners Rd, Kingston, ON, K7P 1R7 Canada.

Founded in 1999 and a pioneer in Windows Hosting Automation, Hosting Controller is a hybrid multi-cloud control panel for enterprises, government organizations and service providers. Hosting Controller transforms your data center into a private cloud, letting your data stay where it is. Hosting Controller's robust and unified control panel offers cross platform support, N-tier user architecture and self-service portals. It has built-in integrations for Microsoft Enterprise Applications MS Exchange, SharePoint, Skype for Business, Active Directory and MS 365 and a full automation solution for IaaS offering virtualized partitions on both Windows and Linux based servers through Hyper-V and VMware. Hosting Controller Inc. is based in Ontario, Canada and has customers in 125 countries worldwide.

Copyright © 2024 Hosting Controller Inc. All Rights Reserved. ExSign is a trademark of Hosting Controller and/or one of its subsidiaries and may be registered in Canada and other countries. Other products and company names mentioned herein may be trademarks of their respective corporations.

www.hostingcontroller.com