

Webdashboard Security

How Power BI + Webdashboard enable safe sharing of your data?

Table of contents

Introduction.....	1
Webdashboard and Power BI	2
Where is the data stored?.....	3
Refresh your Data.....	4
Make reports available to users	5
1. Directly on Power BI Service	5
2. Via Webdashboard	5
User access flow.....	6

Introduction

This Whitepaper focuses on the question: How does Webdashboard handle your data? To do this, it is important to clarify how Webdashboard and Power BI work together. After that, we will look at the flow of your data and where it will be stored. Finally, we examine how your reports and dashboards are made accessible to the end user.

After reading this whitepaper, you should know whether Webdashboard adheres to your company's security guidelines.

Webdashboard and Power BI

In short, Power BI is used as a PAAS platform, with Webdashboard being the SAAS solution for the end users and consumers. The SAAS part of Power BI is made accessible to Business Intelligence specialists.

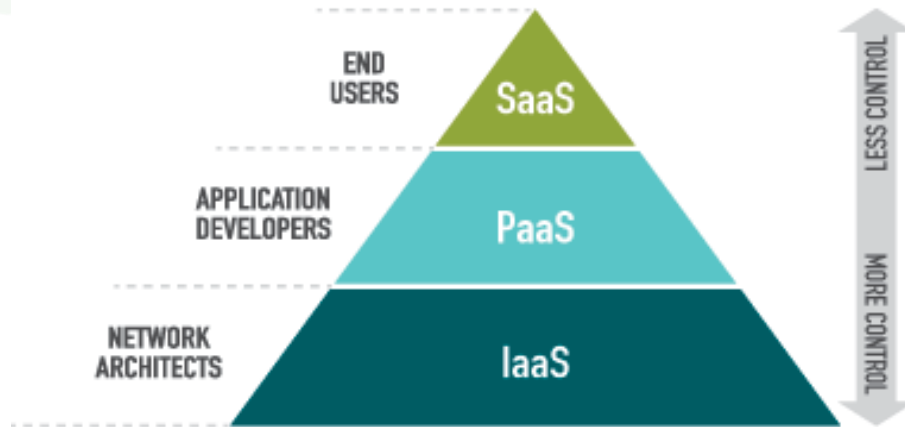


Figure 1 - Pyramid of Control for cloud offers

Webdashboard ensures that all security regarding/concerning/relating your data and their connections remain within the PAAS environment managed by Microsoft.

With a Webdashboard environment, a Workspace is created for you within Power BI. You will receive one account to access this Power BI Workspace. This account will be the only way to access this Power BI Workspace.

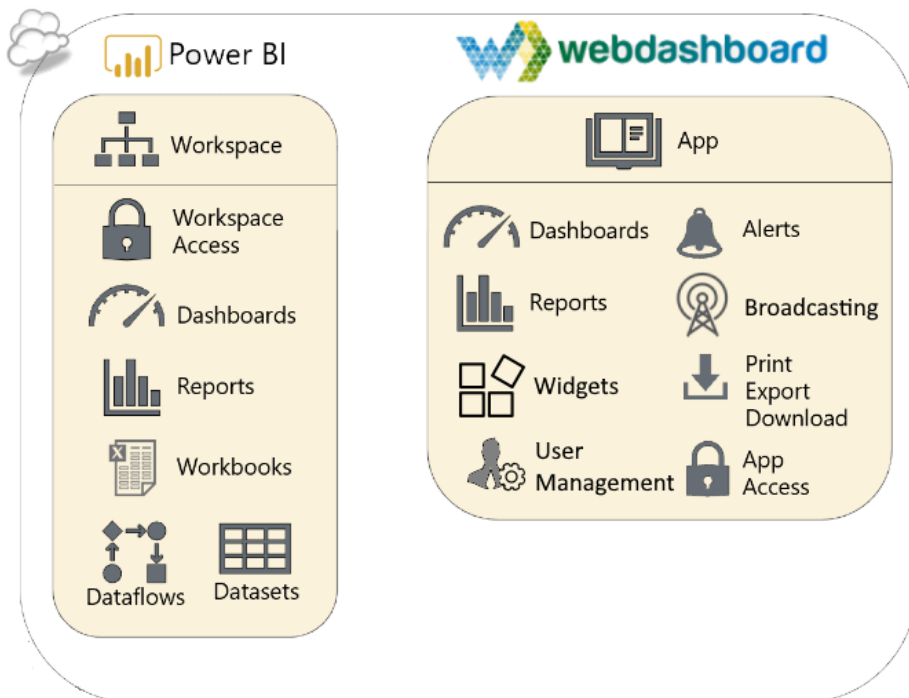


Figure 2 - Power BI and Webdashboard overview

Where is the data stored?

The data is inside the report that you upload to the Power BI Workspace. Your data is only stored in this Workspace if it is an import report (figure 3). Otherwise only the structure of the data is known within the workspace, which is called Direct Query (figure 4). With Direct Query when the report is viewed by an end user, the query is performed on your data after which it is displayed.

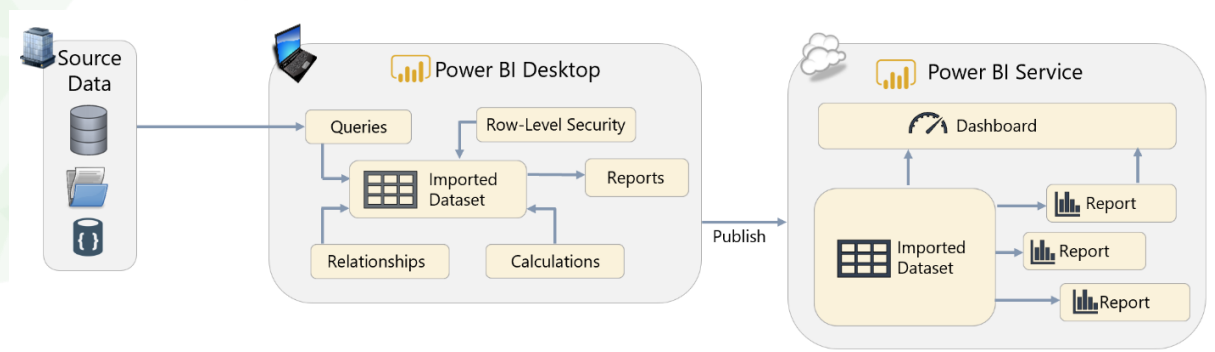


Figure 3 - Import: Your data is stored Power BI

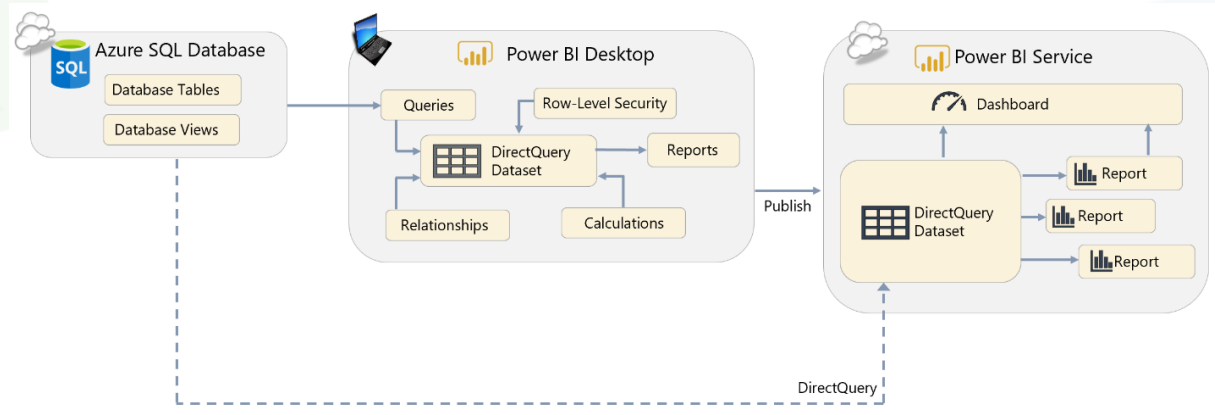


Figure 4 - Direct Query: Your data is not stored in Power BI

Refresh your Data

For both Direct Query and Imported Datasets it must be possible for Power BI Service to access your source data at all times. For Direct Query, because every click in the report queries your data. For imported datasets, because without access you cannot utilize/manage scheduled refreshes.

This access to the source data remains entirely in Power BI. It is what Microsoft has Data Gateways for. For many data sources, this gateway is already available in Power BI services. However, if you have on-premise data sources, you can configure and link them manually.

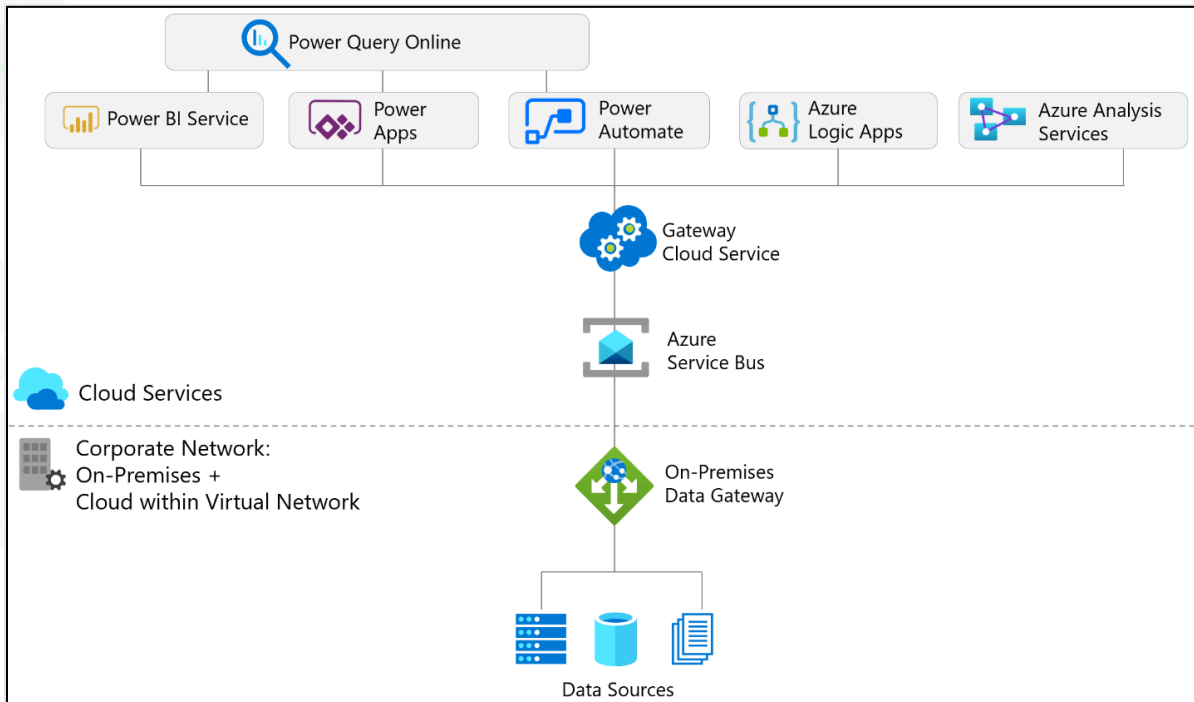


Figure 5 - Universal route from data source to Power BI service

Takeaways:

- Your reports and data are stored in a [Power BI Workspace](#).
- You are the only one with access to this [Power BI Workspace](#).
- The [Power BI Workspace](#) is managed by Microsoft. Detailed information on how to set up security for Power BI can be found here: [Power BI Security - Power BI | Microsoft Docs](#)
- The connection between your data source and the Power BI Workspace is also fully managed by Microsoft.

Make reports available to users

You can make a Power BI Workspace from a Webdashboard portal accessible in two ways:

1. Directly on Power BI service.
2. Via Webdashboard

1. Directly on Power BI Service

With a Webdashboard subscription you receive one **Power BI Publish account**. This will allow you to login to <https://www.powerbi.com>. You can purchase multiple Power BI Publish accounts. These accounts are intended for publishing and configuring reports and datasets. This account is only meant to be used by the administrator and should not be accessed by end users/consumers. Though this account, an administrator can publish their reports directly to a location in Webdashboard of their choice.

2. Via Webdashboard

User management is available in Webdashboard. You can invite users to view your reports via this menu. Here you can also link Azure Active Directory, Google Workspace and Azure B2C. The image below shows the various options to make your reports available in Webdashboard.

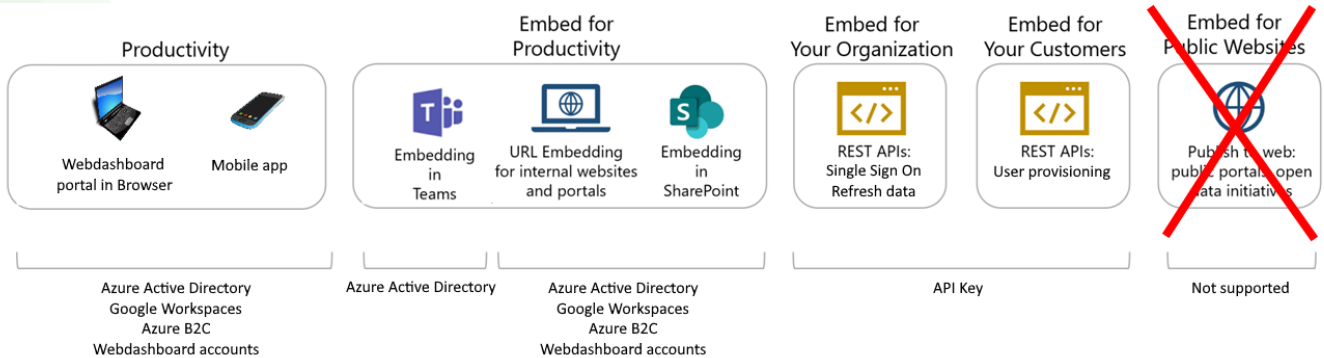


Figure 6 - Report accessibility options through Webdashboard

User access flow

To give users access via Azure Active Directory / Google Workspace / Azure B2C, the full login flow of that Identity provider is followed. For example, if Azure Active Directory is used and your company has configured MFA (Multi Factor Authentication) on it. Logging in at Webdashboard, will also have MFA. After logging in, Webdashboard checks the security token with the relevant identity provider. If this is valid, it is checked whether the user in question has a license within Webdashboard. If so, the user receives a Security token from Webdashboard and can use that token to see the reports that have been assigned to them.

Webdashboard checks based on the e-mail address of the user, which identity provider should be used to login. The login flow is as follows.

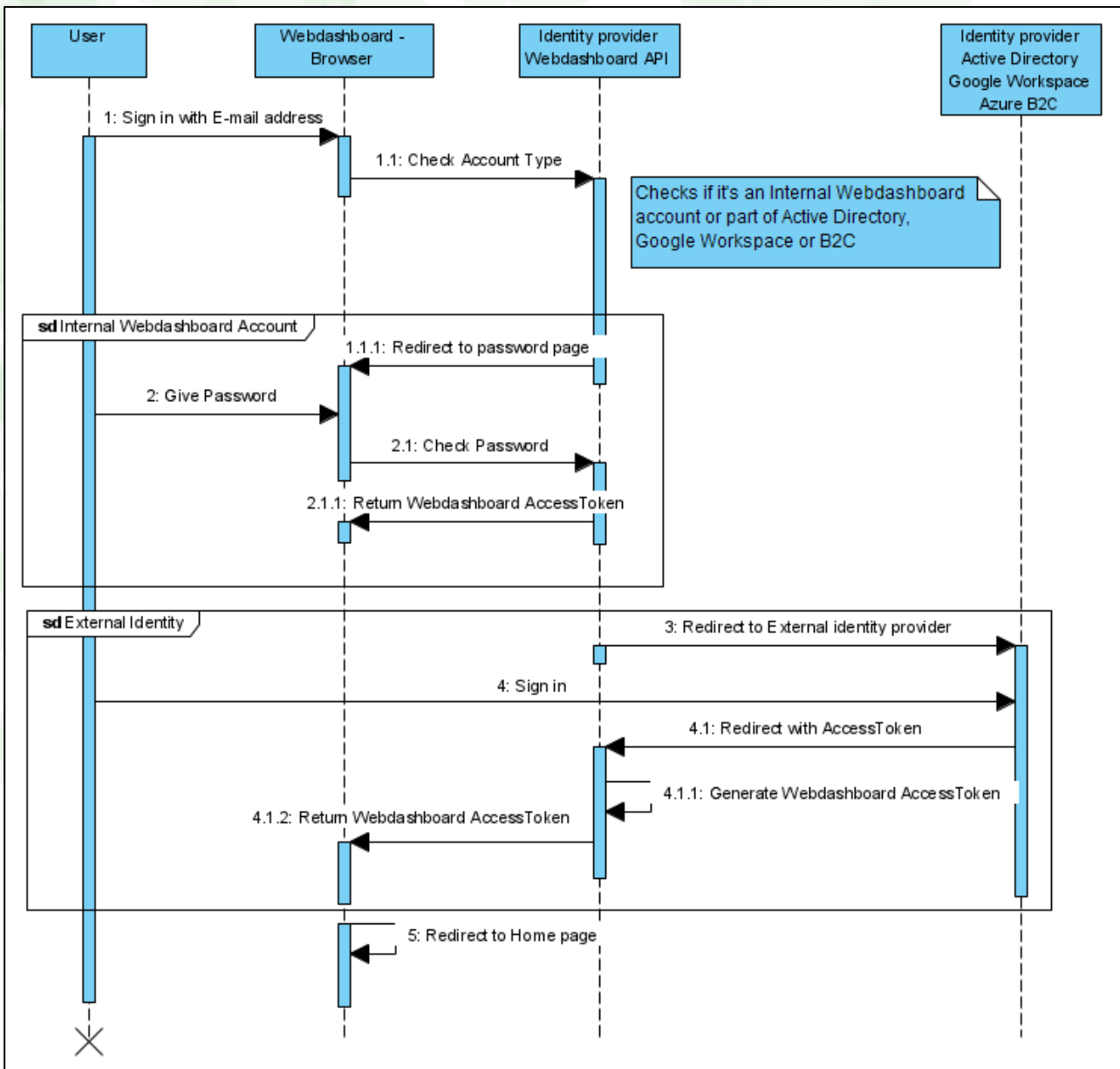


Figure 7 - Login flow for Webdashboard