

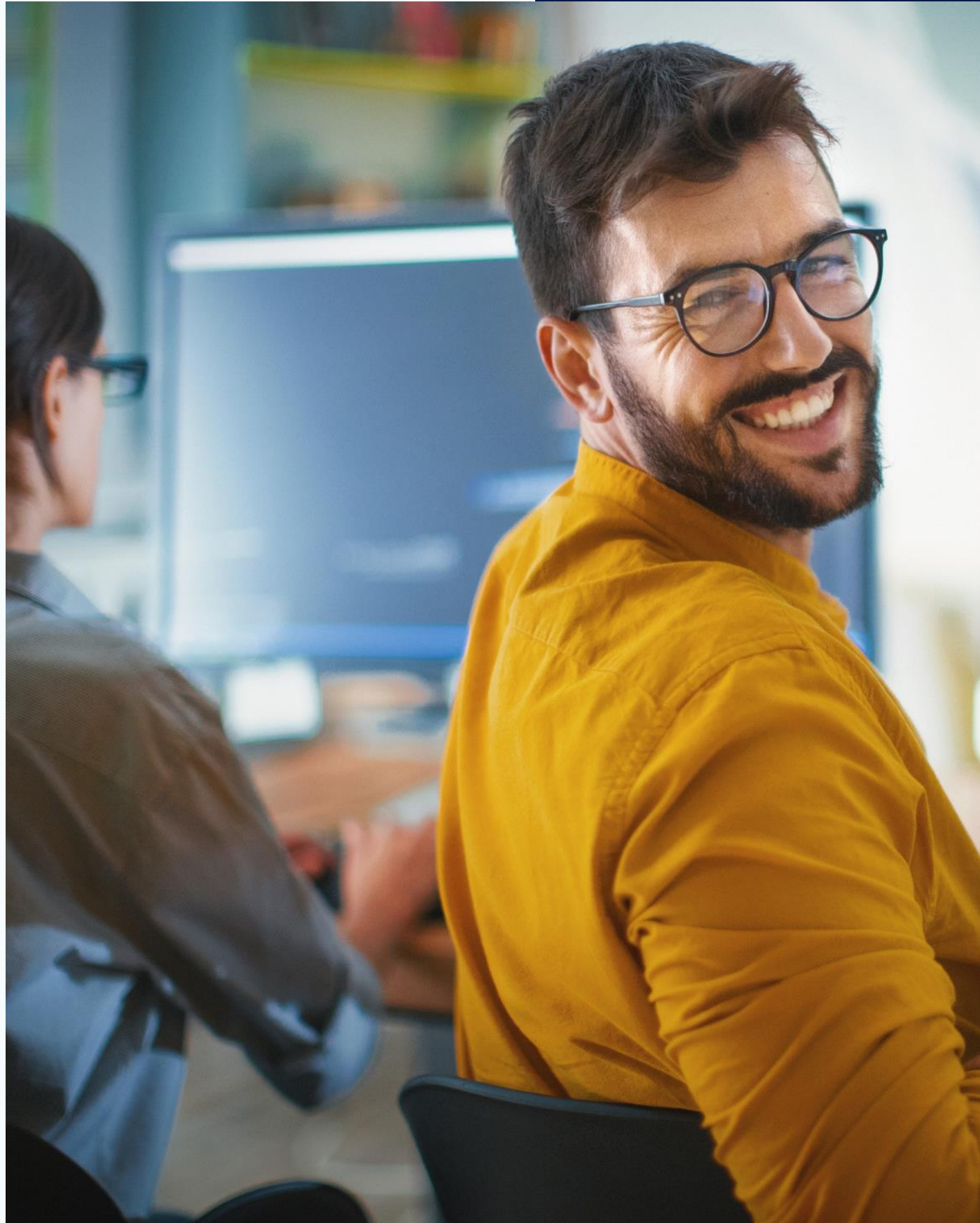


---

**Comprehensive IT Solutions  
for Modern Businesses**

**REMOTE IT SERVICES  
BY CLARION IT TEAM**

---







# INTRODUCTION



**OVERVIEW OF CLARION IT TEAM**



**IMPORTANCE OF REMOTE IT SERVICES**





# OVERVIEW OF CLARION IT TEAM

**IT Manager/IT Director:** Oversees the entire IT department, sets goals, manages budgets, and ensures that IT initiatives align with organizational objectives.

## System Administrators

Responsible for the day-to-day operation of the organization's IT infrastructure. This includes maintaining servers, networks, and ensuring system security.

## Network Administrators

Focus specifically on managing the organization's network infrastructure. They configure, manage, and monitor network devices such as routers, switches, and firewalls.

## IT Support/Helpdesk

Provides technical support to end-users, helping them resolve issues with hardware, software, and network connectivity. This may include desktop support, troubleshooting, and guiding using IT systems effectively.





# IMPORTANCE OF REMOTE IT SERVICES

---



**Accessibility**



**Cost-Effectiveness**



**Scalability**



**Efficiency**



**Expertise**



**Security**



**24/7 Support**



**Disaster Recovery and  
Business Continuity**





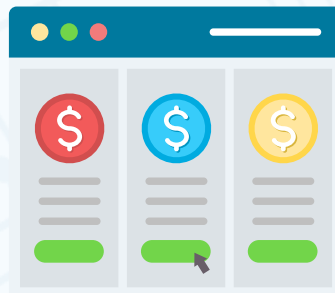
# CLOUD INFRASTRUCTURE



**AWS/Azure/GCP  
Cloud Services**



**Cloud Computing  
/Networking**



**Subscription  
Management**



**Monitoring  
Tools**



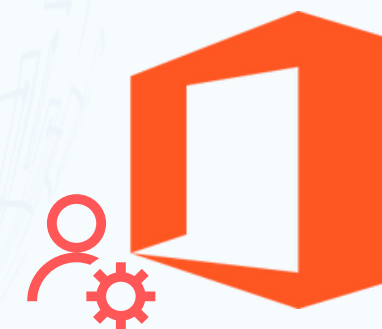
**VM Installation,  
Configuration,  
Troubleshooting**



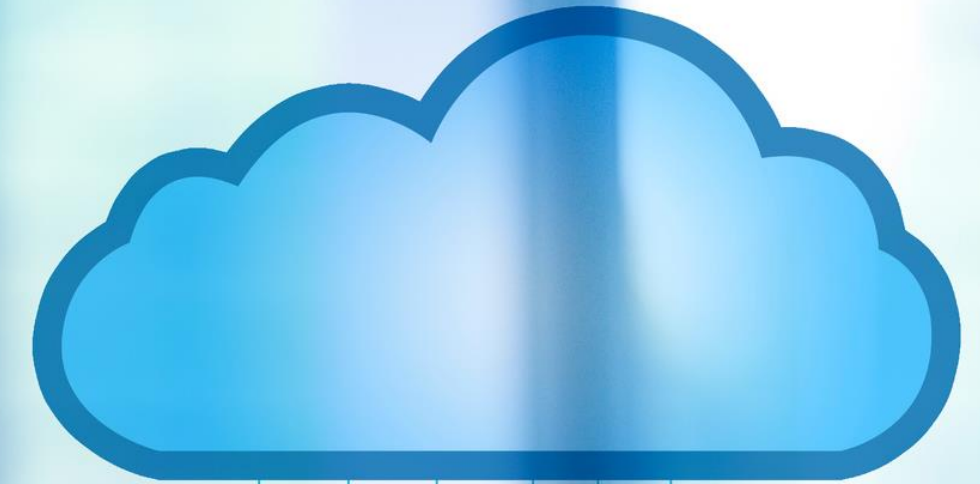
**User/Group  
Management &  
Security  
Permissions**



**Data Backup  
and Restore**



**Office 365  
administration**





# ON PREMISE INFRASTRUCTURE

---



**Windows Server  
Administration**



**Linux Server  
Administration**



**CICD  
Automation**



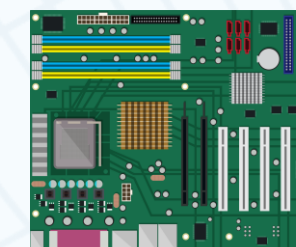
**Webhosting  
support**



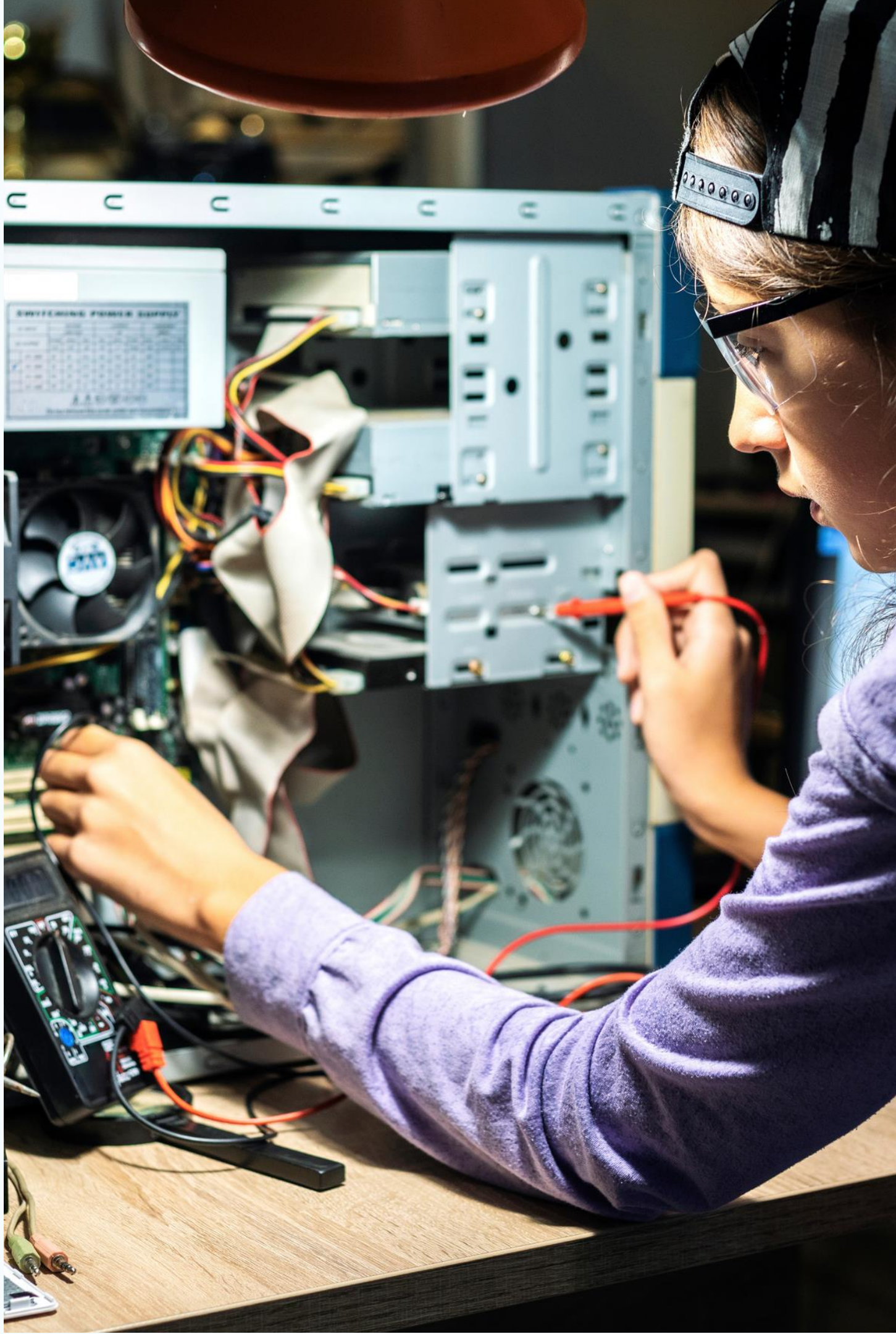
**Endpoint  
security**



**Data Backup  
and Disaster  
Recovery**



**Hardware/  
Software  
Management**



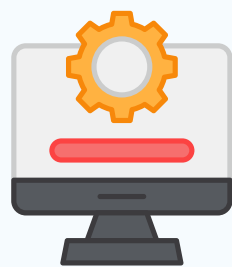


# VIRTUALIZATION ADMINISTRATION

---



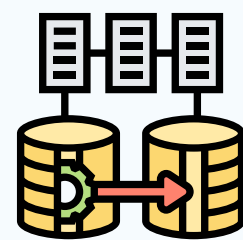
**KVM/Hyper-V/Proxmox  
Environments**



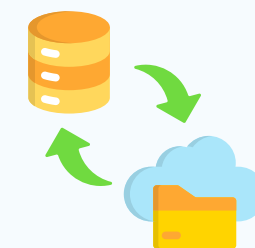
**Installation,  
Configuration,  
Troubleshooting**



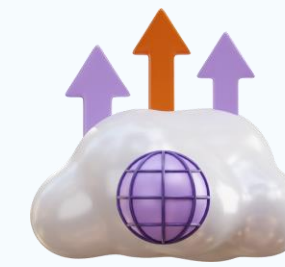
**Virtual Machine  
Management**



**NAT Configuration,  
Server Migrations**



**Backup/Restore/  
Snapshot Management**



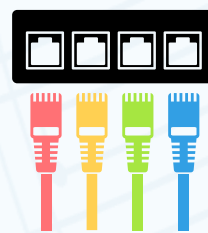
**Host Server  
Patch Upgrade**



**Daily Health  
Checks**



# NETWORKING ADMINISTRATION



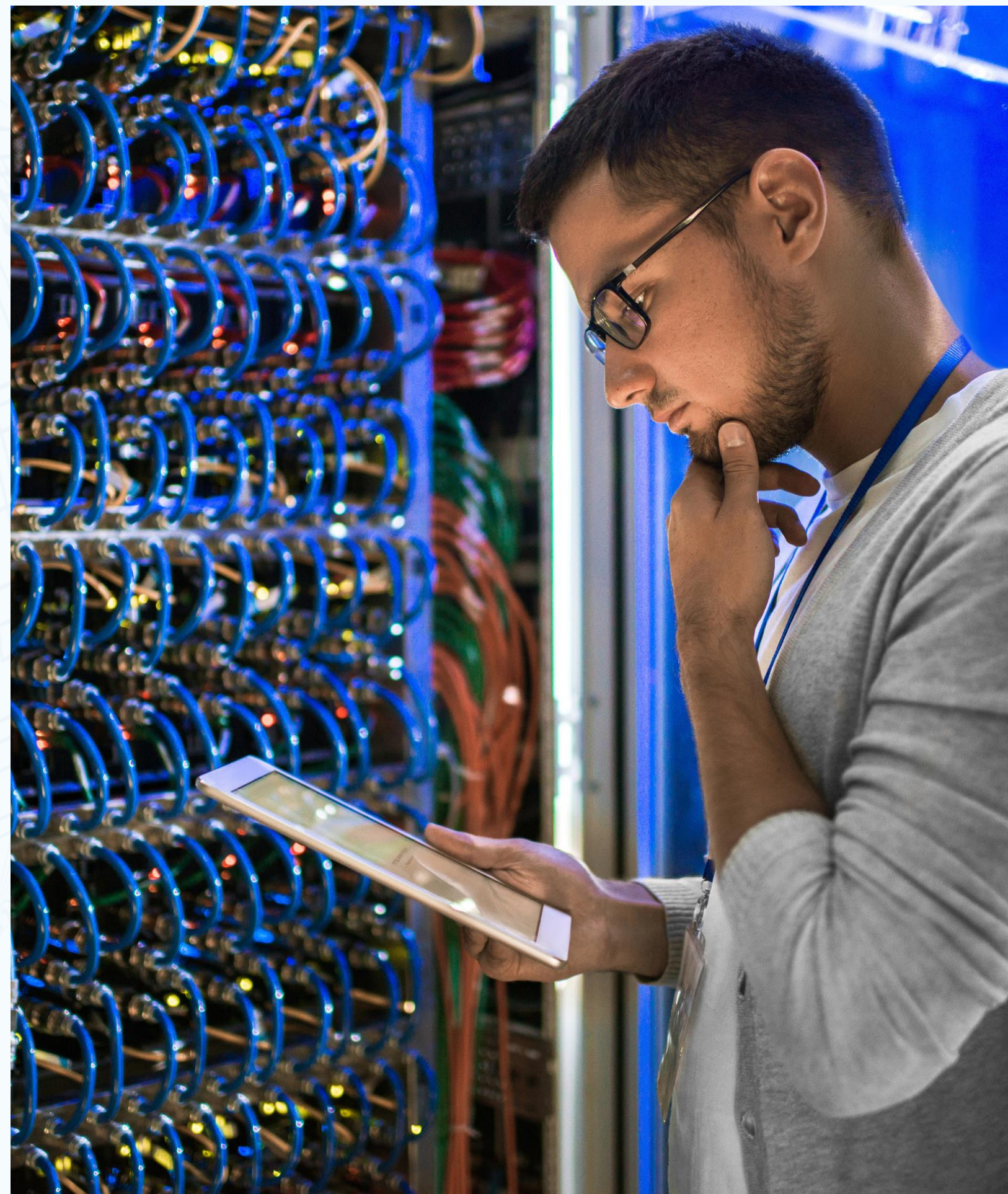
**LAN/WAN  
Environment  
Management**



**Firewall  
Management**  
SonicWall/Sophos



**Network  
Devices  
Management**





# MIGRATIONS

## Email Server Migrations

Office 365,  
Google

## Server Migrations

Virtual to Physical,  
Physical to Virtual,  
Cloud Migrations

## Cloud Migrations

Azure, AWS, GCP,  
Datacenters, and other  
cloud services



# CONCLUSION



**Summary of Services**



**Contact Information**



**Q&A Session**





# THANK YOU

 +91 20 4900 7000

 [info@clariontech.com](mailto:info@clariontech.com)

 [www.clariontech.com](http://www.clariontech.com)

