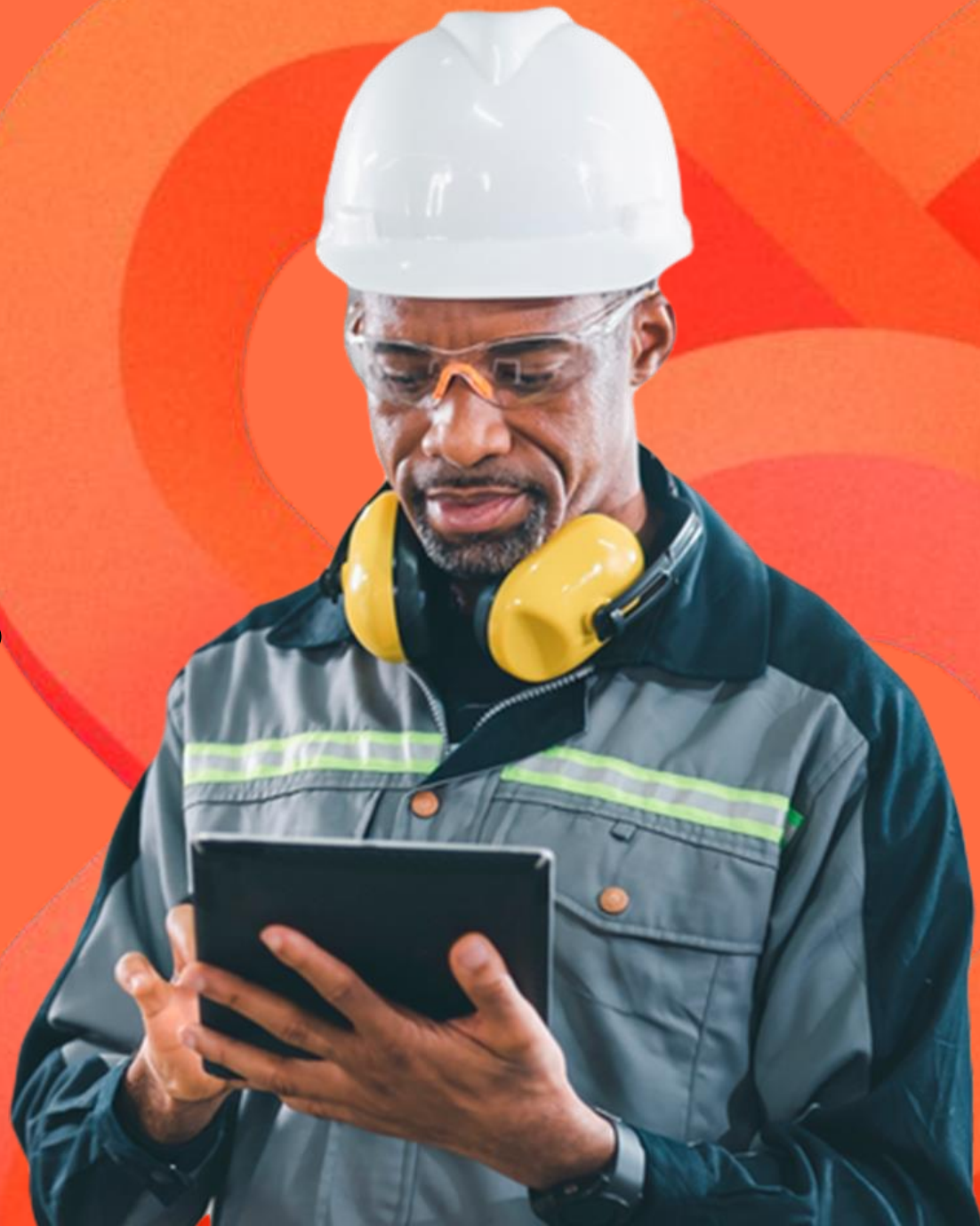
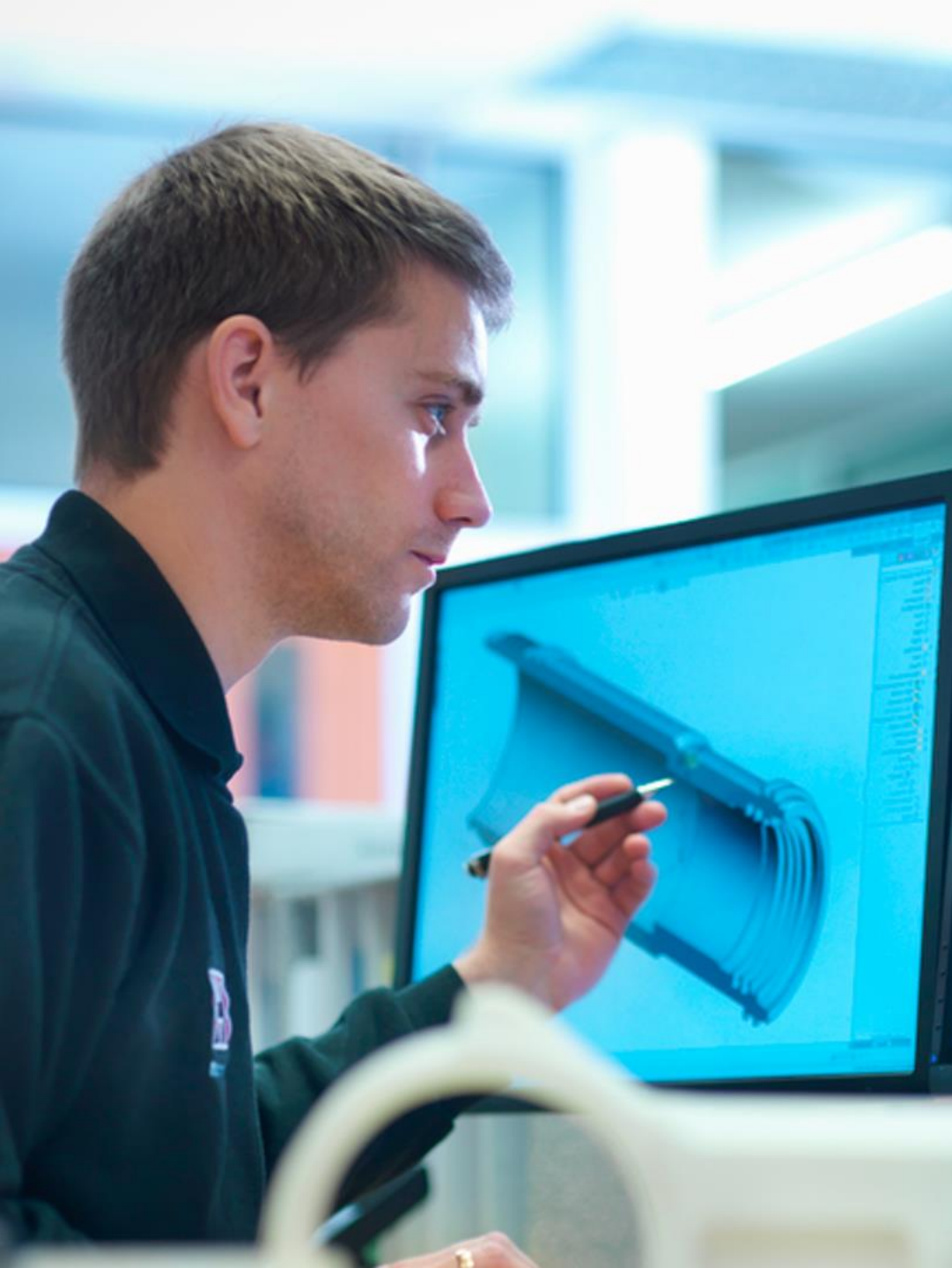


# Smart Factories

Scale your smart manufacturing capabilities





# Smart Factories



## How it works

Our innovative solutions help you build a connected shop floor supported by the following:

- Industrial data collectors
- Edge computing
- Operational technology cybersecurity
- Manufacturing execution systems and manufacturing operation management
- Supply chain and logistics
- Smart manufacturing and I4.0
- AI quality inspection
- Digital twins

We offer full lifecycle support—from consulting assessments and strategy development to roadmaps and business case scenarios.



## Strategies and solutions

This solution provides the following:

- A single data model for analysis across a range of operational use cases
- Cloud-based platform with a variety of connectors that support enterprise data and IT integration
- Integration with existing IT security and access tools to improve user experiences
- Common process modeling using OPC Unified Architecture information standards

# Smart Factories

Eviden helps address manufacturing challenges with a tailored approach to building smart manufacturing capabilities that maximize value.

## What We Offer

Our innovative solution portfolio can help you build a connected shop floor supported by the following technologies:

### Industrial data at scale

- Standardized data models that unlock immediate data insights
- Unique data source policies that support multiple use cases
- Universal connection policies that achieve immediate value with consistent data models

### Digital twins

- Ability to create virtual replicas of products and systems
- Monitoring, predictive maintenance, and performance optimization
- Improved efficiency, cost reduction, and extended lifespans for physical assets

### Secure industrial data and cybersecurity tools

- Governance, risk, and compliance
- Operational technology security
- Identity and access management
- Zero-trust consulting
- Cloud security consulting
- Penetration testing
- Incident response consulting

### Edge computing

- Advanced computing powers for any workload
- BullSequana Edge Devices that provide fast, on-site inference
- Edge vertical solutions, including edge infrastructure and computer vision with AI inference at the edge

### Quality inspectors

- Enhanced industrial data with AI-based quality indicators
- Comprehensive controls for assembly, surface defects, welding, inspection, and cosmetic quality across various manufacturing processes using advanced technologies like augmented reality, x-ray testing, and digital twins



# Smart Factories differentiators

Eviden provides specialized industry 4.0 consulting and technology solutions across offering components.

## Industrial data at scale

We provide a strong foundation for cross-plant scaling of Eviden Smart Factory. We model industrial processes, not equipment, to standardize to and scale across plants.

## 360-degree shop floor analytics

Our digital twin solutions help unlock more advanced cause-to-effect analysis and seamlessly connect operational technology data to your IT landscape, including manufacturing execution systems (MES), enterprise resource planning systems (ERP), and maintenance schedulers.

## Full security integration

Our cybersecurity solutions integrate multiple levels of segmentation, converged networking, secure SD-WAN, and comprehensive multi-cloud and hybrid-cloud security into a single platform to simplify operations, increase security, and reduce costs.

## AI-powered edge innovation

We harness the latest technological innovations for its AI-powered quality inspections to support early identification of defects and real-time alerts across use cases.

## Quality and flexibility

Our flexible solutions adapt seamlessly to industrial infrastructure and policies, resulting in immediate data insights through standardized models and promoting widespread data usage.

# A virtual, connected model for a British multinational pharmaceutical company

Our digital twin provides a 360-degree view of products and processes to drive business outcomes and mitigate production challenges.

## Challenge

This company faced the following challenges:

- Delayed time to market due to numerous complex processes, physical experiments, and staff trainings
- Limitations on operational excellence due to complex quality criteria, compliance regulations, and high maintenance costs
- Cost inefficiencies due to raw materials and batch waste, research and development costs, and out-of-spec products

## Solution

Eviden's fully integrated approach transformed our client's manufacturing facilities with the following solutions:

- A digital twin model that simulates the chemical mixing process, allowing multiple variants to be tested to ensure the right combination in live production
- A collaborative approach that drew on our IT and digital solutions expertise
- Physical processes replicated as virtual processes
- Testing live data against the control to measure KPIs



## Outcomes

Reduced development lifecycle and costs

Data-driven process design and optimization

Virtual training for engineers and operators

Operational excellence, guaranteed product quality, and more robust processes with advanced control strategies

Continuous process verification, in-line quality control, real-time performance monitoring, and process visualization

Higher yield through reduced raw material waste and preventive maintenance

# Contact Us

Email us at [global-microsoft@eviden.com](mailto:global-microsoft@eviden.com).

Eviden

EVIDEN

