



# OneTik – Automated Enterprise Migration

OneTik from OkTik Automates the Post-Merger Digital Integration Process

September 2023





## Mergers and Acquisition – IT integration as a critical factor

M&A Projects rely on fast user IT integration to deliver productivity gain.



### Primary challenge

End-user IT integration is critical to merged entities in delivering desired business results. The M&A team needs to be able to answer the question, “What have we got?” Clearly define the desired outcome and be able to get there at predictable cost.



### Automation is the key

Being able to quickly determine the “as is” user IT state and using automation to drive the migration process to deliver the defined outcome is critical to lowering cost/risk and delivering fast post-merger productivity benefit.



### Desired outcome

Merged teams can communicate and share data to support the expected business benefits. The merged environment is secure, predictable and cost controlled. Management dashboards underpin the basis for a “one team” scenario.

# OkTik, OneTik and Microsoft Azure

In a Microsoft-powered Modern Workplace (legacy or cloud), OkTik's OneTik agents automatically survey all critical technical elements to present a single view of two or more companies. Using the power of Azure, OneTik is able to use this data and a pre-defined set of scenarios to drive an automated move to a single integrated environment.



## Create an accurate view of the current Microsoft Workplace

Inventory of devices, OS, users, apps and licensing to build an accurate picture of technology and cost of the existing Microsoft estate

## Map "as is" onto defined Microsoft Workplace Outcome

Use the power of this data to define migration, power the automation, optimise license and other costs to fix time, cost and accelerate to complete

## Management Dashboards

Dashboards provide a real-time accurate view of migration to management, engineering and the business at all times. Creates a one-team feel and controls cost. Exemplary user support

# Single Touch User-Driven Automation

OneTik is an Azure-based platform that remotely surveys the enterprise user technical environment, then – using automation to reduce costs – migrates all activity to the target environment with minimal disruption to users while delivering clear project/cost control to managers.

## What have we got?

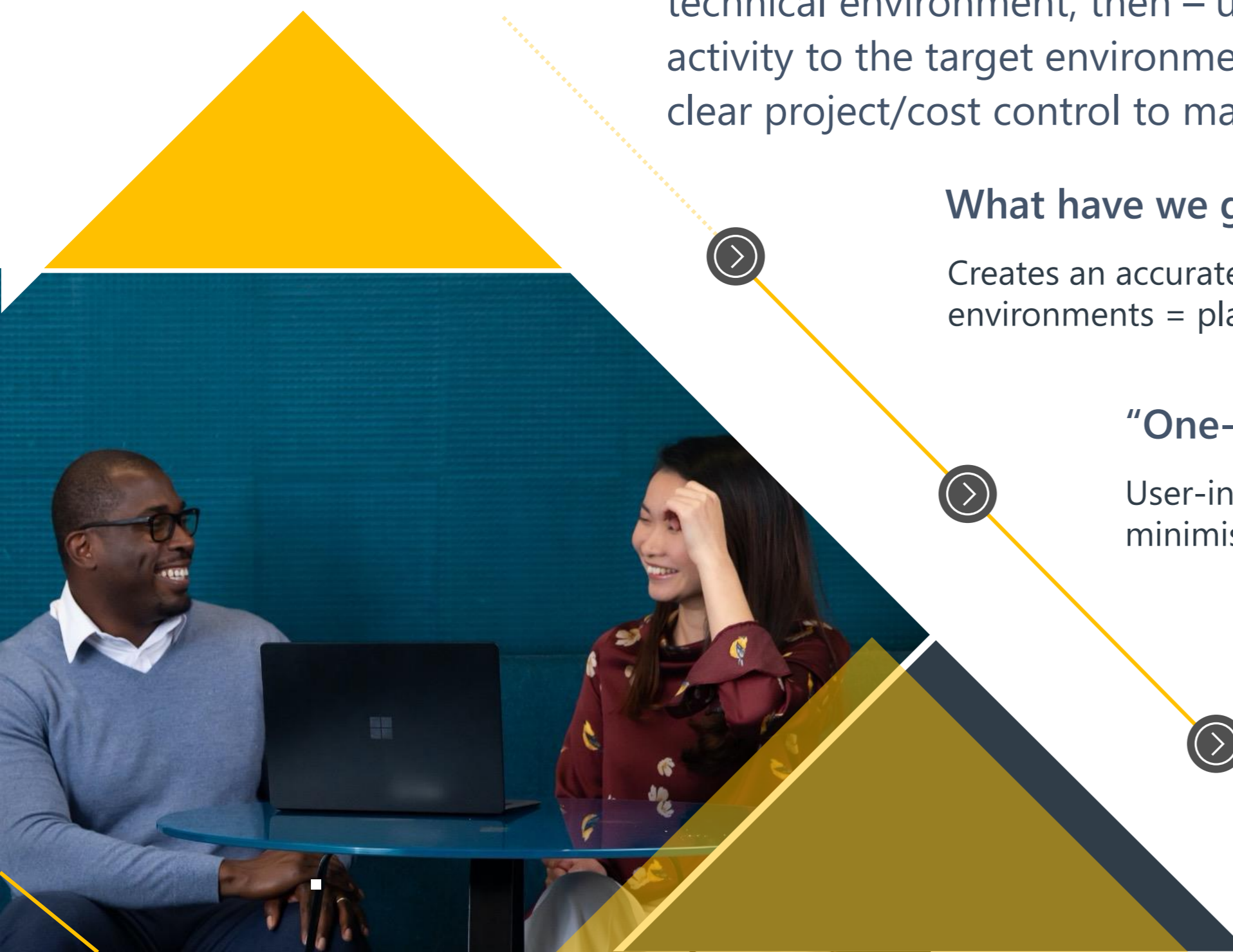
Creates an accurate data-driven view of multiple “as is” environments = plan with confidence

## “One-click User Automation”

User-initiated migration to predefined scenarios = minimised user impact

## Power of Dashboards

Real-time tracking to deliver great user support and clear cost control.



# Customer Success: Coca-Cola Europacific Partners. 50,000 Business User Migrations

*“To deliver complex change, you need to work effectively with third parties; OkTik truly integrate with us, creating a one-team spirit focused on solutions”*

- Neil Charlton, Director of Technology Solution Delivery  
Coca-Cola Europacific Partners

50,000 end user migrations delivered using OneTik as part of multiple M&A projects.

## ▶ Digital Workplace Foundation

Move all previously acquired businesses across 7 countries in Europe to a single integrated Digital Workplace

## ▶ Digital Workplace Integration

Further integrate an additional 20,000 employees across 5 Asia-Pacific countries in the acquired Coca-Cola Amatil business into this platform

## ▶ User Driven, Realtime Management Control

Real-time management dashboards provide project management coupled with zero data loss and great end-user support throughout. All delivered remotely



## Contact us to learn more about OneTik Automation

[www.oktik.net](http://www.oktik.net)

Call for more information: +44 1908015660

Ask a question via email: [sales@oktik.net](mailto:sales@oktik.net)

[See our offer on the Microsoft Commercial Marketplace](#)

**OkTik**  
The Digital Workplace. Reimagined.

**OneTik**  
Single-Touch. Automated. Delivered.