



# PubSub+ Platform

A complete event streaming  
and management platform for  
the event-driven enterprise.

**solace.**

Solace PubSub+ Platform helps enterprises design, deploy and manage event-driven systems across hybrid and multi-cloud and IoT environments so they can be more event-driven and operate in real-time.

## Cloud Console

A cloud-based interface that enables architects, developers and other users to access the PubSub+ Platform to work, collaborate, and drive the enterprise's EDA mission forward.

## Event Streaming

PubSub+ Mission Control and PubSub+ Event Broker combine to enable enterprise-grade event streaming within and across public clouds, virtual private clouds, and on-premises.

## Event Management

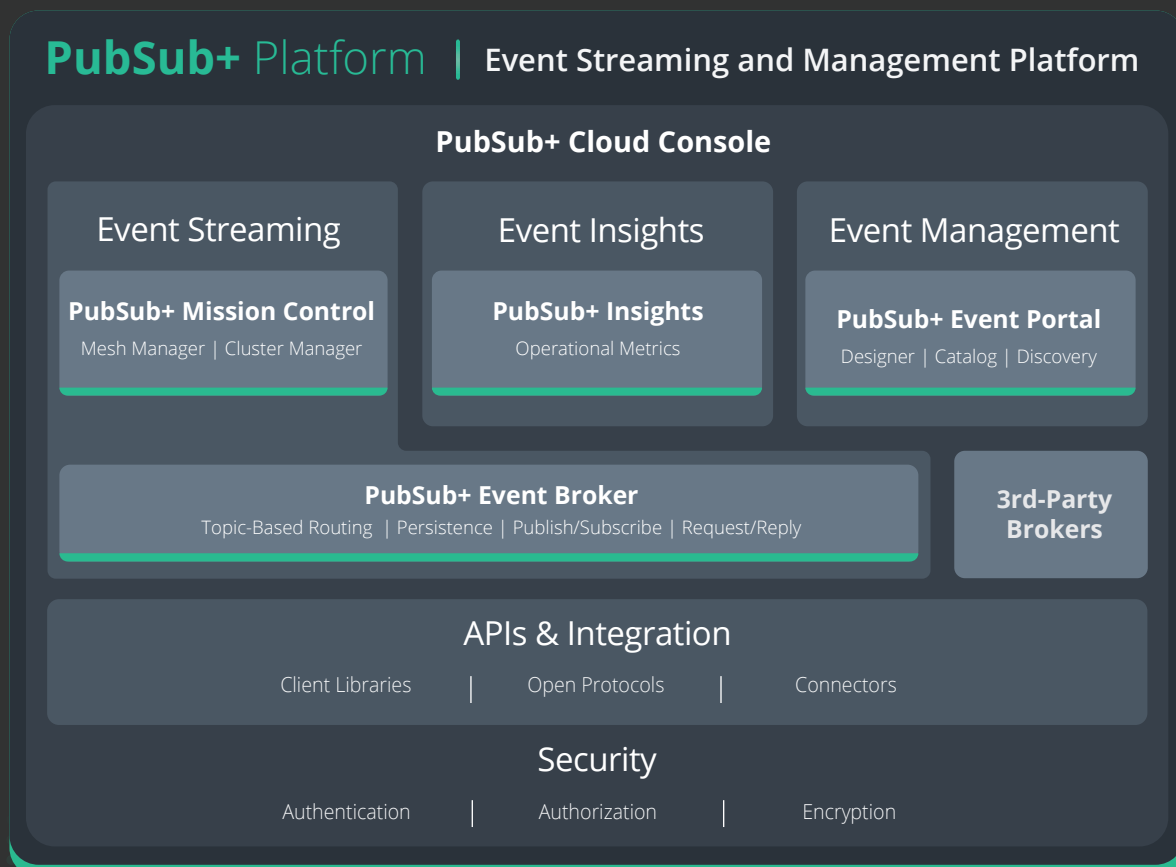
PubSub+ Event Portal gives developers and architects tools to design, describe and discover events within their system, and to see the relationships between applications and events so they can more effectively lifecycle manage and optimize event-driven applications and microservices. High-value events can be shared with internal and external developers to enrich customer experiences.

## Event Insights

PubSub+ Insights delivers centralized monitoring for PubSub+ Mission Control services to monitor the health and optimize the performance of the event-driven system.

## Integration

PubSub+ provides many on- and off-ramps to your event mesh, including support for open protocols and APIs, proprietary messaging APIs, edge streaming technologies to integrate 3rd-party applications, and connectors for technologies like Apache Kafka.



# PubSub+ Event Broker

Solace PubSub+ Event Broker efficiently streams events and information across cloud, on-premises and IoT environments. It supports a wide range of message exchange patterns including publish/subscribe, request/reply, streaming and replay, and qualities of service such as best effort and guaranteed delivery. PubSub+ Event Broker is available as an appliance, software and a service. All three options offer the same functionality and management experience..

## Management and Governance

- Centralized administration
- Authentication, authorization and encryption of assets and information
- Powerful and proactive monitoring and alerting, including integration with existing monitoring tools
- Built-in high availability and automated disaster recovery

## Capacity and Performance

- 29M non-persistent and 5.5M persistent messages/second per appliance
- 7.5M non-persistent and 450,000 persistent messages/second per software broker
- Up to 200,000 concurrent IoT connections per device

## Federated Architecture

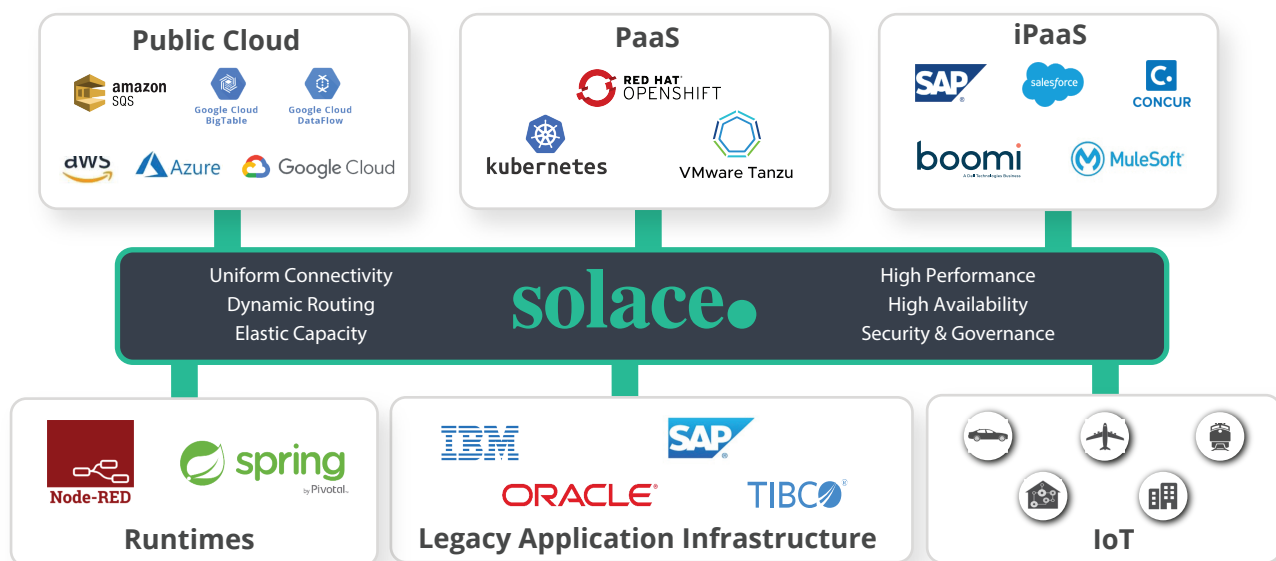
- Routing across geographically distributed cloud and on-premises environments
- Dynamic, self-learning routing
- Fast, bandwidth-efficient routing over wide area networks

## Advanced Messaging Capabilities

- Message caching and replay
- Sophisticated topics including wildcards
- Prioritization, dead message queues
- In-service upgrades

## What is an event mesh?

PubSub+ event brokers can be connected across environments, geographies and technologies to create an event mesh that dynamically distributes information from where events occur where its needed.

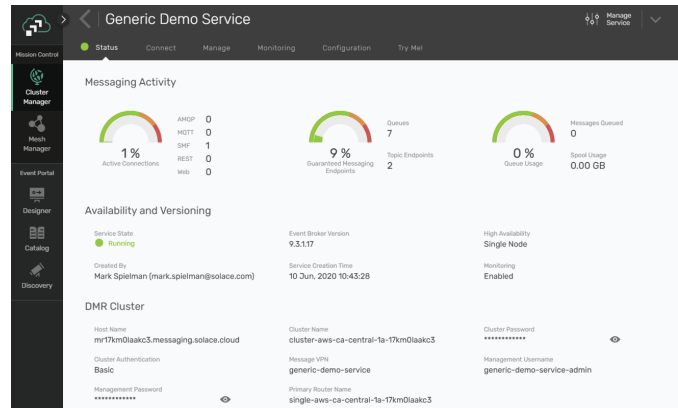


# Event Broker Deployment Options

## CLOUD

PubSub+ Event Broker is available as a fully managed service so you can spin up event broker services that meet your exact needs in mere minutes, and scale on demand to any level.

- Event broker services can be deployed in public clouds, virtual private clouds, and in on-premises Kubernetes environments and centrally managed from a cloud-based console.
- Managed “Ops” takes care of set-up, hosting, maintenance, upgrades, security and scaling of the messaging infrastructure.
- Web console, dedicated learning center and a REST API for CI/CD integration make it easy to manage.



## SOFTWARE

PubSub+ Event Broker is available as software you can install in almost any cloud or on-premises environment. It's available for free and as an enterprise edition that includes support.

- Runs on popular container and hypervisor platforms including Docker, Kubernetes, OpenShift, and VMware Tanzu.
- Quick Starts and connectors for cloud environments including Alibaba, AWS, Azure, GCP, Huawei and Tencent.
- Integrates with 3rd-party technologies including Kafka, MuleSoft, IBM WebSphere, Spring and TIBCO Business Works.

	Standard Edition	Enterprise Edition
Pricing	Free	Licensed
Use Cases	Eval, Dev, Prod	Eval, Dev, Prod
Messaging Functionality	Full	Full
Message Rate	Up to 10,000 messages/second	Unthrottled
Message Spool	Up to 240M messages or 800GB	Up to 3B messages or 6TB
Simultaneous Connections	1,000	200,000
Compression	Yes	Yes
TLS	Yes	Yes
MQTT, REST, JMS, Websockets	Yes	Yes
High Availability	Yes	Yes
Replication for DR	No	Yes
Support	\$	Yes

## APPLIANCE

PubSub+ Event Broker is available as a turnkey appliance that offers unparalleled performance and low, predictable cost of ownership.

- Turnkey, rack-mounted devices that are easy to deploy, manage and upgrade.
- Fully redundant system featuring 99.999% service availability
- Purpose-built, high-speed FPGAs and network processors eliminate the need for an OS and provide massive throughput and very low, predictable latency.
- Models: PubSub+ 3530, PubSub+ 3560

		PubSub+ 3530	PubSub+ 3560
I/O Cards		4x1GE	4x1GE, 8x10GE
Connections	Enterprise/JMS	6,000	30,000
	IoT, REST, Web	6,000	200,000
Non-Persistent Messaging Performance	Point to Point	2.9M msgs/sec	12M msgs/sec
	With Fan-out	3.5M msgs/sec	30M msgs/sec
	Latency	28 microseconds	20 microseconds
Persistent Messaging Performance	Point to Point	75,000 msgs/sec	620,000 msgs/sec
	With Fan-out	430,000 msgs/sec	5,500,000 msgs/sec
	Throughput	1 Gbps	9.5 Gbps

# PubSub+ Event Portal

PubSub+ Event Portal is an event management toolset that adds design, governance, and runtime management capabilities to Solace PubSub+ Platform. PubSub+ Event Portal makes life easier for architects and developers because it provides a single place for managing all events, applications, and schemas within an enterprise with any underlying infrastructure.

## Discover Event Streams

Use a runtime discovery agent to easily scan and upload your event streams from Apache Kafka, Confluent and Amazon MSK clusters.

## Catalog Your Event Data

Document and track existing topics, schemas, event meshes, pub/sub interfaces for each application, owners and points of contact, and changes for each of the managed EDA entities

## Design and Visualize Event Flows

Map and visualize relationships between applications and events using a dynamic topic builder with built-in best practices.

## Manage the Lifecycle of Events without Chaos

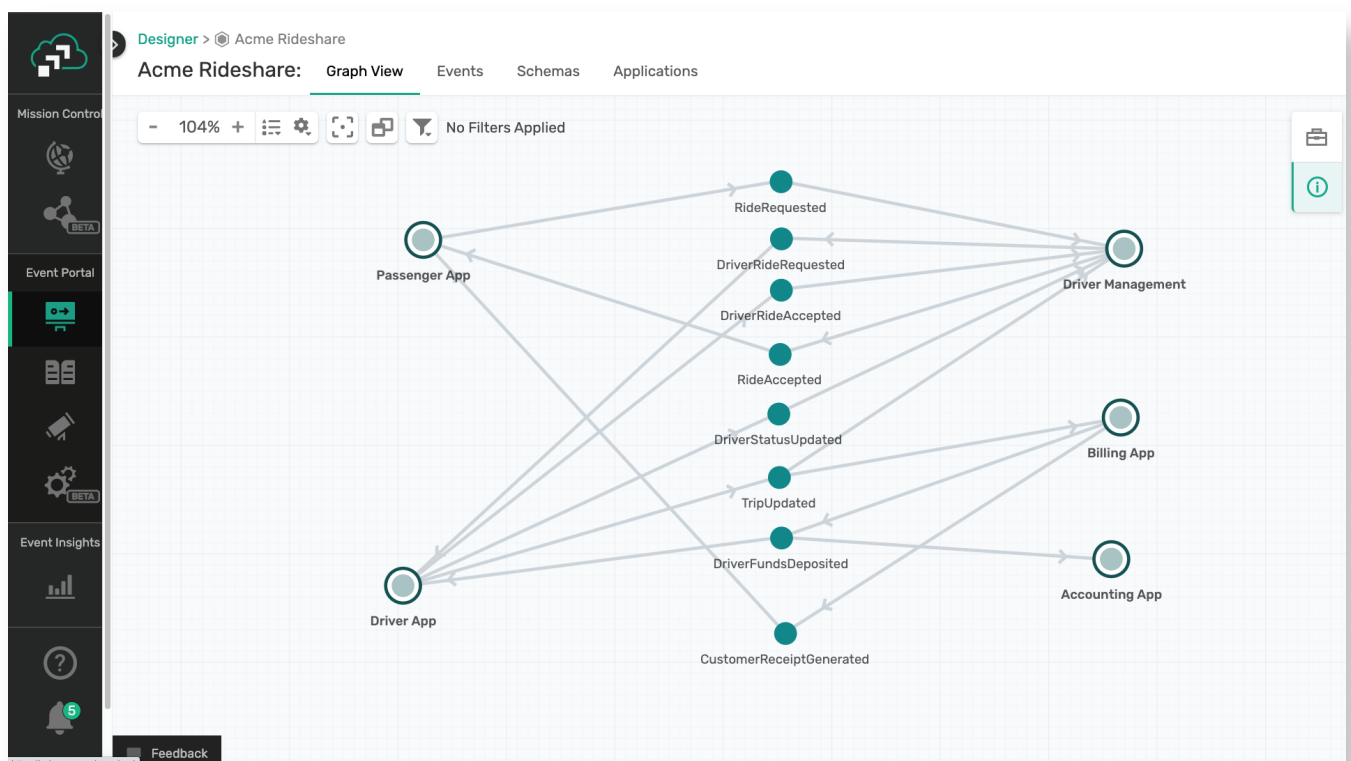
Easily evolve your design by making updates to existing apps, events, and schemas.

## Control Your Event Data

Track changes, control runtime bindings and use multiple specifications for clients and interfaces.

## Expose Event API Products

Curate and share sets of related high-value business events with internal and external developers to enrich customer experiences.



# PubSub+ Insights

PubSub+ Insights gives customers who have deployed PubSub+ Event Broker services in the cloud and/or on-premises the ability to easily monitor and manage the behavior and performance of their services and the applications that rely on them.

**Keep applications and PubSub+ Cloud event broker services running at peak efficiency** by collecting and reporting on hundreds of critical service metrics and events so you can proactively detect and address issues before they impact business applications.

**Right-size your system** by being aware of system capacity and rate of change so you can optimize your event broker estate based on current requirements and easily scale up or down as needed.

**Better understand application behavior** with preconfigured dashboards available in Datadog that have been designed based on best practices to provide granular information about how events are flowing between applications, or build custom dashboards to meet your specific needs.

**Investigate and troubleshoot with ease** using historical and current monitors and notifications set to best practices-based thresholds that will alert you to any issues that require attention.

