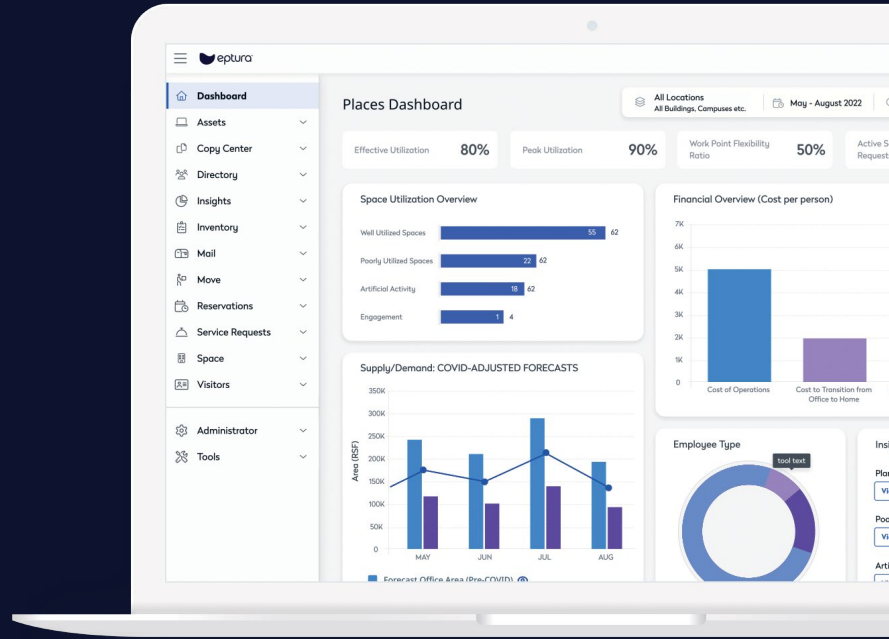




# Eptura Workplace

Optimize your real estate for today's world



## Create a space that fosters collaboration while maximizing your real estate ROI

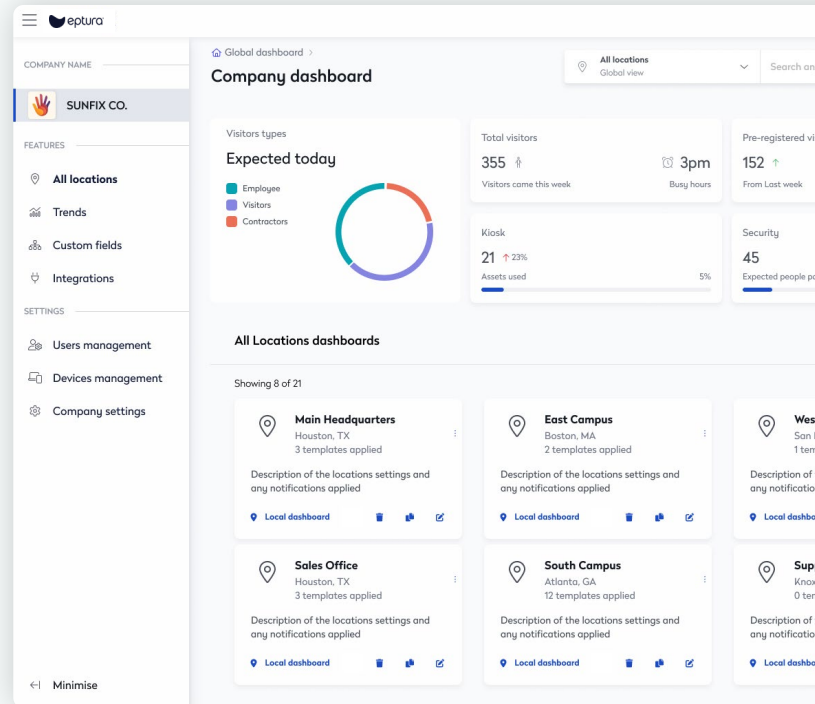
In a constantly evolving world of work, it's never been more important to stay nimble and ensure your office is adaptable to the changing needs of both your business and your people. With Eptura Workplace, you get the tools you need to support hybrid work, manage visitors, and make better use of your space. And because it's backed by powerful analytics, you can rest assured that you're making data-driven decisions that propel your business forward.

However your teams prefer to work, you can bring them together and help everyone perform at their best with workspace booking, planned collaboration, simplified service requests, and easy wayfinding, ensuring employees get the most of their time in the office. And with streamlined visitor and guest check-ins, you can keep everyone safe and secure while you're at it.

Whether you're facing the challenge of retooling your existing footprint or identifying new locations to eliminate unnecessary real estate costs, Eptura's intuitive space planning tools and smart analytics help you reimagine your facilities in detail on a global, local, or floor plan level.

“Eptura allowed us to underpin decisions with statistics, transforming our workspaces into cost efficient, collaborative areas.”

# Everything you need to manage your office at scale



## Reconnect employees, drive planned **collaboration**, and maximize **productivity**

- Plan your workweek based on when your teammates and cross-functional collaborators are in the office.
- Reserve workspaces and amenities near the people and teams that matter most to you.
- Find available conference rooms that meet the needs of every meeting. Integrated calendar invites extend hybrid functionality to in-room hardware and automatically find new rooms if the meeting is rescheduled.
- Search for coworkers, available desks and meeting rooms, and help new employees and visitors effectively navigate your workplace.
- Track and monitor employee maintenance and IT requests and ensure they have everything they need to be productive in the office.



## Secure the **workplace** and make hosting clients and visiting employees seamless

- Welcome visitors into the workplace with an experience that doesn't compromise your company's health, security, or compliance objectives.
- Sync visitor and employee data with your access control system, send unique QR codes to grant access at the right time, and get real-time information about who is in the building.



## Get more from workspaces through office **space monitoring** and **utilization analysis**

- Embrace worktech to automate data, uncover trends, and visualize opportunities in your environment.
- Understand peak utilization and frequency to identify office occupancy patterns and get an accurate overview about how employees are interacting with the space.
- Use specialized projection tools like growth rates and workplace capacity to estimate future real estate needs.
- Pull floorplans in from Autodesk, integrate with access control systems, and pair resources with Microsoft 365 applications.



## Retool existing space and make relocations a breeze

- Plan with powerful interactive dashboards and drag-and-drop tools to visualize space accommodation.
- Document evidence of compliance for internal standards and regulatory requirements.
- Visualize individual or group moves to get necessary approvals ahead of time while keeping your people and vendors informed of changes.
- Map and quantify all the resources and amenities in your building, from emergency equipment and signage to furniture and shared technology.



The **meeting room booking system** does exactly what we needed. It's **easy to use**, and our users rarely need additional help.



The screenshot displays the eptura dashboard interface. At the top, it greets the user 'Hello Anna, you have 4 bookings and 2 visitors today'. Below this, there are three main cards: 'Next room booking' for Meeting Room C (11:45 - 12:45), 'Next desk booking' for Desk 432 (All day), and 'Next visitor' for Jackie Chan (13:00). Each card includes a 'Check in' button. Below these are search filters for rooms and desks, including dropdowns for Region (London), Location (Exchange Tower), and Group (Self-managed), along with date and time pickers. At the bottom, a table titled 'Today's bookings' shows the following data:

| Campus        | Title         | Room/Desk      | Status      | Location       |
|---------------|---------------|----------------|-------------|----------------|
| All day       | Desk 432      | Desk 432       | In progress | Exchange Tower |
| 11:45 - 12:45 | Team Workshop | Meeting Room A | In progress | Exchange Tower |



# work your world™

Eptura is a global worktech company that provides software solutions for people, workplaces and assets to enable everyone to reach their full potential. Our scale and expertise helps organizations to engineer a thriving work environment, by giving them the understanding they need to enhance their employee experience, workspaces, and asset value.