



Corporate Social Responsibility App by Embee

Empowering Organizations to Achieve Greater Impact through Innovation

Today, Corporate Social Responsibility (CSR) is not just a moral obligation but a strategic necessity, our custom CSR application is a testament of innovation and efficiency. Developed to address the complex challenges of managing CSR initiatives, this application revolutionizes how organizations track, manage, and report on their CSR efforts, enabling them to maximize their societal and environmental contributions.

Key Functionalities of the CSR Application



Real-Time Budget Tracking and Management

A dynamic dashboard provides immediate insights into budget allocations versus actual spending across various projects.



Volunteer Management

Enhance volunteer engagement with a registration portal for employees where they can not only nominate themselves but also their family members, and a log of volunteer hours and activities, offering valuable data for assessing participation and impact.



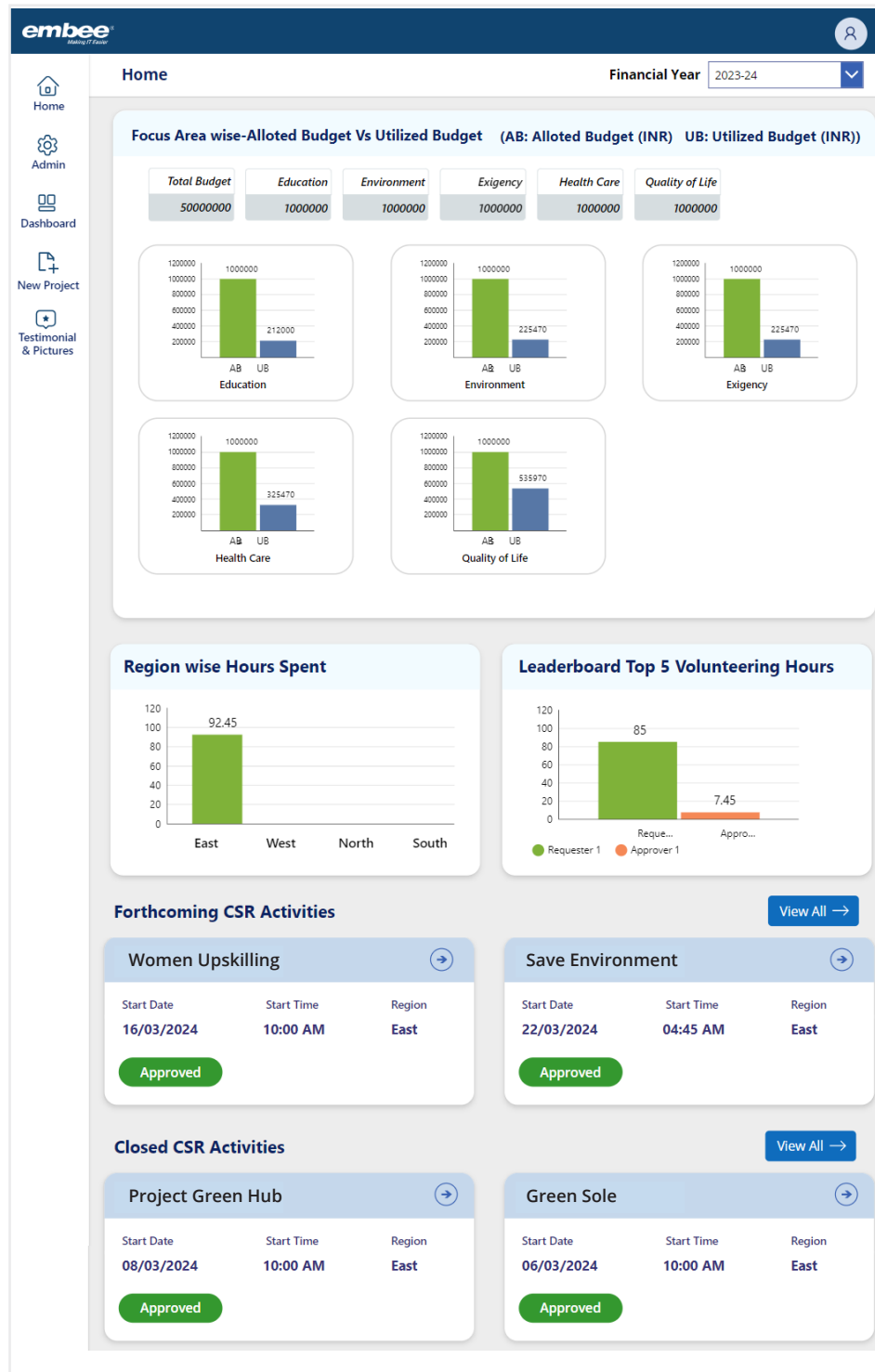
Project Management

Streamline the entire lifecycle of CSR projects, from initiation to closure, with features that include project creation, an approval workflow.



Reporting and Documentation

Advanced reporting for both ongoing and completed projects facilitate detailed impact assessment and documentation, with features for creating Work in Progress (WIP) reports, generating final reports, and automated email notifications for stakeholders.



Tools & Technologies Used

The application leverages **Microsoft PowerApps, Power Automate, and SharePoint Online** to provide a comprehensive, user-friendly platform that streamlines CSR management processes, enhances volunteer engagement, and delivers impactful reporting and analysis.

Benefits and Impact



Streamlined Operations

The application simplifies the management of CSR projects, eliminating cumbersome paperwork and spreadsheets, and allowing for real-time tracking and management.



Enhanced Volunteer Engagement

A user-friendly volunteer management module increases participation and fosters a sense of community and purpose among employees and their families.



Elevated Reporting and Impact Analysis

With detailed insights into each project's effectiveness, organizations can tailor future initiatives for greater impact, showcasing the power of data-driven decision-making in CSR activities.

Discover how our CSR application can transform your organization's approach to corporate social responsibility. Connect with us to explore the application's functionalities and learn how you can leverage technology to make a more significant, sustainable impact.

Book a demo now at connect@embee.co.in to take your CSR initiatives to the next level with our cutting-edge solution.