



# YOUREDİ RAPİDS AIR TRACK & TRACE DATA CONNECTİVİTY

The most efficient way to track multiple shipments from a range of carriers at once directly from your system.



- + AIR FREIGHT TRACKING PROCESS AUTOMATION
- + RAPID PARTNER ONBOARDING
- + SEAMLESSLY WORKS WITH ANY AIRLINE WORLDWIDE
- + COMPLETE END-TO-END VISIBILITY

## **Youredi Rapids Air Track & Trace Data Connectivity is a one-stop-shop for all your air freight logistics needs.**

Air freight is super convenient and the fastest way to deliver your cargo. However, tracking your shipments could be a nightmare, especially if you work with multiple cargo airlines.

Youredi Rapids Air Track & Trace Data Connectivity automates this process, allowing you to follow the route of your goods across all the airlines with which you work. You can see all your business-critical shipment information within a single preferred application or your primary IT system—whichever works best for your business.

This way, you'll always know the exact status of your goods, and you'll be able to change your processes as needed.

Using Youredi Rapids Air Track & Trace Data Connectivity, you will achieve improved supply chain visibility and increase the efficiency of your operations.

# YOUREDİ RAPIDS AIR TRACK & TRACE DATA CONNECTIVITY



## How Does Youredi Rapids Air Track & Trace Data Connectivity Work?

We simplified how you track your air cargo shipments using air waybills. We connect you with the airlines, so you'll receive automated status updates. The process is simple:

### 1. List the airlines you work with

We have established connections with over 30 airlines worldwide. However, it is possible to connect you with any airline you work with; just provide us with the list of your partner airlines, and we'll handle everything else.

### 3. Youredi will implement the solution

The Youredi Professional Services Team will develop the solution, test it, and deploy it into production. We will help you maintain the solution, so you can always get reliable information from the airlines.

### 5. Start tracking your air freight

Your team can follow the movement of your freight on a map provided by Youredi, or we can simply supply you with the information so that you can visualize the route of the shipments yourself.

### 2. Provide the Letter of Authorization

Once you've delivered us the Letter of Authorization, Youredi will contact the airline to get the necessary support on setting up connectivity between the airline and your system.

### 4. You'll receive information within your system

When the implementation is ready, you need not get status updates from the tracking pages of the airlines. All the information will be delivered to your preferred system so you can keep an eye on all your shipments.

### 6. Use the data for creating insights

While you will have real-time intel on all your shipments, you can use the information you gathered to generate insights that you can use to optimize and enhance your end-to-end supply chain.

## Key features of the solution

As a leading provider of data integration solutions for logistics and the global supply Chain, Youredi's team has extensive data connectivity and management experience. Our solutions are based on the unique Youredi iPaaS platform, capable of working with various data formats, standards, and interfaces. With our fully managed solutions, you can elevate your data integrations to a new level without having to change your IT system.

### Fully managed service

You don't have to deal with anyone else to make it work. The service is fully managed, meaning we will take care of the whole process from the design phase through deployment to maintenance.

### No changes to your IT system required

The solution we provide is cloud-based and has a layer added to clients' existing systems, whether cloud systems, apps, or legacy systems, which is common in the global ocean shipping industry. Utilizing the Youredi Rapids Air Track&Trace connectivity solution, you don't need to change your existing solutions and may continue using data standard and format conveniently for your operations..

### Predictable pricing

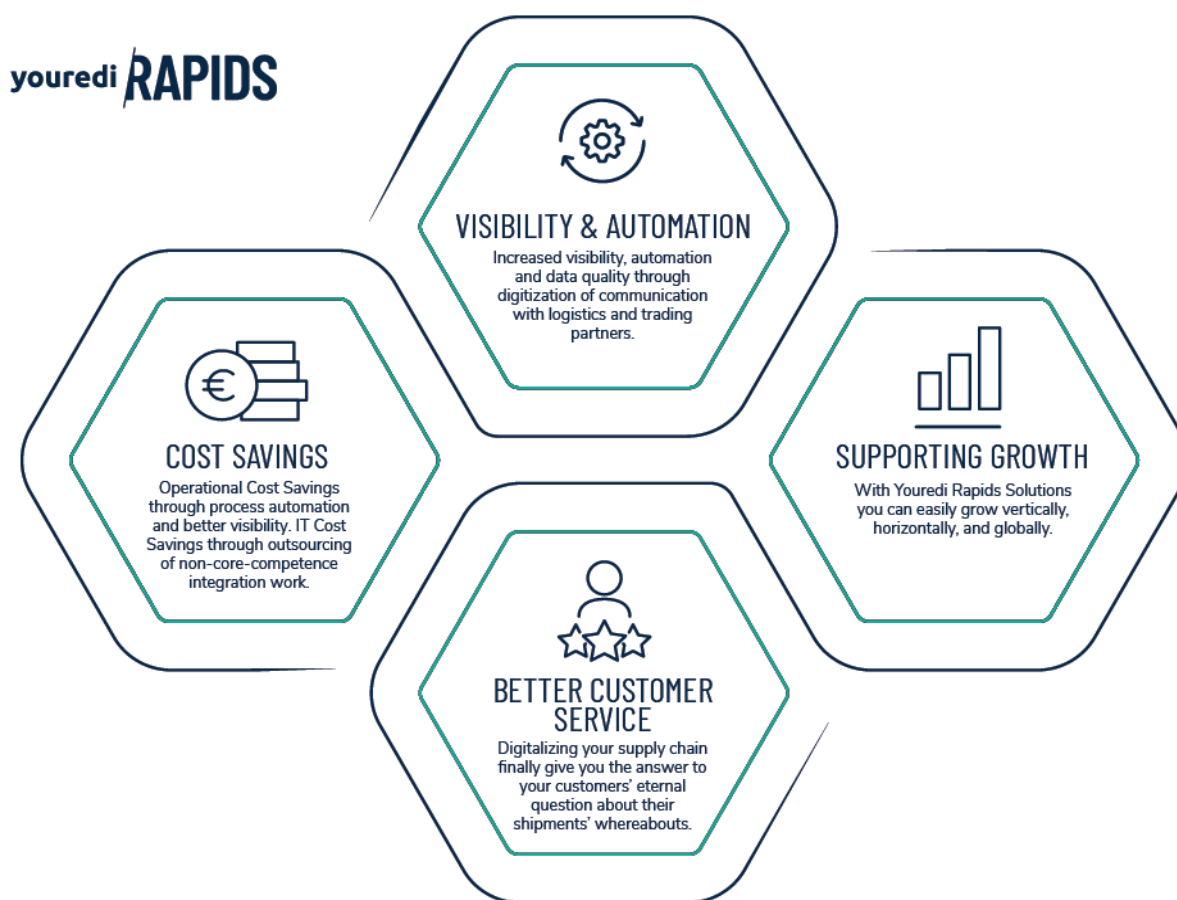
We offer a predictable subscription-based model that incurs a one-time setup fee and a monthly payment depending on the usage of the service.

# YOUREDİ RAPIDS AIR TRACK & TRACE DATA CONNECTIVITY

youredi **RAPIDS**

## The benefits to expect

Relying on our service, you get complete visibility and control over transportation processes. Also, you will get the advantages inherent to the entire line of Rapids products.



**Are you interested?  
We provide you with  
more information.**

GIVE US A CALL

**+ 358 207 3520 84**

OR SEND US A MESSAGE

**rapids@youredi.com**

Youredi provides fully managed B2B integration services to enterprises of all sizes developed and deployed on top of Youredi's integration platform as a service (iPaaS). Youredi has a global presence with offices in Helsinki, Finland, Amsterdam, Netherlands, and New York, USA.

Contact us for more info  
rapids@youredi.com  
Phone: +358 207 3520 84  
Phone: +1 929 207 9070  
[www.youredi.com](http://www.youredi.com)

