

Accelerate and simplify **cloud transformation** journey

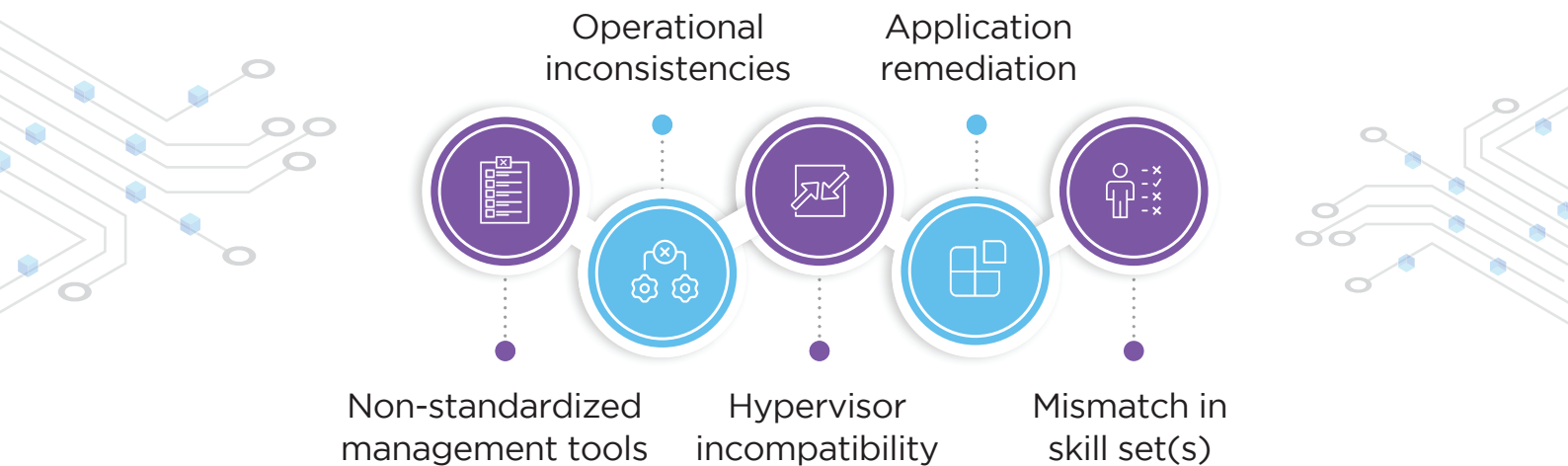
Seamless migration and deployment of
on-premise workloads with Azure VMware
Solution (AVS)



Taking the transformation drive

In this era of rapid digitization powered by cloud transformation, enterprises have refocused their strategic goal toward achieving resilience across all major digital touchpoints. Some of the factors that influence companies in this journey include investors prioritizing exceptional revenue growth, increased customer expectations for seamless cross-channel experiences, and the organization's ability to quickly accommodate to dynamic market shifts. Hence the need for agility, quick deployment, better cloud economics, and an overarching vision for management on cloud investments.

Some of the traditional challenges associated with a typical hybrid cloud solution include:



Organizations now demand hybrid cloud models that enable comprehensive digital transformation, alleviate complexity and disruption in existing value chain, and unlock financial flexibility.

Combat cloud deployment challenges with AVS

Microsoft Azure VMware Solution (AVS) is a unique hybrid cloud solution that enables enterprises to seamlessly migrate, extend, and deploy their on-premise VMware on Azure bare metal infrastructure powered by VMware SDDC (Software-defined Data Center). It mitigates the challenges within the hybrid cloud ecosystem with an integrated and standardized set of tools, APIs, security, governance, and operation policies for both on-premise and cloud landscapes. The additional features offered by the AVS solution also:



Accelerates business agility without compromising on security, compliance, and regulatory requirements



Utilizes existing investments on skill sets and expertise in current VMware tools and technology



Provides a unified layer to manage and automate the entire infrastructure lifecycle



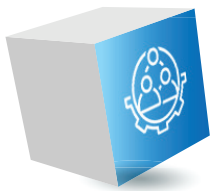
Eliminates integration overhead for third-party tools

Advantages of AVS



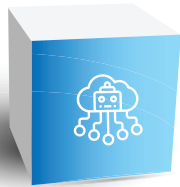
Flexible Solutions to suit Dynamic Business needs

- Bring Your Own License (BYOL) for Microsoft and VMware products
- Retention and utilization of existing VMware skill sets
- Direct access to native Azure Cloud capabilities such as AI/ML, DevOps toolchains, and storage, etc.
- Lower Total Cost of Ownership (TCO) and better Return on Investment (ROI)



Enterprise-grade capabilities for Application and Workforce

- Highly secure and accessible
- Increased employee productivity with improved accessibility
- Agile operating model that employs DevSecOps and SRE principles with operational efficiencies
- No extra cost, effort, or risk associated with re-architecting applications and re-tooling operations



Future proofing the cloud journey

- Cloud-ready solution powered by Azure Public cloud infrastructure and services
- Bidirectional cloud transformation from on-premises to AVS for a true hybrid cloud experience
- Single support pane from Microsoft to eliminate multi-vendor complexity

Prominent Use Cases of AVS

Here are some relevant instances where the Azure VMware solution can be utilized to maximize business outcomes:

- Cloud extension and cloud bursting
- Automation and agile infra with cloud capabilities
- Lift-and-shift of high total cost of ownership (TCO) workloads to avail benefits of cloud economics
- Application modernization leveraging microservices, DevOps, and containers
- Elevate non-compliance challenges
- End-of-life workloads migration
- Mitigation of capacity bursting
- Disaster recovery enablement
- DC exit strategy

The AVS Promise*

Free for **3 Years**
Security updates for
Windows 2008 and
SQL 2008

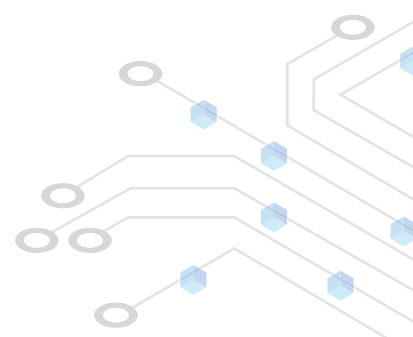
Save up to **75%**
Licensing cost on
Windows 2008 and
SQL 2008 migration

Conserve up to **90%**
Licensing cost using
Azure Hybrid usage
benefits

Save up to **50%**
Infrastructure cost
using reserved
instance

99.9%
in Service Level
Agreement (SLA)
Best-in-class support
and availability

*Subject to Microsoft's approval



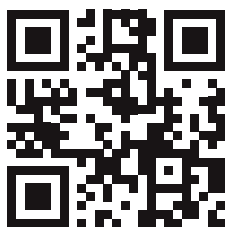
Why HCL

- HCL is a Microsoft Gold-certified partner and Microsoft Expert Managed Service Provider (MSP)
- HCL offers AI-driven cloud managed services validated by Microsoft
- Extensive pool of Microsoft certified resources working on VMware-based solution
- Capability to design and implement AVS with Microsoft Azure extension
- Close engagement with Microsoft from Day 1 till release
- VVD-certified framework with VCDX certified resource
- 360-degree partnership engagement with VMware



HCL Technologies (HCL) empowers global enterprises with technology for the next decade today. HCL's Mode 1-2-3 strategy, through its deep-domain industry expertise, customer-centricity and entrepreneurial culture of ideapreneurship™ enables businesses to transform into next-gen enterprises.

HCL offers its services and products through three lines of business - IT and Business Services (ITBS), Engineering and R&D Services (ERS), and Products & Platforms (P&P). ITBS enables global enterprises to transform their businesses through offerings in areas of Applications, Infrastructure, Digital Process Operations, and next generation digital transformation solutions. ERS offers engineering services and solutions in all aspects of product development and platform engineering while under P&P. HCL provides modernized software products to global clients for their technology and industry specific requirements. Through its cutting-edge co-innovation labs, global delivery capabilities, and broad global network, HCL delivers holistic services in various industry verticals, categorized under Financial Services, Manufacturing, Technology & Services, Telecom & Media, Retail & CPG, Life Sciences, and Healthcare and Public Services.



www.hcltech.com

As a leading global technology company, HCL takes pride in its diversity, social responsibility, sustainability, and education initiatives. As of 12 months ending on March 31, 2021, HCL has a consolidated revenue of US\$ 10.17 billion and its 168,977 ideapreneurs operate out of 50 countries. For more information, visit www.hcltech.com