



Mitiga

# Introducing EarthScan™

Discover, analyze and act on the climate risks  
and opportunities facing your assets.

## Why EarthScan and why now?

Climate volatility is accelerating at a rate the world has never seen. It's putting trillions of dollars of physical assets at risk. This global shift means it's more important than ever to understand how those risks could affect your physical assets. And to make decisions - informed by the right data - to secure their future. From pinpointing your greatest vulnerabilities to identifying emerging opportunities, EarthScan gives you asset-level analysis and the insight you need to make better decisions today for a more resilient tomorrow.

EarthScan gives you the knowledge and understanding you need to answer climate-related, business-critical questions, so you can make decisions, plan and take action on your most valued assets:

- What are the biggest climate risks for my existing and planned new locations?
- Which of my built assets have been affected by climate risks over the last X years?
- Which of my assets are likely to be affected by climate risks in the coming years and do I need to look at divestment strategies?
- Which of my assets will see the greatest acceleration in risk (single hazard or multivariable) and what risk mitigation plans do I need to put in place?
- Which assets have seen the most variability historically?

**80%** of enterprises expect climate events to create a drag on their business performance in the next **5** years.



## What is EarthScan?

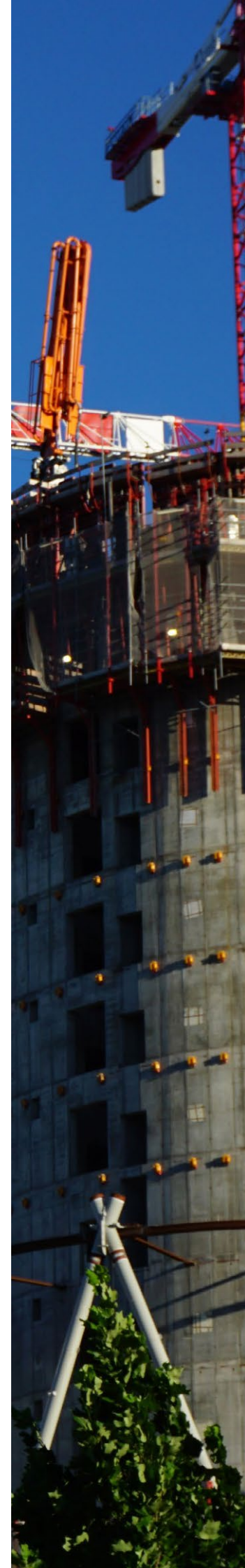
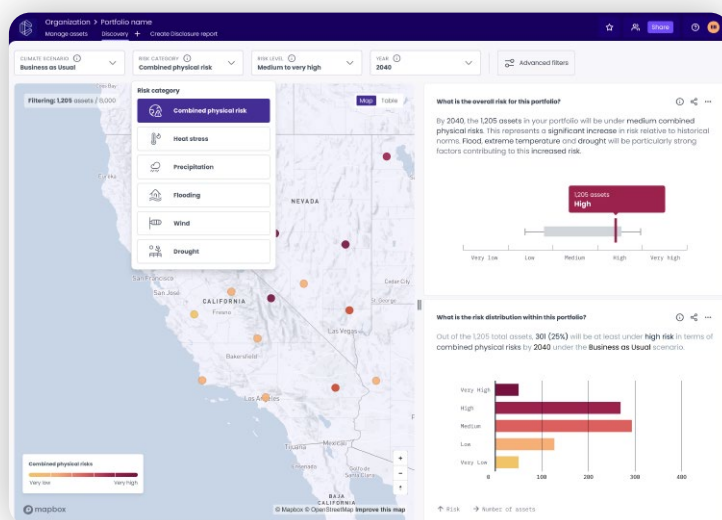
Bringing together world-leading Earth Science expertise, data modelling, and machine learning, EarthScan's personalized on-demand analysis allows you to understand climate risks underpinning the assets you value most. Going back 50 years and looking ahead 80 years, it provides critical insight into acute and chronic risks such as flooding, droughts and extreme temperatures. This helps you baseline monitor, and forecast climate risk and make confident decisions about whether to invest, divest, shore up or double down on assets in your portfolio.

## Who is EarthScan for?

EarthScan is relied upon by organizations with large numbers of physical assets, from manufacturing plants to power stations, factories to five-star hotels. Whether you're responsible for Risk, Operations, Profit and Loss Forecasting or ESG, if quantifying and reducing climate risk to your assets is your responsibility, you'll find EarthScan is indispensable for making decisions that impact your business performance.

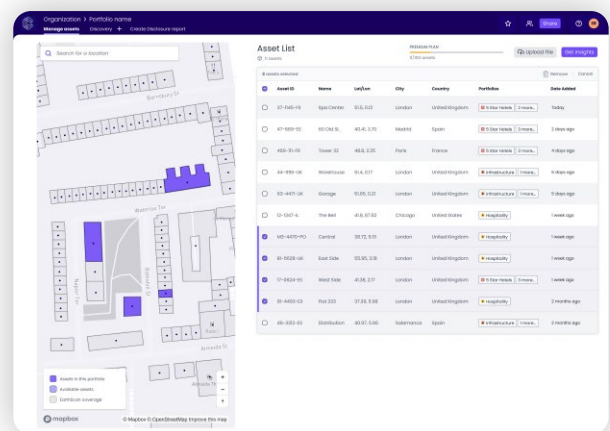
## What can it tell me?

Making decisions under uncertainty for a fast-changing future is always challenging. The continuously evolving climate picture makes it radically harder. Where is the greatest risk in your portfolio – now, and in the future? How often and how severely could extreme temperatures, flooding and wind storms affect your assets across coming years or decades? With millions of built assets already mapped (and growing daily), EarthScan has clear, science-backed answers across geographies, time horizons and risk scenarios. EarthScan gives you a health check of your assets to develop informed risk mitigation and resiliency plans that ensures the top and bottom line.



# How do I use EarthScan?

Use EarthScan to build your personalized mapped portfolio. Analysis is available on-demand: up-to-the-minute insights are available at anytime from your dashboard. Explore various climate signals, time horizons or scenarios at asset or portfolio-level; understand your customized risk ratings; and generate and share standardized risk reports for disclosure or risk mitigation planning across your organization.



## Create your own Portfolio of Assets

EarthScan allows you to quickly and easily find your global assets and add them to your own Portfolios. You can even upload your own assets.

## Understand your different scenarios

Choose a future climate scenario to see the potential impact of climate volatility on your assets:

- Business as usual: Emissions continuing to rise throughout the 21st century.
- Emissions peak in 2040: Emissions that do not increase beyond 2040.
- Paris-aligned scenario: Emissions scenario is Paris-aligned.

**Climate scenario**

↗ **Business as Usual** SSP5-8.5

Under the SSP5-8.5 Scenario, emissions continue to rise over the 21st century.

---

↗ **Emissions peak in 2040** SSP2-4.5

Under the SSP2-4.5 Scenario, emissions do not increase beyond 2040.

---

↗ **Paris aligned** SSP1-2.6

Under the SSP1-2.6 scenario, emissions are aligned with the Paris agreement.

## Select Your Climate Signals

EarthScan contains multiple climate signals including heat stress, precipitation risk, flooding, wind risk, and drought, but it doesn't stop there — we'll be adding more signals in the future. This enables you to see your risk across single or combined physical risk.

**Risk category**

⚠ **Combined physical risk**

🔥 **Heat stress**

☁ **Precipitation**

🏠 **Flooding**

🌪 **Wind**

🌵 **Drought**

## Share with Your Colleagues

Helping you make informed business-critical decisions, share your portfolios and insight with colleagues across your business.

**Share this Portfolio** ✕

**With:**   Share

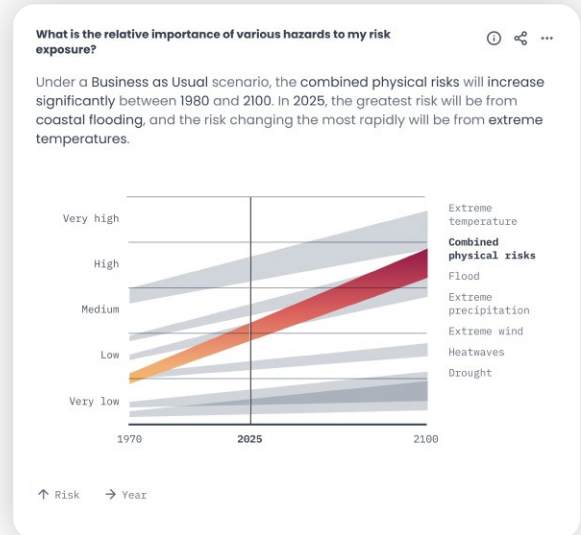
[^ What are the different sharing permissions?](#)

<span style="background-color: #f1c40f; border-radius: 50%; padding: 2px;">CM</span>	<b>Caroline Mills</b> <small>caroline@hotelsinc.com</small>	Admin ▾
<span style="background-color: #a63d4a; border-radius: 50%; padding: 2px;">DM</span>	<b>David Martínez</b> <small>david@hotelsinc.com</small>	Editor ▾
<span style="background-color: #6b46c2; border-radius: 50%; padding: 2px;">EJ</span>	<b>Esther Johnson</b> <small>esther@hotelsinc.com</small>	Editor ▾
<span style="background-color: #f39c12; border-radius: 50%; padding: 2px;">FG</span>	<b>Fernando González</b> <small>fernando@hotelsinc.com</small>	Viewer ▾
<span style="background-color: #c0392b; border-radius: 50%; padding: 2px;">GB</span>	<b>George Bourne</b> <small>george@cervest.earth</small>	Viewer ▾

**Copy Link**  
Only EarthScan users with existing permission will be able to access this portfolio

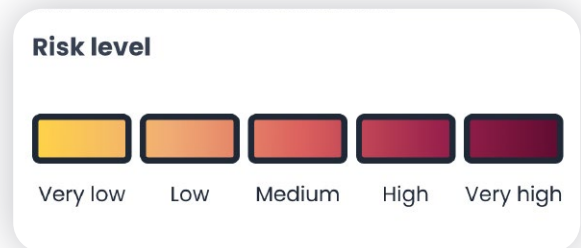
### Discover Vital Insights & Answer Business Critical Questions

EarthScan Insights provide you with an expert interpretation of asset and portfolio-level physical risk, helping to understand when, where, and why climate risk will impact assets.



### Discover Your EarthScan Ratings

Bringing together artificial intelligence (AI) with methodologies from statistical science enables EarthScan to extract the asset-level climate signals that matter the most, and translate them into EarthScan Ratings. Get translated and accessible science-backed Ratings ready for you to make informed decisions.



### Choose Your Time Horizon

EarthScan can look back 50 years to 1970, and forward 80 years to 2100, giving you full flexibility to see what can happen and when.



## How customers use EarthScan



### Diagnose & disclose

Identify assets at risk, prioritize decisions, quantify exposure and meet disclosure requirements.



### Stakeholder engagement

Share insights and ratings with key stakeholders - internally, (e.g. Board, other depts), and externally (e.g. suppliers, funders).



### Benchmarking

Compare and benchmark risk at multiple levels including geography, industry and competitors.



### Risk management

Scenario analysis, design and prioritise risk mitigation measures, disaster preparedness and continuity planning.



### Operational resilience

Inform adaptation and mitigation measures, including asset retirement, (re)location, retrofit and replacement.



### Investment decisions

Price climate risk for different financial instruments and asset classes, optimize portfolios and inform M&A decisions.



### Supply Chain management

Identify and mitigate critical risks in supply, logistics, and resource availability to minimize business disruption.



### New opportunities

Innovate new products, access new markets and identify growth opportunities.



EarthScan™

## About Mitiga Solutions

Founded in 2018, Mitiga Solutions provides physics-based modelling solutions that use artificial intelligence and high-performance computing to improve business resilience to climate-related risks. We support insurance, reinsurance, real estate, financial institutions and government clients in assessing their climate risk exposure with our Risk Modelling and EarthScan products. Mitiga is headquartered in Barcelona, Spain and backed by Kibo Ventures, Microsoft Climate Innovation Fund, Nationwide Ventures, Creas and Faber.

Contact [olivia.beagley@mitigasolutions.com](mailto:olivia.beagley@mitigasolutions.com) for a demo of EarthScan's capabilities.

