

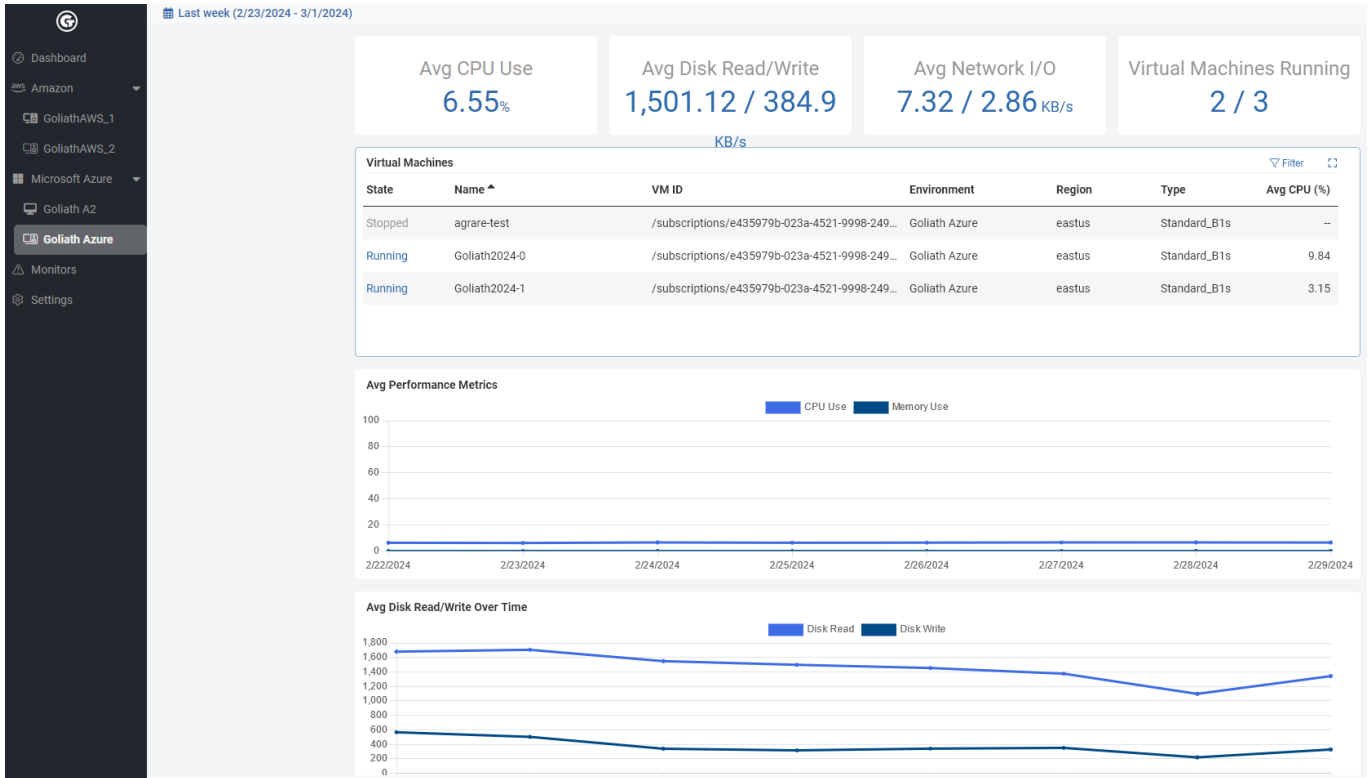
Independent Technical Review:

GOLIATH FOR MICROSOFT AZURE & AMAZON (AWS) MONITORING

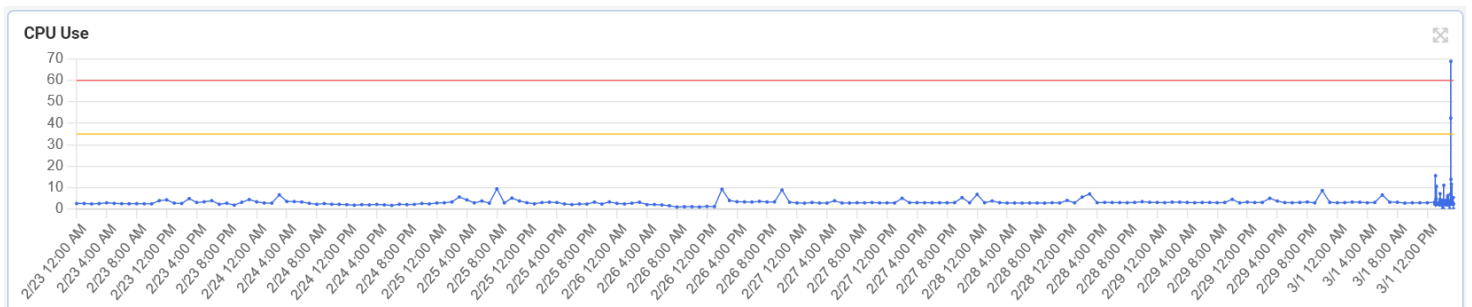
“Goliath provides a single pane of glass for viewing on-premises infrastructure and cloud deployments. This simplifies managing hybrid IT environments and helps facilitate the move to Azure or AWS WS” – Alan Pichette, CCA-V, CCA-N, CCP-M, Systems Solution Architect at En Pointe Technologies

Walk in the Clouds with Confidence

Goliath Technologies is a highly recommended monitoring and troubleshooting tool in the Citrix, VMware server, and desktop virtualization communities. It also supports monitoring in Azure and AWS environments. Businesses considering moving to the cloud or have infrastructure in Azure or Amazon AWS can get deeper insight into their cloud solution and virtualization infrastructure all from one single pane of glass.



I have migrated many of my clients into Azure and AWS. The first thing on my mind is how can I make the most out of this big investment? How can I get the most horsepower from my servers without breaking the bank? To achieve this, you will need smart insight and monitoring into your cloud solution. We all have spikes in our server utilization. Maybe it's a boot storm at 9 AM on a Monday morning, maybe it's month end and there's a high demand for storage and data. Regardless, an IT manager's nightmare would be having his cloud project go down after a huge investment was made into migrating applications and data to the cloud. Just the opposite can happen as well. When there is room to under size a new solution you



Goliath's technology monitors Azure and AWS resources in real-time to make certain you are not over or under provisioning resources. In addition, they don't look at Azure or AWS resources alone. They correlate these metrics with on-premises workloads and end user experience. This just simplifies the job of monitoring and managing hybrid workloads.

Goliath has an out of the box solution that will give you real-time alerts to your mobile device on all your Azure Virtual Machines or AWS EC2 instances. Get insight on performance, app crashes and resource consumption so you can react to changes in the cloud environment or performance issues. There is no need to download an app and try to read large graphs on a small screen. You can get text message alerts informing you if anything is going wrong with your environment. Although you can set the thresholds for this tool, Goliath has already pre-configured all the alerts with best practices from the vendors.

Monitor Alerts ✓ Acknowledge Filter ↻									
<input type="checkbox"/> Date ▾	Severity	Title	Type	Username	WorkSpace ID	Region	Threshold	Metric	
<input type="checkbox"/> 11/16/2021 01:35 PM	Warning	EC2 Instance CPU Use	AWS	TR	i-084e9be0e72ad...	us-east-1	5%	5.75%	
<input type="checkbox"/> 11/16/2021 01:30 PM	Warning	AVD CPU Use	AVD	TR	avd-idudnd44	us-east-1	90 %	95 %	
<input type="checkbox"/> 11/09/2021 12:19 PM	Warning	WorkSpaces Latency	AWS	john.k	ws-7t8jqwn59	us-east-1	75 ms	79 ms	
<input type="checkbox"/> 11/09/2021 11:54 AM	Critical	WorkSpaces Latency	AWS	R.Y	ws-7t8jqwn59	us-east-1	90 ms	254 ms	
<input type="checkbox"/> 11/09/2021 11:49 AM	Critical	WorkSpaces Latency	AWS	Jessica.F	ws-7t8jqwn59	us-east-1	90 ms	151 ms	
<input type="checkbox"/> 11/09/2021 11:34 AM	Critical	Google Cloud CPU Use	Google	william.f	gc-98373yd	us-east-1	90 %	95 %	
<input type="checkbox"/> 11/09/2021 04:59 AM	Critical	Azure VM Latency	Azure ...	bill.h	az-98765	us-east-1	90 ms	104 ms	
<input type="checkbox"/> 11/08/2021 08:49 PM	Critical	WorkSpaces Latency	AWS	ted.rainey	ws-7t8iqwn59	us-east-1	90 ms	96 ms	

Goliath's technology monitors Azure and AWS resources in real-time to make certain you are not over or under provisioning resources. In addition, they don't look at Azure or AWS resources alone. They correlate these metrics with on-premises workloads and end user experience. This just simplifies the job of monitoring and managing hybrid workloads.

Goliath has an out of the box solution that will give you real-time alerts to your mobile device on all your Azure Virtual Machines or AWS EC2 instances. Get insight on performance, app crashes and resource consumption so you can react to changes in the cloud environment or performance issues. There is no need to download an app and try to read large graphs on a small screen. You can get text message alerts informing you if anything is going wrong with your environment. Although you can set the thresholds for this tool, Goliath has already pre-configured all the alerts with best practices from the vendors.