



Introducing Astral EDM

Energy Data Management Solution

Harness the power of data to drive value and unlock insights, delivering cost savings and helping to achieve net zero. Leverage our next-generation capability for ingesting, storing, analysing, huge amounts of energy data and then deploy AI to drive insights..

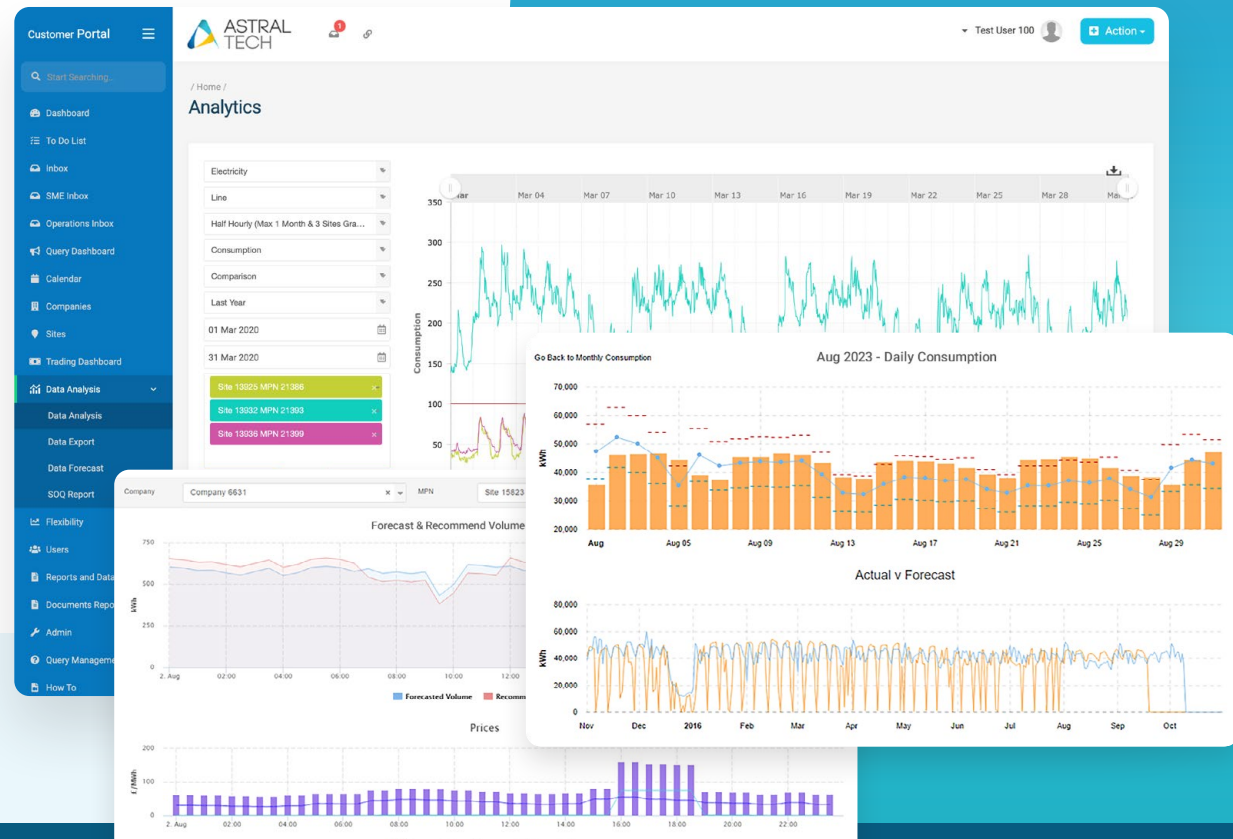
Market Overview

As we move towards energy markets that are 'smart' enabled the requirements on data storage and integration will continue to grow exponentially.

As organisations face up to achieving net zero and ESG targets, gathering, storing and understanding their energy use becomes a priority. Multiple data sources makes this extremely difficult and costly - Astral Tech have a market leading solution.

Astral EDM comprises:

- ✔ Cutting-edge technologies and sophisticated analytical tools.
- ✔ Leverage AI and predictive modelling to drive valuable insights.
- ✔ Drive down energy consumption with highly customisable alerts.
- ✔ Analyse and compare actuals, forecast, estimated, and predicted data.
- ✔ Suitable for electricity generation and consumption, gas, and water alike.



info@astraltech.energy
www.astraltech.energy











Astral EDM

Why Astral Tech?

- We're already used by 23% of UK C&I market and serving clients across 40 states in the US.
- Our pre-built technology is Multi Lingual, multi-currency and features localised terminology.
- Named a Major Player in IDC MarketScape: Worldwide Digital Customer Engagement Solutions for Utilities Vendor Assessment.

Key Features

-  Ingest interval data
-  Store Actuals, Estimates, Forecast
-  Consumption Analysis and Alerting
-  Flexible API for Data extraction
-  Next-gen aggregation capability
-  Carbon Emission conversions
-  Advanced AI Data Insights
-  Benchmarking and Alerts

Our Heritage and Capability

- ✓ Our EDM is already consuming interval energy data across 40 US states and for 23% of the UK's C&I market. Running 24/7 365 days a year.
- ✓ We're ingesting Data from 15 different sources from 5 minutes to hourly granularity. Our latest count shows a total 400 TWh energy data stored in half hourly granularity.



Want to learn more?

Get in touch: info@astraltech.energy
or visit: www.astraltech.energy/edm

