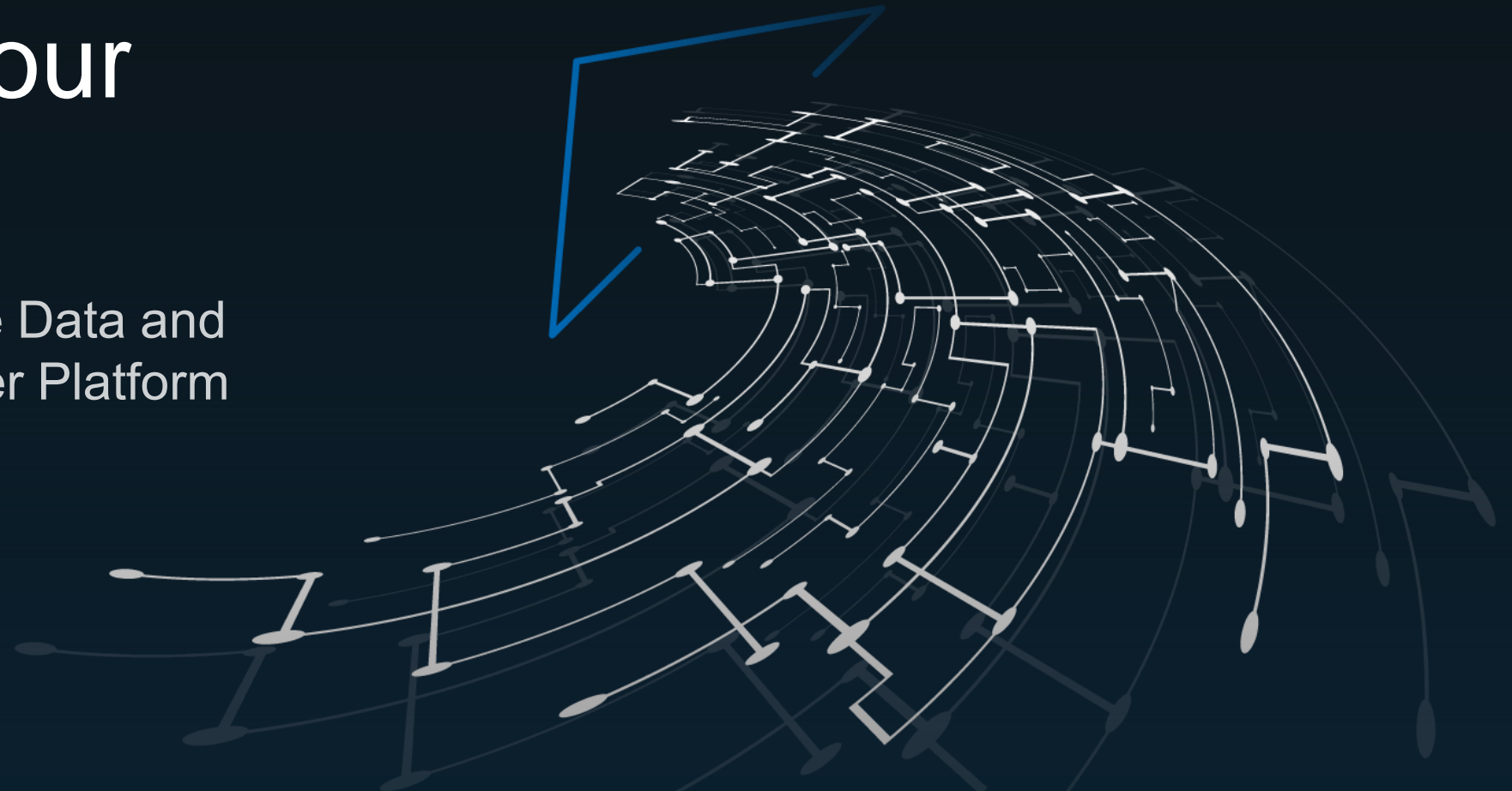


# Unlocking the value of your **SAP data**

with Microsoft Azure Data and  
Analytics, and Power Platform

[www.hcltech.com](http://www.hcltech.com)



# Unlock SAP data with Power Platform to extend SAP capabilities

Modernize and accelerate your analytics, automate, and simplify business processes, interact more intelligently with your data, and build conversational interfaces — all within your existing SAP platform.

## Recognize the challenges that are holding your enterprise back



Siloed data, limiting real time performance measurement



Certified datacenters are expensive and over-provisioned



Lack of connected insights across the enterprise; no BI integration



Technical debt makes it hard to innovate and deliver business results quickly



Traditional ERP systems lacking agility, as well as legacy system maintenance



Security and compliance are expensive, with time-consuming “Shadow IT” governance

# Harness the value of SAP data to enhance your decision making and competitive advantage with - Azure and Power Platform



+



Microsoft Cloud

=

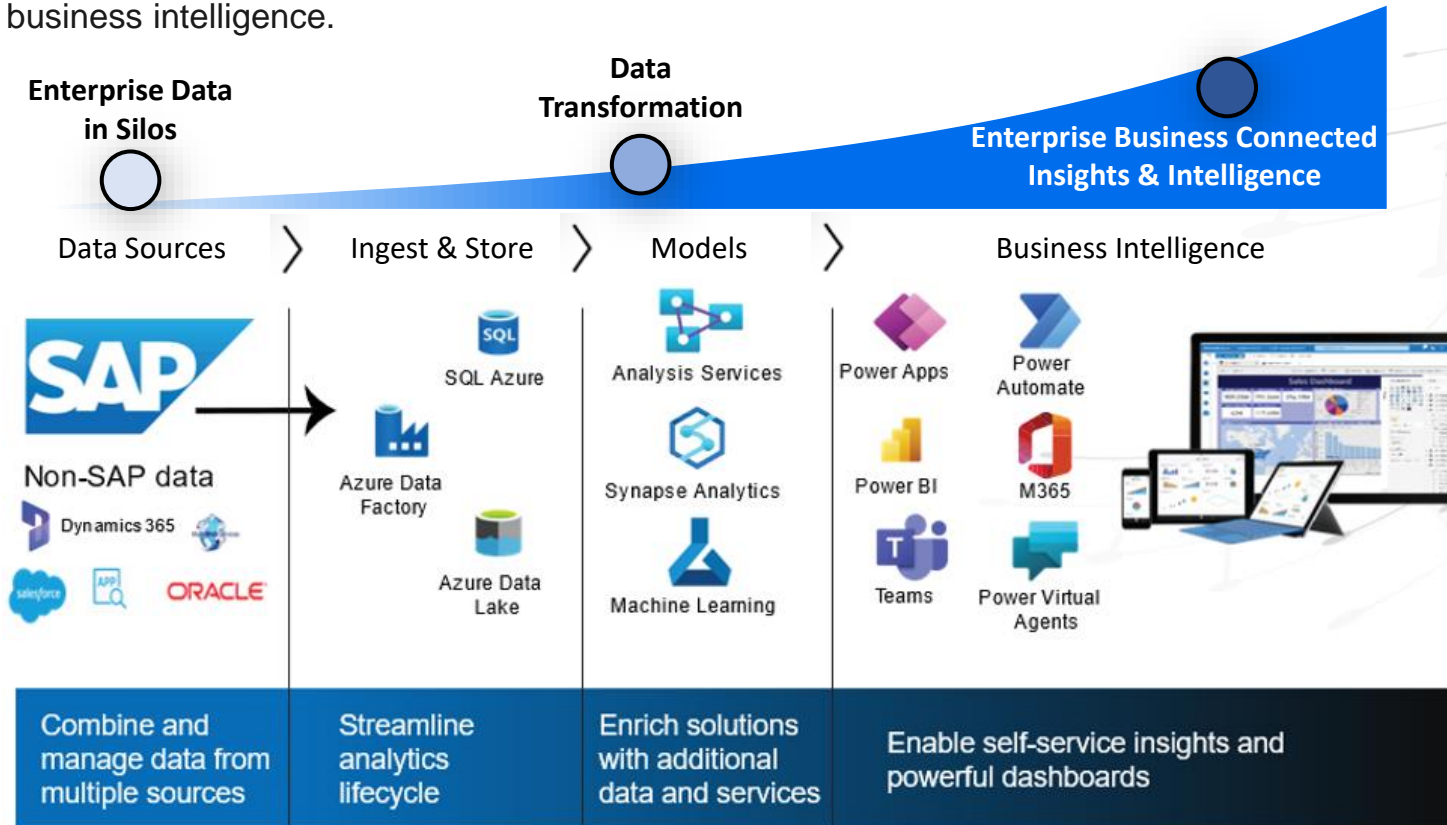


Enterprise Business Connected  
Insights and Intelligence

# Transform SAP data into actionable intelligence

Whether you have SAP data/Non-SAP data or any unstructured, semi-structured, or structured data, bring it into the Azure Data Lake coupled with Synapse Analytics, including automation with Power Platform.

Azure Synapse Analytics is a limitless analytics service that brings together data integration, enterprise data warehousing, and big data analytics. Query for 'data on your terms' - at scale. Azure Synapse brings together a unified experience to ingest, explore, prepare, manage, and serve data for immediate business intelligence.



Gain insights from all your data: across data warehouses, data lakes, and big data analytics systems.

Query both relational and non relational data at scale, and easily optimize the performance of all queries with intelligent workload management, workload isolation, and limitless concurrency across SAP and other data stores and sources.



Agility and automation to respond to changing business needs



Helps build new applications with velocity



Gain real-time and predictive insights from unified SAP/non-SAP data

SAP HANA + Azure services create a platform for continuous innovation



Cloud automation, scale, and OPEX flexibility provide cost efficiency

Ability to continuously innovate



World-class security, compliance, and business continuity

Lowest support and maintenance costs



Nurture business resources into citizen developers with low-code/no-code

Mobile first and Cloud first approach for building business applications



Agile IT continuously and effortlessly improves software, with each change in business scenario

Empower professional developers with new skills



# Why Azure with Power Platform?

## Modernize legacy apps. in the cloud by:



Eliminating security risks

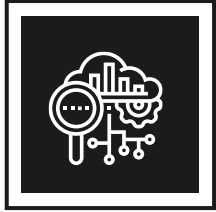


Enhancing automation and integration with a wider IT estate



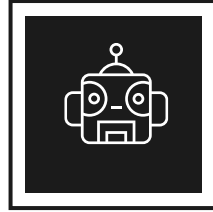
Improving user experience

# HCL Power Platform offerings



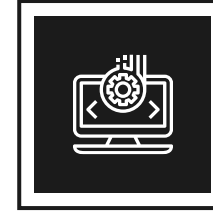
## Power Platform CoE

Governance, guardrails, CoE setup



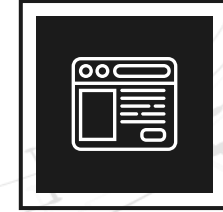
## Legacy application modernization

Apps., flows, reports, and bots



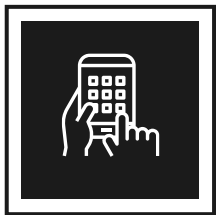
## App. Maker enablement

Training citizen developers, community portal, Application onboarding, Maker onboarding



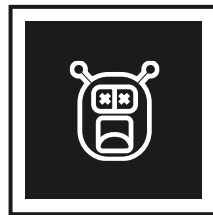
## Power Platform Dev. Factory

Build apps., flows, reports, bots - at scale



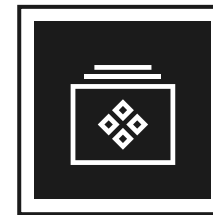
## Power Platform Support-as-a-Service

Support ever-evolving platform, and apps. built by everyone



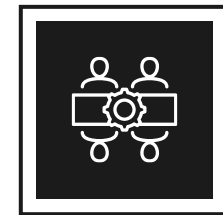
## Build complex use cases

RPA, AI, PVA, MI, Azure Bot framework



## Bookable activities

AIAD, hackathons, admin. bootcamps, Floor Walker Fusion development/co-creation



## Microsoft funded activities

Running catalyst workshops, POC in a Week, Pilot in a Month, customized hacks with business

# Why HCL

HCL experts implement Microsoft's trusted and integrated cloud capabilities, to empower your teams to deliver consistently.

## Strategy, commitment, and alignment

- Strategically partner with Microsoft to accelerate our customer's Digital Transformation Journey.
- Actively collaborate with Microsoft on engagement plans and execute strategic activities.
- Build Microsoft-driven Cloud offerings, capabilities, and capacity to provide the highest-level of customer satisfaction.



Three award cards, each featuring a trophy icon with five stars above it. The cards are arranged horizontally. The first card is for the Microsoft Global Healthcare and Life Sciences Partner of the Year Award. The second card is for the Microsoft US Partner of the Year Award for Power Apps. The third card is for the Microsoft UK Partner of the Year Award.

**2022 WINNER**  
Microsoft Global Healthcare and Life Sciences Partner of the Year Award

**2022 WINNER**  
Microsoft US Partner of the Year Award for Power Apps

**2022 WINNER**  
Microsoft UK Partner of the Year Award

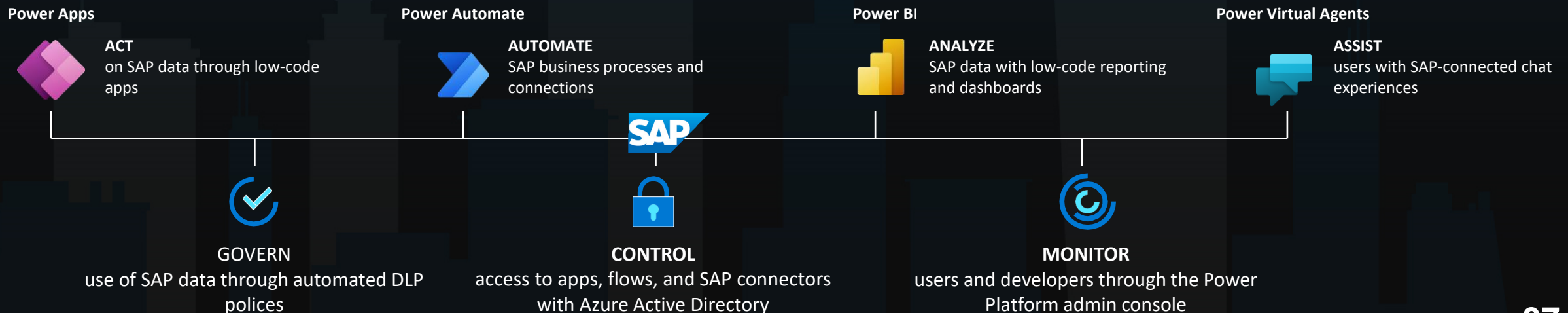


Two award cards, each featuring a trophy icon with five stars above it. The cards are arranged horizontally. The first card is for the Microsoft Internet of Things Partner of the Year Award. The second card is for the Microsoft Security Excellence Partner of the Year Award.

**2022 FINALIST**  
Microsoft Internet of Things Partner of the Year Award

**2022 FINALIST**  
Microsoft Security Excellence Partner of the Year Award

# HCL competency spans the SAP and Microsoft Platform



# Why partner with HCL for end-to-end **SAP, Azure, and Power Platform services**

The SAP logo is displayed in white text on a blue background, positioned on the left side of the slide.

## **Widest scale and better regional coverage**

192 GB to 12 TB SAP HANA-certified VM's available worldwide, 50+ regions (more than any other public cloud)

## **Enterprise-proven Azure platform**

Advantage of Azure services such as IoT, Azure Data Lake, Azure ML, and Power BI for business insight

## **Security and compliance**

- 90+ compliance offerings, including tools for GDPR
- Best in class security offerings, including: Azure security center, Azure Sentinel, and Azure AD

## **Scalability**

Scaling out to 60 TB RAM with TDI and up to 120 TB with TDIv5

## **Largest SAP HANA workloads**

Largest SAP HANA workloads - with purpose-build bare metal up to 24 TB for scale up- with Intel Optane persistent memory instances of up to: 9 TB



# Why partner with HCL for end-to-end **SAP, Azure, and Power Platform services**



Azure

## **Azure Gold Certified Partner**

- For cloud platform, productivity, and analytics
- Certified Cloud Service Provider

## **Cloud competency and scale**

- Cloud innovation labs/Center of Excellence (CoE)
- 120k+ Azure-managed virtual machines

## **Integrated end-to-end offerings**

- Azure Professional Services: Consulting
- Managed Migration and 100-in-100 fixed price
- Managed: ElasticOps and FinOps for Azure

## **SaaS COE**

- Life cycle – Consulting to Implementation
- Strong SaaS practice
- 250+ customers

## **Cloud migration and transformation**

- 400 PB managed storage
- 60k databases



Power  
Platform

## **Expertise**

Every consultant is aligned to a CoE to enhance their expertise across industry and workloads, as well as foster collaboration

## **Speed-to-value**

HCL can solve critical business issues quickly, and with minimal risk with prebuilt industry products and accelerators - built on Microsoft Business Applications

## **Safe pair of hands**

HCL has over 1,220 active customers, 32 percent of whom are enrolled in our reference program. We also have the largest dedicated Microsoft support desk

## **Microsoft partnership**

HCL is the largest Microsoft Dynamics 365 partner world-wide

## **End-to-end services**

HCL—with over 2,000 implementations—is the only partner that delivers the full life cycle of cloud services: Professional Services, Advisory, Transformation, Integration, and Management

# Why partner with HCL for end-to-end **SAP, Azure, and Power Platform services**



## Sentinel Security

### Microsoft Sentinel SAP Enterprise Threat Monitoring Solution

- Monitor SAP Connector for attack detection, threat visibility, proactive hunting, and threat response
- Detect previously undetected threats
- Investigate threats using AI and search for suspicious activities at scale

### Built-in Orchestration and Operations

- Built-in orchestration for rapid response to incidents
- Managed: ElasticOps and FinOps for Azure



## Data Platform, Analytics, AI, ML & IoT

### Data Platform and Business Analytics on SAP Data simplified with Azure Data Services

- Permit one unified platform with Azure Synapse by blending Big Data Analytics, Data Lake, Data Warehousing, and Data Integration
- Consolidate all Enterprise Data into a Azure to achieve data democratization.

### Big Data and SAP linked services

- Enable Big Data and Modern Algorithms to perform Advanced Analytics on SAP Data
- Seamlessly connect with both Azure Data and SAP for Enterprise-wide operational reporting
- Use of Machine Learning techniques on SAP ERP data to deliver Intelligent Enterprise
- Streamline data ingested via SAP linked services into Azure Data Lake Storage and also to the Mapping Data flows

### IoT streaming data services

- Unite supply chain data with IoT streaming data using Azure streaming and analytics capabilities

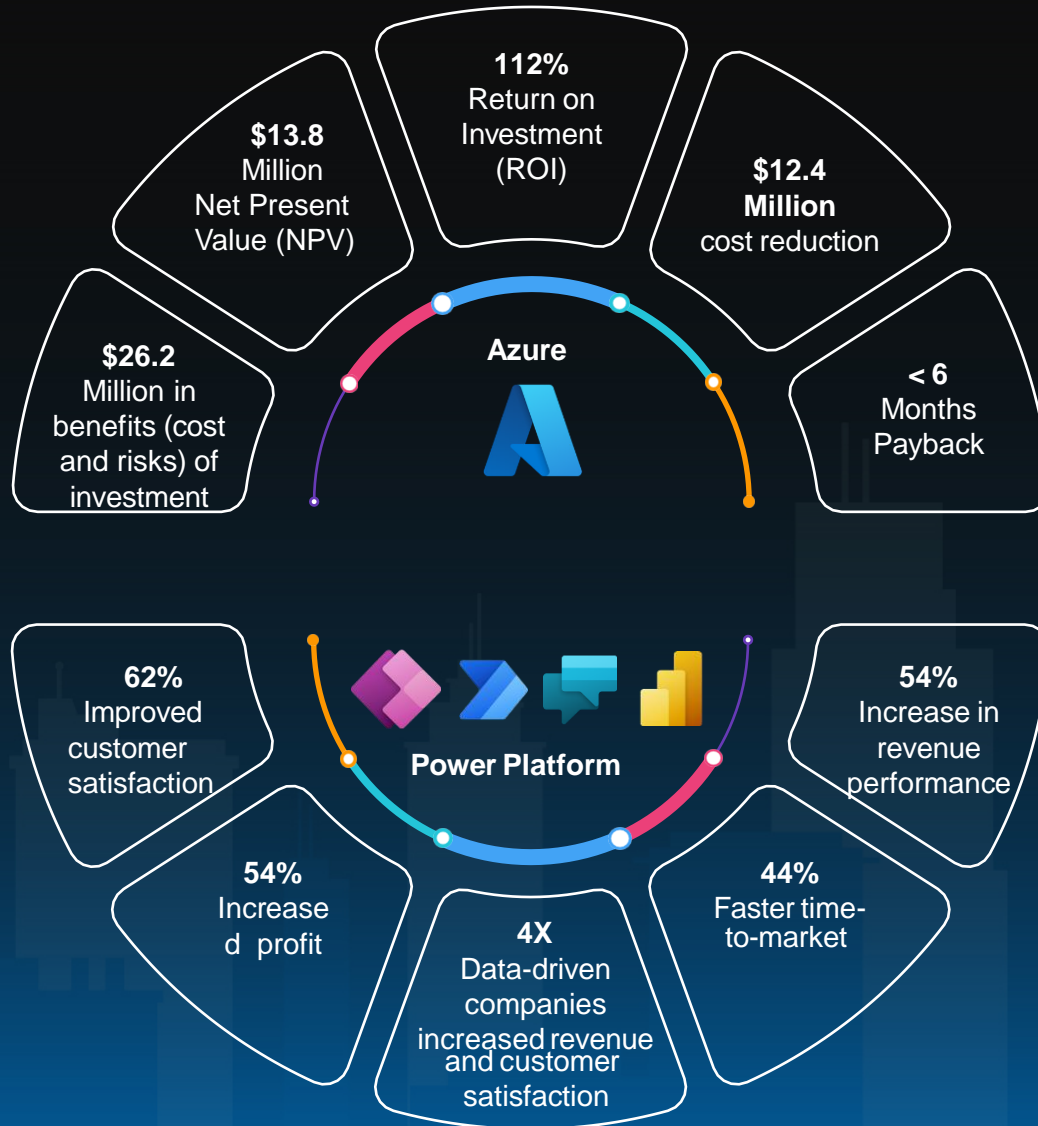
### On Demand Storage, DevOps services and CoE Advisory

- Scale and Pay-on-Demand for storage and compute
- Reduce overall cost of ownership and improve DevOps/DataOps through Native Cloud offerings for Data Storage, Integration and Analysis.
- CoE Advisory to convert existing Data Models into corresponding Azure capabilities

### AI and ML Analytics Solutions

- Advanced Analytics (prescriptive and predictive analytics) with Azure AI and ML with seamless Databricks integration

# Key outcomes

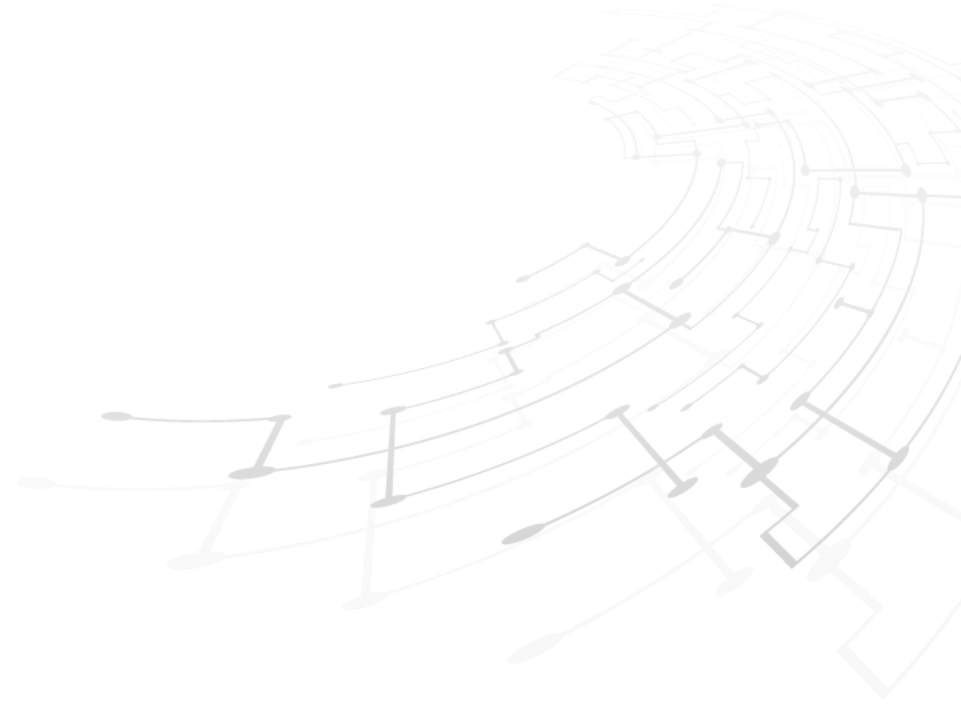


Source:

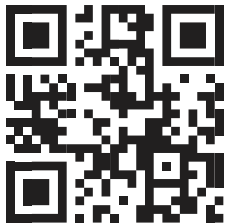
*Forrester TEI study, 2021  
How to lead a data-driven digital transformation by Harvard Business Review*

Connect with our team

Contact us: [hclmicrosoftbu@hcl.com](mailto:hclmicrosoftbu@hcl.com)



HCL Technologies (HCL) empowers global enterprises with technology for the next decade today. HCL's Mode 1-2-3 strategy, through its deep-domain industry expertise, customer-centricity and entrepreneurial culture of ideapreneurship™ enables businesses to transform into next-gen enterprises.



[www.hcltech.com](http://www.hcltech.com)

HCL offers its services and products through three lines of business - IT and Business Services (ITBS), Engineering and R&D Services (ERS), and Products & Platforms (P&P). ITBS enables global enterprises to transform their businesses through offerings in areas of Applications, Infrastructure, Digital Process Operations, and next generation digital transformation solutions. ERS offers engineering services and solutions in all aspects of product development and platform engineering while under P&P. HCL provides modernized software products to global clients for their technology and industry specific requirements. Through its cutting-edge co-innovation labs, global delivery capabilities, and broad global network, HCL delivers holistic services in various industry verticals, categorized under Financial Services, Manufacturing, Technology & Services, Telecom & Media, Retail & CPG, Life Sciences, and Healthcare and Public Services.

As a leading global technology company, HCL takes pride in its diversity, social responsibility, sustainability, and education initiatives. As of 12 months ending on December 31, 2021, HCL has a consolidated revenue of US

\$ 11.18 billion and its 197,777 ideapreneurs operate out of 52 countries. For more information, visit [www.hcltech.com](http://www.hcltech.com)