







Blueprint to Brilliance:

Crafting Your Digital Smart Space with Copilot for M365



In the dynamic world of business, where efficiency and productivity are the cornerstones of success, Copilot for Microsoft 365 stands as a beacon of innovation. It's like the central hub of a smart home, designed to streamline your Microsoft 365 interface, making it more intuitive and responsive to your organization's rhythm.

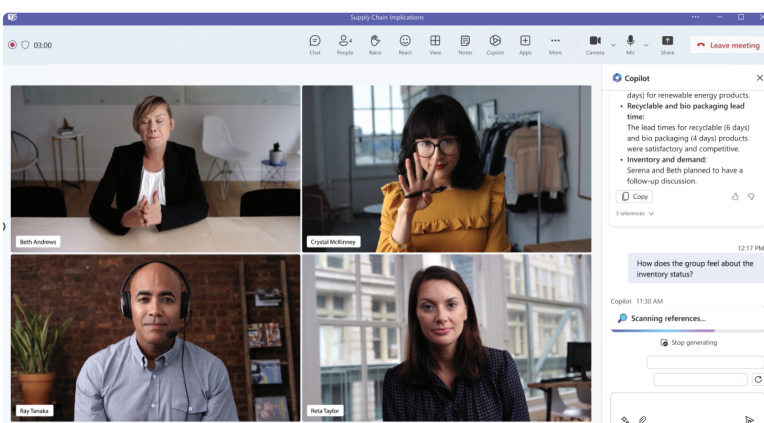
Key Features and Benefits:

-  **Intelligent Automation**
Imagine your digital workspace as a smart home where Copilot is the system that automates your lights, temperature, and security. It takes care of routine tasks like email sorting, meeting setups, and file arrangements, freeing your team to focus on the bigger picture.
-  **Proactive Insights**
Copilot acts as your personal analytics center, studying your work patterns to offer insights and suggestions, much like a smart home learns your preferences to enhance your living experience.
-  **Enhanced Collaboration**
Just as a smart home seamlessly connects various devices, Copilot integrates with Microsoft 365 apps to foster a cohesive and efficient collaborative environment.
-  **Simplified User Experience**
With an interface as user-friendly as a smart thermostat, Copilot ensures that its advanced features are accessible to everyone, making your digital workspace a place where productivity feels at home.

Implementation and Preparation

To fully embrace the smart capabilities of Copilot for Microsoft 365, it's essential to prepare your organization's digital framework, just as you would ensure the structural integrity of a smart home.

- Technical Readiness**
Inspect the 'electrical system' of your IT infrastructure to confirm it's primed for the Copilot 'smart hub'. This may involve system upgrades or confirming that all users have the keys to the necessary Microsoft 365 apps.
- Information Architecture**
Design the 'floor plan' of your digital space. Organize and structure your data and documents in a way that Copilot can easily navigate and manage, ensuring that information flows smoothly through your organization's new smart digital habitat.
- Security and Governance**
Just as a smart home is equipped with advanced security systems to protect its inhabitants, integrating Copilot into your digital workspace includes fortifying your environment with robust security measures and governance policies. This ensures that while Copilot enhances your productivity, it also upholds the highest standards of data protection and regulatory compliance, keeping your organization's digital assets safe and well-managed.
- Adoption and Change Management**
Transitioning to a smart home is about more than just new tech; it's about adapting to a new lifestyle. Similarly, adopting Copilot is about guiding your team through the change with thorough training and supportive change management.
- Continuous Support**
Establish a 'home security system' to assist users with navigating Copilot's new features, ensuring a smooth transition and ongoing assistance.



Embracing Copilot for Microsoft 365 is like upgrading to a smart home for your digital workspace. It's about automating the mundane, gaining valuable insights, and enhancing collaboration to empower your team to focus on what truly matters. Prepare your organization for this digital evolution, and watch as your workflow becomes smarter, driving superior results and a more competitive edge in the business world.