

Power App Capability Overview

Microsoft Business Application
Practice

Fastest-growing Indian IT firm

2023 Brand Finance Global 500 & IT Services 25 report

220+ leadership recognitions

By analysts

Regional Top Employer certifications in 25 countries under the

Top Employer 2023 program

Corporate Citizen of the year award 2021

By The Economic Times for championing social change and good governance

Featured amongst Most Sustainable Companies By Businessworld magazine

HCLTech at a glance

222 K

Ideapreneurs

\$12.3Bn

Revenue

167

Nationalities

60

Countries

Focus areas



Digital



Engineering



Cloud



Software

Sustainability

Act. Pact. Impact.

*as on Sept 30, 2022

HCLTech

Microsoft Business Applications Practice



Service



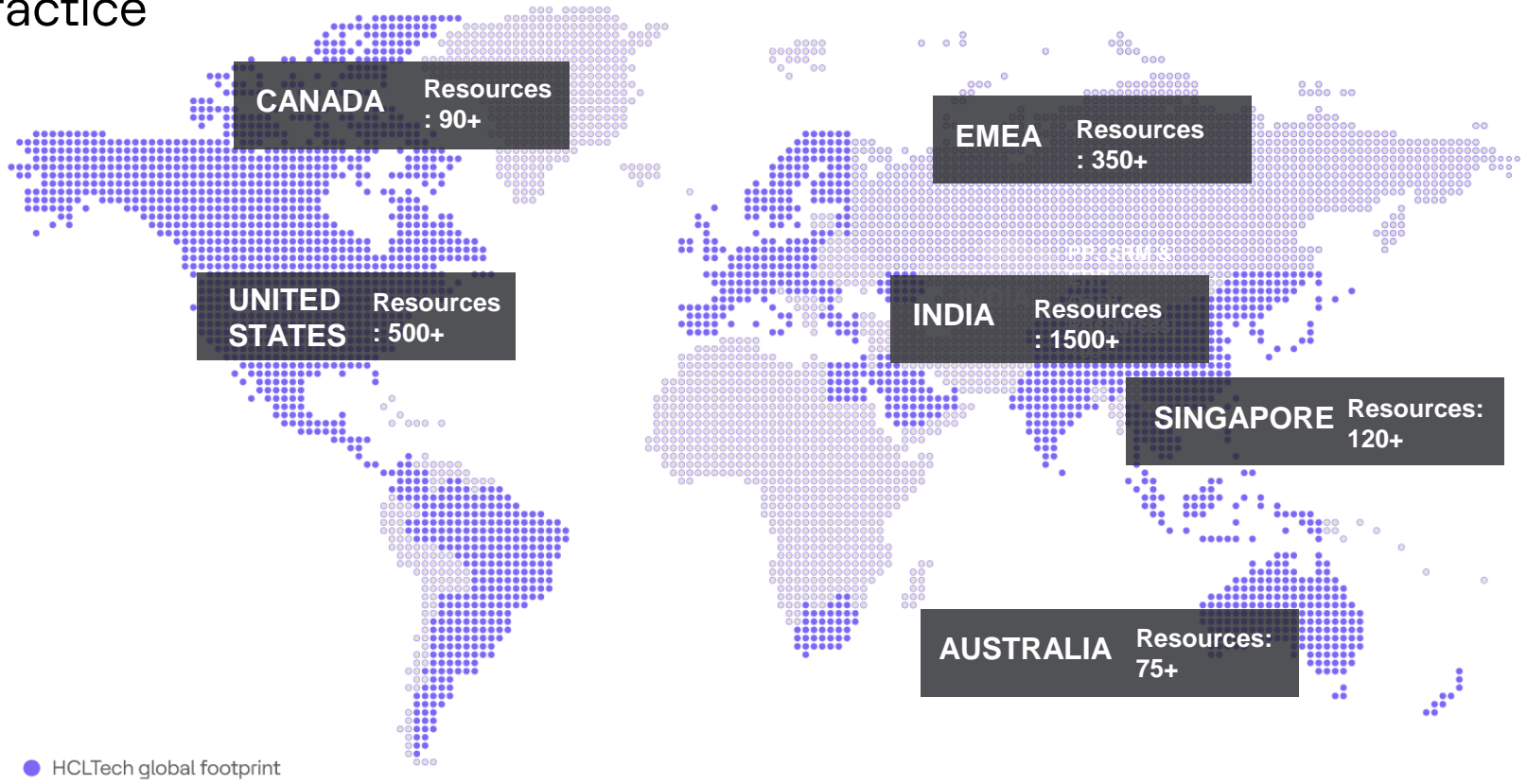
Support



Education



R&D



- #2 partner influencing Microsoft Business Apps license revenue
- Top three Strategic SIs for Microsoft, with 2,750+ delivery consultants
- Microsoft Partner of the Year over 35 times in last 10 years
- 2.4 Million+ Active Dynamics Users and over 1,200 companies using our IP
- Founded in 1993, acquired by HCLTech in 2015



- 2022 - Microsoft Partner of the year - United Kingdom
- 2022 - Microsoft Global Partner of the year - Finalist - IoT
- 2020 Biz Apps Technology Innovator of the Year
- 2019- 2020 Global Customer Service Partner of the Year
- 2019-2020 Global Financial Services Partner of the Year



HCLTech Power Platform Offerings



Power Platform COE

Governance, Guardrails, COE Setup



Power Platform Support as-a-Service

Support ever-evolving platform, and apps built by everyone



App Maker Enablement

Training Citizen Developers, Community Portal, App Onboarding, Maker Onboarding



Legacy App/Workflow Modernization

Apps, Flows, Reports, Bots



Bookable Activities

App-in-a-Day, Hackathons, Admin Bootcamps, Citizen Developer Bootcamp, Floor Walking, co-development



Power Platform Dev Factory

Build Apps, Flows, Reports, Bots at scale



Microsoft-HCLTech co-funded Activities

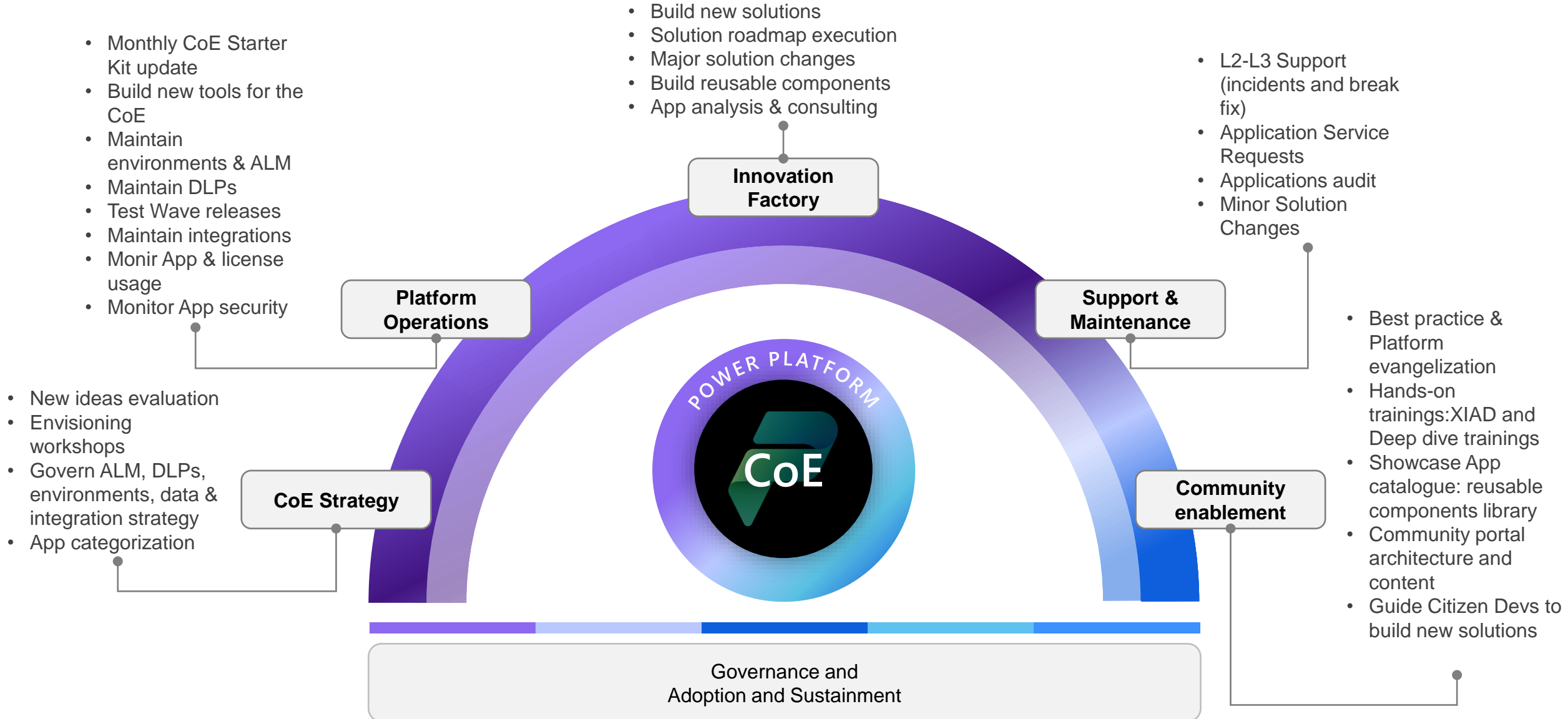
Running Catalyst Workshops, POC in a Week, Pilot in a Month. Customized Hacks with business



Build Complex Use Cases

RPA, AI, PVA, ML, Azure Bot Framework

Power Platform Centre of Excellence

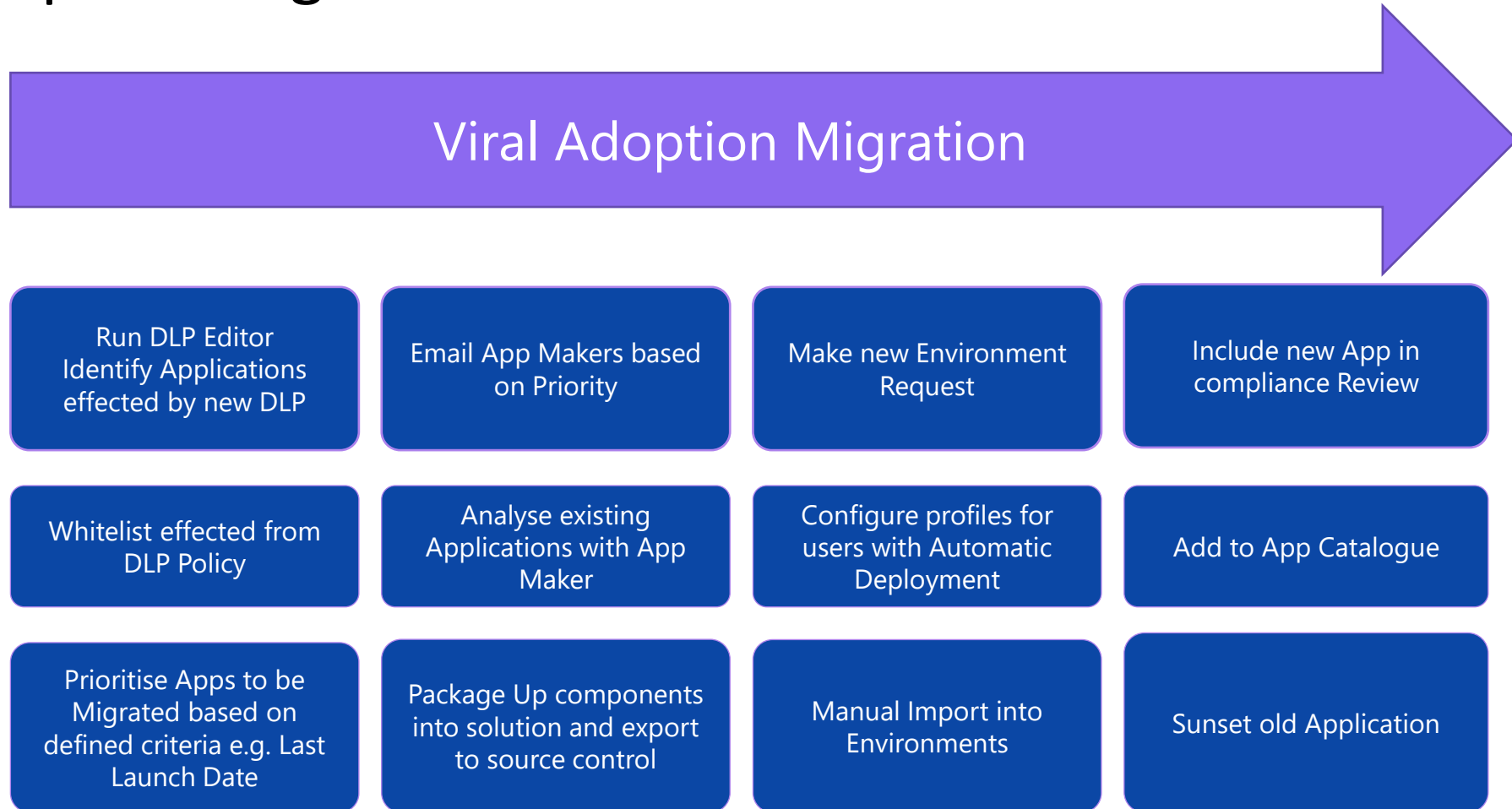


Power Platform Governance Implementation



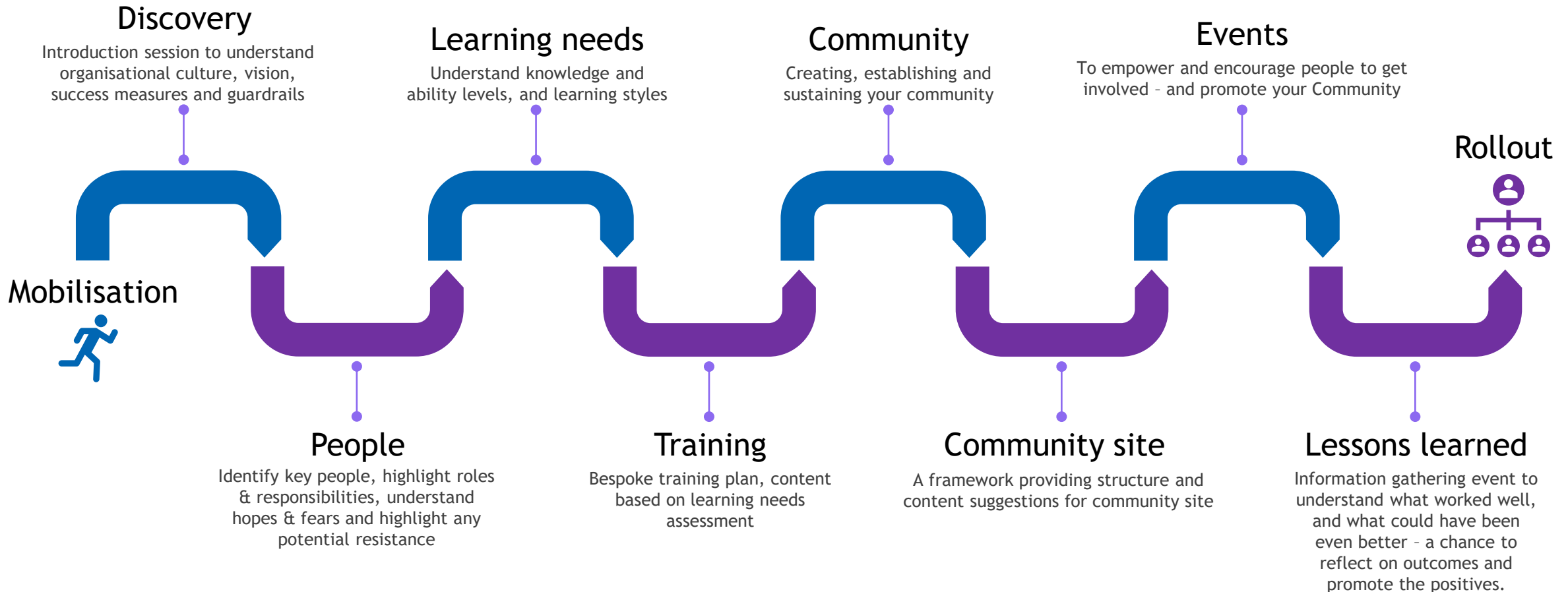
Stakeholders - Enterprise Arch Team, Risk & Compliance Team, Information Security Team, Global and Business Unit Product Owners, Microsoft Product Admins, Application Support Team

Viral Adoption Migration



Power Platform Adoption and Sustainment

To ensure success of your project and provide a rollout model that can be replicated (and adjusted as appropriate), we recommend these key steps to empower and enhance community activity. Throughout the project we will provide a model for gathering and analysing feedback.



Example Events



Targeted at Citizen Developers, and recommended to promote Power Platform and your Community.

EVENT	DESCRIPTION	ATTENDEES	SESSION DURATION
Power Hour	For those new to Power Platform to come and find out what Power Platform has to offer.	No limit to numbers New to Power Platform	1 hour
Drop-in sessions	For makers who need technical help with their apps and flows.	Up to 20 Basic to good knowledge	1 hour
Showcase events	Makers who want to showcase and share their ideas and experience.	Up to 20 Basic to good knowledge	1 hour
Ideation sessions	Ideas are fleshed out collaboratively using design thinking techniques, resulting in a one-page description of “The Big Idea” for each concept.	Up to 20 Any level	1-3 hours*
Hackathons	A mix of training, ideation and building to give an end-to-end experience of the platform.	Up to 20 Basic to good knowledge	9-15 hours*

*Depending on content/component being presented.

Assessment Approach and Questionnaire

Power App

1

Application Classification

- Technology grouping
- Process grouping
- Functional grouping

2

Criticality Assessment

- Usage Analysis from Tool
- Process priority
- IT team ranking
- Business team ranking

3

Complexity Assessment

- Tool data
- Workshop outcome
- Design analysis (Manual)
- Expert assessment

4

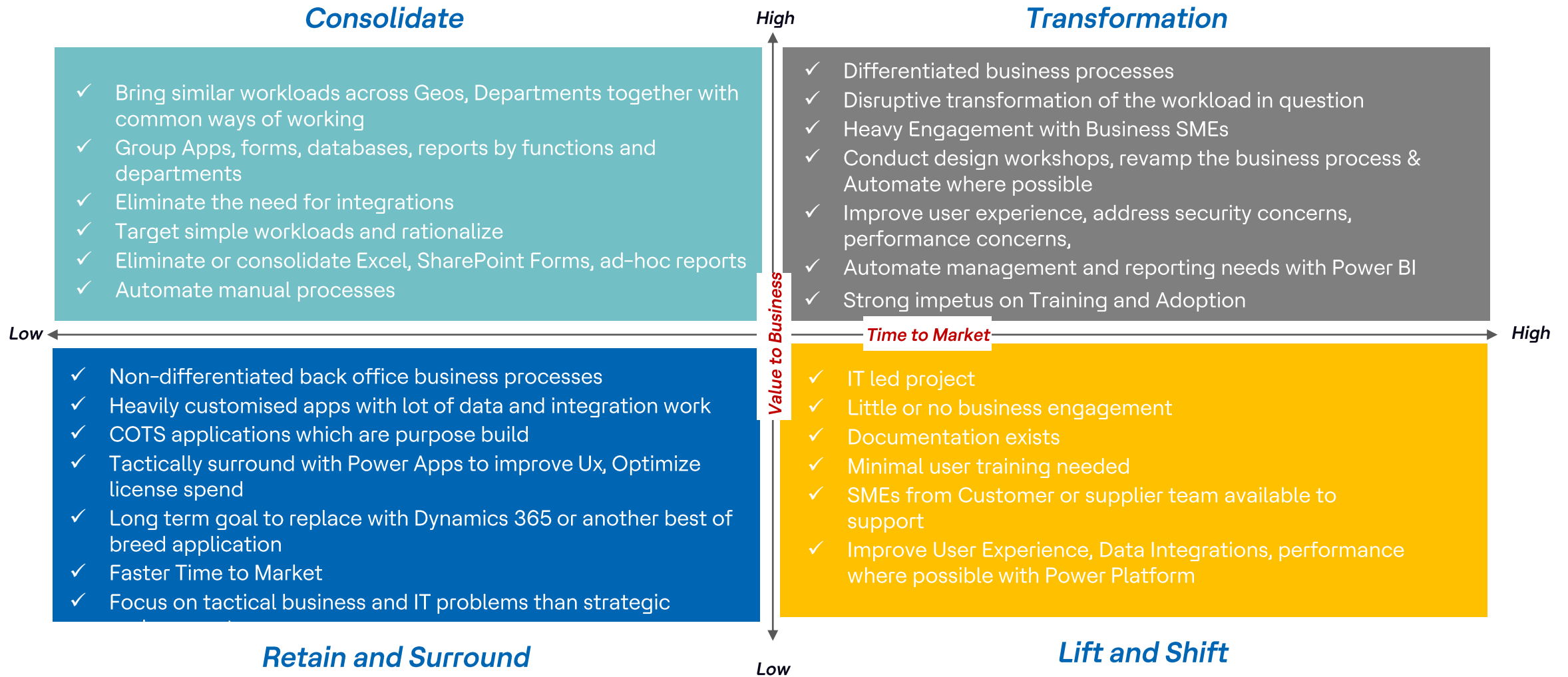
Assessment Report

- Classification by
 - To Decom
 - To Archive
 - To re-platform
- Roadmap for re-platform

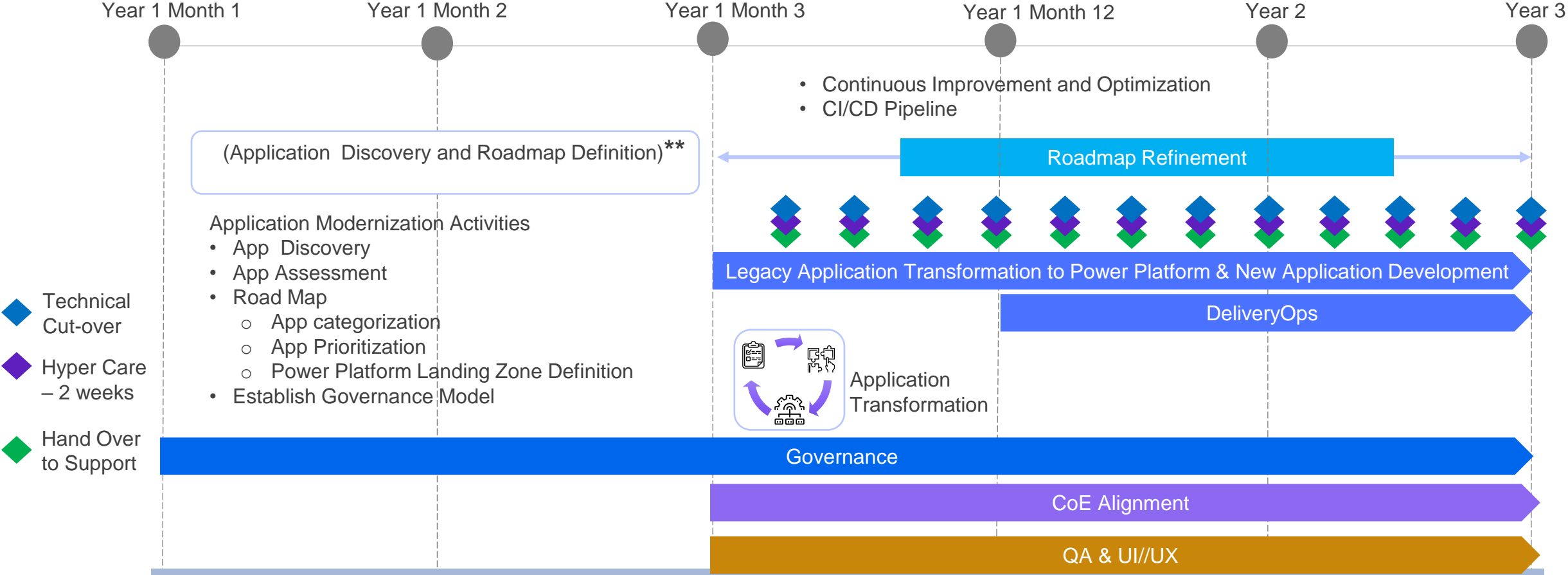


- **Application classification** will be based on
 - Application Title, Content type from Tool report
 - Discussion with Application owners
 - Responses to the questionnaires
- **Business criticality assessment** is done based on the tool data, questionnaire responses and inputs from workshop
- **Technical Complexity assessment** will be based on tool complexity ranking, high level design analysis, integration with other systems

Legacy App Treatment using HCL's Framework



Execution Approach



** HCL team will be performing the activity to application rationalization to define the roadmap. Any backlog for development or new application development that needs to be worked by the development team will be based on mutual agreement of both parties depending on bandwidth availability.