



# Accelerate Your Innovations in Healthcare

With CDW and Epic on Azure



# CDW is the **scale engine** and **ecosystem partner** that can amplify your **entire cloud experience**

**250k+**

Global Customers

**1200+**

Active Partners

**3000+**

Sales Professionals

**5500+**

Technical Professionals

**5000+**

Industry Certifications

**800+**

Engineers & Architects

# Digital Velocity & Microsoft Partnership Highlights

## Highlights

- 800+ Engineers,
- 120+ Microsoft Dedicated
- 360+ Microsoft Azure and
- Security Certifications
- Advanced Specializations:
  - Windows & SQL Server Migration
  - Modernization of Web Applications
  - Kubernetes
- Azure Expert MSP
- Azure Cognitive Services Powered Intelligent CX
- Microsoft AMMP and Solutions Assessment Funding Subsidies

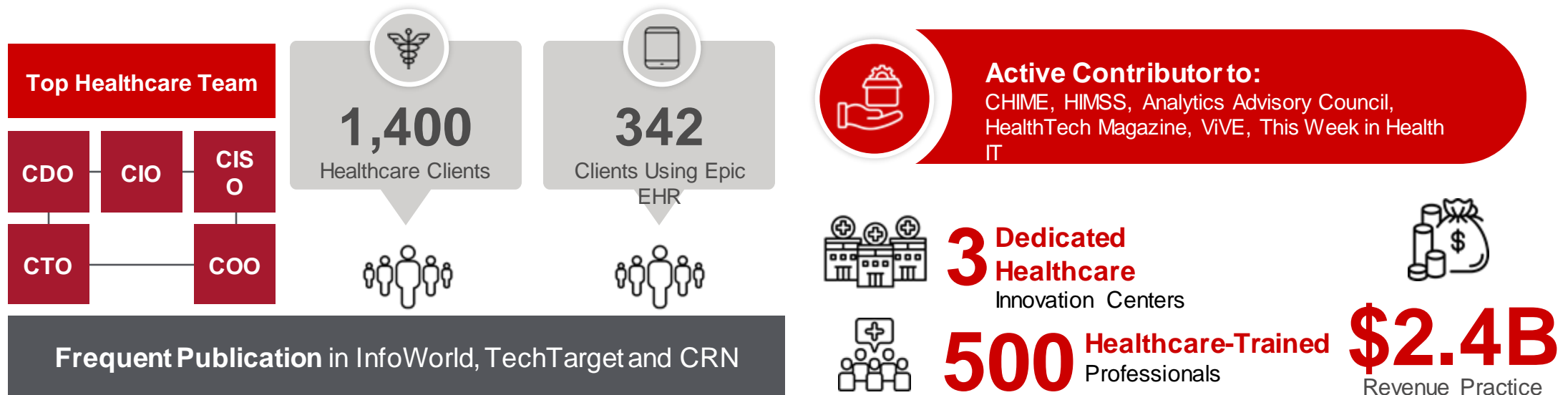
## Expertise

- Core Azure Infrastructure Deployment and Management
- On-Premise to Cloud Migration
- Hybrid Cloud
- Infrastructure Automation and IaC (Infrastructure-as-Code)
- Cloud Native Application Development
- Modernization of Legacy Applications
- Data Warehousing and Analytics
- Database Modernization & Migration
- Cloud Security & Governance
- Data Protection & Privacy
- AI and ML Solutions



# CDW Healthcare by the numbers

You have options when selecting electronic health record (EHR) systems, and even more when choosing a partner for implementation and optimization.

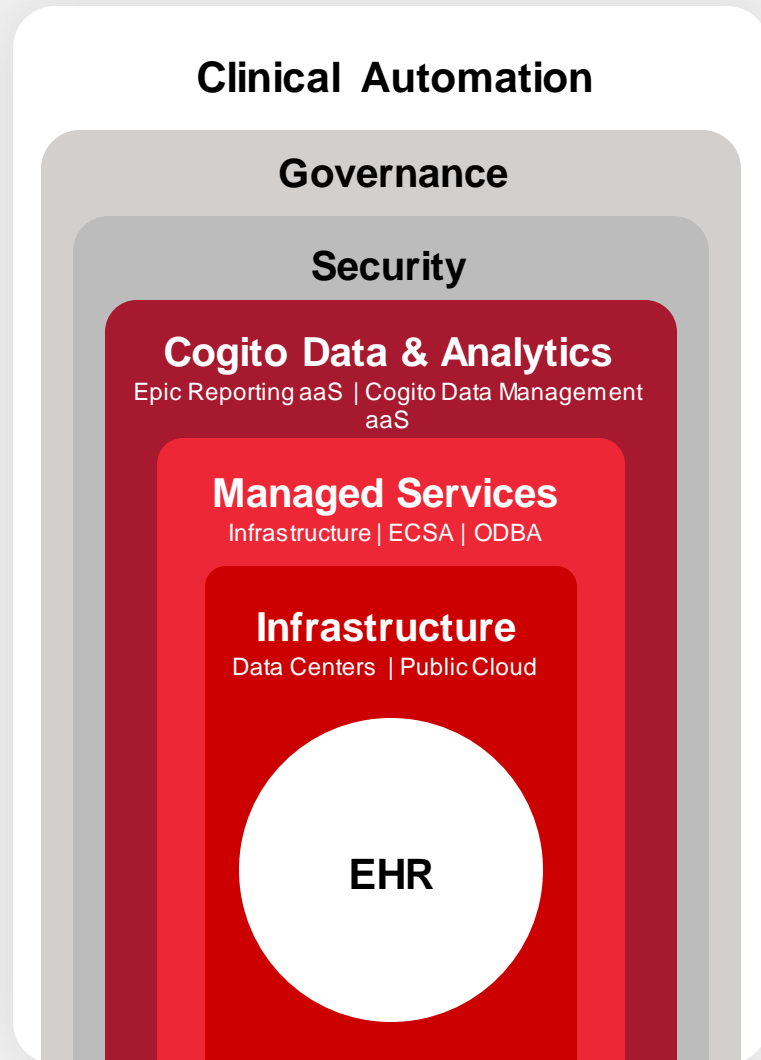


---

# We get epic ecosystem support

The CDW Healthcare team, comprising former healthcare executives with firsthand Epic® experience, brings an intimate understanding of the challenges and pain points related to all phases of Epic deployment. They can help maximize your Epic investment and optimize your total cost of ownership while creating organizational efficiencies and improving care outcomes and the satisfaction of clinicians and patients.





# CDW provides solutions across the entire Epic ecosystem

No matter which phase your organization is in, CDW has the experience and expertise to support the full gamut of the Epic ecosystem.

Since Epic contains highly sensitive information, the need for a strong infrastructure is vital. Whether your critical infrastructure resides in an on-premises data center or a colocation facility, CDW can provide Epic data center solutions for storage, compute, network, load balancers, and backup and recovery—in addition to analyzing, planning and deploying Epic workloads in the public cloud.

# Benefits of Running Epic on Azure



## Scalability

Azure provides a highly scalable cloud infrastructure that can accommodate varying workloads and user demands. Epic implementations in healthcare often experience fluctuating usage patterns, such as peak times during clinic hours. Azure's auto-scaling capabilities can automatically adjust computing resources to handle these spikes.



## High Availability

Azure offers a robust and reliable cloud platform with multiple data centers distributed globally. This redundancy minimizes the risk of downtime and ensures high availability of the Epic system. In a critical healthcare environment where constant access to patient data is vital, Azure's SLA-backed uptime guarantees help maintain continuous operations.



## Security & Compliance

Healthcare data must be protected and kept in compliance with industry regulations like HIPAA (Health Insurance Portability and Accountability Act) and GDPR (General Data Protection Regulation). Azure provides comprehensive security features, including data encryption at rest and in transit, identity and access management, threat detection, and compliance certifications. These measures help healthcare organizations meet strict security requirements for safeguarding sensitive patient information.



## Integration

Epic EHR systems often need to integrate with various other healthcare applications, such as patient portals, medical imaging systems, or billing software. Azure offers a wide range of integration tools and services, like Azure Logic Apps and API Management, making it easier to connect and exchange data between different systems securely.

# Benefits of Running Epic on Azure



## Cost Optimization

Azure's pay-as-you-go pricing model allows healthcare organizations to optimize their costs based on actual resource usage. This eliminates the need for upfront capital expenditures on hardware, reducing financial risks associated with infrastructure investments. Additionally, the auto-scaling capabilities mentioned earlier help in efficiently utilizing resources, further optimizing costs.



## Data Analytics & AI

Azure's cloud platform incorporates powerful data analytics and AI capabilities through services like Azure Machine Learning and Azure Data Lake Analytics. These tools can be leveraged to gain valuable insights from healthcare data, identify patterns, predict patient outcomes, and improve overall care delivery.



## Interoperability

Azure supports open standards and protocols, making it easier to achieve interoperability between different systems. This is especially crucial in the healthcare industry, where seamless data exchange between healthcare providers and systems can lead to better patient care and outcomes.



## Global Reach

For healthcare organizations with a global presence, Azure's extensive network of data centers enables them to deploy Epic instances closer to their end-users, reducing latency and enhancing user experience across the world.



# Why work with CDW for EHR?



We offer project-based or fully managed services for Epic's technical infrastructure and data analytics, including Epic reporting, Clarity, and Caboodle data management. We maximize the value of Epic's tools and can enhance them with industry-leading third-party solutions for a modern data platform. We also assist in establishing and advancing data governance and advanced analytics.



Because security is a top priority, we have designed specific EHR security solutions that support identity and access management (IAM) segmentation, IoMT, ransomware protection, IR tabletops, backup and recovery, and public cloud.



With our world-class partnerships and deep expertise, we have developed solutions for healthcare incident response (IR) and business continuity plans with healthcare-centric security and governance top of mind. We can modernize your security posture from scratch while taking your business goals into consideration to meet the ever-changing demands of the healthcare industry.

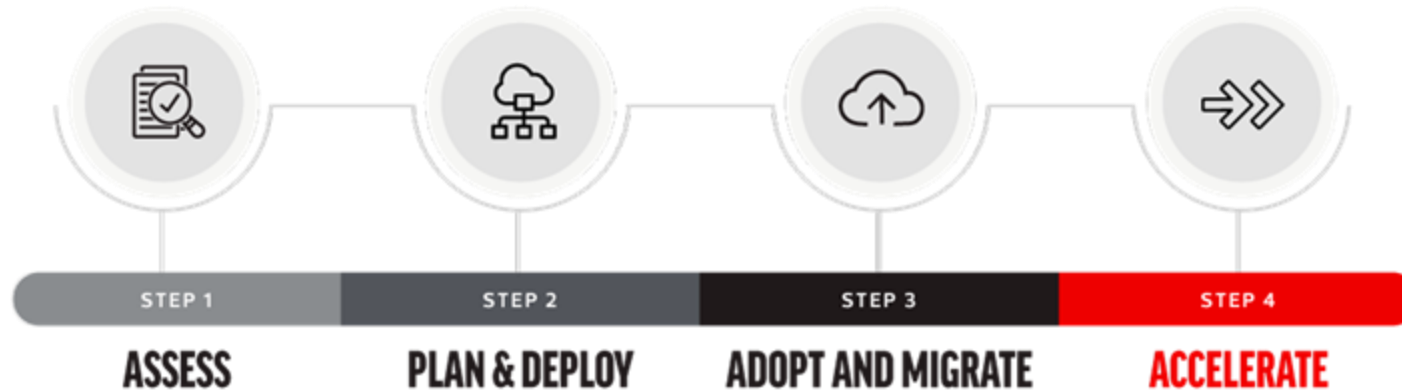
---

# Our Approach

The background features a dark blue gradient with flowing, ethereal waves in shades of blue and orange. The lower portion of the image is filled with a field of small, glowing particles in white, blue, and orange, resembling a starry or digital space.

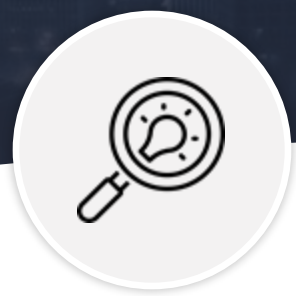
# Moving through the azure cloud adoption journey

CDW provides you with the foundation, roadmap, and the expert guidance to best leverage the benefits of modern cloud-native infrastructure methodologies that leads to a proven, scalable, secure, performant platform to move massive platforms like Epic to the cloud.



# What your engagement looks like

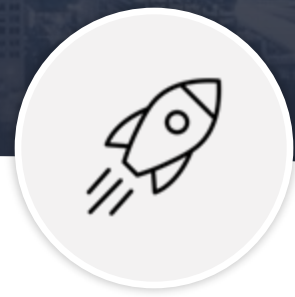
Digital Velocity's prescriptive approach to Epic on Azure



**PHASE 1**  
Assessment  
and  
Discovery



**PHASE 2**  
Planning and  
Design  
Workshops



**PHASE 3**  
Deploy Azure  
Landing Zone for  
Epic



**PHASE 4**  
Lifecycle  
Management and  
Extended Services

# Assessment & Discovery



In the **Assessment & Discovery** phase, we conduct a thorough analysis of your organization's existing EHR infrastructure and requirements. Through this process, we identify the optimal paths for migration of EHR to Azure, assess potential risks and challenges, and provide a comprehensive Total Cost of Ownership (TCO) analysis. This phase lays the foundation for a successful Epic implementation on Azure by understanding your unique needs and setting the right direction for the journey ahead:

## In-depth Analysis

We conduct a thorough assessment of your organization's existing infrastructure and requirements to understand the scope of the Epic implementation.

## Workload Suitability

Identify the optimal workloads for migration to Azure, ensuring that Epic and other critical applications are prioritized.

## Risk Assessment

Evaluate potential risks and challenges, developing mitigation strategies to ensure a smooth transition to Azure.

## TCO Analysis

Provide a detailed Total Cost of Ownership (TCO) analysis, outlining cost benefits and long-term savings by running Epic on Azure.

# Planning & Design Workshop



The **Planning & Design Workshops** phase involves collaborative sessions with your team to design an enterprise scalable Azure architecture tailored to your current Epic needs and future growth. We develop strategies for high availability, disaster recovery, and network & data integration, ensuring a secure and efficient transition to Azure. By creating a detailed deployment and data migration plan, we ensure the seamless transfer of sensitive healthcare data to the cloud.

## Architecture Design

Collaborate with your team to design a robust and scalable Azure architecture tailored to your Epic needs.

## High Availability & Disaster Recovery

Develop a comprehensive strategy for high availability and disaster recovery to ensure continuous operations and data protection.

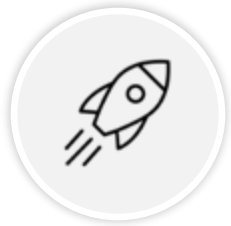
## Network Integration

Plan the integration of your on-premises network with Azure, enabling secure communication between your organization and the cloud.

## Data Migration

Create an EHR data migration plan, addressing the secure transfer of sensitive healthcare data to Azure.

# Deploy Azure Landing Zone for Epic



In the **Deploy Azure Landing Zone** specific for Epic phase, we put the designed architecture into action. This involves implementing a customized Azure Landing Zone optimized for Epic, incorporating identity and access management controls, security measures, and scalability features. By ensuring the Azure environment is tailored for Epic's unique requirements, we guarantee a reliable and secure foundation for your EHR system.

## Landing Zone Setup

Implement a customized Azure Landing Zone optimized for Epic, meeting performance, security, and compliance requirements.

## Identity and Access Management

Set up secure identity and access controls, ensuring appropriate user permissions for accessing Epic and other resources.

## Security & Compliance

Deploy Azure's robust security measures, including encryption, threat detection, and compliance tools, to safeguard patient data.

## Scalability & Performance

Optimize the Azure infrastructure to handle varying workloads, ensuring peak performance during critical periods.

## Coordinated Integration

Coordinate with cross functional teams so that the landing zone functions as a component of your technology ecosystem.

# Epic Life Cycle and Extended Services



The **Lifecycle Services** phase marks a customized journey from start to finish for your Epic on Azure ecosystem. With strategic planning and program management, we guide you through the decision-making process and manage hardware procurement, application rationalization, and decommissioning of old systems. Our team ensures a smooth implementation of Epic, with customized workflows and comprehensive training for all users. We continue to provide post-implementation support, adapting the Epic environment to evolving business needs while offering go-live support for critical moments.

## Program Management

Manage hardware/software procurement, application rationalization, and decommissioning old systems, ensuring a smooth transition to Azure.

## Implementation & Customization

Develop and customize Epic workflows to align with your organization's culture and timelines.

## Training Curriculum

Create tailored training programs for all Epic users, including continuous training for updates and new users.

## Post-implementation Support

Offer "go-live-at-the-elbow" and help desk support options for a seamless transition to the new Epic ecosystem.

## Environment Evolution

Continuously adapt and optimize the Epic environment to align with your evolving business needs.



---

**Thank You!**

