

Data sheet

# Sage Intacct Financials Powered by an Intelligent GL

Transform your business strategy  
and processes

**Only Sage Intacct delivers continuous accounting, continuous trust, and continuous insights powered by artificial intelligence (AI)**

The Intelligent GL, available only from Sage Intacct, is at the core of Sage Intacct Financials and Intelligent Organization, connecting your financial and organizational workflows. Automation, coupled with the power of AI, frees your team from manual effort and arms you with active insights, so you can elevate your work and be a strategic leader to your business.

**Transform your business with a modern, cloud-based architecture**

The Sage Intacct modern, cloud-based architecture provides the flexibility and efficiency you need to adapt to change and growth. Best of all, they're configurable by a business user—no developer needed.

- Streamline your chart of accounts while improving visibility using dimensions and dimension structures.
- Enter transactions once and report on them across multiple financial standards such as GAAP, IFRS, tax, and cash basis, side by side, using multiple books. Additionally, create your own user-defined books to meet your unique needs.
- Define your own workflows and set guardrails for consistency and accuracy with user-defined transaction steps and

approvals, smart rules and events, dimension controls, and more.

- Continuously close your books throughout the month to eliminate the period-end scramble using integration, automation, and artificial intelligence.

**Transform your business strategy with agile decisions based on trusted data**

Don't wait for the close to get the information you need. Only Sage Intacct uses the power of AI and automation to deliver continuous accounting, trust, and insights.

- Get instant insights. Capture, post, and report on transactions in real-time with no lag. Use dashboards for at-a-glance insights with one click drilldown to source transactions.
- Share insights flexibly and securely with only those who need it.

The Sage logo is displayed in a bright green, sans-serif font at the bottom left of the page.

- Review thousands of GL transactions using AI powered outlier detection for higher efficiency, accuracy, and confidence in your numbers.

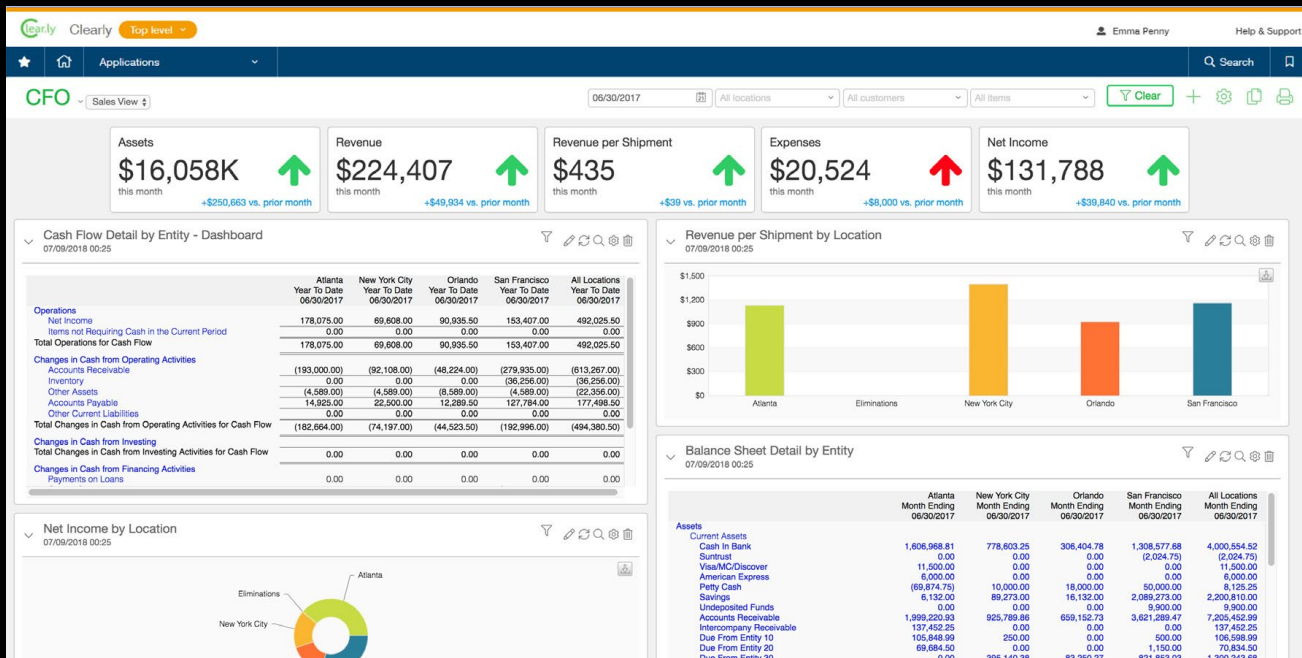
**Transform your multi-entity operations with continuous consolidations**

Sage Intacct automates multi-entity processes so as your entities multiply, your workload doesn't.

- Create and modify entities and hierarchies without a new implementation.
- Reduce inter-entity errors and reconciliation time with centralized, automated instructions.
- Eliminate currency conversion errors and save hours of manual calculations for high transaction volumes with automated currency rate tables and conversions.
- Continuously consolidate financials and maintain drilldown visibility.

**Halstatt automated core accounting processes, enabling:**

- \$100K savings annually
- 65% faster monthly close
- 60% greater overall finance efficiency
- 100 hours to minutes reporting time reduction
- Consolidations in minutes versus 80 to 100 hours



Make data-driven decisions based on real-time, trusted insights

**sageintacct.com**  
**877-437-7765**



© 2022 The Sage Group plc or its licensors. Sage, Sage Logos, Sage product and service names mentioned herein are the trademarks of The Sage Group plc or its licensors. All other trademarks are the property of their respective owners.