



IBM Panorama

IBM Panorama delivers the full set of services required to deliver workflows across all public health program functionality. The business processes are organized into **disease surveillance** and **immunization services**, each with two underlying components that assist public health professionals in monitoring, managing and reporting on public health.

Within disease surveillance, the investigation management and outbreak management modules support the needs of investigation, monitoring, contact tracing, management, analysis, and reporting of 150 communicable diseases and conditions. **Within immunization services, the inventory management and immunization management modules** support jurisdictional immunization management and distribution.

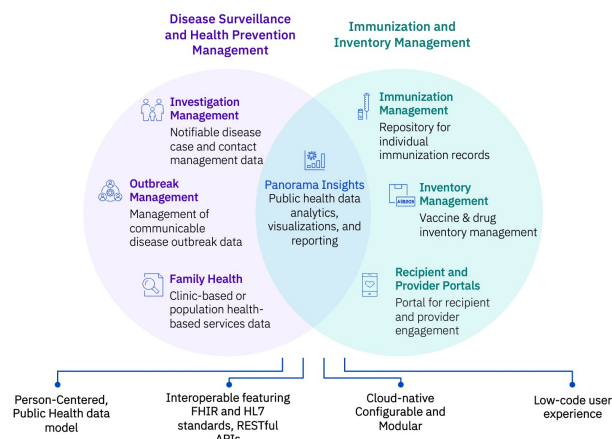
Panorama workflows and data flows are configurable for end-to-end administration of all state-delivered vaccines for adults and children. This is particularly helpful during specialized immunization campaigns targeting specific geographies and cohorts served by the state and local public health agencies.

Investigation Management provides tools for public health professionals to identify, investigate, and manage cases and contacts of communicable diseases. It provides a longitudinal view of the public health record of a client or non-human subject and is designed to help contain a disease and reduce risk to the public.

Outbreak Management enables situational awareness and investigation, monitoring, management, analysis of disease outbreaks including reporting and interventional workflow and decision making of communicable disease outbreaks. Dashboards, alerts, and notifications enable clinical decision making and public communications.

Immunization Management provides tools required to create and manage immunization schedules and determine eligibility against a forecast. It supports users in planning, delivering, and keeping track of individual and mass immunization events. It also includes the ability to capture adverse reactions, precautions, contraindications, and exemptions, and to evaluate immunization coverage for a population. It also includes consent management capabilities.

Inventory Management supports the ability to plan, requisition, receive, distribute, and administer immunizing agents, medications, and consumable materials. It provides for the collection, storage, and retrieval of information about product characteristics, requisitions, and the distribution network. It manages information on holding and distribution locations for each product or product group and can track the movement of stock amongst distribution centers.



Sunaina Menawat
Public Health Industry Lead
IBM Consulting
Sunaina.Menawat@ibm.com

Panorama is a modular public health information system.

