



For MICROSOFT 365

Tenant-to-Tenant Migration using

AVAMIGRATRON

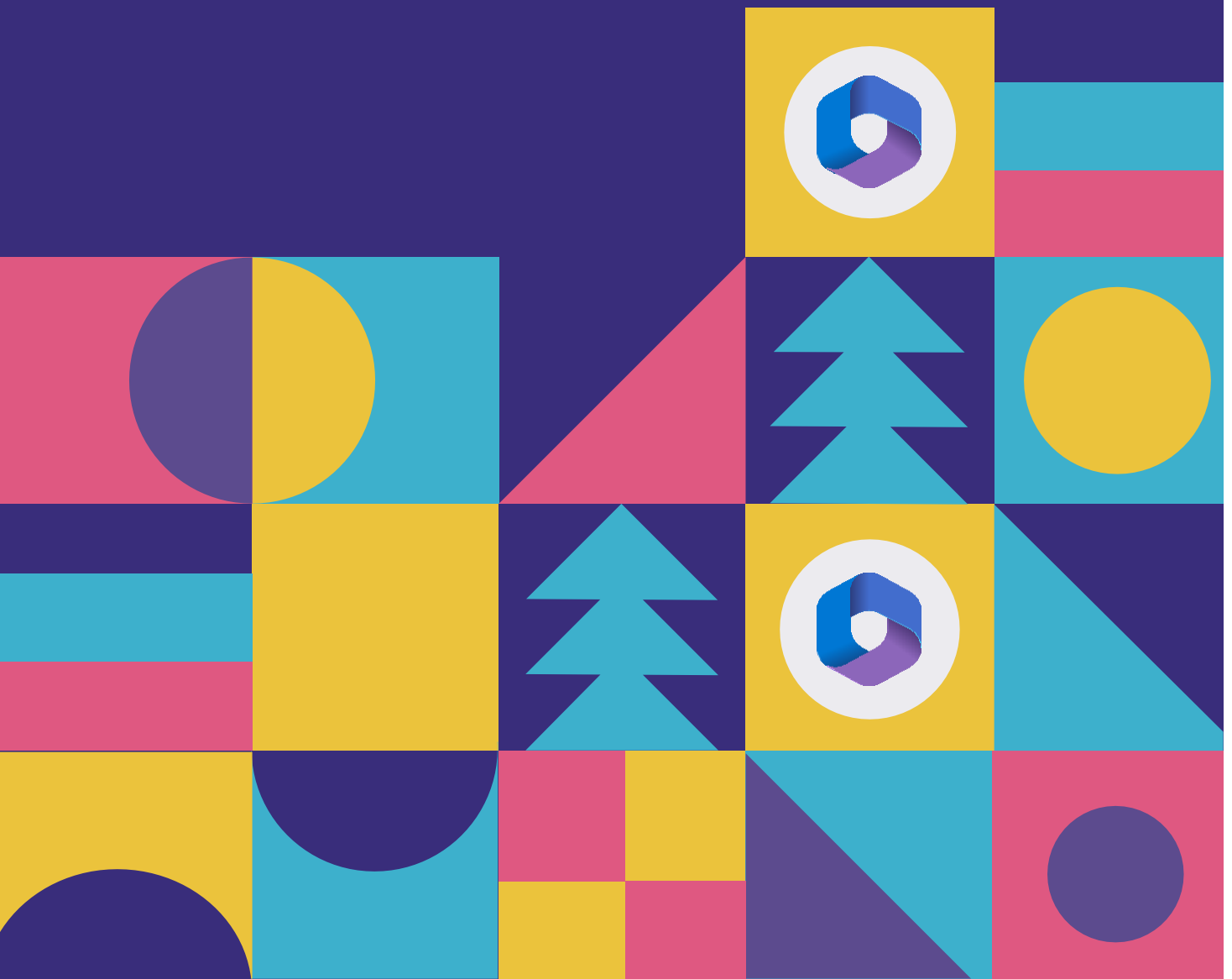


Table of Contents

i. AVAMIGRATRON

ii. Introduction to M365 Tenant Migration

iii. Prerequisites

iv. Installation

v. Modules and Functionalities

Connectors

Inventory

User Mapping

Migration

Report

vi. Trouble Shooting

vii. Support



i. AVAMIGRATRON

At AVASOFT, we champion the cause of digital transformation by bringing in cutting-edge solutions that augment a seamless migration.

AVAMIGRATRON is our flagship product that has enabled around 500+ enterprises to perform migration at warp speed. No matter what your migration need is, we have solutions that fulfill your need!

- ✦ M365 Tenant-to-Tenant Migration
- ✦ GSuite Migration
- ✦ Slack Migration
- ✦ SharePoint to SharePoint Migration
- ✦ IBM Migration

Who is this guide for?

- For anyone who wants to get an overview of our tool and its functionalities.
- Experienced system administrators who can connect to remote systems and use a variety of administration tools.

ii. Introduction to M365 Tenant Migration:

Planning to perform an M365 Tenant migration followed by a merger or an acquisition? We got you!

"AVAMIGRATRON is the only Enterprise-ready & comprehensive Tenant-to-Tenant migration solution in the market, that ensures that you are all covered in your M365 migration journey."

- ✦ Perform complex technical migration through a simple windows interface.
- ✦ Migrate from one tenant to another at lightning speed with best-in-class security.
- ✦ Perform parallel migration of your M65 applications and speed up your transition!



With AVAMIGRATRON you can perform!

1. User Migration

- ✦ User creation with mandatory profile details
- ✦ User Exchange Online mailbox
- ✦ User OneDrive & OneNote
- ✦ User Shared mailbox (Exchange Online)

2. Tenant Apps Migration

- ✦ M365 Groups & Permission
- ✦ Security groups & Distribution List.
- ✦ Rooms & Equipment's

Security & Performance

Security:

Know how we handle your security!

- AVASOFT has achieved ISO 27001:2013 certification for practicing the highest level of security from the International Organization for Standardization.
- To ensure an invincible level of security, we have invested significant efforts into making the platform and your data secure.

Security and Compliance

- **Security:** Physical and logical protection against unauthorized access.
- **Availability:** The system will be operationally available for use as committed or agreed.
- **Processing Integrity:** System processing will be complete, accurate, timely, and authorized.
- **Confidentiality:** All the information will be classified and protected as committed or agreed.
- **Privacy:** Personal information will be collected, used, retained, and transferred as committed or agreed.



What do we store

"Nothing will be stored internally! And no data will persist on the platform!"

- When you perform your migration with us, we don't even store your mail, files, or site data.
- Your migration with us will only take place in real-time in memory – The migration engine will connect to the source, pull the data, and push it in real-time. (Nothing will be stored or contained!)
- However, for migration using delta pass, we store the reference ID of each data migration in a SQL database with the data of modification. we collect the reference ID.
- This is performed to ensure that no data is duplicated during the delta pass. And for increased efficiency, only the changes will be propagated.

Credentials to connect to different systems

- Since the platform needs credentials to connect to the source and the target, you need to provide the defined credentials that will be used to establish the connection.
- As a best practice suggestion, we recommend you create temporary users during the migration and change the password after completing the course of your migration project.

Credentials to connect to the platform

- Passwords are not stored in a reversible way.
- Instead, they are stored in an encrypted format so that no one can get access to it.

Performance

Our clients approach us with a lot of questions about what we do to enhance the performance and efficiency of email migration as there are a lot of considerations in it.

- To ensure optimal performance our platform leverages the best-fit resources to provide the fastest migration, no matter the size of your data.
- With AVAMIGRATRON, you can decide on the volume of the data you need to migrate and the duration within which you want to complete the migration.



- However, many email systems can lead through throttling issues. When too many API calls are made per minute, the email server will begin throttling and reduce the number of calls that will be performed in a minute.
- In AVASOFT we envision and bring to life a migration that is secure and on time! To ensure that you experience zero to minimal throughput, we perform all the best practices and process your migration in batches.
- We also strictly abide by M365 best practices to maximize throughput and limit throttling.

Microsoft 365 Limitations

- Microsoft 365 uses **throttling policies** to limit the resources consumed by a single account.
- An account that has impersonation privileges can impersonate 100 users concurrently to migrate 100 mailboxes in parallel. The platform uses EWS (Exchange Web services) protocol; Microsoft used to document that theoretically, EWS allowed a throughput of around 300 MB per user per hour. This documentation is not effective anymore. And our platform typically sees better throughput.
- If you wish to further improve throughput, you can create distinct migration accounts and create additional connectors on the platform given the fact that each connector can migrate 100 users in parallel. For example, if you create two targets Office 365 connectors (each with its own distinct migration account), you can migrate 200 mailboxes concurrently.

iii. Prerequisites

- Microsoft apps should be installed on the machine.
- .NET Framework 4.8 should be enabled on the machine.
- SQL Management Studio 18.2
(<https://download.microsoft.com/download/8/a/8/8a8073d2-2e00-472b-9a18-88361d105915/SSMS-Setup-ENU.exe>)
- SQL Server 2019
Express (<https://download.microsoft.com/download/7/f/8/7f8a9c43-8c8a-4f7c-9f92-83c18d96b681/SQL2019-SSEI-Expr.exe>)



- 32 GB of RAM
- Hard disk 500 GB Minimum.
- OS version from V 8.
- Minimum 8-core processor. (10 core preferable.)
- SharePoint Online Management Shell.
[\(Download SharePoint Online Management Shell from Official Microsoft Download Center\)](#)

The user should generate the following details with the admin console for connecting the M365.

- ✦ Azure Client ID generation
- ✦ Azure Client secret ID generation
- ✦ There should be no third-party authentication in the application.
(MFA/SSO should be disabled for Tool connected users)
- ✦ Global Administrator credentials are required to establish the M365 connection.

iv. Installation

- The setup file should be generated with the MAC and IP address.
- Once the setup file is generated, right click on AVAMIGRATRON“set up” file, and choose the “Run as administrator” option.
- Now click on the “Next” button on the welcome screen.
- In the “Destination Folder” screen choose the destination location where you want the application to be installed. By default, ‘C’ drive will be selected.
- If you want to change the location, you can easily change it by clicking on the ‘Change’ button. Once you have selected the application click ‘OK’.
- Now, click on the ‘Install’ button in the ‘Ready to Install the Program’ screen.
- Once done, click on the ‘Finish’ button in the ‘Install shield wizard completed’ screen to install the tool in the machine.
- Now, fill in all the required details of SQL authentication or windows authentication in the SQL database settings popup.



- As a next step, click on the 'Tool Location' button to select the location where you want the tool to be installed.
- Moving ahead, click on the "Create Data Base" button to create the database.
- Now, click 'OK' in the confirmation popup.
- Once the database is created successfully, Tables and store procedure (Script) will be created.
- Post installation, read and write permission should be provided.

V. Modules and Functionalities

1. Connectors

a) Source Connection:

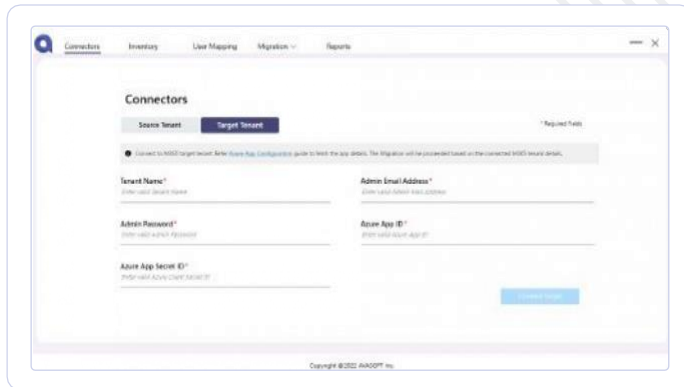
You need to generate the following credentials in M365 Azure Admin Portal and connect it with AVAMIGRATOR connection engine.

- Tenant Name
- Admin Email Address
- Admin Password
- Azure App ID
- Azure App Secret ID.



Note: To know more about how to create the above-mentioned credentials and establish the source connection refer to the Azure App Configuration Guide present in our tool.

b) Target Connection



The screenshot shows the 'Connectors' section of the AVAMIGRATOR tool. It features a 'Target Tenant' configuration form with the following fields:

- Tenant Name*** (Placeholder: ENTER HERE TENANT NAME)
- Admin Email Address*** (Placeholder: ENTER HERE ADMIN EMAIL ADDRESS)
- Admin Password*** (Placeholder: ENTER HERE ADMIN PASSWORD)
- Azure App ID*** (Placeholder: ENTER HERE AZURE APP ID)
- Azure App Secret ID*** (Placeholder: ENTER HERE AZURE APP SECRET ID)

A 'Connect Tenant' button is located at the bottom right of the form. A note above the form states: 'Connect to M365 target tenant. Refer Azure App Configuration guide to learn the app details. The Migration will be processed based on the connected M365 tenant details.'

You need to generate the following credentials in M365 Azure Admin Portal and connect it with AVAMIGRATOR connection engine.

- Tenant Name
- Admin Email Address
- Admin Password
- Azure App ID
- Azure App Secret ID.

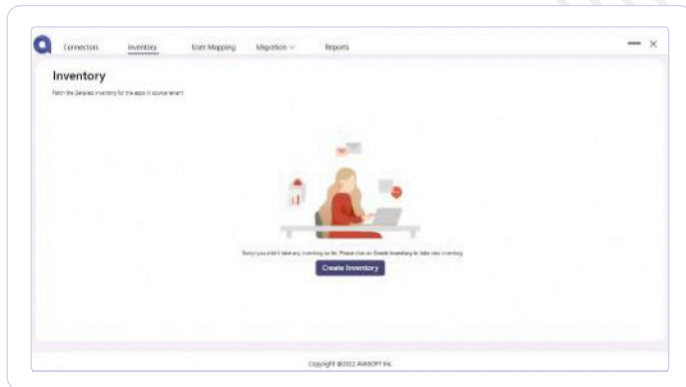
Note: To know more about how to create the above-mentioned credentials and establish the target connection refer to the Azure App Configuration Guide present in our tool.

2. Inventory

AVAMIGRATOR inventory capabilities will provide you with in-depth details about user-level applications and tenant-level applications in M365.



- To create a new inventory, click the **Create Inventory** button on the inventory landing screen.



AVAMIGRATRON will provide details about the following application's content from the connected Tenant.

- **User Application**

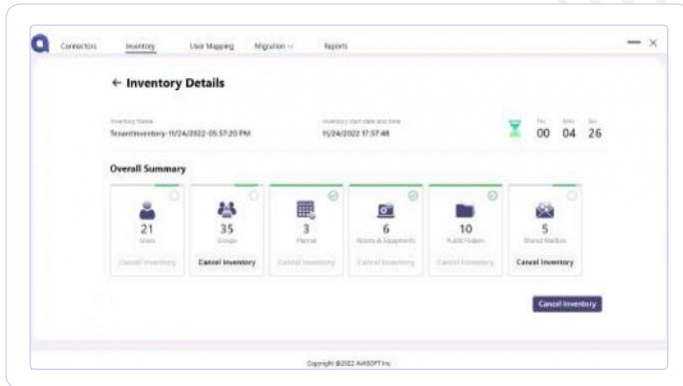
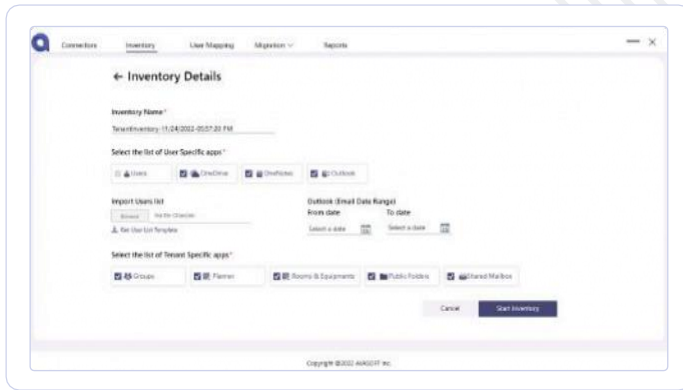
- ✦ User creation with mandatory profile details.
- ✦ User Exchange Online mailbox.
- ✦ User OneDrive & OneNote
- ✦ User Shared Mailbox (Exchange Online)

- **Tenant Application**

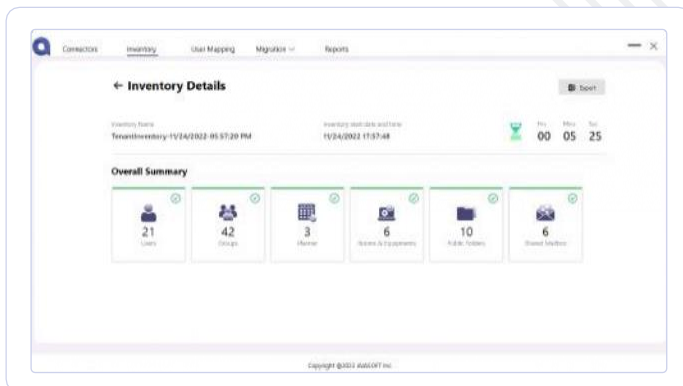
- ✦ M365 Groups & Permission & Conversation
- ✦ Security Groups & Distribution List
- ✦ M365 Groups associated planner.
- ✦ Public Folder
- ✦ Rooms and Equipment.

Note: AVAMIGRATRON can fetch the custom a specific user's Exchange Online mailbox with the custom Start date and End date.





- Inventory fetching of Microsoft 365 User/App details will be displayed after proceeding “Create Inventory” button.



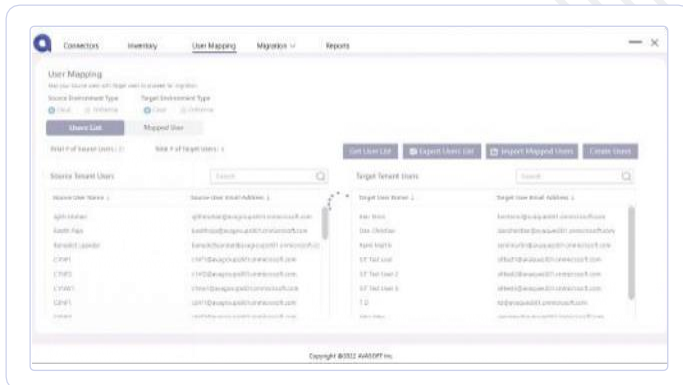
- After getting a high-level inventory, a detailed inventory of Microsoft 365 Users and Apps will be displayed.
- By clicking the respective application count, you can get to know the detailed count of each application.
- Similarly, by clicking on the export button, you can export the inventory details.

3. User Mapping

- In this module, the users from Source Microsoft 365 will be mapped with the corresponding user accounts created in Target M365.
- Content will be migrated against the mapped users along with the relevant permission levels in the source Microsoft 365 Tenant.

User Profiles:

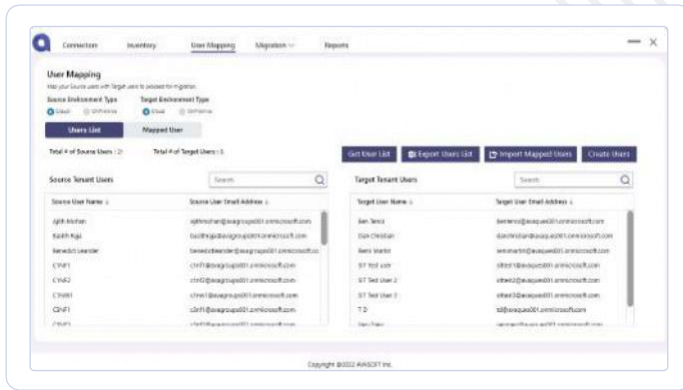
- Click the “Get Users List” button to fetch the users list.



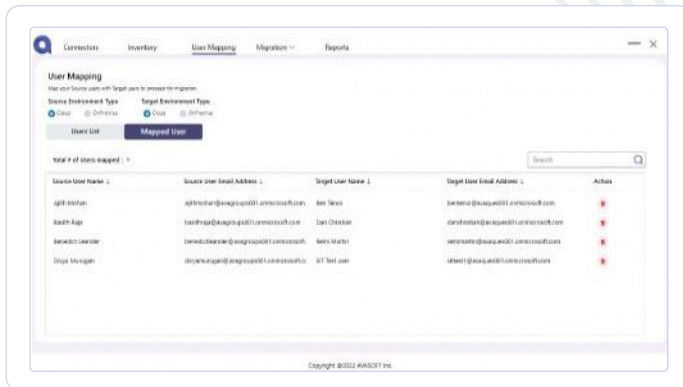
Users List Tab:

- The **Get Users List tab** displays the users list from the source/target Microsoft 365 users.





- **Export Users List** button will export the source and Target M365 users list and map the source user with the equivalent Target M365 user.
- After this step, you can leverage the **Import Mapped Users** button to import the mapped users.
- If you wish to create a new Tenant in the target M365 Tenant, you can easily perform it by clicking on the **'Create User'** button.

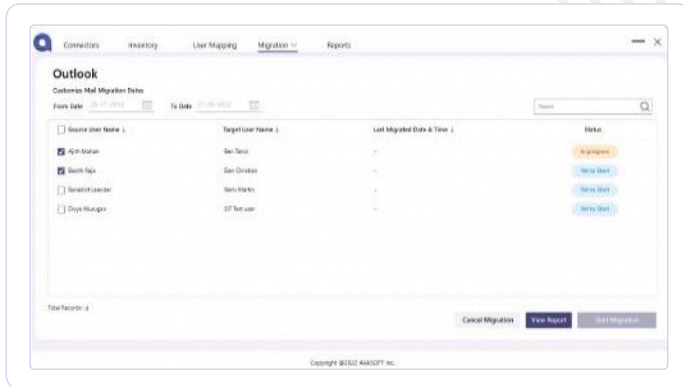


- The **Mapped Users** tab displays the mapped users from the source and the target Microsoft 365 account.



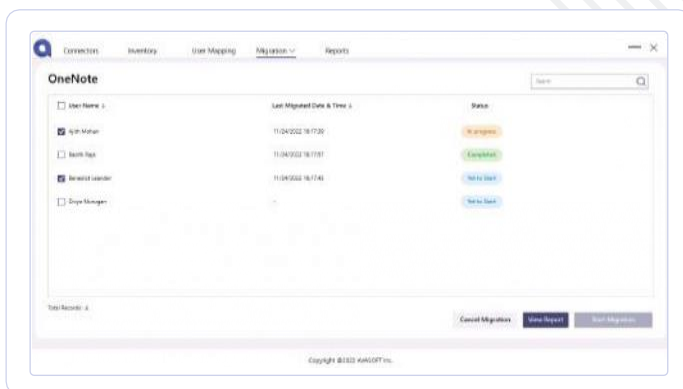
4. Migration

Outlook Migration



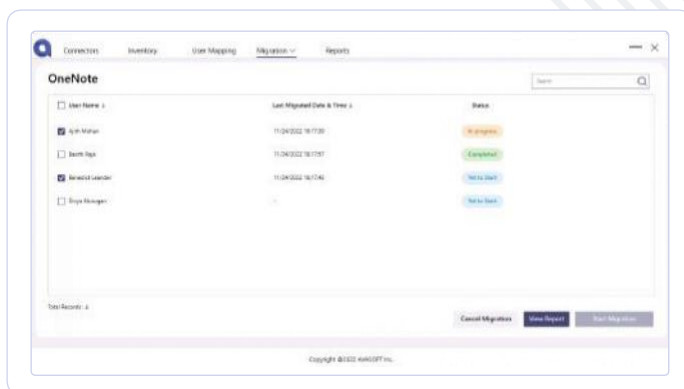
- In Outlook migration, you can migrate all the emails/custom emails (emails from a specific time), depending on your requirement.
- Select the Source User Name in the grid.
- Click the Start Migration button to initiate the Outlook migration.
- View Report button will be enabled after initiating migration.
- Detailed outlook migration report will be displayed after clicking the View Report button.
- Cancel – button will be enabled after initiating migration. You can click on this button if you wish to cancel the migration.

OneDrive Migration



- Select the Source **User Name** in the grid.
- Click the **Start Migration** button to initiate the OneDrive migration.
- **View Report button** will be enabled after initiating migration.
- Detailed outlook migration report will be displayed after clicking the **View Report** button.
- **Cancel** – button will be enabled after initiating migration. You can click on this button if you wish to cancel the migration.

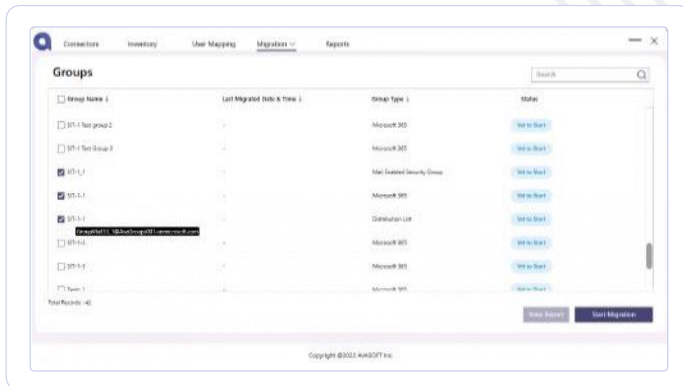
OneNote Migration



- Select the **Source User Name** in the grid.
- Click the **Start Migration** button to initiate the OneNote migration.
- **View Report button** will be enabled after initiating migration.
- Detailed outlook migration report will be displayed after clicking the **View Report** button.
- **Cancel** – button will be enabled after initiating migration. You can click on this button if you wish to cancel the migration.

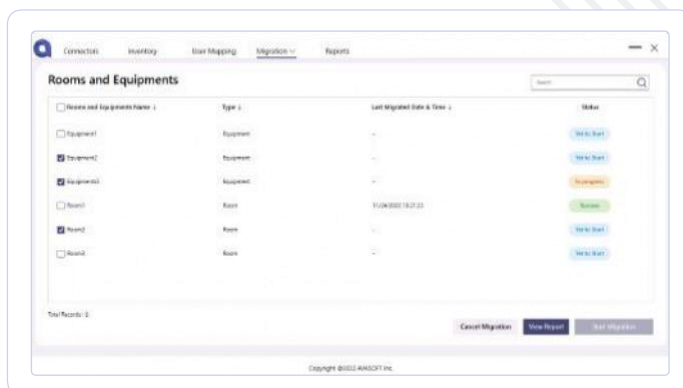


Groups Migration



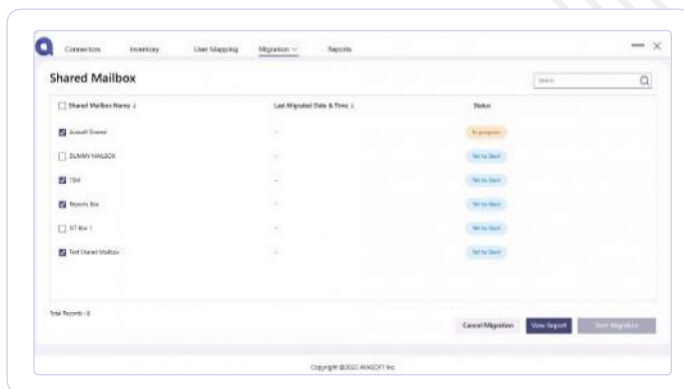
- Select the **Source User Name** in the grid.
- Click the **Start Migration** button to initiate the Groups migration.
- **View Report** button will be enabled after initiating migration.
- Detailed outlook migration report will be displayed after clicking the **View Report** button.
- **Cancel** – button will be enabled after initiating migration. You can click on this button if you wish to cancel the migration

Rooms and Equipment Migration



- Select the **Source User Name** in the grid.
- Click the **Start Migration** button to initiate the Rooms and Equipment migration.
- **View Report button** will be enabled after initiating migration.
- Detailed outlook migration report will be displayed after clicking the **View Report** button.
- **Cancel** – button will be enabled after initiating migration. You can click on this button if you wish to cancel the migration

Shared Mailbox Migration

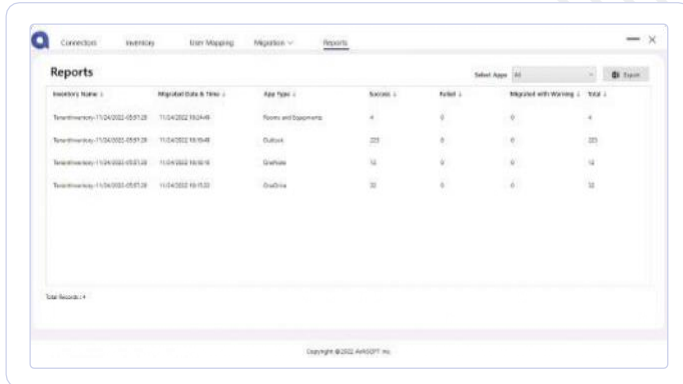


- Select the **Source User Name** in the grid.
- Click the **Start Migration** button to initiate the Shared Mailbox migration.
- **View Report button** will be enabled after initiating migration.
- Detailed outlook migration report will be displayed after clicking the **View Report** button.
- **Cancel** – button will be enabled after initiating migration. You can click on this button if you wish to cancel the migration



5. Report

Report Landing



Inventory Name	Migrated Date & Time	App Type	Success	Failed	Migrated with Warning	Total
TestInventory-11/04/2022-05:07:28	11/04/2022 19:24:46	Rooms and Equipment	4	0	0	4
TestInventory-11/04/2022-05:07:28	11/04/2022 19:19:48	Outlook	223	0	0	223
TestInventory-11/04/2022-05:07:28	11/04/2022 19:30:18	OneDrive	16	0	0	16
TestInventory-11/04/2022-05:07:28	11/04/2022 19:15:22	OneNote	20	0	0	20

- In this module, you can find details about the list of applications that are migrated.
- When you click on 'Select Apps', a dropdown will be shown out of which you can select the specific application for which you wish to see the report.

- ✦ Outlook: Outlook migration reports will be displayed.
- ✦ OneDrive: OneDrive migration reports will be displayed.
- ✦ OneNote: OneNote migration reports will be displayed.
- ✦ Groups: Groups migration reports will display.
- ✦ Planner: Planner migration reports will be displayed.
- ✦ Rooms and Equipment: Rooms and Equipment migration reports will be displayed.
- ✦ Public Folder: Public Folder migration reports will be displayed.
- ✦ Shared Mailbox: Shared Mailbox migration reports will be displayed.

When you click on the **Inventory Name**, it will display the Name with Inventory Count, Success, Failed, migrated with warning, and Total counts.



VI. Troubleshoot

- AVASOFT provides extensive support materials to help you fix issues on the go without any bottlenecks. Our resources extend from common error-handling messages to video guides and downloads.
- Visit our knowledgebase www.Avamigratron.com to explore more.

VII. Support

- Post migration, our team will render 24/7 uninterrupted support to ensure that there are no hiccups in your tenant-to-tenant migration endeavor.
- To know more about our migration strategies and support, read our blog [Best Office 365 Tenant Migration Strategy and Support - AVAMIGRATRON](#)
- Although we provide end-to-end support to our product suites, we do not provide support for third-party products like PowerShell, or Server Administration of Microsoft, or Google Products.

We hope our guide would've given you a precise understanding of our seamless Tenant-to-Tenant migration solution. If you find difficulty in performing any of the above-mentioned steps, you can connect with our consulting team.

Our expert consulting team has helped various enterprises to achieve a fast, cost-effective, stress-free, and scalable M365 Tenant-to-Tenant migration.

[Talk to us Today!](#)

