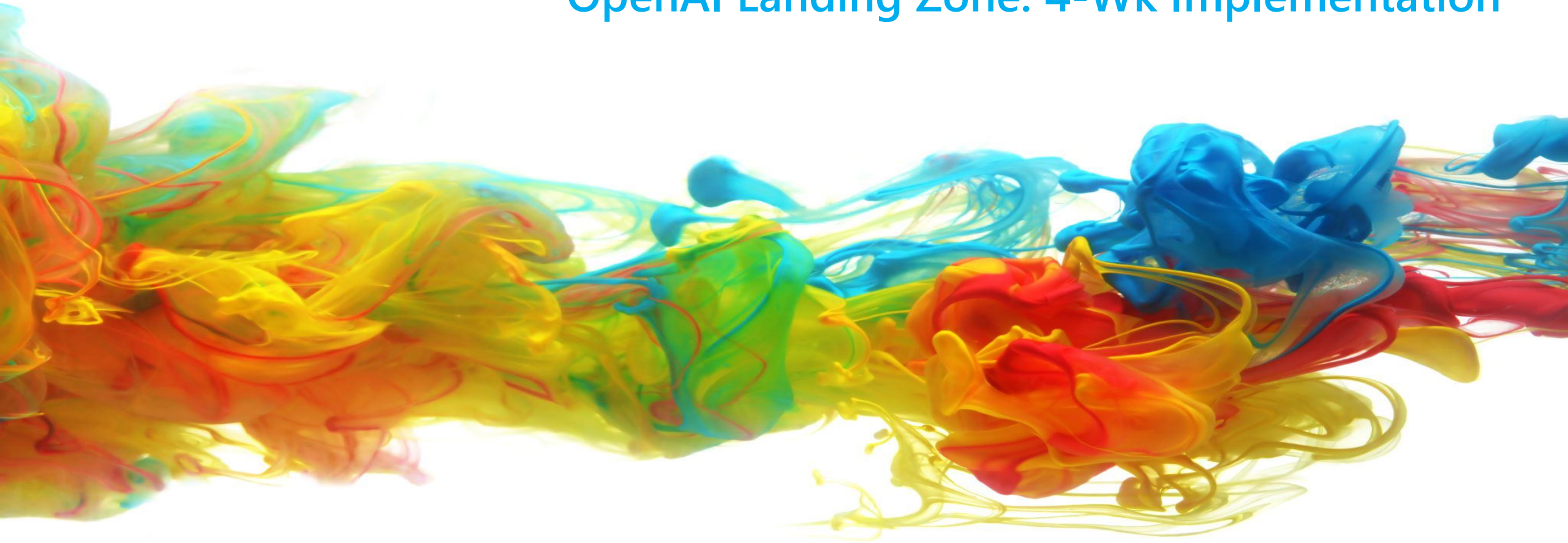




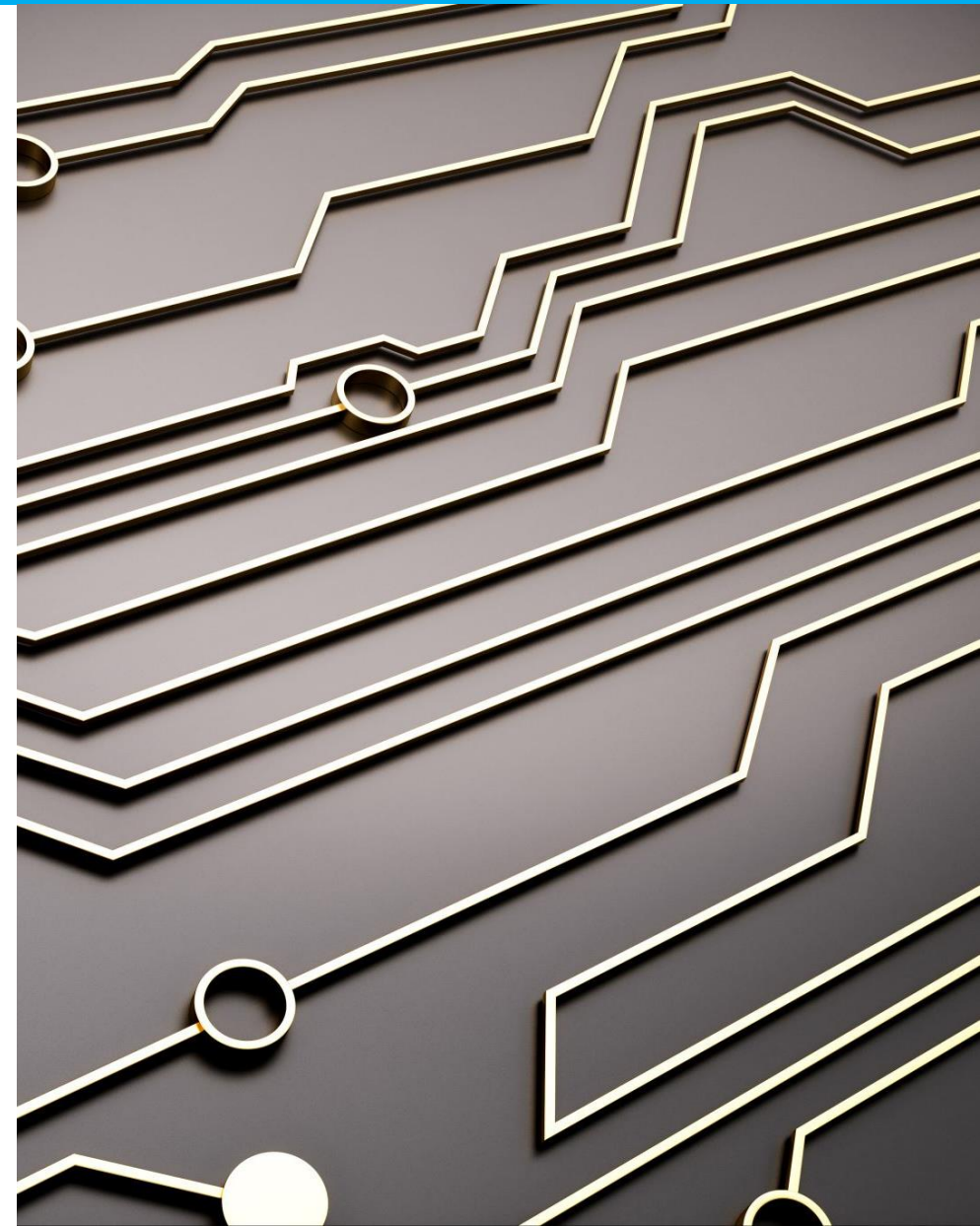
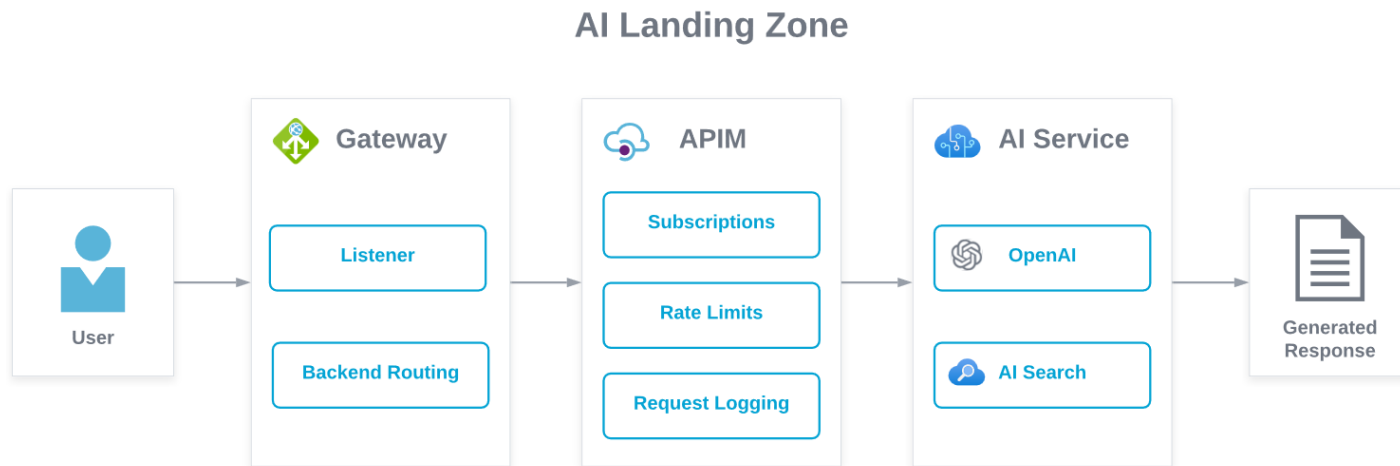
*A Women Owned/Women Led Company*

## OpenAI Landing Zone: 4-Wk Implementation



# The Problem

Many businesses are facing challenges in deploying, managing, and scaling their AI workloads efficiently and securely on the cloud. They require a robust, scalable, and efficient environment that can handle Open AI workloads while ensuring maximum security, performance, and compliance. The lack of expertise in deploying the necessary Azure cloud resources, API Management, and Log Analytics Workspaces further complicates the deployment and management of Azure Open AI and other AI Services.



# The Solution

An **AI Landing Zone** provides a **solid foundation** for your cloud environment. When deploying complex AI services such as **Azure OpenAI**, using a Landing Zone approach helps you manage your resources in a structured, consistent manner, ensuring governance, compliance, and security are properly maintained.

- Define a strategy for an AI Landing Zone
- Scalable and secure platform to support demand for OpenAI
- Develop resource templates for landing zone resources
- Conduct vision sessions to explore new capabilities
- Ensure observability through monitoring and reporting





# Thank You

[info@spyglassmtg.com](mailto:info@spyglassmtg.com)