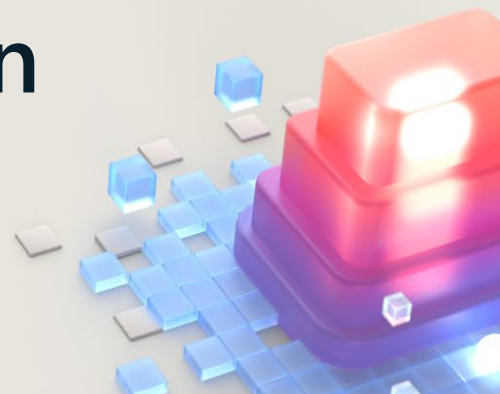




Microsoft Certification exam prices effective November 1, 2024



New pricing (in USD) for Microsoft Certification exams: Fundamentals

\$99	\$84	\$69	\$59	\$50		\$44	
Bermuda	Aland Islands	Antigua and Barbuda	American Samoa	Afghanistan	Fiji	Republic of Kosovo	Bhutan
Bouvet Island	Andorra	Aruba	Argentina	Albania	French Southern	Republic of the Congo	Dominica
Cayman Islands	Australia	Bahamas	Belize	Algeria	Gabon	Reunion	Equatorial Guinea
French Polynesia	Austria	Barbados	Bolivia	Angola	Gambia	Russian Federation	Eswatini
Guam	Belgium	Curacao	Brazil	Anguilla	Georgia	Rwanda	India
Marshall Islands	Canada	Guadeloupe	Bulgaria	Antarctica	Ghana	Saint Barthelemy	Lao People's Democratic Republic
Micronesia	Denmark	Hong Kong	Chile	Armenia	Guinea-Bissau	Saudi Arabia	Lesotho
Nauru	Faroe Islands	Martinique	Colombia	Azerbaijan	Guinea	Senegal	Myanmar
New Caledonia	Finland	Northern Mariana	Costa Rica	Bahrain	Guinea-Bissau	Serbia	Nepal
Niue	France	Papua New Guinea	Croatia	Bangladesh	Heard Island/McDonald Islands	Seychelles	Pakistan
Norfolk Island	Germany	Puerto Rico	Cyprus	Belarus	Indonesia	Sierra Leone	Palestine, State of
Palau	Gibraltar	Saint Kitts and Nevis	Czech Republic	Benin	Iraq	Somalia	Sao Tome and Principe
Pitcairn	Greenland	Saint Lucia	Dominican Republic	Bonaire, Sint Eustatius, and Saba	Israel	South Sudan	South Africa
Sint Maarten	Guernsey	Saint Martin	Ecuador	Bosnia and Herzegovina	Jordan	St. Helena	Sri Lanka
South Georgia	Iceland	Singapore	El Salvador	Botswana	Kazakhstan	Taiwan	Swaziland
St. Vincent and the Grenadines	Ireland	St. Pierre and Miquelon	Estonia	British Indian Ocean Territory	Kenya	Tajikistan	Ukraine
Tonga	Isle of Man		Greece	Brunei Darussalam	Kiribati	Tanzania	
Turks and Caicos Islands	Italy		Grenada	Burkina Faso	Kosovo	Thailand	
Tuvalu	Japan		Guatemala	Burundi	Kuwait	Timor-Leste	
United States	Jersey		Guyana	Cabo Verde	Kyrgyz Republic	Togo	
Vanuatu	Liechtenstein		Haiti	Cambodia	Lebanon	Tokelau	
Virgin Islands, British	Luxembourg		Honduras	Cameroon	Liberia	Tunisia	
Virgin Islands, U.S.	Monaco		Hungary	Central African Republic	Libya	Turkey	
Wallis and Futuna	Netherlands		Jamaica	Chad	Macedonia	Turkmenistan	
	New Zealand		Korea, South	China	Madagascar	Uganda	
	Norway		Latvia	Christmas Island	Malawi	United Arab Emirates	
	Portugal		Lithuania	Cocos (Keeling) Islands	Malaysia	U.S. Minor Outlying Islands	
	San Marino		Macao	Comoros	Maldives	Uzbekistan	
	Solomon Islands		Malta		Mali	Vietnam	
	Spain		Mexico		Mauritania	Western Sahara	
	Svalbard		Nicaragua		Mauritius	Yemen	
	Sweden		Panama		Mayotte		
	Switzerland		Paraguay		Moldova		
	United Kingdom		Peru		Mongolia		
	Vatican City State		Poland		Montenegro		
			Romania				

\$99	\$84	\$69	\$59	\$50			\$44
			Samoa Slovak Republic Slovenia Suriname Trinidad and Tobago Uruguay Venezuela	Congo, the Democratic Republic Cook Islands Côte d'Ivoire Djibouti Egypt Eritrea Ethiopia Falkland Islands	Montserrat Morocco Mozambique Namibia Niger Nigeria North Macedonia Occupied Palestine Territories	Zambia Zimbabwe	

For more details, read our blog post "New pricing for Microsoft Certification exams effective November 1, 2024."

New pricing (in USD) for Microsoft Certification exams: Advanced role-based

\$165	\$140	\$115	\$99	\$83			\$58
Bermuda Bouvet Island Cayman Islands French Polynesia Guam Marshall Islands Micronesia Nauru New Caledonia Niue Norfolk Island Palau Pitcairn Sint Maarten South Georgia St. Vincent Tonga Turks and Caicos Tuvalu United States Vanuatu Virgin Islands, British Virgin Islands, U.S. Wallis and Futuna	Aland Islands Andorra Australia Austria Belgium Canada Denmark Faroe Islands Finland France Germany Gibraltar Greenland Guernsey Iceland Ireland Isle of Man Italy Japan Jersey Liechtenstein Luxembourg Monaco Netherlands New Zealand Norway Portugal San Marino Solomon Islands Spain Svalbard Sweden Switzerland United Kingdom	Antigua and Barbuda Aruba Bahamas Barbados Curacao Guadeloupe Hong Kong Martinique Northern Mariana Papua New Guinea Puerto Rico Saint Kitts Saint Lucia Saint Martin Singapore St. Pierre	American Samoa Argentina Belize Bolivia Brazil Bulgaria Chile Colombia Costa Rica Croatia Cyprus Czech Republic Dominican Republic Ecuador El Salvador Estonia Greece Grenada Guatemala Guyana Haiti Honduras Hungary Jamaica Korea, South Latvia Lithuania Macao Malta Mexico Nicaragua Panama Paraguay	Afghanistan Albania Algeria Angola Anguilla Antarctica Armenia Azerbaijan Bahrain Bangladesh Belarus Benin Bonaire, Sint Eustatius and Saba Bosnia and Herzegovina Botswana British Indian Ocean Territory Brunei Darussalam Burkina Faso Burundi Cabo Verde Cambodia Cameroon Central African Republic Chad China Christmas Island	Fiji French Southern Gabon Gambia Georgia Ghana Guinea Guinea-Bissau Heard Island/McDonald Islands Indonesia Iraq Israel Jordan Kazakhstan Kenya Kiribati Kosovo Kuwait Kyrgyz Republic Lebanon Liberia Libya Macedonia Madagascar Malawi Malaysia Maldives Mali Mauritania Mauritius Mayotte	Republic of Kosovo Republic of the Congo Reunion Russian Federation Rwanda Saint Barthelemy Saudi Arabia Senegal Serbia Seychelles Sierra Leone Somalia South Sudan St. Helena Taiwan Tajikistan Tanzania Thailand Timor-Leste Togo Tokelau Tunisia Turkey Turkmenistan Uganda United Arab Emirates U.S. Minor Outlying Islands Uzbekistan Vietnam	Bhutan Dominica Equatorial Guinea Eswatini India Lao People's Democratic Republic Lesotho Myanmar Nepal Pakistan Palestine, State of Sao Tome and Principe South Africa Sri Lanka Swaziland Ukraine

\$165	\$140	\$115	\$99	\$83			\$58
	Vatican City State		Peru Poland Romania Samoa Slovak Republic Slovenia Suriname Trinidad and Tobago Uruguay Venezuela	Cocos (Keeling) Islands Comoros Congo, the Democratic Republic Cook Islands Côte d'Ivoire Djibouti Egypt Eritrea Ethiopia Falkland Islands	Moldova Mongolia Montenegro Montserrat Morocco Mozambique Namibia Niger Nigeria North Macedonia Occupied Palestine Territories	Western Sahara Yemen Zambia Zimbabwe	

For more details, read our blog post "New pricing for Microsoft Certification exams effective November 1, 2024."