



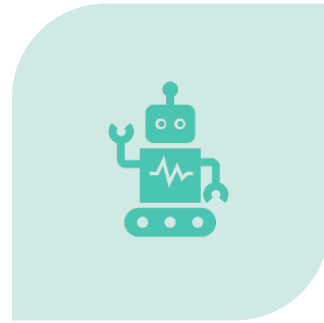
# AI Readiness, Strategy and Roadmap Engagement



# AI Readiness and Strategy: Unlocking Competitive Advantage



RAPID RESULTS FROM  
INITIAL COMMITMENT TO  
VALUE REALIZED.

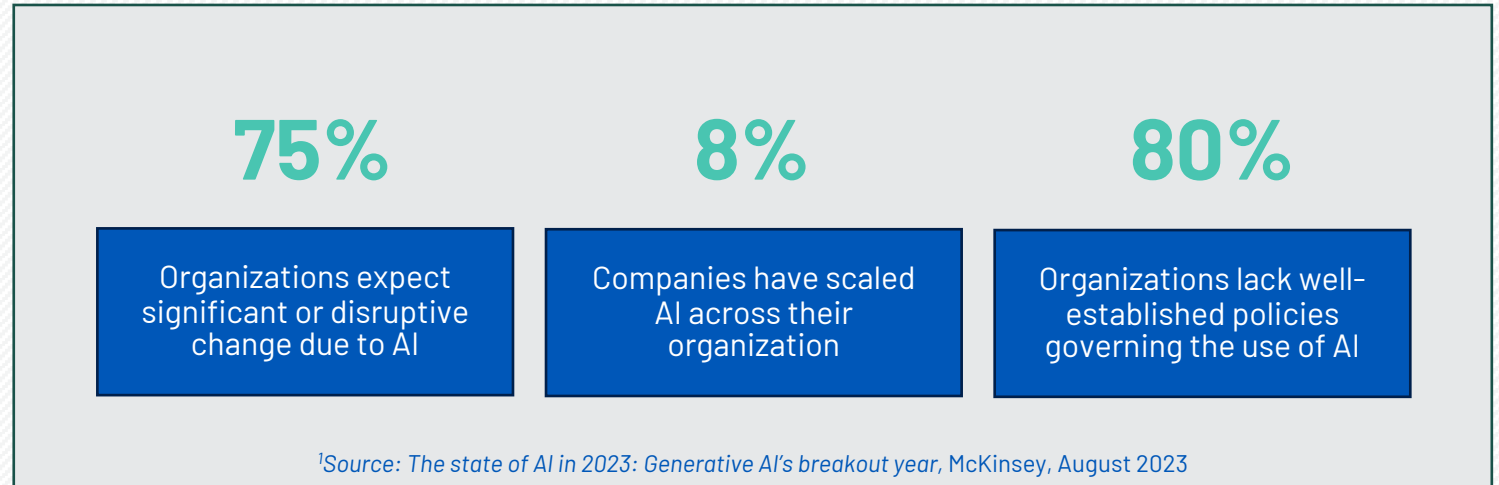


TRANSFORM YOUR  
BUSINESS WITH AI AND  
GAIN A COMPETITIVE  
EDGE. WITHUM GUIDES  
YOU THROUGH EVERY  
STEP.



# The AI Revolution: Are You Prepared?

Early and effective AI adoption is crucial for maintaining a competitive edge. Understand the potential and manage the risks.



- AI is transforming every industry and creating new opportunities and challenges for organizations of all sizes.
- Most organizations are not ready to harness the full potential of AI or to manage its risks effectively.
- Using Withum's proven approach, your business can develop an AI strategy and readiness plan essential to thrive in the AI era. It will also highlight the best practices and tools that can help businesses achieve their AI goals and overcome their AI challenges

# Your AI Transformation Partner – Our Approach

- **Art of the Possible**
  - Awareness and Understanding
  - Inspiring Innovation
- **Business Process Review**
  - Identifying AI Opportunities
  - Customized AI Strategy
- **Roadmap**
  - Strategic Planning
  - Continuous Improvement and Scaling
- **Ethical and Safety Recommendations**
  - Addressing AI Ethics
  - Risk Management



# AI the Right Way



A proven, step-by-step methodology for developing a responsible Microsoft Cloud AI strategy.



# Outcome and Benefits

## Tailored and personalized outcomes:

- **Development of a Tailored AI Strategy:** Creation of a comprehensive AI strategy specifically tailored to meet your organization's unique needs and challenges. This strategy encompasses a thorough assessment of potential AI opportunities, identifies key areas for AI integration, and outlines challenges that need to be addressed.
- **Strategic Roadmap and Implementation Plan:** Establishment of a detailed and actionable roadmap for the phased implementation and scaling of AI solutions within your organization. This roadmap includes specific timelines, milestones, and benchmarks for integrating AI into various business processes, ensuring a structured and efficient deployment.
- **Identification and Targeting of Key AI Initiatives:** Pinpointing critical AI initiatives that can significantly enhance operational efficiency, improve contract bidding success rates, and ensure regulatory compliance. Setting clear and measurable goals for each initiative to track progress and outcomes effectively.
- **Focus on Continuous Improvement and Ethical AI Use:** Emphasis on continuous evaluation and improvement of AI initiatives, ensuring they remain aligned with evolving business goals and market dynamics. Additionally, incorporating ethical considerations and risk management strategies to maintain responsible and compliant AI usage.

# Why Work with Us?

## **Technology Expertise:**

Withum specializes in technology-driven solutions, ensuring innovative and practical AI integration.

## **Customized AI Strategies:**

We provide tailored AI strategies that align with the specific needs and goals of each client.

## **Ethical AI Focus:**

Emphasis on ethical, transparent and accountable AI practices.

## **Proven Track Record:**

Withum has a history of successful AI implementations and positive client feedback.

## **Alignment with Business Goals:**

The approach ensures that AI initiatives support and enhance business objectives.

## **Experienced Team:**

Access to a team of professionals with deep knowledge in AI and current best practices.



## Call to action



Contact Chris Ertz

[certz@withum.com](mailto:certz@withum.com)  
(301) 272-6298



Check our insights

[Withum Digital Insights](#)



Visit our web site

<https://digital.withum.com>