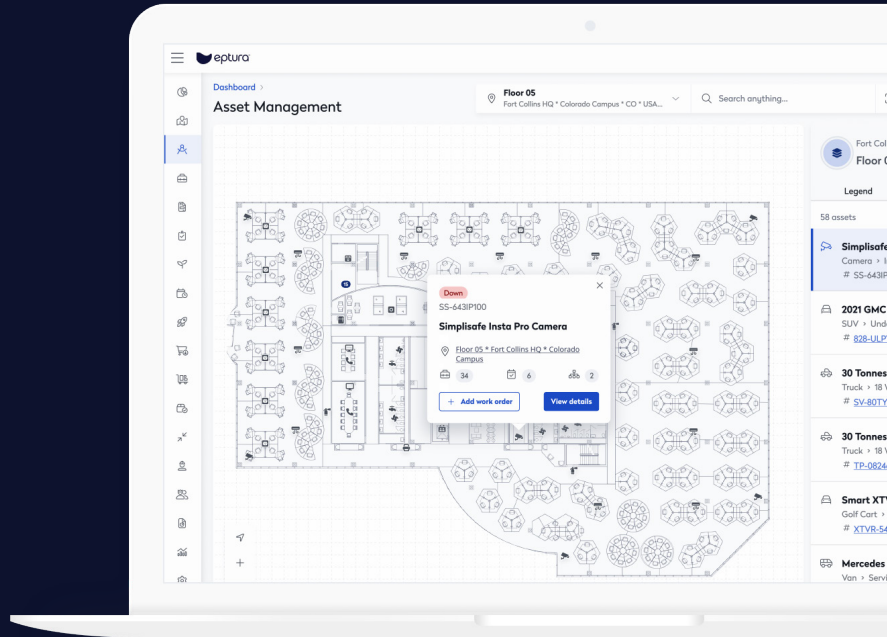




Eptura Asset

Manage the **lifecycle** of
workplace equipment.



Maximize workplace assets, meet regulatory standards, and enable your team's best work

Whether you're managing assets in an office, industrial site, or special purpose real estate, you need to keep your facilities running and your employees safe. If your equipment goes offline, your employees can't work to their full potential, and your business will be impacted.

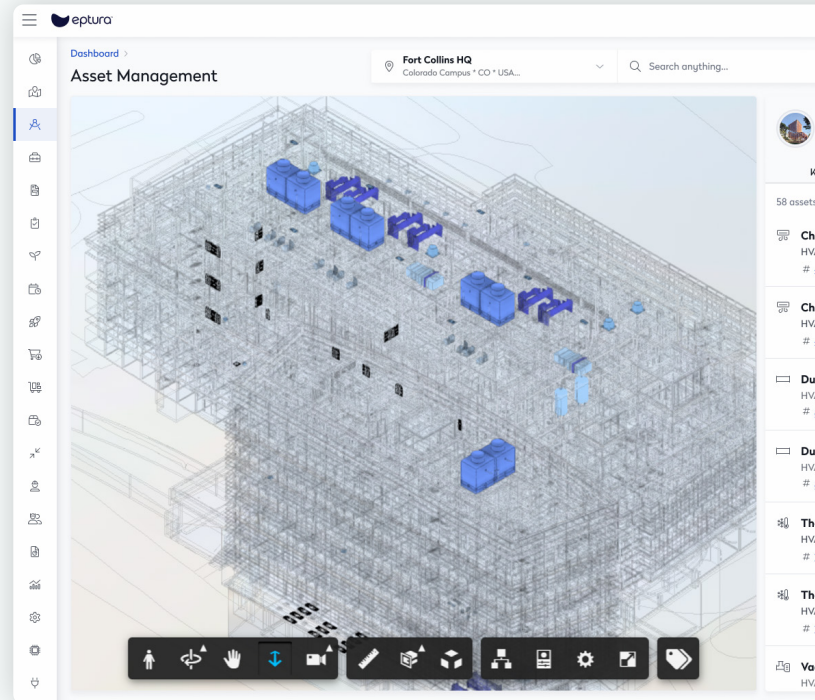
With Eptura Asset, you get full visibility into your assets, facilities, and parts inventory to keep your team moving forward. Automate maintenance schedules, require equipment inspections, document your compliance efforts, and manage work requests in a single portal, freeing up your technicians' time to focus on the tasks that drive your business.



I can manage my assets from **one location** with the click of a mouse.



Deliver preventive and reactive services at scale



Have clear insight into your equipment lifecycles

- Reduce operational overhead with a preventive maintenance plan that optimizes work toward critical needs.
- Generate and share detailed reports on how your budget is being spent, based on the KPIs that matter most to your organization.
- See where assets are located and plan your technicians' schedules according to priority, and where the assets are located.
- Visualize how equipment are connected to each other with 3D models, so you know how maintenance on one asset might affect others.



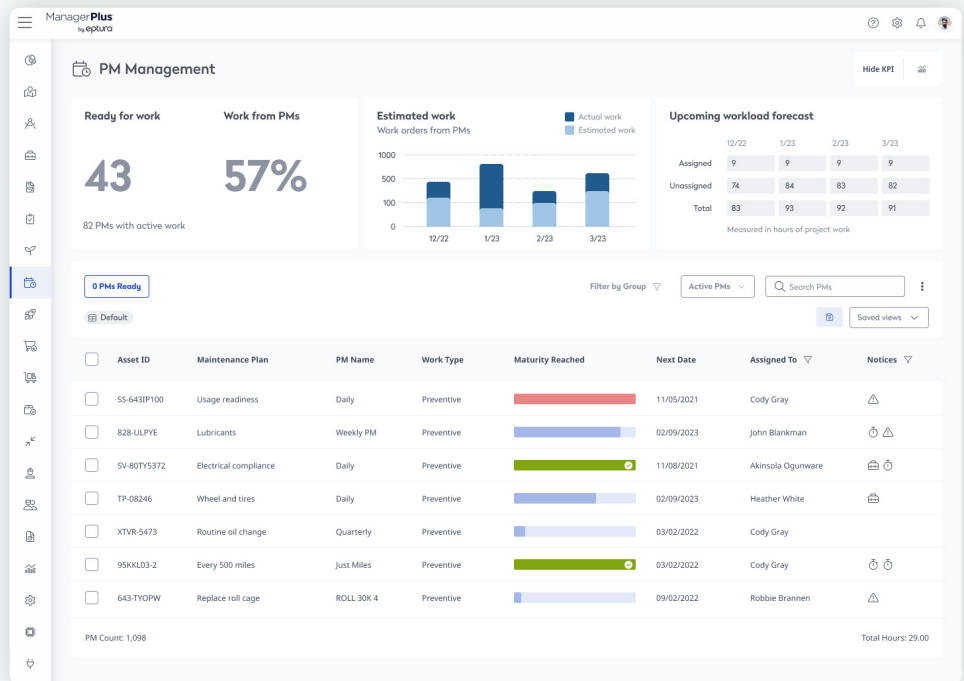
Stay ahead of regulatory standards and compliance

- Evaluate your buildings and equipment through mobile inspections that feed critical data to your maintenance system.
- Complete inspections before and after using heavy equipment, and automatically generate work orders for failures.



Determine what work **needs to be done**, what parts are needed, and who will do it

- Create and manage service requests, so maintenance is completed quickly, without disrupting the business.
- Generate, assign, track, and store work orders in one centralized digital space.
- Never worry about having the parts your team needs to complete a job.
- Assign work to vendors, track request status, and receive invoices and photos.



“Eptura allowed us to anticipate problems before they happened”



work your world™

Eptura is a global worktech company that provides software solutions for people, workplaces and assets to enable everyone to reach their full potential. Our scale and expertise helps organizations to engineer a thriving work environment, by giving them the understanding they need to enhance their employee experience, workspaces, and asset value.