

Azure Migrate Assessment

Discover the Opportunity to modernize your datacenter

Jim Richardson - CTO

Carey Neu – Azure Infrastructure Sr Architect



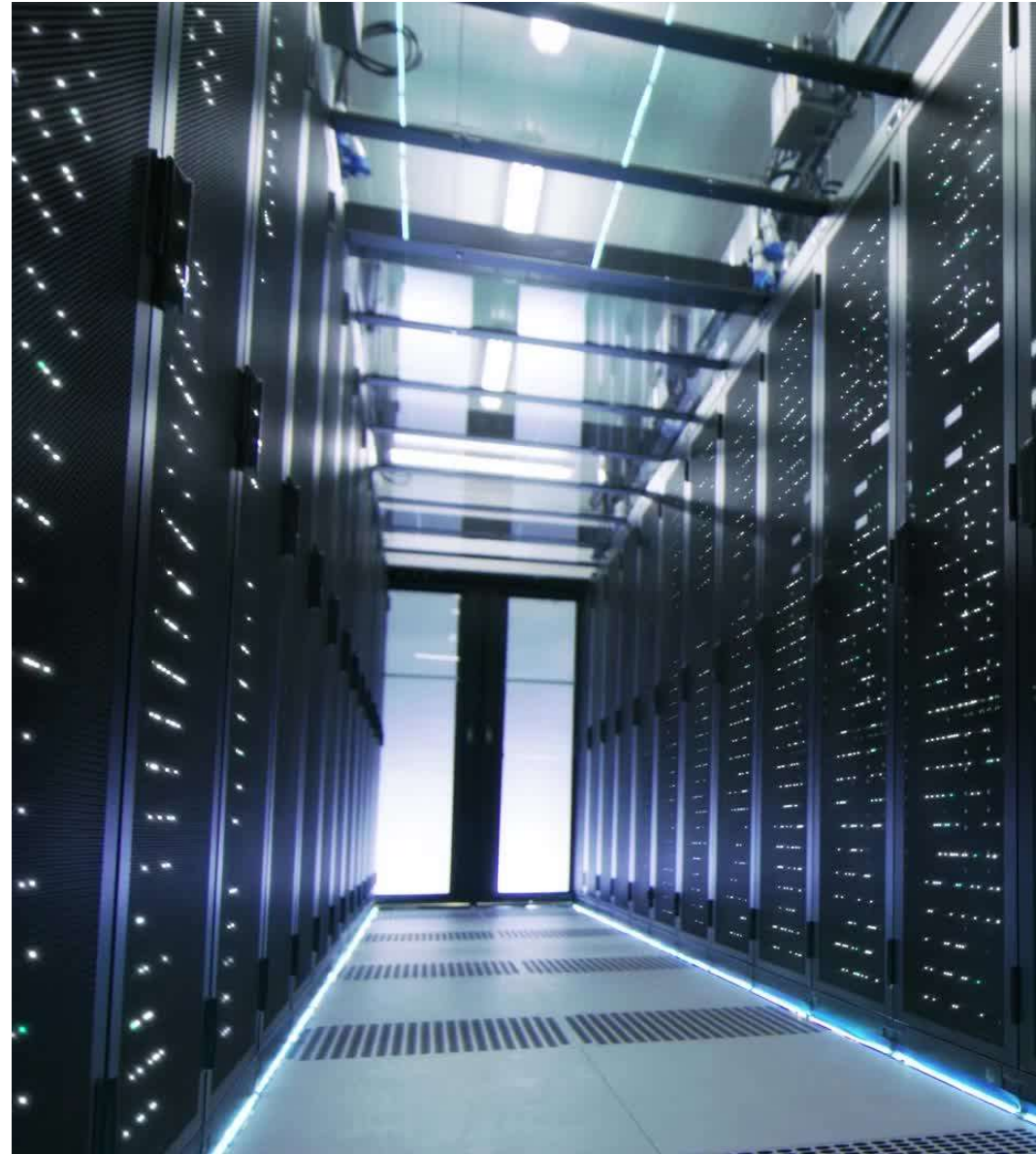
Slide 1

JRO [@Carey Neu] if you have any screenshot of azure migrate tool that would be cool
Jim Richardson, 2023-10-11T21:01:38.591

CNO 0 Sorry just saw this comment. Looks like you grabbed a couple.
Carey Neu, 2023-10-19T13:57:42.612

Do you still have physical infrastructure (Servers)?

- Servers in a rack in an office server room?
- Hyper-Converged hardware in a co-location facility?
- Needs care/feeding/Disaster Recovery/Backup
- Needs upgrades – hardware gets old and no longer supported
- Need to provide electricity, power, redundancy



Considering Transformation to Azure?

Azure simplifies Windows Server Deployment

Built-in DR

Simplified Management (backup, patching, monitoring)

Extended Security Updates for older OS

Cost Management capabilities to easily budget and predict Azure spend



How the Finchloom Azure Migrate Assessment Works

- Azure Migrate Appliance deployed
- Your current server environment is observed for 2-3 weeks (No data collection – only metrics)
- We review a report and make observations and recommendations
- We meet with you to review the recommendations
- We provide you with options to move to Azure including estimated pricing
 - Lift and Shift
 - Move to serverless
 - Move to platform

Azure Migrate in Azure Admin Console

Microsoft Azure | Search resources, services, and docs (15/10)

Home > Azure Migrate

Azure Migrate | Windows, Linux and SQL Server

Search (1/1/2)

Get started | Explore more

Migration goals

Windows, Linux and SQL Server

Assessment tools

Azure Migrate Discovery and assessment

Discovery | Dependency analysis (32 servers) | 11 nodes

Discovered servers: 32

OS distribution: Windows (14), Linux (18)

Storage: 2

Health status: 4

Services running SQL Server: 4

Assessments: 1

Application: 1

Dependency analysis progress: 32 servers, 11 nodes

Need step before your application grouping and dependency analysis is finished by your servers.

ADD new discovery tool (1/6/6) new

Migration tools

Azure Migrate Server Migration

Microsoft Azure | Search resources, services, and docs (15/10)

Home > Azure Migrate

Discovered servers

Summary (1/1/1)

Create group | Create assessment | Refresh | Report software inventory | Dependency analysis (32 servers) | Refresh | Columns

Apply Migrate appliance | Import based

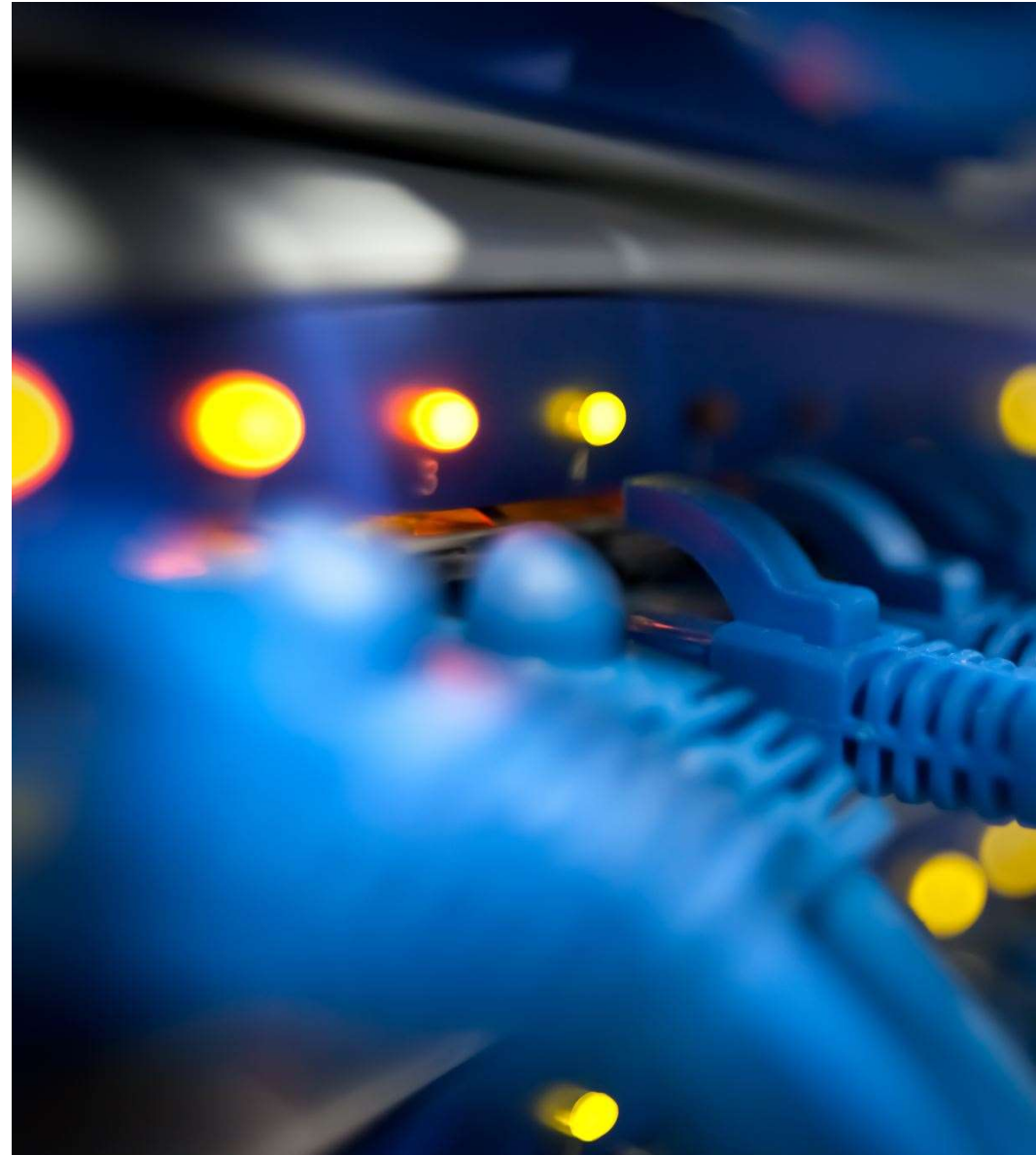
Application type | Appliance (All VMware)

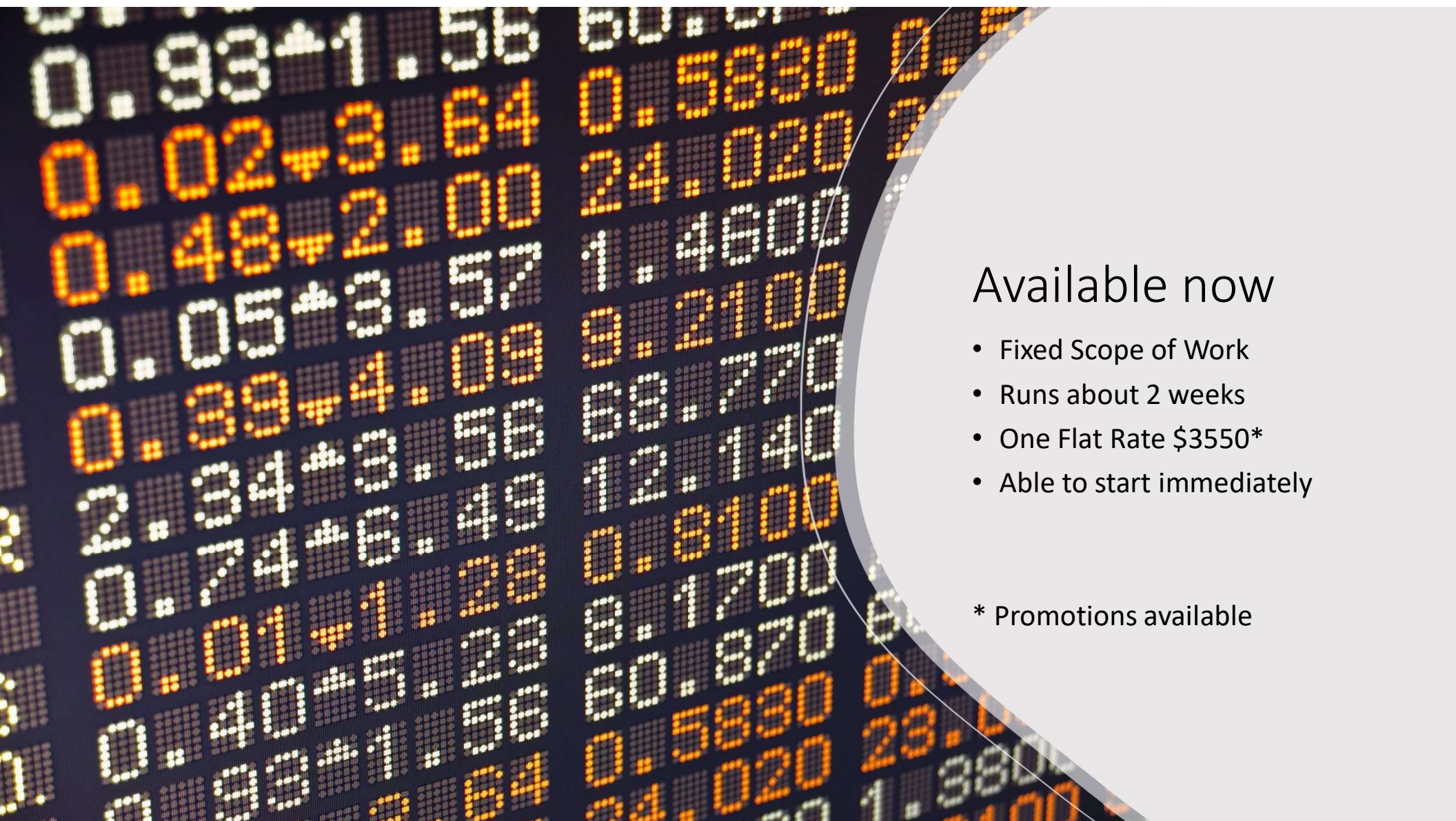
Search by filter icon

Name	IP address	Software inventory	Dependencies (Open)	SQL instance	Cms	Memory (MB)	Tags	Storage (GB)	Operating system	
SQLMS01-2		36 Applications	View Dependencies	0	0	2048	7	10.00	Red Hat Enterprise Linux	
SQLMS01MS-7	10.100.101.4000 (1/1)	View dependencies	View Dependencies	View Dependencies	0	4096	7	50.00	Microsoft Windows S...	
SQLMS01MS-3	10.100.101.140 (2/1)	46 Applications	View Dependencies	0	0	1024	7	10.00	Ubuntu	
SQLMS01MS-5	10.100.101.140 (1/1)	View dependencies	View Dependencies	View Dependencies	0	4096	7	40.00	Microsoft Windows S...	
SQLMS01-1		41 Applications	View Dependencies	0	0	1024	7	10.00	CentOS Linux	
SQLMS01-2		21 Applications	View Dependencies	0	0	2048	7	10.00	CentOS Linux	
SQLMS01-3	10.100.101.140	View dependencies	View Dependencies	View Dependencies	0	2048	7	10.00	CentOS 7 with no boot d...	
SQLMS01-4		37 Applications	View Dependencies	0	0	2048	7	10.00	CentOS Linux	
SQLMS01-5	10.100.101.140 (2/1)	23 Applications	View Dependencies	0	0	2048	7	10.00	Ubuntu Linux Server	
SQLMS01MS-2	10.100.101.140 (1/1)	37 Applications	View Dependencies	View Dependencies	View Dependencies	0	4096	7	50.00	Microsoft Windows S...
SQLMS01MS-4	10.100.101.140 (1/1)	View dependencies	View Dependencies	View Dependencies	View Dependencies	0	1024	7	10.00	Ubuntu Linux (64-bit)
SQLMS01-1		44 Applications	View Dependencies	0	0	2048	7	10.00	Oracle Linux Server	
SQLMS01-2	10.100.101.140	24 Applications	View Dependencies	0	0	2048	7	10.00	CentOS 7-mpx	

What you Get with Finchloom's Packaged Solution

- Estimated costs to run your environment in Azure
- Recommendations on correct sizing VMs in Azure
- Opportunities to get rid of servers
- Opportunities to reduce cost of Infrastructure management





Available now

- Fixed Scope of Work
- Runs about 2 weeks
- One Flat Rate \$3550*
- Able to start immediately

* Promotions available