



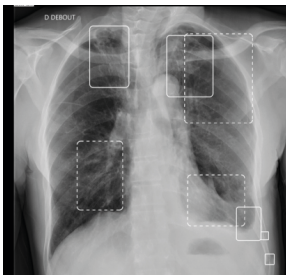
TEHCARE SOLUTIONS

MAKE RADIOLOGIST'S DAILY ROUTINE EASIER +

Productivity boost ; Streamlined interaction ; Time saved +

Our TechCare workflows are AI-powered solutions providing detections and measurements.

+ Designed and scaled for emergency, orthopedic and medical imaging departments, they will analyze x-rays images, detect a range of pathologies, and suggest anatomical measurements for targeted examination.



PATHOLOGY DETECTION

Prioritization, segmentation, and diagnostic assistance. They allow the real-time detection of multiple families of msk and chest pathologies for both adults and children: fractures, dislocations, joint and pleural effusions, pneumothorax, opacities, and pulmonary nodules.

ORTHOPEDIC MEASUREMENTS

Patented since 2020, our solutions **fully automate more than thirty musculoskeletal measurements** by using artificial intelligence: foot, goniometry, pelvis, shoulder, teleradiography and full body.



MILVUE'S FEATURES

VERSION 2.1

Detection Category

- Appendicular skeleton fracture,
- Elbow joint effusion,
- Joint dislocation,
- Pleural effusion,
- Pneumothorax,
- Pulmonary nodule,
- Pulmonary opacity,
- Rib cage fracture.

Anatomical Measurement Category

- Anterior center-edge angle (VCA),
- Bone age,
- Calcaneus slope,
- Cervico Diaphyseal Angle CC'D,
- Cobb angle,
- Coronal Vertical Axis (C7-CSL) (CVA),
- Critical shoulder angle (CSA),
- Djian-Annonier angle,
- Femoral offset,
- Femur length,
- First metatarsal slope,
- Flessum/recurvatum angle,
- Frontal Pelvic Asymmetry,
- Gravity line,

- Hip-knee-ankle angle (HKA),
- Kyphosis T1/T12,
- Leg length,
- Lordosis L1/S1,
- Meary-Tomeno angle,
- M1-M2 angle,
- M1-M5 angle,
- M1-P1 angle,
- Pelvic incidence,
- Pelvic tilt,
- P1-P2 angle,
- Sacral slope,
- Sagittal Vertical Axis (SVA),
- Tibia length,
- Tönnis angle (HTE),
- T9 spinopelvic angle,
- Wiberg Angle (VCE).

+ +
+ +
+ +
+ +
+ +

My Tech Care

For your specific needs, build your tailor-made solution !

Select from our features those that perfectly meet your requirements and create your

100% dedicated personalized solution.

TechCare solutions are specific configurations of the Smart Urgence and Smart Expert modules included in the Milvue Suite. The Milvue Suite software, developed by the Milvue company, is a Class Ila medical device within the meaning of EU Regulation MDR 2017/745 - Notified Body: BSI, CE 2797.

Our Tech Care packs

Discover our packs: TechCare Alert, Bones, Chest, Spine et Kids.



Tech Care Alert

TECHNOLOGY FOR LIFE.

The AI solution dedicated to emergency X-rays, 24/7, instantly detects even the most minute anomalies of the skeletal bone as well as the lung. For the patient, the result is safer, smoother treatment.

8 FEATURES INCLUDED
Appendicular skeleton fracture | Elbow joint effusion | Joint dislocation | Pleural effusion | Pneumothorax | Ribs cage fracture | ...




Tech Care Bones

TECHNOLOGY FOR MSK MEASUREMENTS.

The AI solution dedicated to MSK radiographs identifies traumatic bone lesions and provides a detailed analysis of orthopaedic assessments thanks to the automation of measurements.

22 FEATURES INCLUDED
Calcaneus slope | Cervico-diaphyseal angle (CC'D) | Djian-Annonier angle | Femur length | Meary-Tomeno angle | Pelvic tilt | Tibia length | ...




Tech Care Chest

TECHNOLOGICAL EXCELLENCE COMBINED WITH THE RIGOR OF THORACIC RADIOLOGY.

The AI solution, dedicated for thoracic X-rays, accurately analyzes pulmonary anomalies and supports radiologists by providing in-depth, visually verifiable analyses.

4 FEATURES INCLUDED
Pleural effusion | Pneumothorax | Pulmonary opacity | Pulmonary nodule.




Scan me

SCIENTIFIC PUBLICATION | Academic Radiology, July 2023

The only comparative study - between 3 AI solutions - published to date on fractures.

Artificial Intelligence for Detecting Acute Fractures in Patients Admitted to an Emergency Department: Real-Life Performance of Three Commercial Algorithms.

Bousson V | Attané G | Benoist N | Perronne L | Diallo A | Hadid-Beurrier L | Martin E | Hamzi L | Depil Duval A | Revue E | Vicaut E | Salvat C.

+ + + +



Tech Care Spine

INNOVATION FOR SPINE EXPERTS.

The AI solution, dedicated to spinal x-rays and adapted to EOS imaging, is the ideal solution for radiologists and orthopedic surgeons, allowing major time and productivity savings.

7 FEATURED INCLUDED

Cobb angle | Coronal Vertical Axis (C7-CSL) | Gravity line | Kyphosis T1/T12 | Lordosis L1/S1 | Sagittal Vertical Axis (SVA) | T9 spinopelvic angle.



Tech Care Kids

THE TECHNOLOGY THAT TAKES CARE OF OUR CHILDREN.

The dedicated AI solution for pediatric radiography, detection and measurements, ensuring a fast and safe care for children and their families.

30 FEATURES INCLUDED

Appendicular skeleton fracture | Bone age | Critical Shoulder Angle (CSA) | Elbow joint effusion | Kyphosis T1/T12 | Pulmonary nodule | ...



MILVUE

CERTIFIED



HappyIndex® Clients

WE ARE HAPPY CLIENTS CERTIFIED!

Chosen in the Top 5 of companies with the best customer relationship and satisfaction.

Our overall rating of 4.4/5 demonstrates the exceptional satisfaction of our clients and partners with our solutions and services.

95.5% of them recommend us. This recognition motivates us to continue providing ever more innovative solutions and excellent customer service based on trust and transparency.

CONTACT US

 [@milvue](#)

 [milvue.com](#)

 contact@milvue.com

You too can show us your satisfaction by leaving us a review on Google :



My Google review