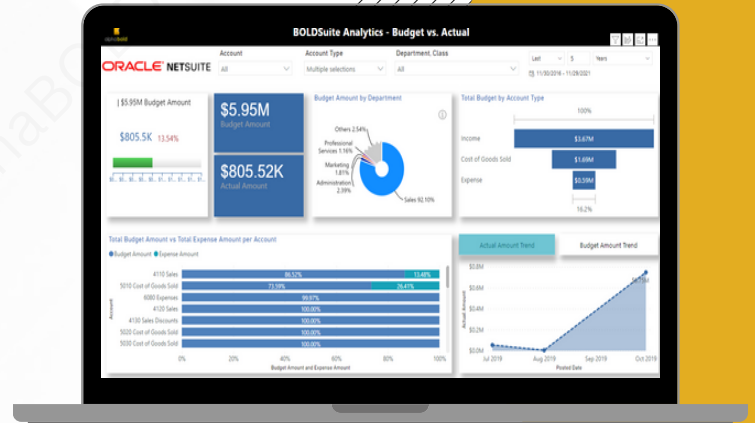


# BOLDSuite Analytics



## Key Features

- REST-based NetSuite connection.
- Token-based authentication.
- Proficient handling of large datasets.
- Efficient data pulling from Workbook Analytics.
- Power BI reporting and visualization capabilities.
- Built-in dashboards tailored for common business use cases.
- Fully equipped for self-service BI, allowing for custom reports and visualizations.
- No additional NetSuite license required for sharing data with external organizations.
- Supports incremental refresh for up-to-date data synchronization.
- Features built-in Snapshot capability, enabling capturing of the business's current state without additional tools.
- Does not require SuiteAnalytics Connect for integration or functionality.