



Peloton WRMS is well performance analytics on the Peloton Platform, combining historical data and reliability analyses with advanced modelling and simulations. The system provides accurate prediction of expected OPEX and enables a performance-based approach to well maintenance and well interventions planning for onshore and offshore assets.

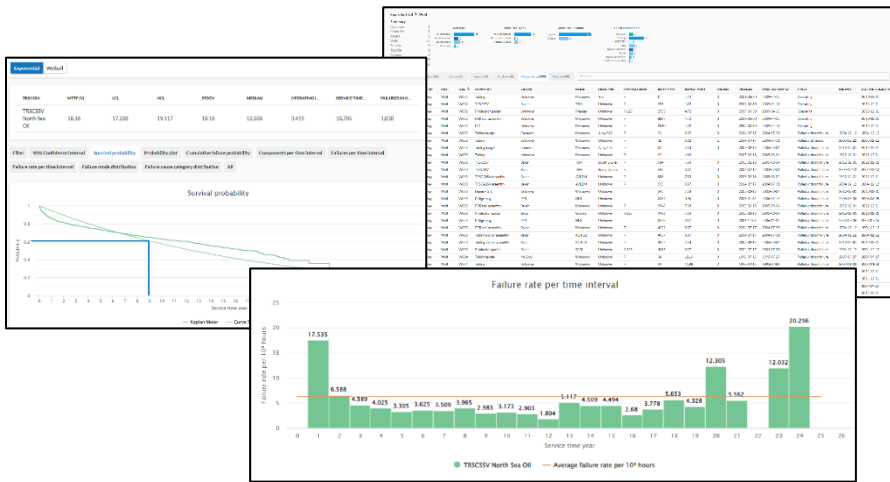
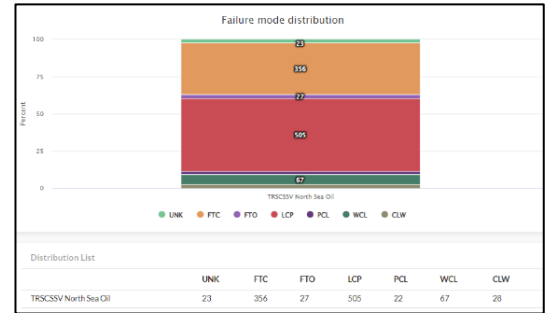
Well performance analysis and benchmarking

Analytics for Better Decisions

Improve your decision basis by quantifying the operational history and performance of wells. WRMS is applied through the full well lifecycle, from developing better well designs, to risk assessments, well integrity analysis, and remaining equipment and well life assessments.

Highlights

- View benchmarks for components selection and well configuration alternatives
- Minimize well downtime
- Optimize well maintenance planning related to OPEX and well availability
- Determine benchmarks for well equipment performance across your assets and well types
- Evaluate well barrier elements with respect to well integrity performance



Overview of Wells and Data

Users can browse through their own company's data across all assets and wells, down to individual equipment types for a given well type, easily identifying failure history for fields, wells, and well component types. Various reports can be downloaded for export.



Industry Dastabase and Global Benchmarking

The WRMS database contains well equipment and failure data collected during the last 30 years. WRMS allows for benchmarking against the anonymized shared industry data in the database.

- 6 000 wells
- 70 000 components
- 6 500 failures
- 35 operators, 335 assets in 25 countries

PELTON WRMS

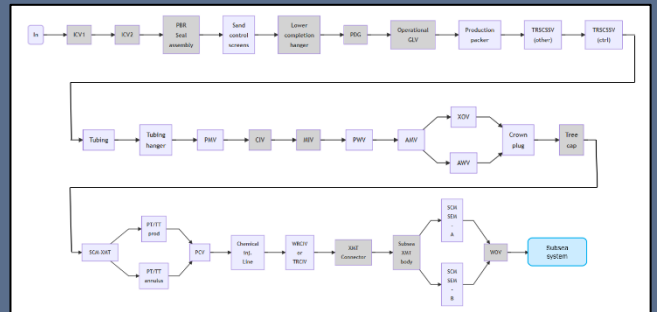
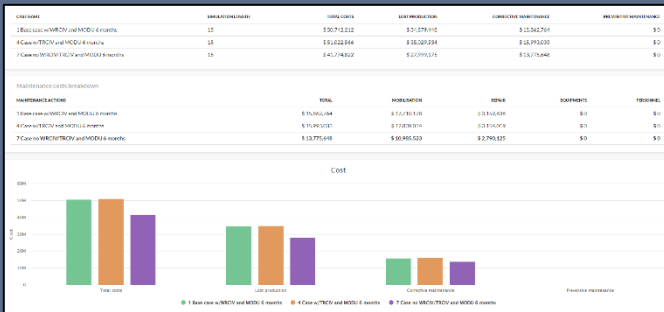
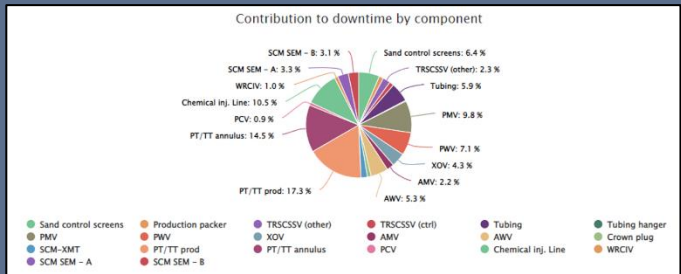
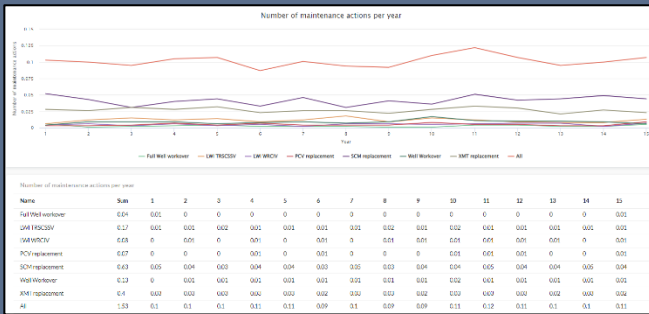
Do you make use of your well experience data?

Use your past experience to support future well operation decisions. In Peloton WRMS your well equipment and failure data are structured and available whenever required. Stop running on gut feeling and start improving the way you plan and operate your most valuable assets—the wells.

Well Life Simulation

Identify downtime drivers and optimize well maintenance with the WRMS Simulator!

The WRMS Simulator utilizes well equipment reliability data to simulate maintenance scenarios and predict the expected downtime and interventions for wells. This simulation allows oil & gas operators to evaluate well designs, see the effect of change on corrective and preventative maintenance plans, as well as identify cost, deferred production, downtime drivers, and more.



Ease of Use

- Intuitive interface made for all well professionals
- WRMS taxonomy model with reference to ISO 14224

Integration

- Analysis of your WellView-captured equipment failures
- Web API and templates for data uploading available