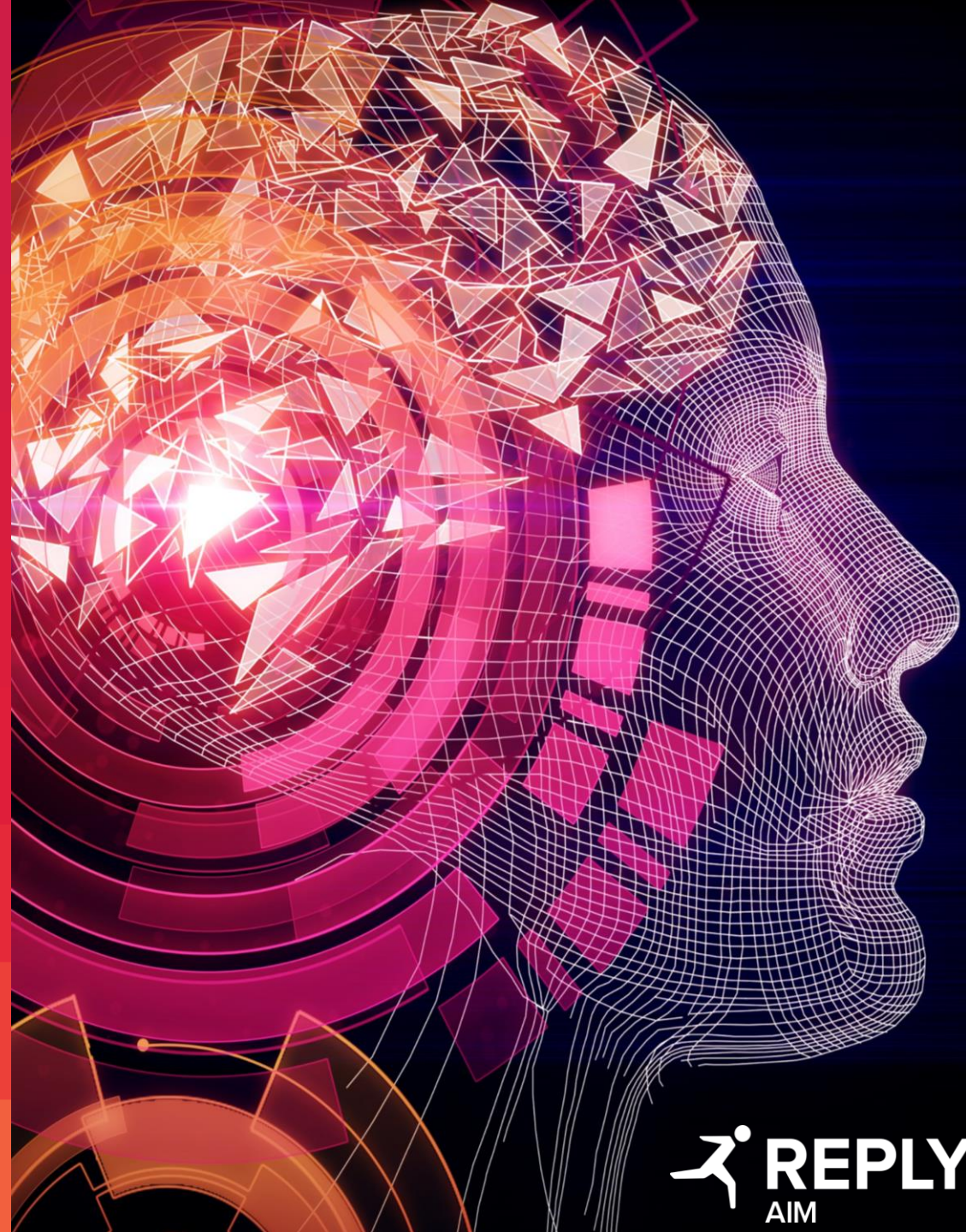


# EXECUTIVE NAVIGATOR, POWERED BY GENAI

Solution Overview

3rd January 2024



# PROBLEM STATEMENT

*Executives can receive up to 200 emails per day, leading to decision fatigue* – McKinsey & Company

*Only 30% of executives allocate time for strategy and new org skills, despite the rapid pace of change in the business environment.* – World Economic Forum



# EXECUTIVE SUMMARY

## CATALYSING EXECUTIVE ACTION WITH AI

### DESCRIPTION

Unveiling the Executive Navigator, a pioneering platform transcending traditional boundaries to not only inform but catalyse actionable insights for today's top-tier leaders. Seamlessly integrating AI to automate mundane tasks, expedite data access, and initiate workflows, revolutionizing executive task management and decision-making processes.

### BUSINESS VALUE – Why use AI/GenAI?

Three Main Pillars:

| **Personal Navigator** | **Business Automation** | **Real-Time Insights** |

Key Benefits include:

- **Task Efficiency:** Streamlines tasks for strategic focus.
- **Business Automation:** Automates critical functions for informed **decisions**.
- **Real-Time Insights:** Immediate data access for informed decisions.
- **Agile Workflows:** Customized workflow initiation via voice or text.

 Data Driven Executive Decisions

### TARGET

- CEO
- CFO
- C Suite including Chief Supply Chain Officer, Chief Operation Officer
- Global/ Regional Business Leaders



# UNVEILING THE EXECUTIVE NAVIGATOR

## FROM PASSIVE INSIGHT CONSUMPTION TO PROACTIVE ACTION INITIATION

### Personal Navigator

Effortlessly initiate and manage tasks in your familiar Microsoft ecosystem. For instance, it can automatically generate a meeting summary in Teams, distribute action items via Outlook, schedule follow-up meetings, and update project timelines.

M365 Office Suite

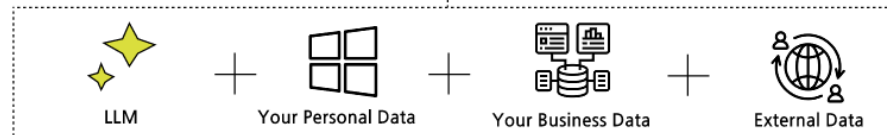
### Business Functions Navigator

Automates key business functions in HR, Supply Chain, Finance, and Sales. For example, it auto-triggers inventory audits based on supply chain data or initiates performance reviews using HR metrics, streamlining executive decision-making.



### External Business Navigator

Real-time sync with external data such as Bloomberg, BBC, and patent databases. Auto-triggers workflows for risk assessment or competitive analysis based on live events, ensuring timely and informed executive decisions.



# TECH STACK – MICROSOFT BASED

<b>Azure OpenAI</b>	Facilitates natural language queries and provides real-time natural language commentary. Maintained by Microsoft, OpenAI has no access to the data ensuring data privacy.
<b>Microsoft Azure</b>	<ul style="list-style-type: none"><li>• <b>Azure Data Factory:</b> Data integration service used to extract data from various sources, transform it, and load it into a destination.</li><li>• <b>Azure Blob Storage:</b> Cloud storage solution for unstructured data; to be used as a destination for data extracted and transformed by ADF.</li><li>• <b>Azure Cognitive Search:</b> Allows to ingest, enrich, and index data from various sources. With its powerful natural language processing capabilities, it can understand user intent and provide more relevant search results.</li></ul>
<b>Power Platform</b>	<ul style="list-style-type: none"><li>• <b>Power Pages:</b> Allows users to create and publish low-code websites and portals. Can be used to create a user interface for displaying and hosting data from various sources, including Power BI reports and dashboards.</li><li>• <b>Power BI:</b> A business analytics service by Microsoft that provides interactive visualizations and business intelligence capabilities.</li></ul>



# AI INJECTIONS ACROSS THE EXECUTIVE NAVIGATOR

<b>Predictive capabilities</b>	<ul style="list-style-type: none"><li>• Future prediction of Key Business KPIs included in the Business navigator enabled by Data science and Machine Learning</li><li>• A recommendation engine for the next best actions</li></ul>
<b>Azure OpenAI / LLM integration</b>	<ul style="list-style-type: none"><li>• Enable executives to prompt the data behind the Navigator with natural language – results back could be one of 2: either a sentence back or a small new dashboard created.</li><li>• Enable executives to launch a workflow/ action via the Navigator, launched using natural language</li></ul>
<b>Generative AI / NLG</b>	<ul style="list-style-type: none"><li>• Add natural language commentary (short sentences) to events within the Navigator in real-time</li></ul>



# EXECUTIVE NAVIGATOR FRONT-END

Welcome to your Executive Navigator: Your Daily Summary

## Your day in brief

Let's dive into your inbox! Today, you have:



26 unread emails



7 pending meeting invites



4 flagged emails

Coming up:

14:00-14:30PM Team Catch-Up			
15:00-16:00PM Sales Presentation			
16:30-17:00PM Performance Review			

Recently:

10:00-11:00AM Client Presentation			
11:30-12:00PM Debrief & Next Steps			
12:00-13:00PM Campaign Planning			

Pick up where you left off

M365 Office Suite

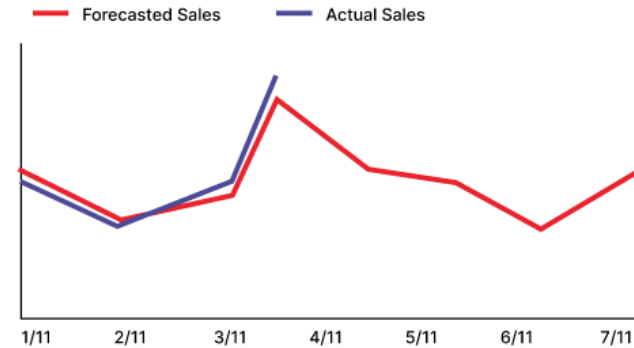
## Key Business Metrics Today

Total Orders Today

867

Next Day Sales: -8.76%

Next Day Orders: -2.48%



## Today's World in brief

Today's Highlights from the Industry

[ABC's Shares Sold by Private Advisory Group](#)

[Major Merger: Green Solutions Combine](#)

[BigData Innovations Transforming Analytic...](#)

[EnviroSynergy's Stock Surges Amid Strikes...](#)



Industrial Action in France might affect inventory levels

Navigator



What are the action items from this meeting? When is my next meeting with person?

What are the key influencers for sales? When will I need to place a restock order for product?

How does world event impact sales? What is the latest deal made by competitor?



Ask me anything...



# GENAI STRATEGIC READINESS

## Tech & Data – The Backbone

- Target GenAI architecture; systems; apps
- Data sources: systems, docs, external
- LLM/s evaluation and selection
- Business capabilities and use cases

## Responsible GenAI

- Ethical Frameworks; Bias Mitigation
- Outputs Reliability; Hallucinations
- Privacy (IIP, GDPR, etc); Security; Intel. Property
- Persona Guardrails
- AI Governance

## Business Benefits



Quantification  
of ROI

Contribution to  
Strategy Execution

Business KPIs  
Impacted

## Services

Pre-Deployment	Deployment	Post-Deployment
<ul style="list-style-type: none"> <li>• Technical Proof of Concepts</li> <li>• GenAI Consulting &amp; Advisory</li> <li>• Business Case articulation</li> <li>• GenAI Roadmap Definition</li> </ul>	<ul style="list-style-type: none"> <li>• GenAI execution methodology</li> <li>• Deployment of AI platforms &amp; Use Cases</li> <li>• Adoption and change Management</li> <li>• Strong Governance</li> <li>• LLMOps</li> </ul>	<ul style="list-style-type: none"> <li>• GenAI RUN services</li> <li>• GenAI optimisation</li> <li>• Fine Tuning</li> <li>• Prompt engineering</li> <li>• Training</li> <li>• New LLM/ GenAI integration</li> <li>• Release management</li> </ul>





# **CASE STUDY DAY IN THE LIFE OF AN EXECUTIVE**



# DAY IN THE LIFE

## SUPPLY CHAIN

Meet our Chief Supply Chain Operations Officer, a driving force behind a globally renowned multi-billion-dollar company, steering a diverse portfolio of consumer brands.



The **Business Navigator** dives into action, analysing the implications.



The inventory alert triggers the activation of the **Personal Navigator**, advising our Chief to set up an immediate call with the Head of Production along with possible solutions.



The **External Navigator** alerts him about an unforeseen disruption in global shipping routes, particularly impacting imports from key suppliers.



An alert surfaces through the **Business Navigator**, highlighting the potential decrease in imports and its direct impact on inventory levels.



# DAY IN THE LIFE

## TECH CONSULTING

Meet our CEO of a leading a billion-dollar company specializing in consulting, innovative technologies and digital services.

The **Business Navigator** suggests including a dedicated section on regulatory compliance, ensuring that ongoing projects align seamlessly with the evolving regulatory landscape.

By incorporating regulatory compliance into the project plan and prioritizing a meeting with the project team, the company is strategically aligned with evolving industry regulations, ensuring continued success and resilience in the dynamic tech landscape.



The **External Navigator** identifies a critical regulatory change that could significantly impact a client's industry.

The **Personal Navigator** recommends prioritizing a meeting with the project team to ensure alignment with the new regulatory priorities.



**THANK YOU**

