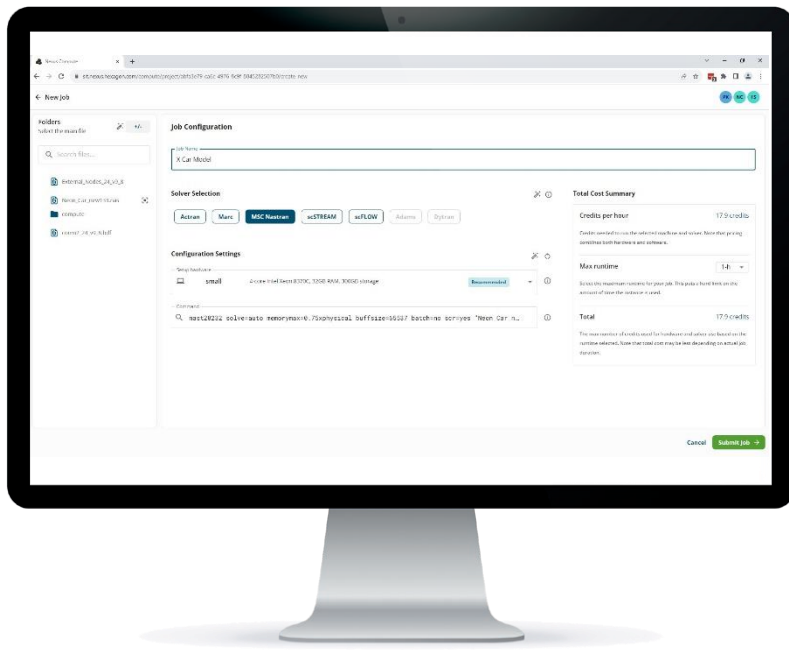


Nexus Compute

Unleash Simulation Potential with Cloud-Powered CAE Solvers



Nexus Compute is a platform available to consume Software as a Service (SaaS) that provides engineers the ability to execute any number of simulations concurrently without the limitation of software licenses or hardware availability. It currently supports execution of MSC Nastran, Marc, Actran, and Cradle (scFLOW and scSTREAM)/

With **Nexus Compute**, engineers will have immediate access to the solvers and best-optimized HPC configuration to run simulations today. Just log into Nexus, purchase Nexus Credit as low as \$5,000, and be ready to accelerate design and engineering.

Nexus Compute is best utilized for:

- 1) engineers and engineering departments who see a seasonal "bursting" need to run solvers to meet the design and engineering challenges
- 2) small and medium-sized businesses encountering the obstacle of substantial initial investments in software licenses and HPC infrastructure
- 3) large multinational corporations with distributed engineering teams across the globe

Value

- Immediate access to the high-performance computer (HPC) without heavy capital expenditure
- Consumption-based payment, no high upfront cost of ownership
- No software license or hardware needed
- Supports execution of MSC Nastran, Marc, Actran, Cradle (scFLOW, scSTREAM)
- Scalable service and parallel execution
- Ideal for urgency and fluctuating demands
- No more memory or disk space limitation concern

Nexus is an open platform enabling digital engineering and manufacturing collaboration by connecting people, technologies, and data, accelerating innovation and time to market.

Scalable cloud-based compute capability for product designers and engineers

Simple Value-Based Pricing – Our offer is simple. You only pay for your simulation needs. There is a single price for hardware, operations, and software, provided by Nexus Credit. Nexus Credit is valid for one year from the purchase date and there is no limit for additional credits at any time.

SaaS – It's a clean SaaS offering with no complex entitlement nor ties to perpetual software licensing

Lower Barrier to Entry – Nexus Credit can be purchased as low as \$5,000 for immediate access to the best configured HPC and software for your simulation needs

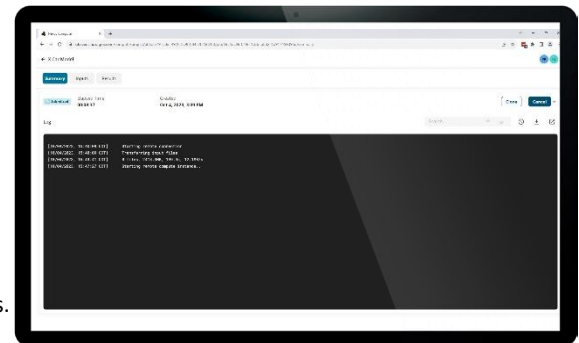
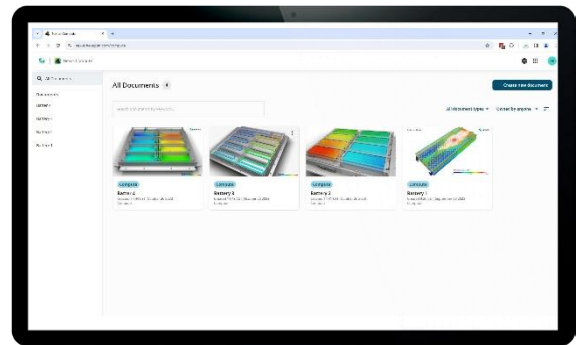
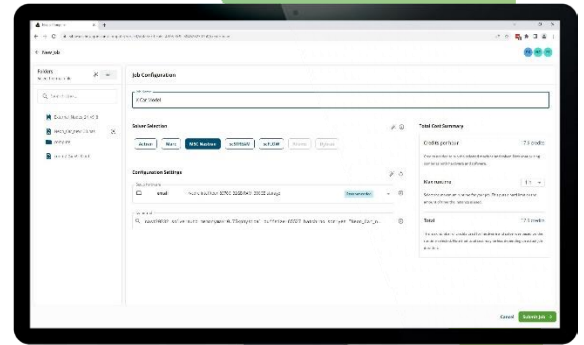
Easily Accessible – All you need is an Internet connection and the purchase of Nexus Credit to accelerate your simulation runs today

Simultaneous Simulations – Request as many jobs simultaneously as you'd like to overcome your design and engineering hurdles

Share Globally – Share projects and documentation with your team and team members globally

Integrated Intelligence – Enjoy the convenience of automatic instant configurations, pre-populated command lines to minimize simulation runtime, all while staying cost-effective

Performance Improvement and Scalability – During the initial phase of Nexus Compute's pilot program, we received a substantial amount of positive feedback from the early adopters. They reported significant improvements, with some experiencing 8x, 10x, or even greater performance enhancements compared to their conventional desktop setups. These improvements were instrumental in helping them meet their time-to-market requirements



Compute

Try out the app on the Nexus Portal

nexus.hexagon.com/home/product/nexus-compute/