



A Women Owned/Women Led Company

Copilot for Microsoft 365 Flight Plan: Check-in Envisioning and Advisory Workshop



Infrastructure Azure
Data & AI Azure
Digital & App Innovation Azure
Modern Work
Security

The Problem

Copilot for Microsoft 365 is a whole new way to work thanks to the integration of AI into our normal business tasks that allow us to be more productive and bring forth new insights from the documents we interact with. These new capabilities also bring challenges to adoption, security, and compliance within our environments.

Organizations may find it difficult to maintain consistent controls and policies for interacting with Copilot for Microsoft 365 and never realize the potential benefits without introducing significant risk. The issues are around how to:

- Maximizing the business value of Copilot for Microsoft 365
- Handling increased data compliance and security risks
- Setting boundaries and policies for usage
- Steering innovation and integrations with copilot
- Monitoring data access and exfiltration



The Solution

Spyglass's **Copilot for Microsoft 365 Check-in (Envisioning and Advisory session)** is focused on achieving two things: Discovering the "Art of the Possible" and starting to think about the controls needed to protect data and users.

- **Discovering the "Art of the Possible"**

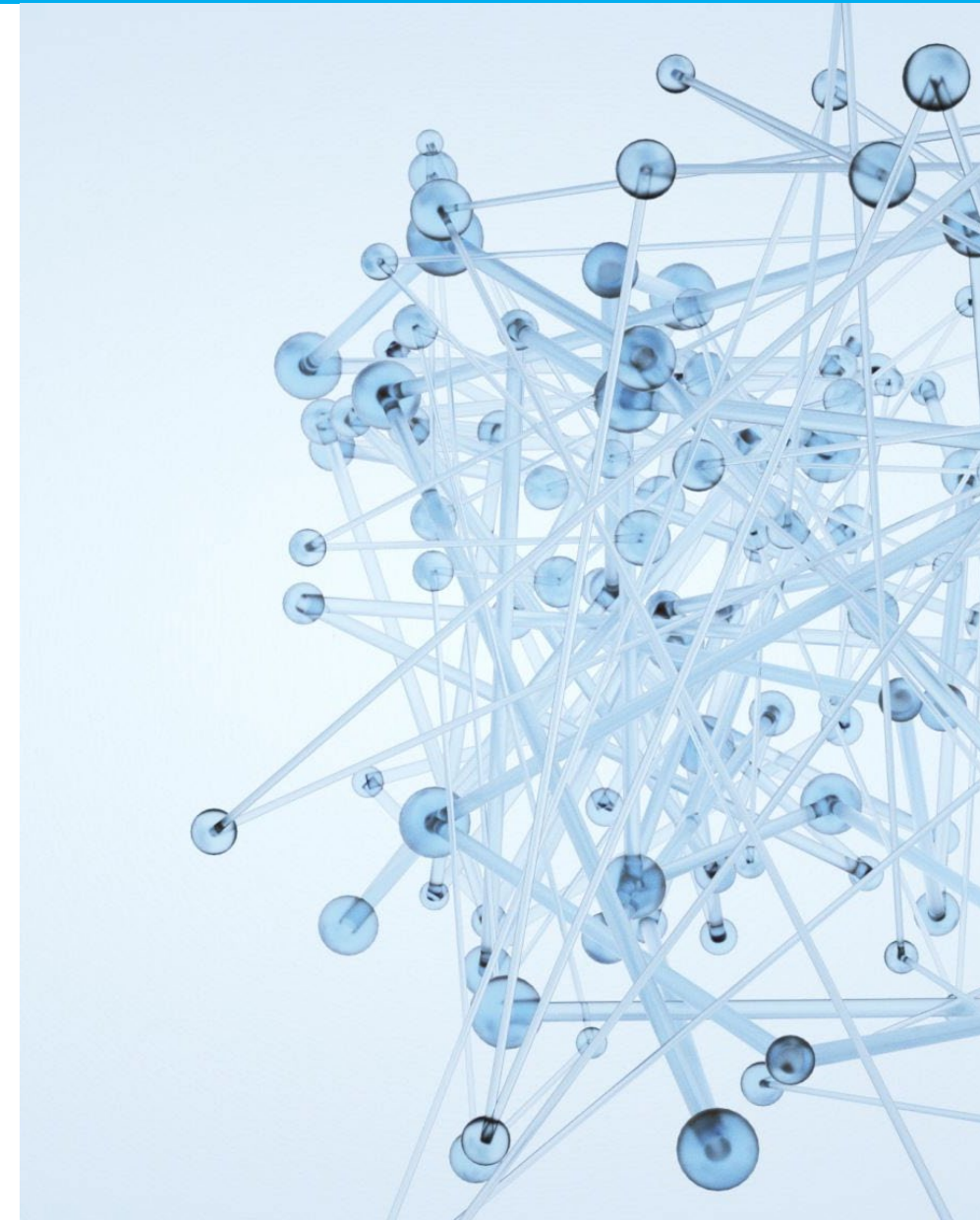
- Walk through all of the amazing benefits and integrations that are possible with the Copilot for Microsoft 365 solution and how users can leverage the capabilities across the organization.

- **Review of Required Controls**

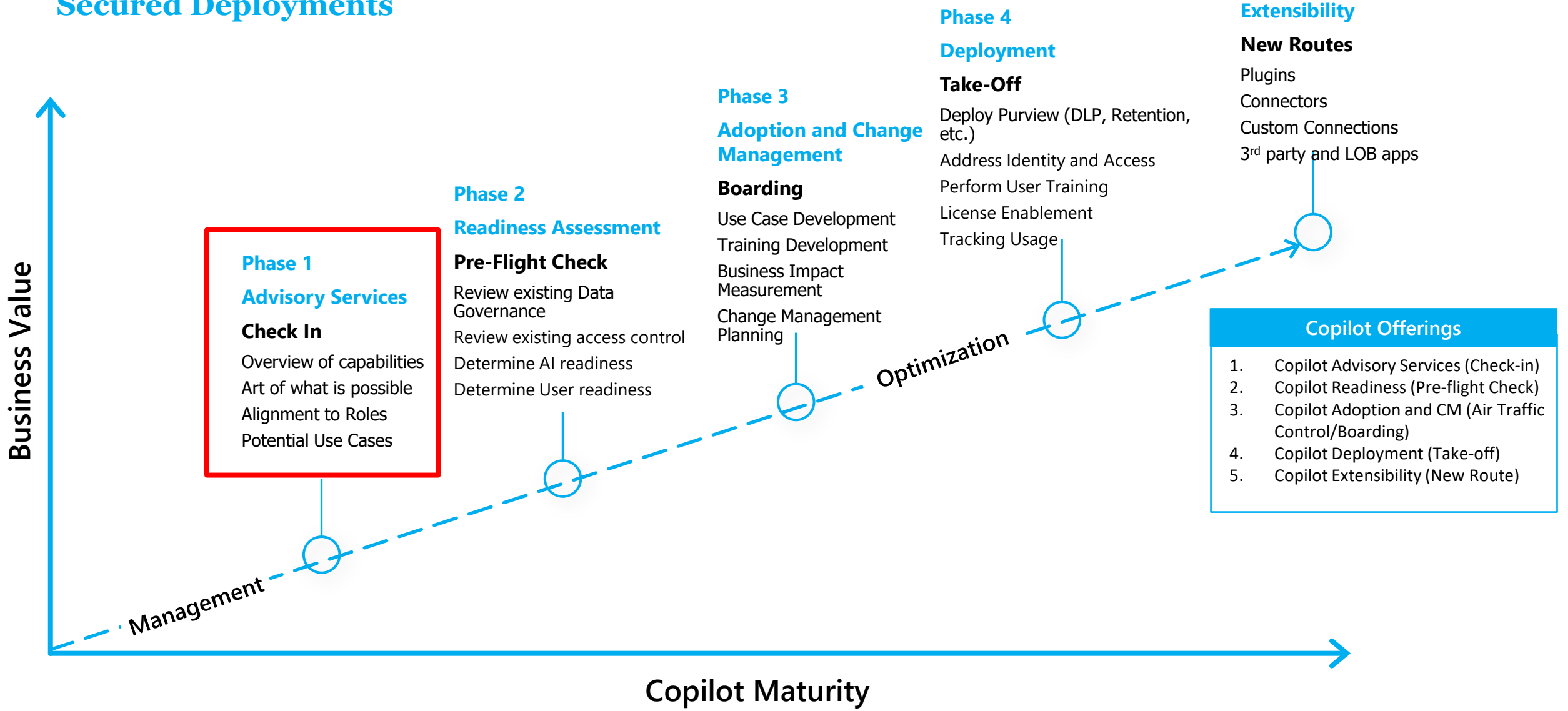
- Dive into the necessary security and compliance controls that will be needed in the adoption of Copilot for Microsoft 365.
- Summary of key solutions like Purview, Entra, Intune, and other Microsoft technologies that will help to reduce risk and increase the ability to remain compliant with your data.
- Focus on the licenses that are already owned.

Final Deliverables

- Slides from Presentation
- Summary Document



Copilot for Microsoft 365 Flight Plan to Secured Deployments



Phase 1: Copilot for Microsoft 365 Check-In (Envisioning)

- Overview of Copilot:
 - How does Copilot work?
 - Who has access to Copilot?
 - What can I do with Copilot?
- Review how users currently work
 - Identify key personas, high value use cases and potential business impact
 - What are some current struggles for employees?
- Discuss the Art of the Possible
 - What are some potential use cases for Copilot?
 - How could Copilot help with some of the struggles people have.
- Data Governance
 - Define how data governance is configured today.
 - Identify areas of focus as Copilot is brought into the environment.
 - Identify areas of improvement for access control.
- Whiteboard Roadmap to prepare for Copilot and Next Steps





Thank You

info@spyglassmtg.com