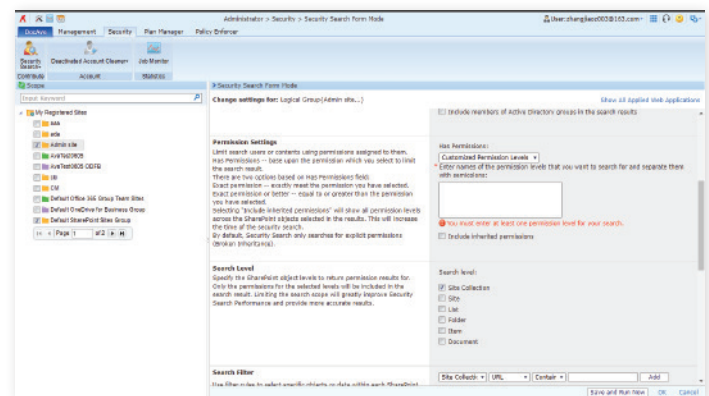
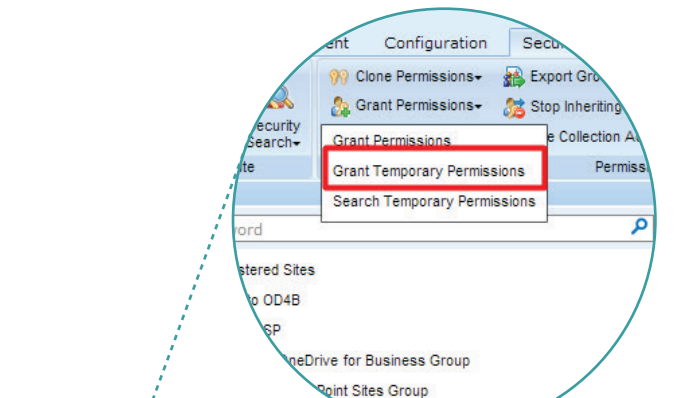


# Office 365 Management

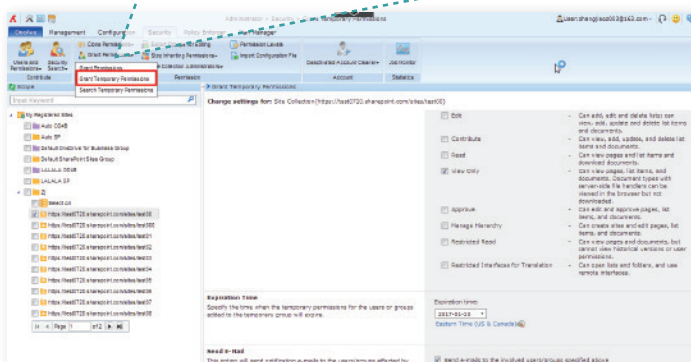
Your Cloud. Our SaaS. A Powerful Combination.

## Administration

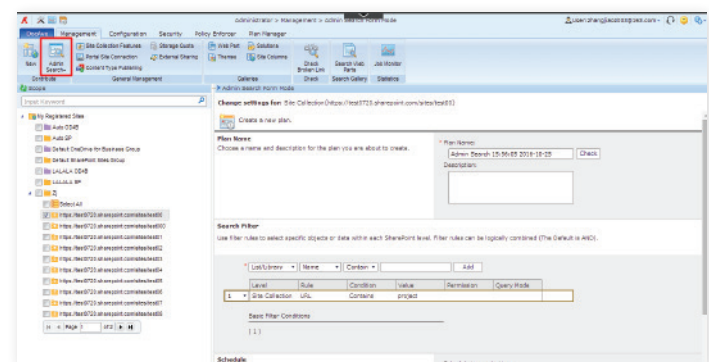
- **Centralized Management** – Manage Office 365 Groups, SharePoint Online, and OneDrive for Business security settings, configurations, and content through a single dashboard.
- **Bulk Configuration** – Perform all SharePoint administrative functions in bulk and across multiple SharePoint Online instances.
- **Security Trimming** – Carry out automatic security trimming and granular delegation for accountable users, AvePoint Cloud Management modules, and Office 365 sites and content.
- **Security Search** – Allow administrators to search for and manage native user or group permissions, even at specific levels, directly through Office 365 Groups, SharePoint Online, and OneDrive for Business.
- **Temporary Permissions** – Assign temporary permissions to individual users or groups within Office 365 and audit all administrative actions.
- **Rule-Based Search** – Utilize rule-based search capabilities to quickly identify, edit, and manage Office 365 objects.



Security Search



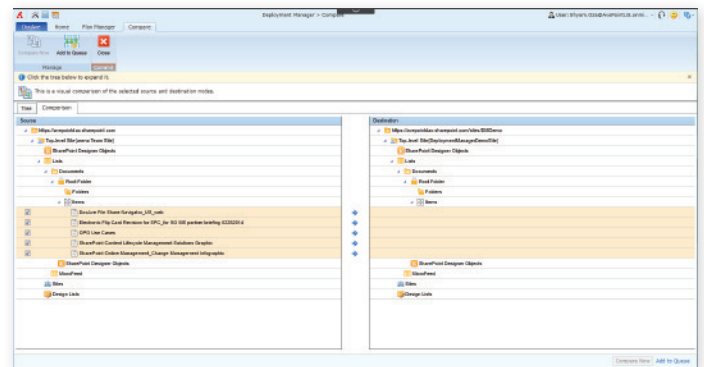
Grant Temporary Permissions



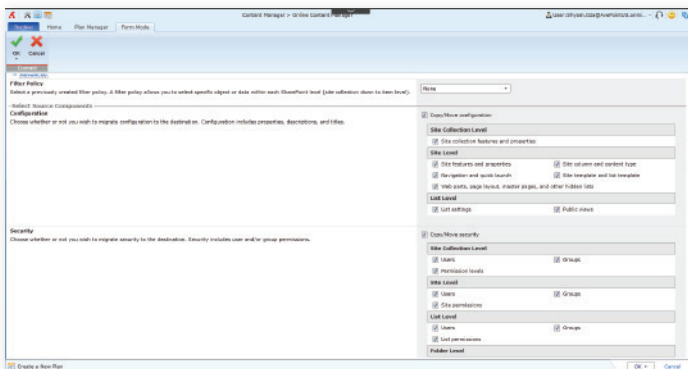
Rule-Based Search

## Content Migration

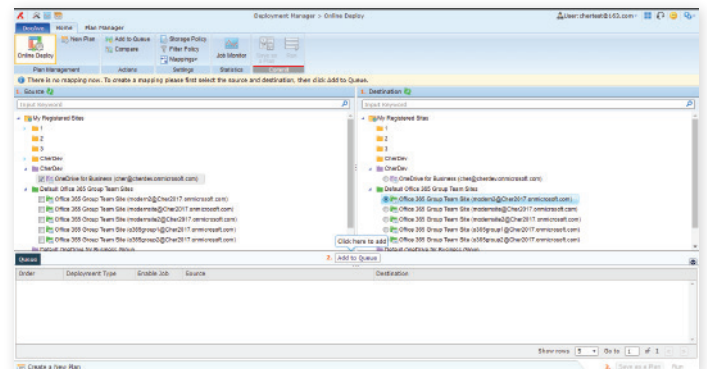
- **Restructure with Full Fidelity** – Copy, move, or restructure sites, content, and topology within or across Office 365 tenants while preserving associated permissions and metadata.
- **High-Speed Migration** – Tenant-to-tenant migrations are up to ten times faster than before using Microsoft's SharePoint Online Migration API and Azure technologies.
- **List and Library Integrity** – Maintain list and library integrity with full support for all list types (including in-place records, document libraries, issues lists, discussion threads, and announcements), content metadata, and configurations while restructuring.
- **Granular Deployment** – Granular deployment of select SharePoint objects and customizations—including site collections, sites, lists, folders, items, configurations, design elements, security settings, Managed Metadata Service settings, web parts, workflow and forms — to other locations.
- **One-to-Many Element Propagation** – Propagate site elements from one object to multiple destinations to quickly make changes across sites or Office 365 environments.
- **Scheduling** – Customize schedules to propagate changes outside of business hours.
- **Deployment Comparison** – Compare source and object details for propagation as well as propagate elements and execute tasks from one object to another (or to multiple objects).
- **Rollback** – Automatically back up a destination environment for easy rollback.
- **Simplified Domain Consolidation** – Simplify content migration by allowing all objects tied to specific users to be moved from one domain to another in bulk.



Deployment Comparison



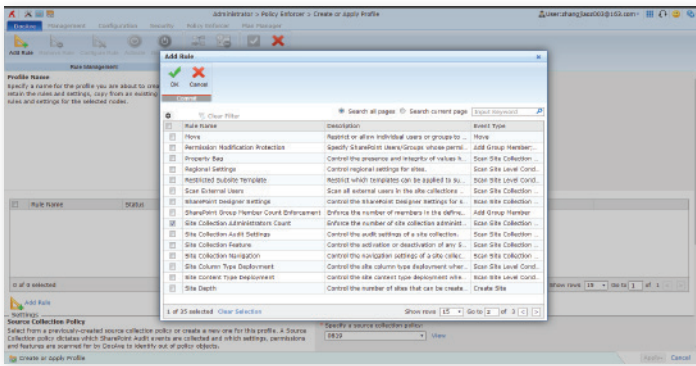
Restructure with Full Fidelity



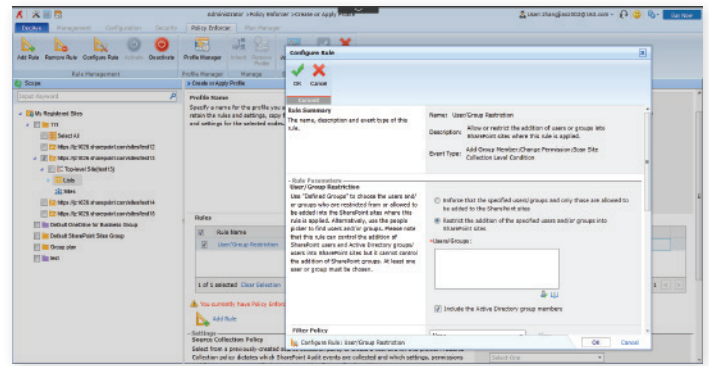
Granular Deployment

## Monitoring & Policy Enforcement

- **Policy Enforcement** – Monitor for and automatically notify or adjust unauthorized or out-of-policy changes to configurations, features, permissions, and settings with out-of-the-box, configurable rules.
- **User Restriction** – Restrict access to and sharing of Office 365 Group team sites, SharePoint Online sites, and OneDrive for Business content both internally and externally.
- **Batch Mode** – Control sites and site collections with batch mode to quickly implement configurations, enforce policies in bulk, and reduce costs associated with infrastructure management.
- **Managing External Sharing** – Effectively manage external sharing activities in Office 365 by vigilantly controlling where and how external sharing is permitted.



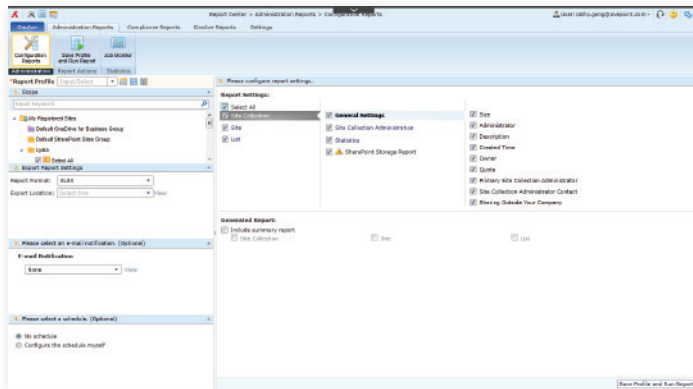
Policy Enforcement



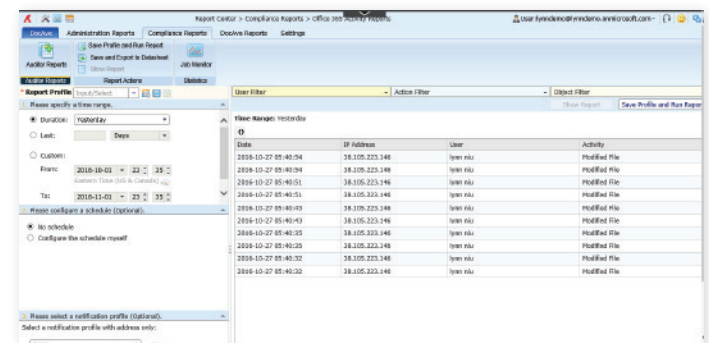
User Restriction

## Reporting

- **Global Reporting** – Generate reports on global Office 365 SharePoint Online, Group team sites, and OneDrive for Business settings and security to track any unauthorized changes and react.
- **Audit Reporting** – Generate audit reports for item lifecycle, list deletion, permission changes, site access, and user lifecycle across an entire Office 365 environment.
- **User Activity Report** – Audit all user activities in SharePoint Online, Exchange Online, and Azure Active Directory (AD) through integration with the Office 365 Activity Management API.
- **Report Exportation** – Export reports to a local system or publish to SharePoint libraries for analysis.
- **Report Location** – Allow customers to connect to their own SQL Azure databases in case the default Report Center database reaches full storage capacity.



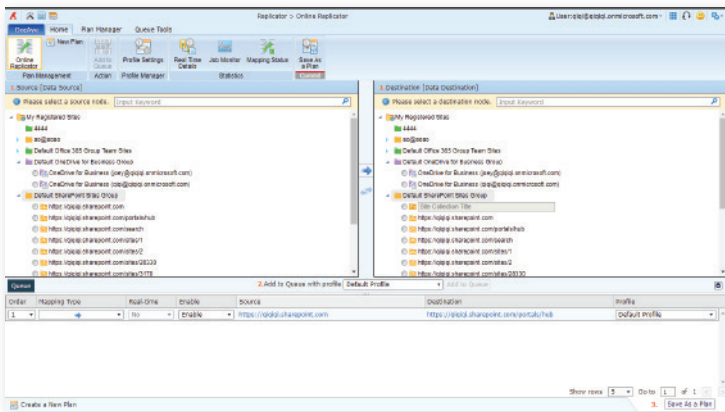
Global Reporting



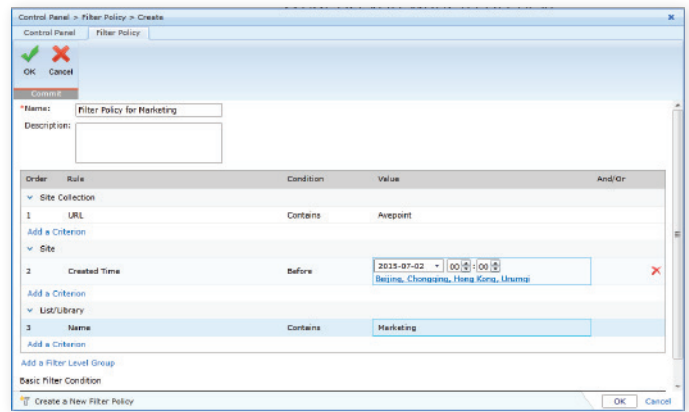
User Activity Report

## Synchronization

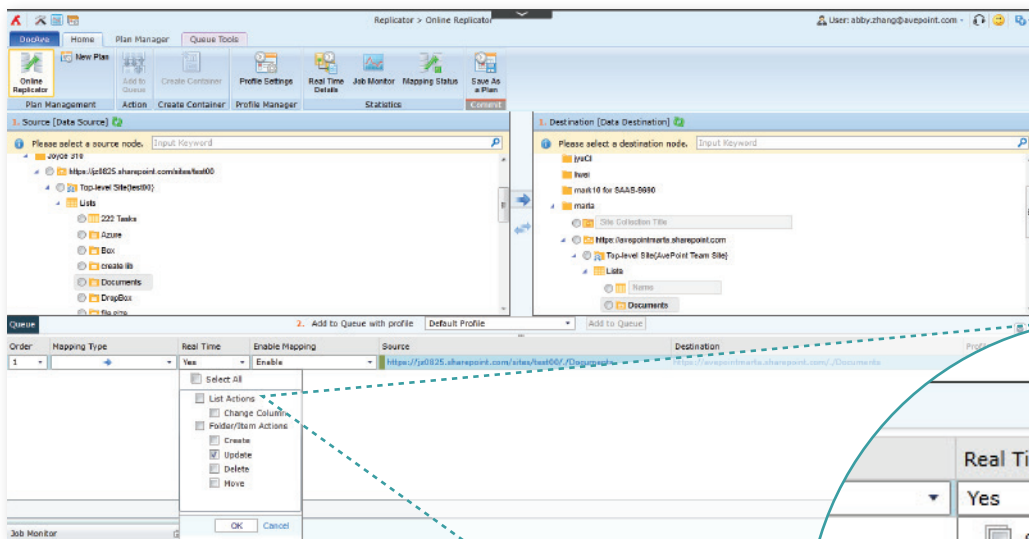
- **Cross-Instance Replication** – Move or copy Office 365 Groups, SharePoint Online, and OneDrive for Business content with associated metadata for automated content publishing and synchronization.
- **Filter Policies** – Publish select Office 365 content across sites, lists, and libraries using policy filters based on built-in or custom metadata, such as approval status.
- **Real-time or Scheduled Replication** – Perform live, real-time replication based on customizable event triggers (including item updates, deletions, and moves) or perform scheduled replications as often as every 15 minutes.



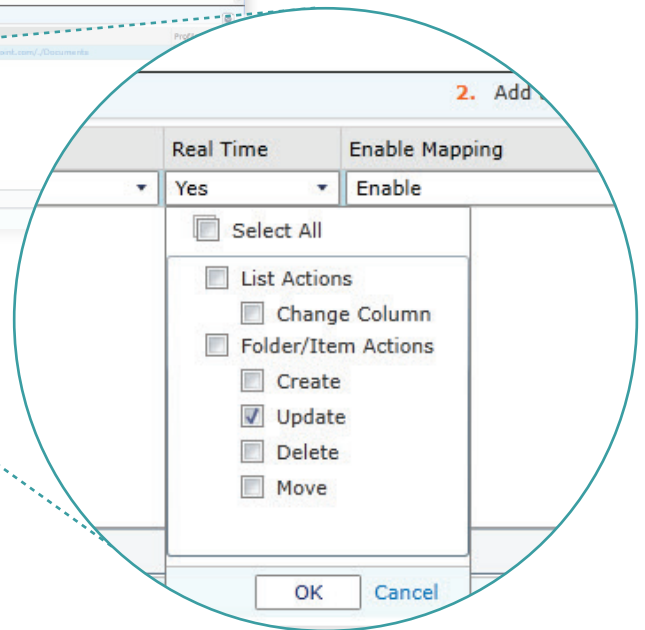
Cross-Instance Replication



Filter Policies



Real-time Replication



For a comprehensive list of new features in this release, please view our [AvePoint Cloud Management Release Notes](#).

## How to Buy AvePoint Products

Contact: 201.793.1111 | [Sales@AvePoint.com](mailto:Sales@AvePoint.com)  
AvePoint Global Headquarters | 525 Washington Blvd, Suite 1400 | Jersey City, NJ 07310

Start your free trial today:  
[www.avepointonlineservices.com](http://www.avepointonlineservices.com)