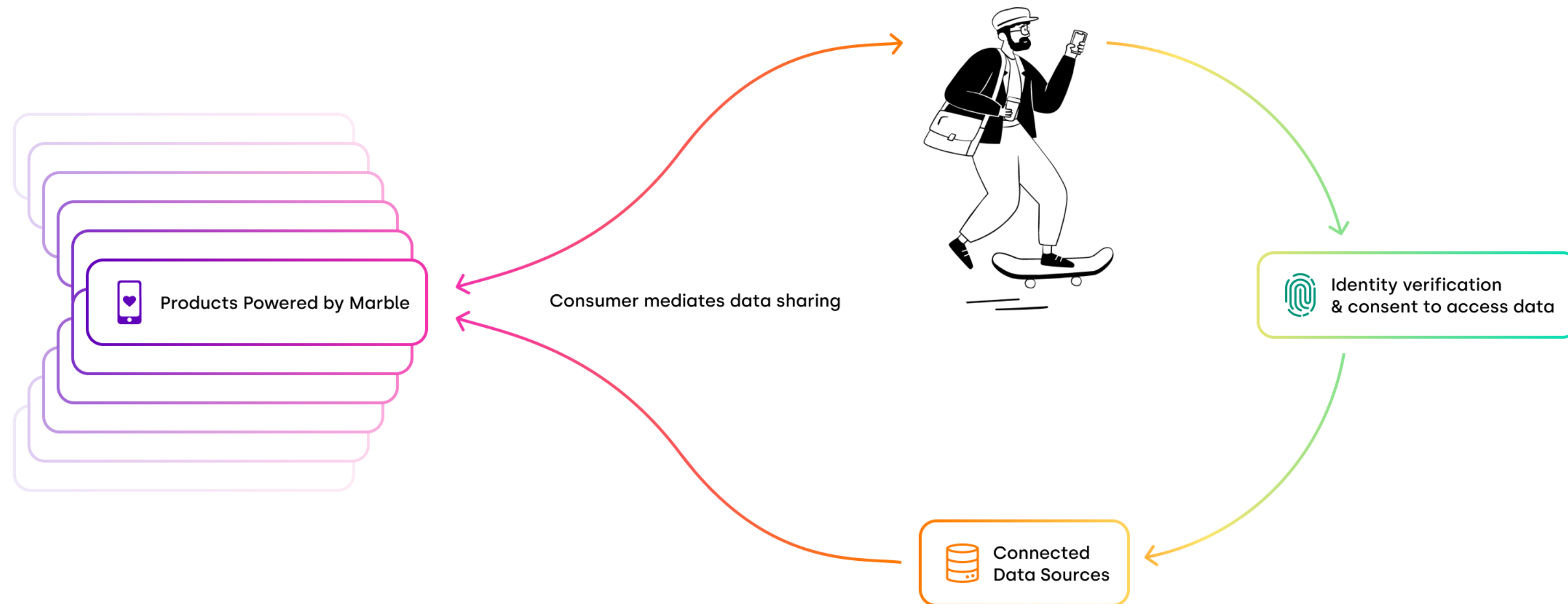

marble

marble

The world's simplest health data API.

We're on a mission to power
**patient-authorized health information for
businesses.**

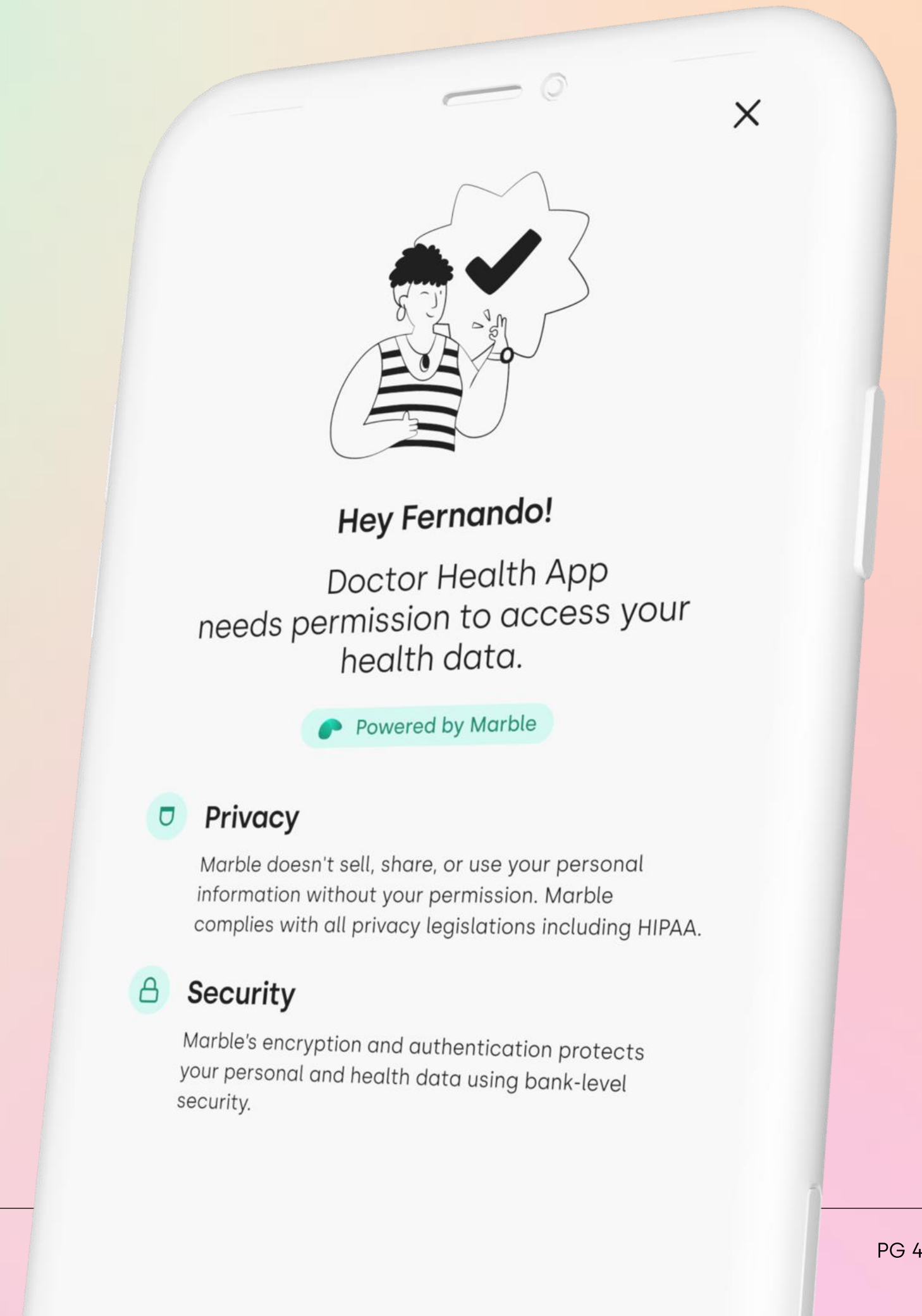
We provide developers, apps, and businesses with seamless access to every and any type of health data.



Marble simplifies access to consumer health data.

We are expanding our world class health data APIs to facilitate comprehensive data access. We deliver everything you need to streamline and simplify data access:

- 1000s of health data integrations packaged into one API
- A complete identity, authorization, and privacy compliance solution
- Easy to use, structured data elements to suit customers needs



Marble is the Best-in-Class platform for connecting health data.



Marble is a health data network that makes it easy for people to securely connect their health data to the apps they use to manage their lives.



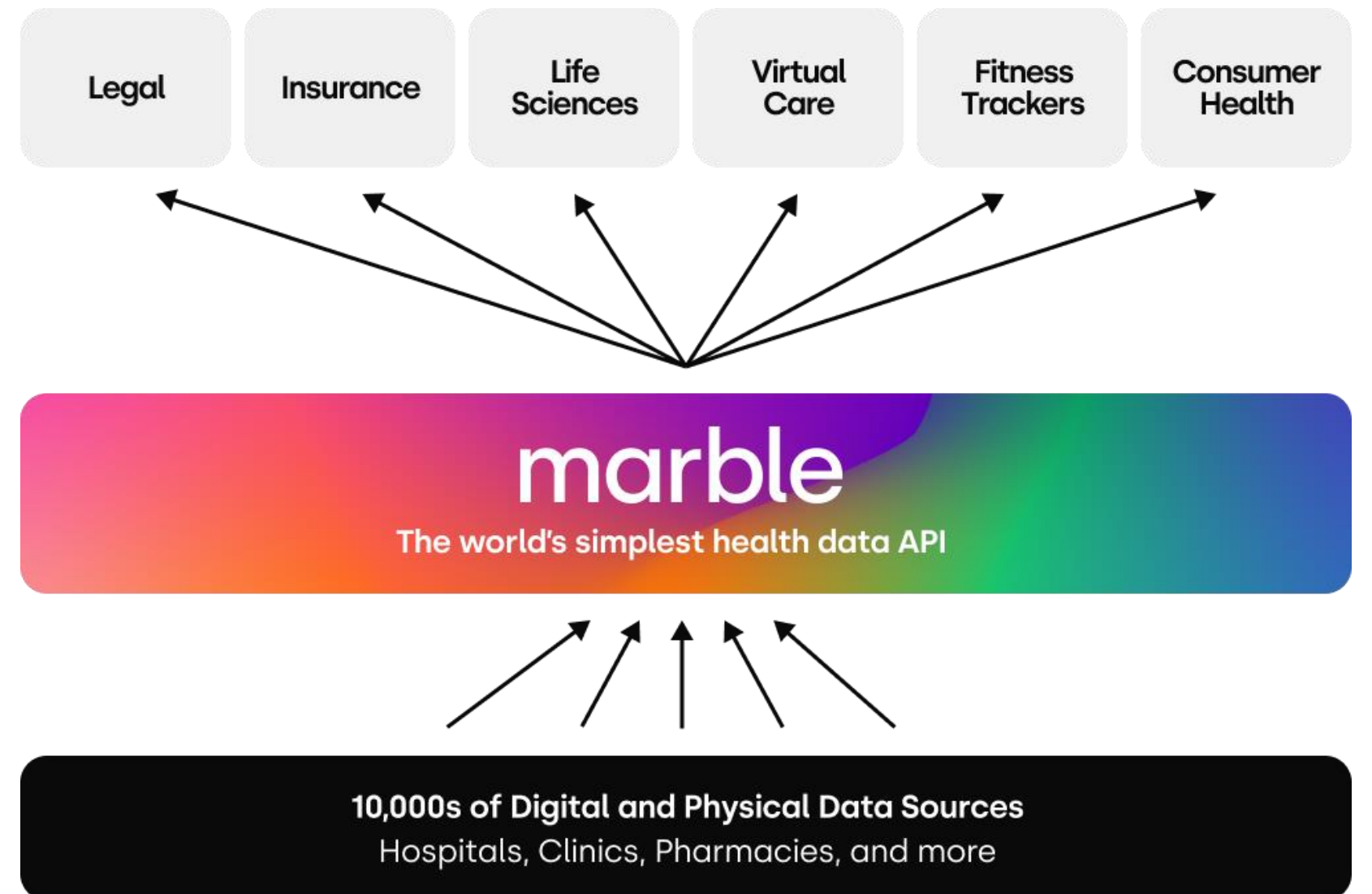
Proprietary consent and routing engine that accesses consumer health data as efficiently as possible.



Provides safe, secure connections for 300+ million consumers in North America (HIPAA Compliant)



Multiple first party applications that pull from Marble's vast data network that supported 25% of mass tort claimants in the last 18 months, driving > \$MM in revenue



Value to your business



Security

Leverage end to end encryption at rest and in transit for the ultimate secure file transfer from destination into your application.



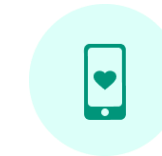
Privacy

We pride ourselves as compliance masters in both federal and state-based privacy legislation. You get instant HIPAA compliance.



Simplicity

We've aggregated the numerous and varied API, SFTP, FHIR, Portal and manual connections in healthcare to give you on standard on ramp.



Flexibility

Marble is built to service multiple industry needs. We plug in to multiple data sources, data types, and access method to meet your specific needs.



Nationwide Access

Leverage access to over 50,000 clinics and 5,000 hospitals with your nationwide health data coverage through multiple data sources.



Turnkey Consent

We've built the most comprehensive consent engine available. Use our enhanced consents or upload your own for instant authorization.



Faster Access

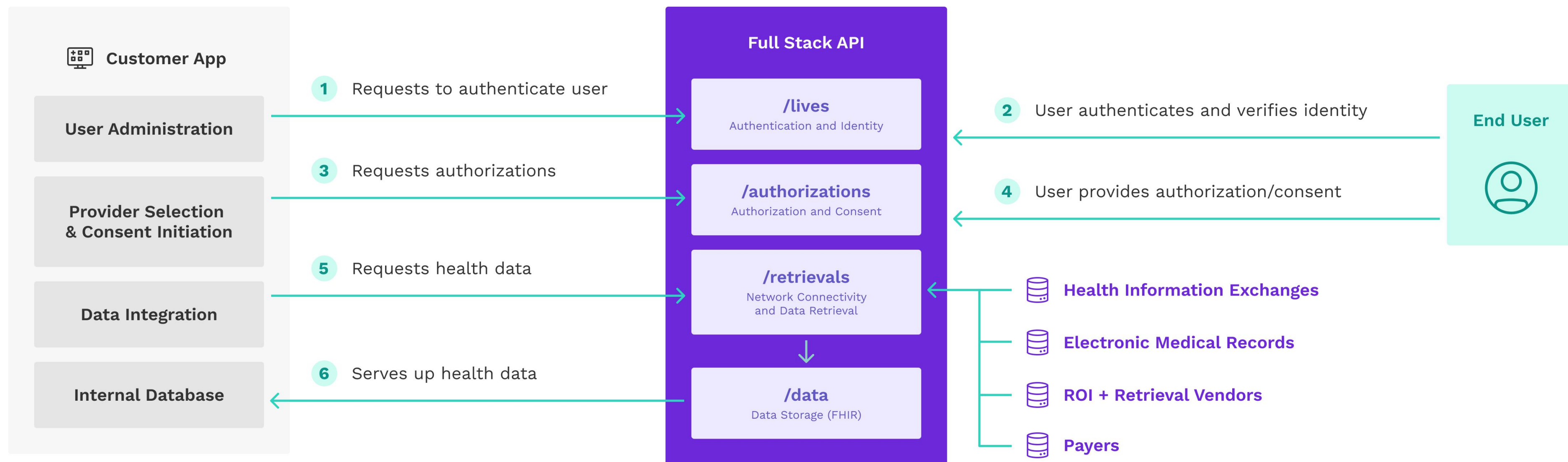
We built an API platform to bring you the fastest data access available for every source we connect to. Get the information you need now!



Unlock Opportunity

Build new products, generate new revenue lines and enhance the UX of existing products with faster, broader health data access.

How it works



Our comprehensive data network.



Electronic Medical Records (EMR)



Health Information Exchanges (HIEs)



ROI + Retrieval Partners



Payers

How is data retrieved?

Digital Retrieval

Digital Retrieval

Manual Retrieval

Digital Retrieval

What type of data is available?

Patient Portal Data

C-CDA
(USCDI by 2022)

Full Set Medical Data

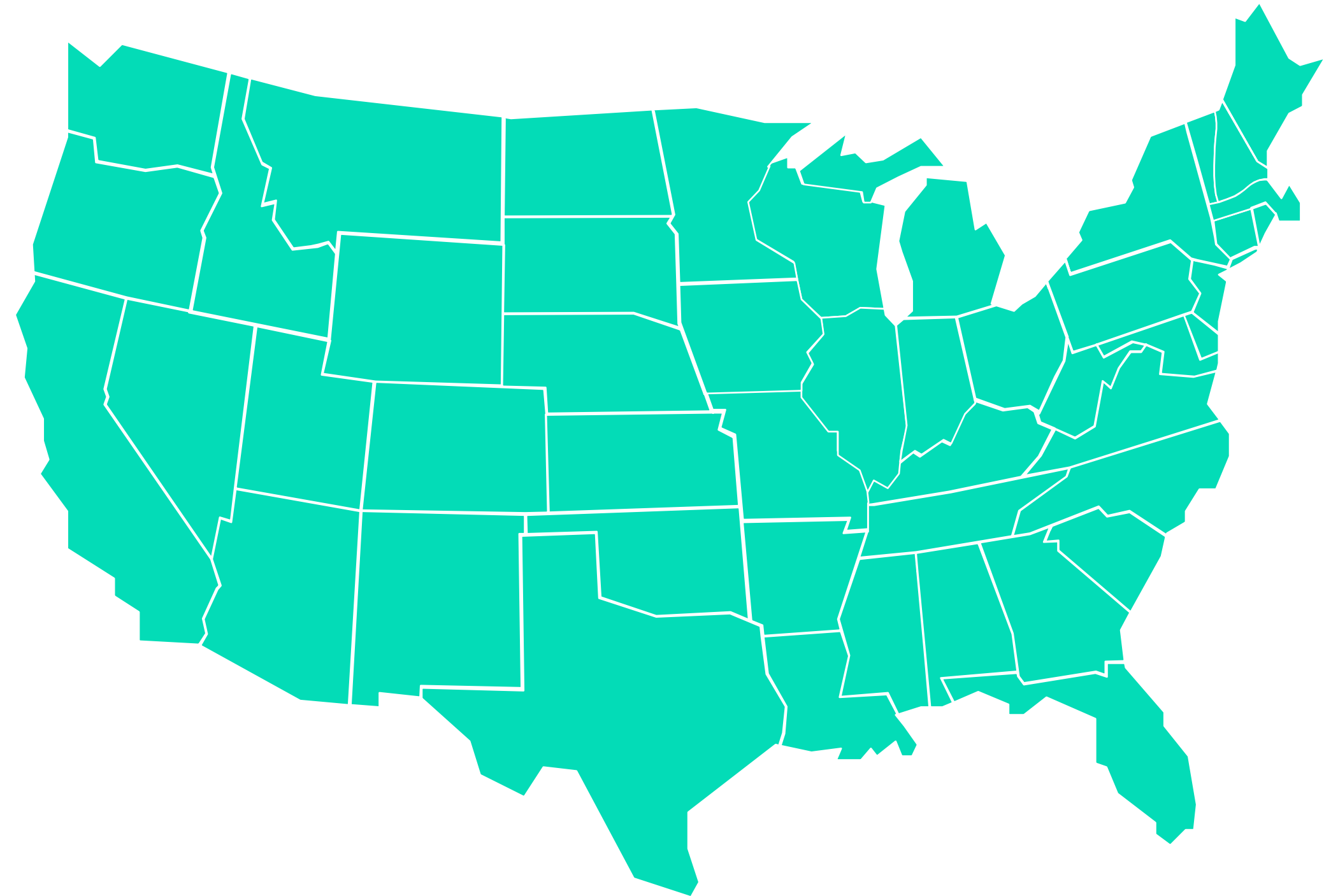
Claims
Billing Records
Medical Records

Coverage

50,000+
clinics

4,000+
hospitals

Multiple
Data types



Why build with Marble API?



For Developers

- Accelerate time to market, from months to minutes
Abstract away complexities (relationships, consent, integration points)
- Trust built in with robust, proprietary consent engine that eliminates risk to your business
- Open, easy to use APIs
- Data source breadth across the U.S. and Canada
- Built in security, reliability, and compliance



For Users

- Single repository of health data
- Visibility of the health data you've shared with apps
- Control access to your health data
- Design centered around security, privacy, and consent

Identity and Consent

Includes the following identity and consent components:

Demographic intake

ID capture

Facial recognition

Demographic validation

Identity verification

Authorization capture

Health Data Access

Includes the following potential use cases:

Payer Portals

Nationwide Networks

Claims Databases

EMR Portals

Health Information Exchanges

Medications

Next Steps

1. Base agreements to be signed: Business Associate Agreement (BAA) & Consumer Privacy Agreement (CPA)
2. Scoping a Proof of Concept;
3. Finalizing API POC agreements;
4. Run Proof of Concept

Thank you!

Appendix

Our API Beta Program

A closed beta for an exclusive group of participants through to April to implement and utilize Marble's new API platform offering unparalleled health data access and will offer a first look at our solution to:

- Authenticate users, capture their demographics, and verify identity
- Gain patient's consent to request their health data
- Request and retrieve real digital health data for patients
- Built in privacy, security, integration, and data normalization

Participants will receive many benefits through the Beta to build their integration to Medchart APIs including:

- Hands on support with Marble's Product and Development team via regularly scheduled dedicated office hours, or ad-hoc requests as needed with Marble Engineers to build your application
- Dedicated channel to provide product feedback
- Preferential pricing as one of our first customers

Our API Beta Program

Marble will use feedback gathered to improve the following for launch:

- API ease of use, feature/function, and a high-quality developer experience
- End user experience

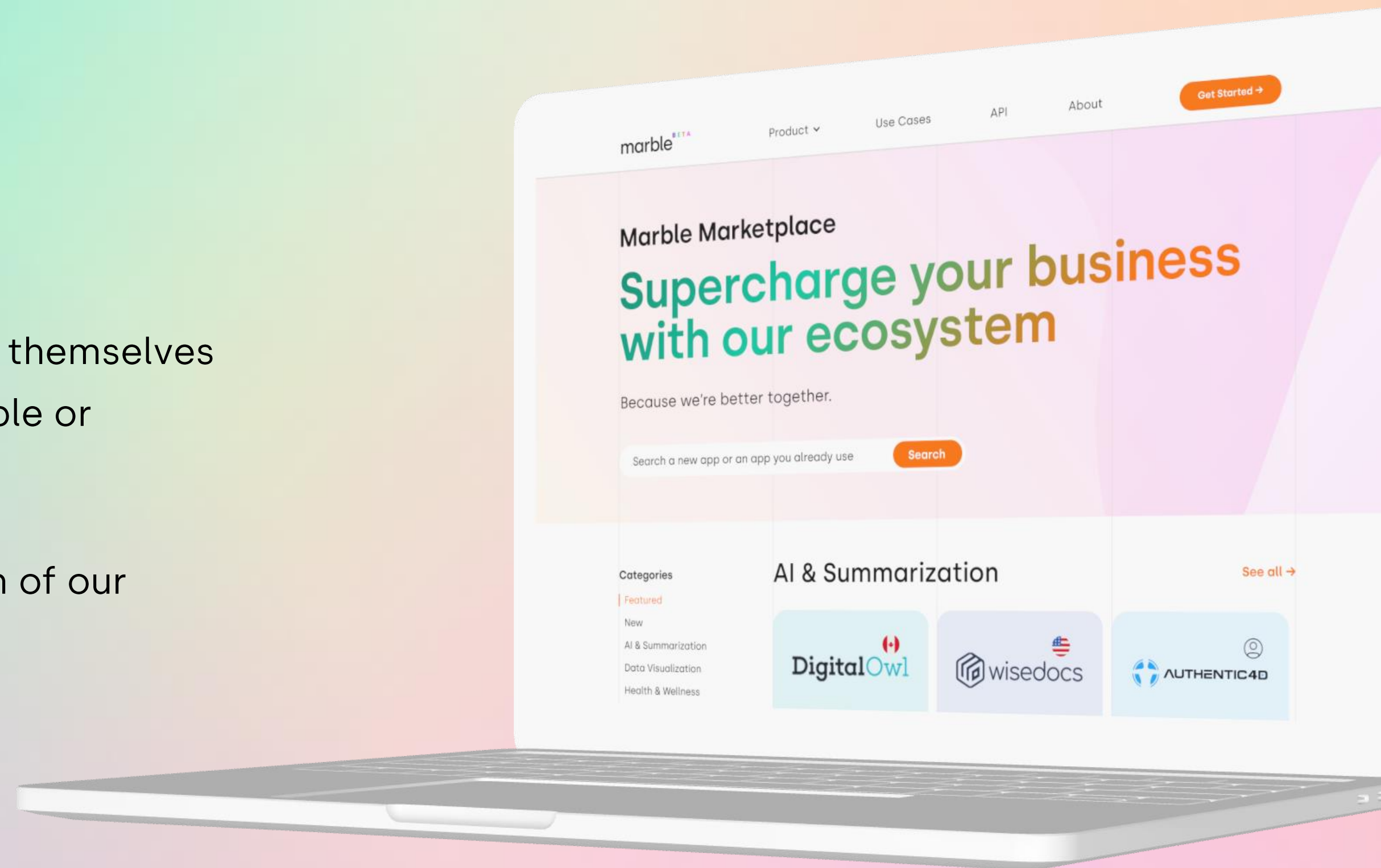
Beta will allow participants to connect to, and test 4 data sources, with more connections being added regularly:

- PBM data – US nationwide
- KHIN – Kansas Health Information Exchange
- Epic MyChart – EHR System (select providers)
- Kno2 – Health Information Exchange/Network

Our App Store opens up more opportunities.

We're building an ecosystem so that:

- App developers can create economic value for themselves
- We can offer product and services we aren't able or planning to build
- We can greatly decrease time to market
- We can greatly increase the depth and breadth of our product for clients



HOW TO USE THIS TEMPLATE

Ask Abby or Abdullah if you have any questions

- This is best used on the Desktop App, not browser
- Please first "Save As" and make a copy
- Install Silka fonts if you have not already. [Link](#) to fonts
 - [Learn](#) how to install fonts on PC
- Make sure you update the header titles to match your presentation title, the page title and any subtitle (you don't need to have a subtitle, but page title and presentation title is good practice)
- The image placeholders are suggestions for placement. If there's no image, no prob
- Use the drop-down in "New Slide" for additional slide formats