



iTwin Capture

Bentley[®]
Advancing Infrastructure

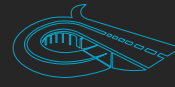
© 2022 Bentley Systems, Incorporated

About Bentley:

Solutions for Project Delivery and Asset Performance

Bentley's mission is to provide *innovative software and services* for the enterprises and professionals who *design, build, and operate* the world's infrastructure – sustaining the global economy and environment for *improved quality of life*.

BENTLEY PROPRIETARY AND CONFIDENTIAL



Road



Bridge



Rail Network



Pipe Network



Water Treatment Plant



Wind Turbine



Cell Tower



Substation



Power Plant



Digital Factory

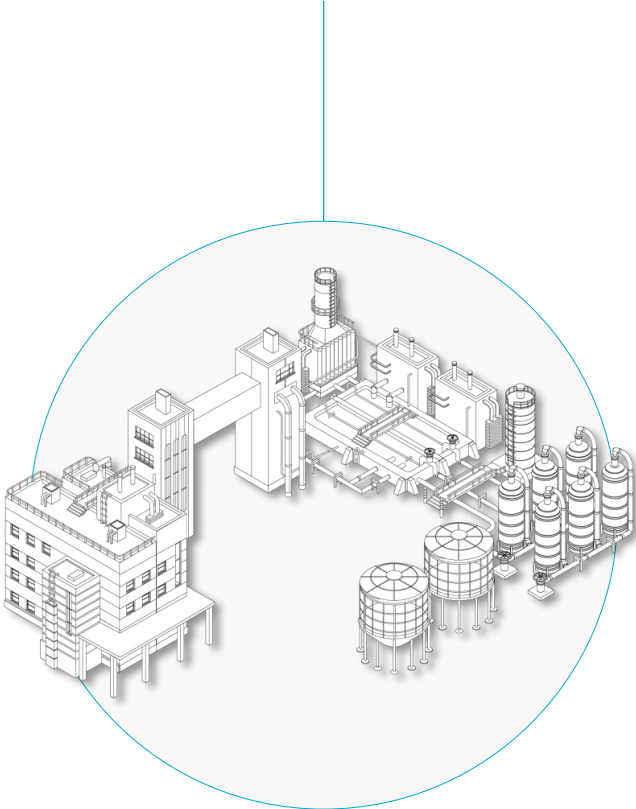


Infrastructure Digital Twins

Real-world



Living digital twin



Physical Asset



Engineering

- Specs
- Drawings
- Documents
- Models
- Analyses
- Geotech
- OEM specs

Reality Capture

- Photos
- Panoramas
- Meshes
- Point clouds
- Thermal
- Radar

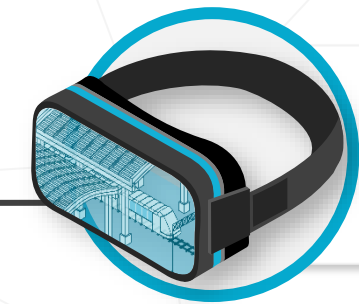
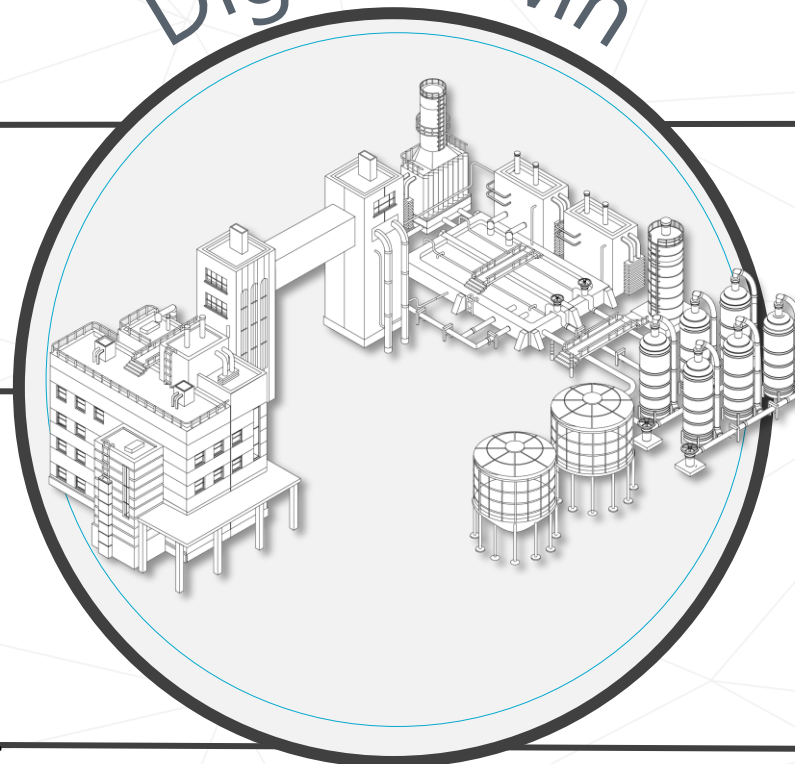
Operations

- IoT feeds
- Sensors
- Inspection records

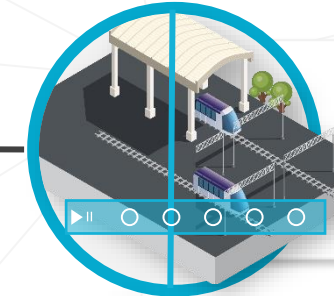
Information

- Asset tags
- Work orders
- Maintenance records
- ERP
- Master Plans

Digital Twin



3D/XR
Immersive
Visualization



4D
Timeline of
Change



AI/ML
Analytics
Visibility

Reality Capture and Digital Twins



Digital representation

Digital representation of a physical asset, process, or system



Continuously surveyed

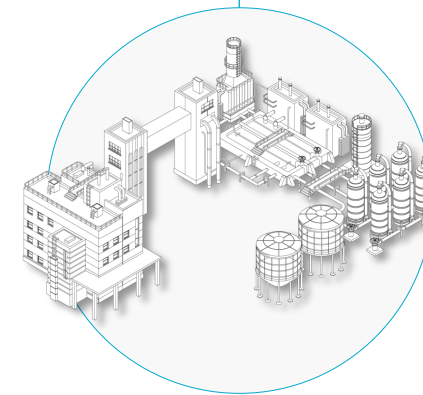
Continuously synchronized from multiple sources



Generate insights

Predictability and performance optimization

Living digital twin



Real-world





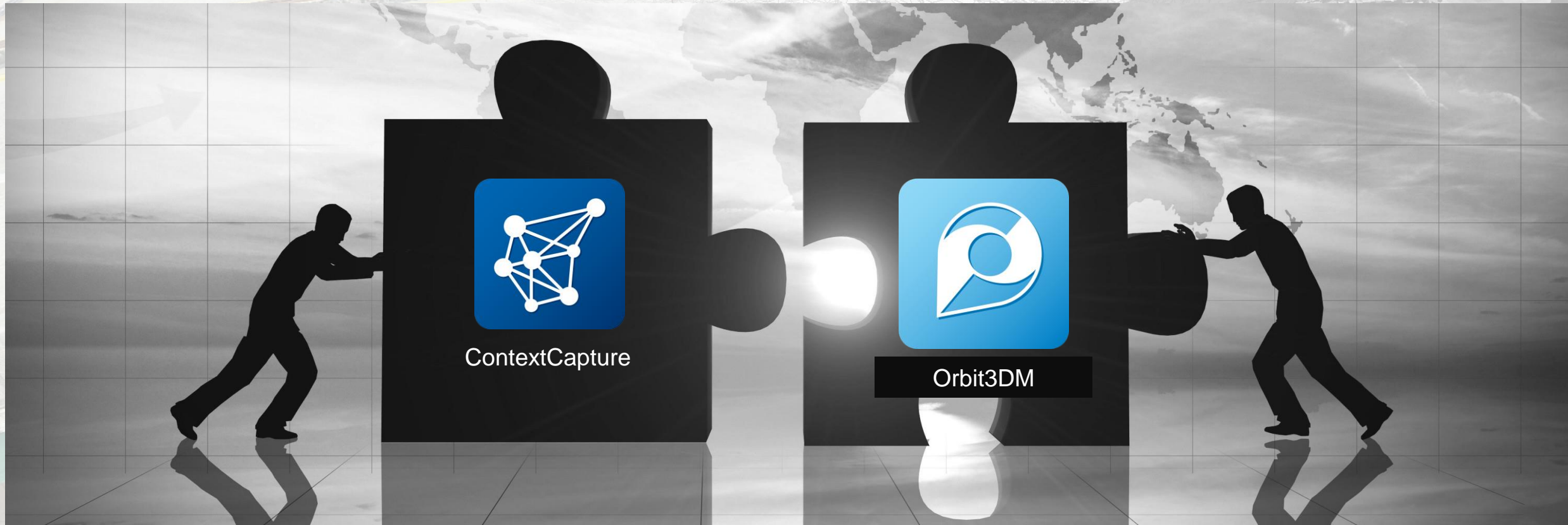
iTwin Capture

Add Real-world Insights with Reality Capture to Your Digital Twins

Every digital twin should provide users immediate access to real-world insights across their workflows. iTwin Capture enables reality capture workflows from data creation and enhancement, to management and sharing, to insight extraction and delivery.

iTwin Capture

Add Reality Data and Real-world Insights to Your Digital Twins



iTwin Capture

Add Reality Data and Real-world Insights to Your Digital Twins

3

Validate, Extract Insights, and Deliver

2

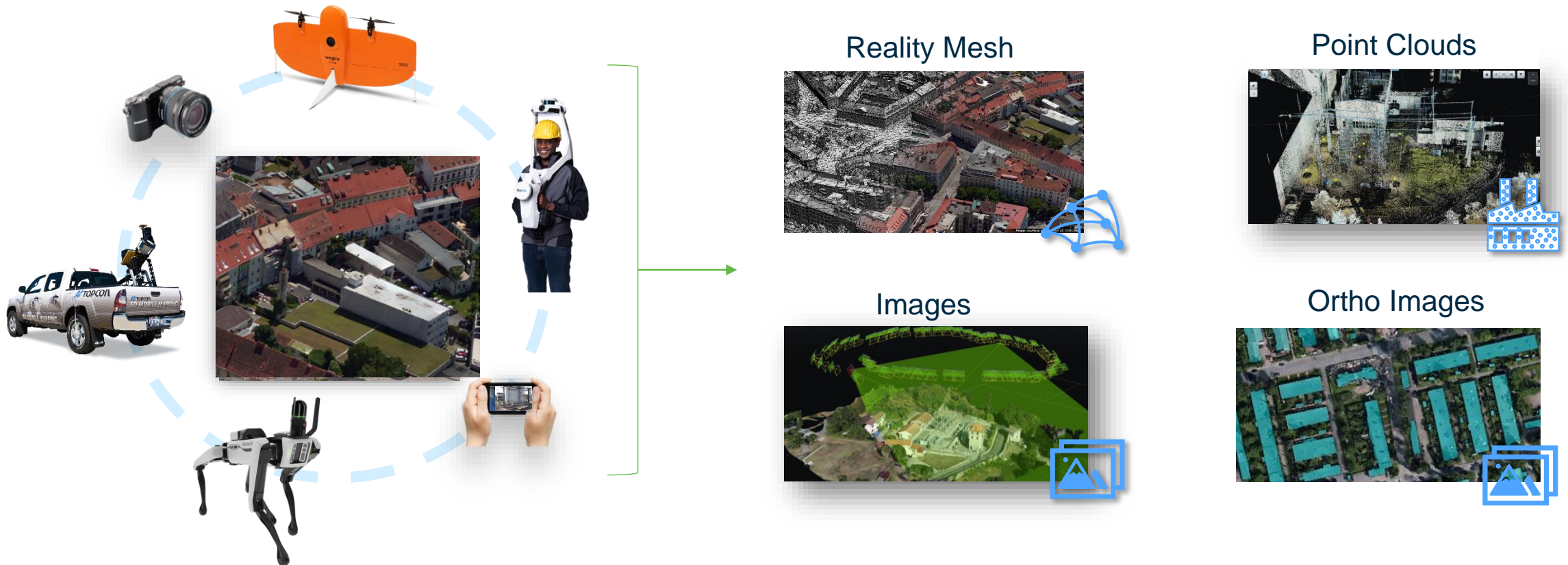
Manage and Share

1 **Capture, Create and Enhance**

1 Reality Data Creation and Enhancement

How to integrate and enhance reality data

How to leverage modern photogrammetry and scanning at scale to create reality mesh



SIEMENS POWER STATION

1,250 drone images
2,500 ground images
650 million points

SIEMENS

Bentley in association with Topcon and Siemer

- CC_Belle_Bridge + <
- ▼ Capture
 - Belle_Bridge
 - ▼ Belle_Bridge - AT
 - ▼ Reconstruction_1
 - Production_Belle_Br...

Production - Production_Belle_Bridge_Mesh_3SM ⓘ

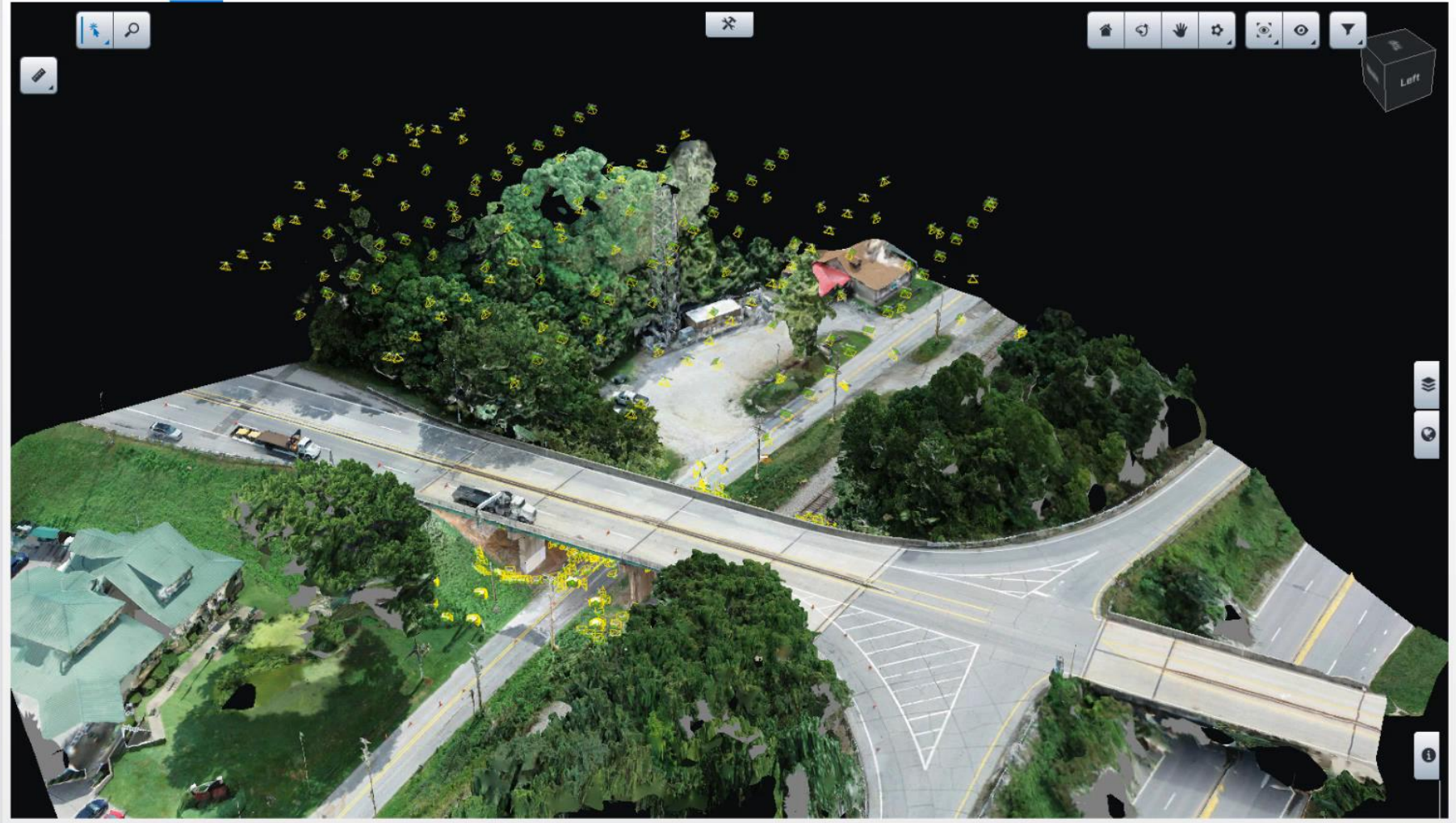
Submit Update

Extract Ground



Completed 35M production

Overview Settings **Result**



Display production result and control quality.





ESK
BN

KIS

iTwin Capture to **Create and Enhance** Reality Data

Best reality mesh quality from the air, the ground, and very close range... All together

Scalability (works for project of all sizes – biggest project requires CC Center)

Reality meshes, orthophotos from photos and/or LiDAR point clouds

Excellent support of coordinate systems

Interoperability through many formats (Bentley and 3rd parties)

On-prem (Windows and Linux) and Cloud service

Highly customizable (SDK and APIs)

Automatic enhancements of images and point clouds

2 Manage and Share Reality Data



How to **MANAGE** the terabytes or petabytes of reality data captured over time?

How to deal with all types of reality data whatever the hardware provider or the type of device (photo, LiDAR..)

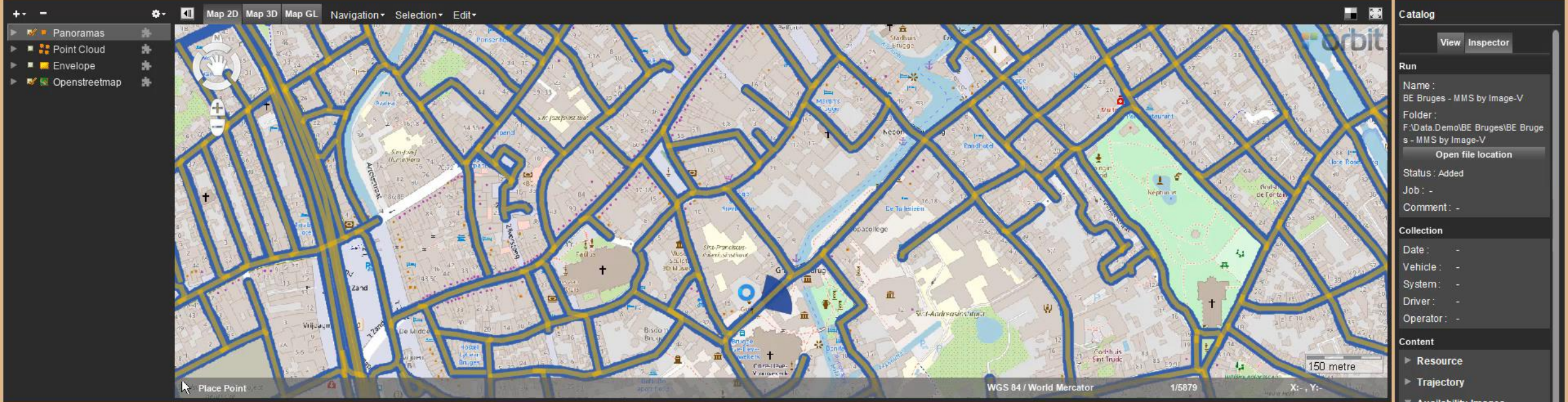
How to organize, optimize these data and make them searchable

How to share these data and support downstream consumption in a controlled and secured way.



We refer to a project in Flanders, Belgium, where the user was capturing with 4 mobile mapping cars the entire **64000 kms** of public roads in LiDAR and 360 degrees imagery. This ends up in a database of **80TBs** of point cloud datasets, and **12.4 million pictures**. How do we deal with such volumes?





Catalog

View Inspector

Run

Name: BE Bruges - MMS by Image-V

Folder: F:\Data.Demo\BE Bruges\BE Bruges - MMS by Image-V

Open file location

Status: Added

Job: -

Comment: -

Collection

Date: -

Vehicle: -

System: -

Driver: -

Operator: -

Content

- ▶ Resource
- ▶ Trajectory
- ▼ Availability Images
- ▼ Panorama Images
 - Photo positions: 196891
 - Crs: 4326
 - Timestamps: yes
 - Timestamps min: 1148104830
 - Timestamps max: 1163229526
 - Original images: 0
 - Volume: 483 B
 - File format: jpg
 - Processed images: 24086
 - Volume: 92.1 GB
 - File format: omi
- ▶ Planar images
- ▶ Planars
- ▼ Point Cloud
 - Points: 10002 m
 - Crs: 4326
 - Timestamps: yes
 - Timestamps min: 1148104831
 - Timestamps max: 1163229527
 - Rgb: yes
 - Intensity: yes
 - Volume: 466 GB
 - File format: opc
 - Version: 3
- ▶ DTM



iTwin Capture to **Manage and Share Reality Data**

Works with all reality data types, from ground, to air, to hardware agnostic

Scalability (works for projects with hundreds of terabytes)

Physical and virtual data organization dedicated to downstream consumption

Highly configurable with template-based system definition and SDK

Interoperability through many formats (Bentley and third-party)

Excellent support of coordinate systems

Interactive quality control tools

Support all iTwin/digital twin applications

Validate, Extract Insights, and Deliver

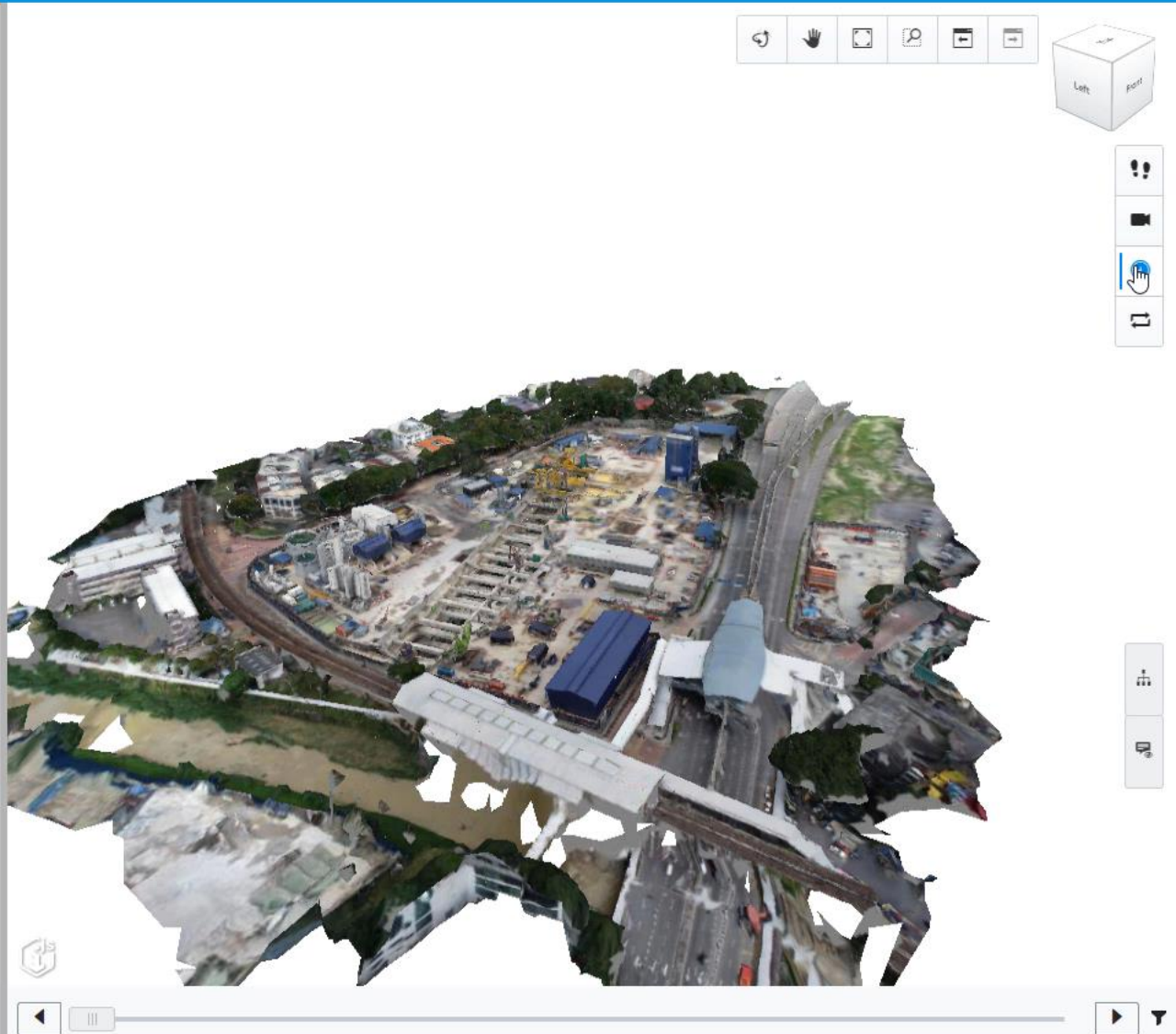
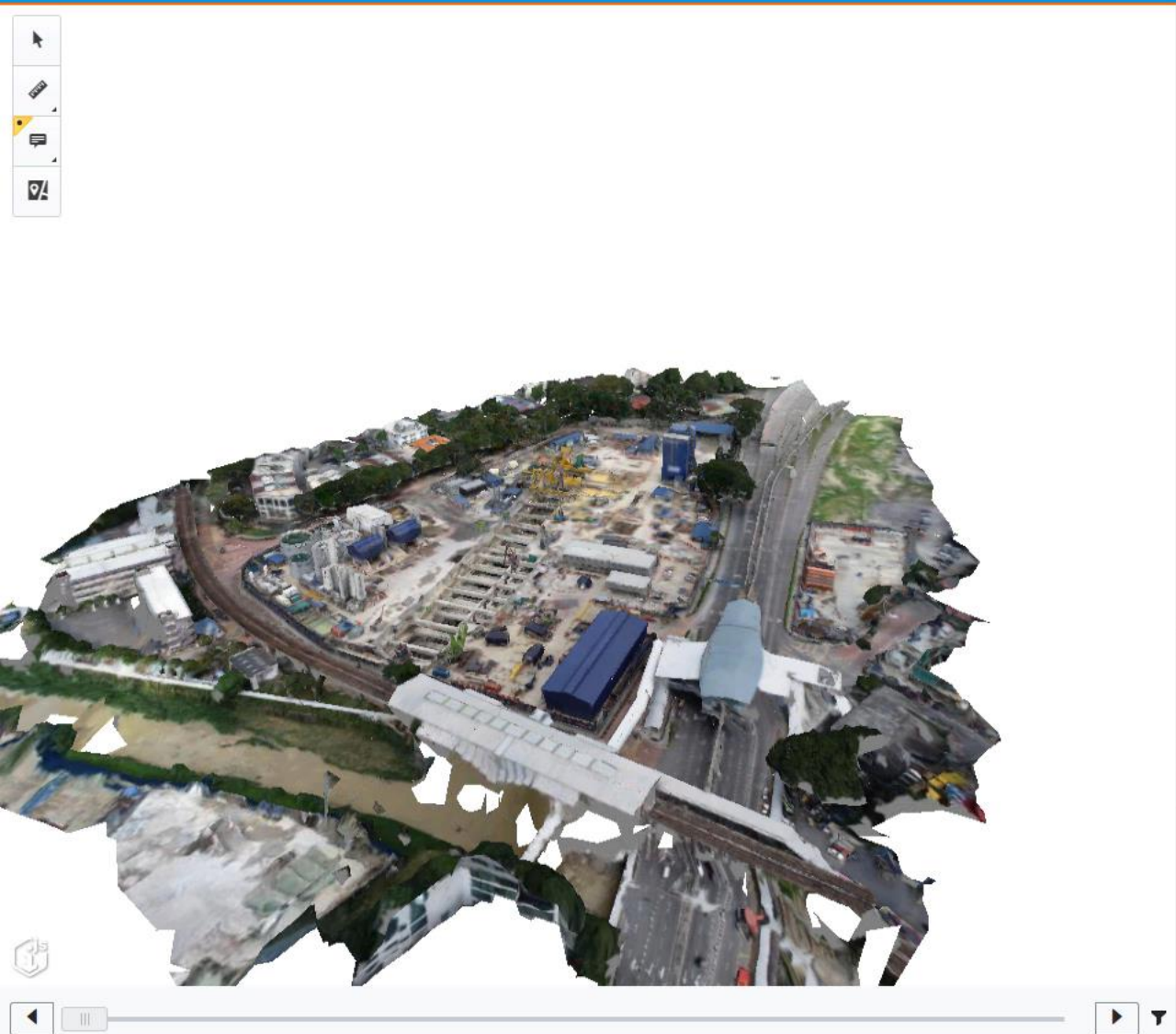
3

How to enable end user to visualize and validate reality data

How to allow user to extract insights such as survey and GIS features out of reality data

How to deliver reality data





No Reality Data with acquisition date

No Reality Data with acquisition date

Data Courtesy of MMC Gamuda KVMRT (T) Sdn Bhd

iTwin Capture to **Validate, Extract Insights, and Deliver**

Web and desktop applications

Reality meshes, point clouds, panoramas, and oblique imagery

High scalability with large datasets

Rich measurements capabilities

Advanced desktop tools with high automation (computer vision and AI)

APIs and SDKs



Subscriptions and Products

Bentley[®]
Advancing Infrastructure

New iTwin Capture Commercial Offering – June 15th

iTwin Capture Cloud Account Consumption Contract	iTwin Capture Modeler Practitioner Subscription	iTwin Capture Suite Practitioner Subscription
<p>iTwin Capture Cloud Services and Apps</p> <p>\$1500 USD</p>	<p>iTwin Capture Modeler</p> <p>\$1500 USD</p> <p>+</p> <p><i>Mandatory</i></p> <p>iTwin Capture Cloud Services and Apps</p> <p>\$1500 USD</p>	<p>iTwin Capture Manage & Extract</p> <p>iTwin Capture Modeler</p> <p>\$4000 USD</p> <p>+</p> <p><i>Mandatory</i></p> <p>iTwin Capture Cloud Services and Apps</p> <p>\$1500 USD</p>

Price Points and Discounts?

- Processing Units: 3.5 USD
(1 Gigapixel or 10 Millions of Points)

- Management Unit: 0.14 USD
(1 Gigabytes per Quarter)
- Minimum fee of 375 USD/Quarter

- Not EVD Eligible
- Not applicable to E365 contracts

iTwin Capture Cloud Services and Apps

- The services:
 - iTwin Capture – Reality Modeling Service: create Reality Meshes & Ortho Images
 - iTwin Capture – Reality Management Service: host Reality Data on the cloud, stream to iTwin Apps, MicroStation Based products
- The Applications:
 - iTwin Capture – Reality Data View: perform QA/QC in Web environment
 - iTwin Capture Mobile: AR based supervised capture & connection to services
 - iTwin Capture Console: Desktop application to configure Reality Modeling project and submit them to iTwin Capture Cloud Services.
- Contracts, 2 options:
 - Included in E365
 - SELECT + CSS + QVIDIAN Order form

iTwin Capture Modeler

- The Applications:
 - iTwin Capture Modeler (renaming of ContextCapture Desktop)
 - iTwin Capture Modeler Center (renaming of ContextCapture Center)
 - Depreciation of the module ContextCapture Editor.
- Licenses:
 - QTL, TL , Perpetual and E365 unchanged.
 - iTwin Capture Modeler included in “**iTwin Capture Modeler - Practitioner Subscription**”



Additional Resources

iTwin Capture Manage & Extract

- The Application :
 - One application **iTwin Capture Manage & Extract**
 - Consolidation of Orbit Content Manager , Feature Extraction (Basic, Pro & Standard)
- Licenses:
 - QTL, TL , Perpetual and E365 consolidated on **iTwin Capture Manage & Extract** (legacy price of Orbit Content Manager).
 - iTwin Capture Manage & Extract included in “**iTwin Capture Suite**”

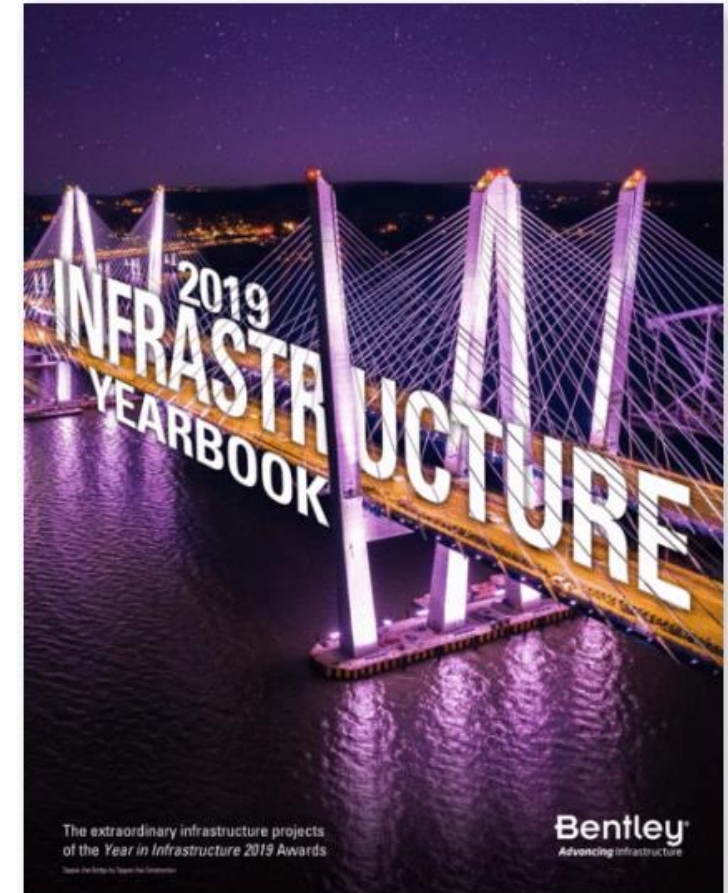
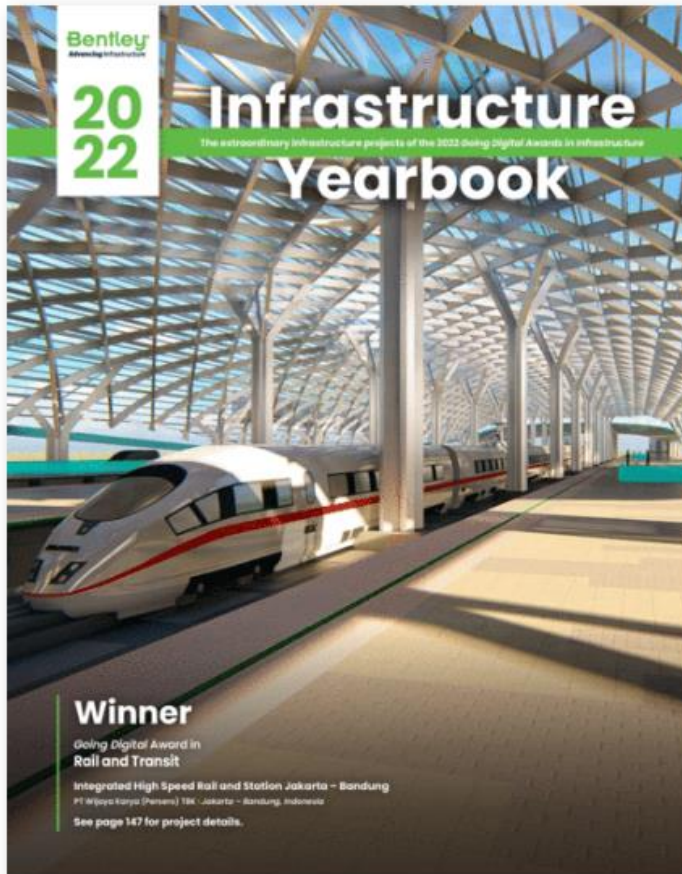
- iTwin Capture “[Communities](#)”
- [Product Datasheet](#)
- [Product Video](#)
- Product Page



User References

Additional Project References

- <https://www.yearininfrastructure-digital.com/> Reality Modeling





Glossary

- **Reality Capture:** process and of capturing, managing and analyzing real-world conditions using reality capture sensor and automatic processing.
- **Reality Capture Sensors:** hardware devices, sometimes referred as remote sensing devices, that can be used to capture real-world conditions. The most common one are LiDAR, RADAR, digital camera, and thermal sensors. These can be handheld, mounted on static tripod or on mobile platforms such as drones, airplane, cars. These types of sensor usually output images and/or 3D point clouds.
- **Reality Modeling:** process of creating models such 3D meshes or orthoimages by combining and/or modifying data capture with reality capture sensors. Example: automatic photogrammetry creating reality meshes out of photos; meshing of laser scan data; meshing of InSAR data
- **iTwin Capture :** Bentley's iTwin solution and brand for reality capture.
- **iTwin Capture Modeler:** Desktop product under iTwin Capture brand which corresponds to the new generation of Bentley ContextCapture and which is dedicated to reality modeling.
- **iTwin Capture Modeler Center:** Enterprise Product under iTwin Capture Brand which corresponds to the new generation of Bentley ContextCapture Center and which is dedicated to Reality Modeling for large mapping use cases on user IT infrastructure.
- **iTwin Capture Cloud and Apps:** iTwin Capture Cloud services to perform reality modeling, reality data management, and reality data analysis. These services can be access through application programming interface through dedicated applications : iTwin Capture Mobile and Console. , as well as
- **Reality Data Management application:** iTwin product component providing a web interface to manage reality data under iTwin Capture and iTwin Experience. This is the new generation of ProjectWise ContextShare.
- **iTwin Capture Manage and Extract:** iTwin Capture desktop product used to catalog and organize reality data locally and on cloud as well as to perform feature extraction. This is the new generation of Orbit 3DM Manage and Extract, Content Manager and Feature Extraction products.