



NETTPROTECT

CONSTANT VULNERABILITY SCANNING

ABOUT US



Continuously enhancing the security posture of your business through vulnerability detection & management. Information Security is no longer the 'ignore it, maybe it will go away' conversation that it used to be.

We offer a **managed service** to take care of your vulnerability and assessment requirements.



NettProtect Service

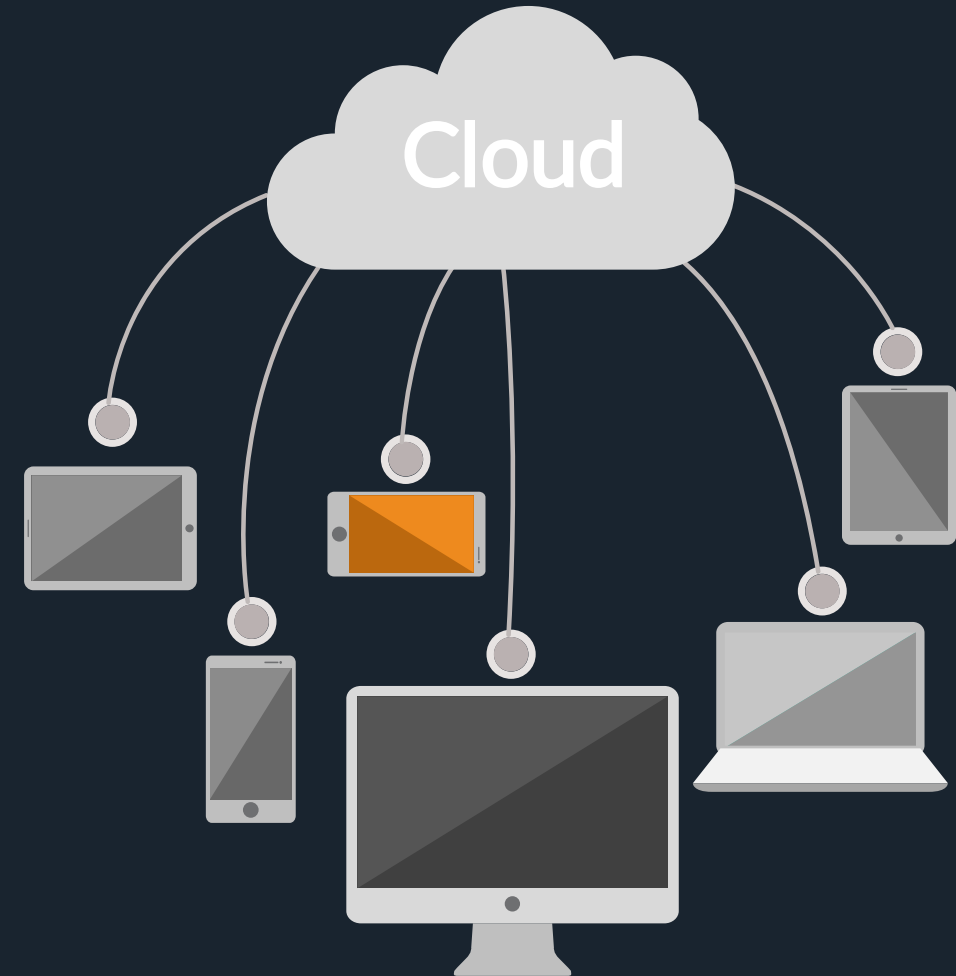
VSaaS (Vulnerability Scanning as a Service)

The Landscape

The reality is that if your systems have not been compromised, or if your systems have not measured and reported on an attempted breach of some sort, it is only a matter of time.

Vulnerability assessments fit into the same category as penetration testing, except that vulnerability assessments tend to be more focused on the internal network as opposed to external facing assets. It is for these reasons that BUI brings you NettProtect.

- Vulnerability Scanning
- IP Connected Assets
- Security Posture
- All Network Environments
- Critical Flaw Alerts
- PowerBI Reporting
- Emailed Reports
- Vulnerability Analysis



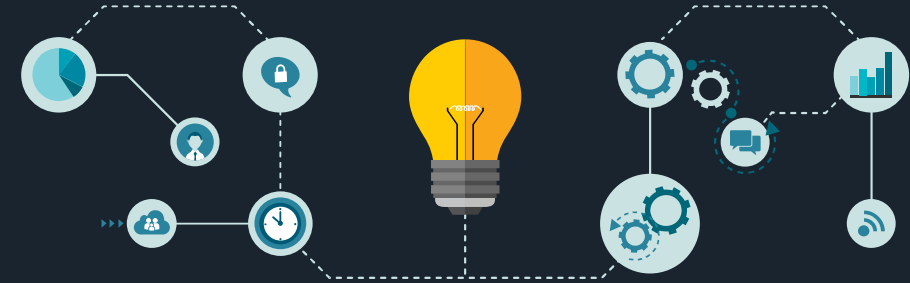
www.nettprotect.com

Managed Services

Simplifying vulnerability detection and management

Overview

Regular vulnerability assessments take an average of results and report on these. Due to limitations such as time constraints and/or the financial implications of a full scale vulnerability assessment, working with an average of information is seen as a good middle marker in terms of where you stand from a vulnerability perspective.



MANAGED SERVICE

We take care of your vulnerability and assessment requirements



ADVISORY SERVICES

Continuously enhancing the security posture of your business



REAL WORLD RISK

Develop intelligence around your assets



SECURITY PARTNER YOU CAN TRUST

Choosing the right security partner should never carry the same stress as having to deal with a security breach



www.nettprotect.com

Dashboard Reporting

What is the issue?



How do we Resolve the Issue

The most effective way to protect against exposure to vulnerabilities is to develop intelligence around your assets via assessment and to harden these systems to minimise your attack landscape.

To achieve this objective, the NettleProtect team are able to deliver both managed and unmanaged vulnerability assessment services. These services provide insight into the kind of vulnerabilities your organisation is exposed to and **develops a platform** for mitigation and/or remediation of these risks.

NettProtect can consolidate and evaluates vulnerability data across your organisation, prioritising security risks and providing a clear view of your security posture, billed monthly as a service.

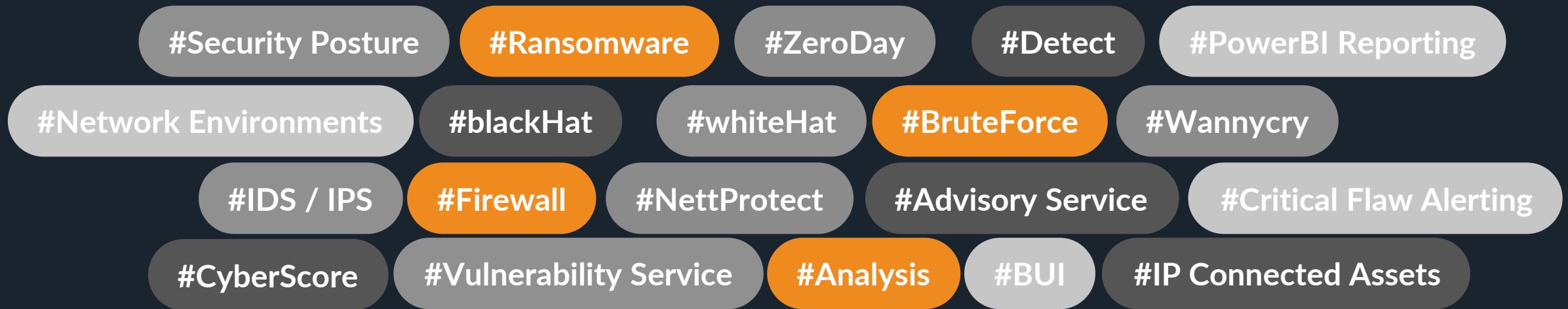
Our Solutions area focus on:

- Advance Analytics
- Compliance
- Asset Identification and Assessments
- Reporting
- Alerting and Proactive Notifications
- Treat Timelines

www.nettprotect.com

Constant vulnerability scanning

This provides you with a complete view of your current exposure



Pricing is based on your vulnerability exposure

This is measured by the number of IP addresses you choose to Nettprotect

South Africa Pricing

R87 pm

Monthly

VULNERABILITY SCANNING

IP CONNECTED ASSETS

SECURITY POSTURE

CRITICAL FLAW
ALERTING

per IP address

International Pricing

\$6 pm

Monthly

VULNERABILITY SCANNING

IP CONNECTED ASSETS

SECURITY POSTURE

CRITICAL FLAW
ALERTING

per IP address

www.nettprotect.com

Contact Us

We have a dedicated team to answer all your questions

Overview

NettProtect is a business division of BUI (www.bui.co.za) which is an award-winning Security Services business.

As part of BUI's ongoing consulting a need for continuous and varied vulnerability scanning solution which is offered as a service rather than a CAPX cost has become evident to both BUI and its clients.

With this in mind BUI has built using industry standard solutions as well as its vast security consultancy practice build a cloud based Artificial Intelligence framework solution which is able to conduct both Inherent and on premise based vulnerability scans.



Address

Second Floor, Microsoft Corporate Hill,
3012 William Nicol Drive, Bryanston
Johannesburg

SA Clients

Tel: 0861 444 284 (Inside South Africa)
Tel: +27 87 740 2400 (Inside South Africa)

International Clients

Tel: +27 11 656 2862

www.nettprotect.com