



**HORIZON**

---

 **EVERTRUST**

## Certificate Lifecycle Management Solution

EVERTRUST Horizon is a distributed digital trust governance and automation solution, that combines decentralized deployment of certificates and central management. Using open protocols along with proprietary APIs, Horizon seamlessly integrates in corporate and cloud environments to manage certificate lifecycle.

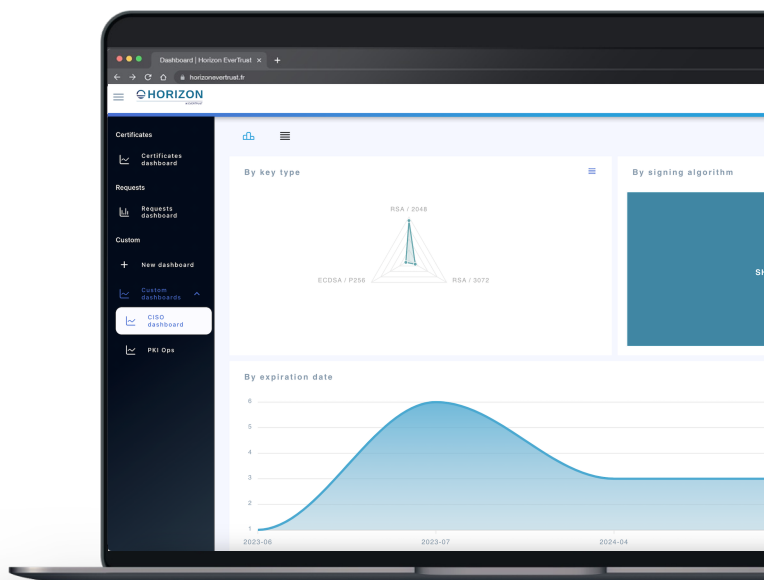
With the HORIZON module, regain control of the lifecycle of your certificates :

- **Quantitatively**

Take a complete inventory of your certificate portfolio.

- **Qualitatively**

With the rating and review functionality, apply an optimal security policy.



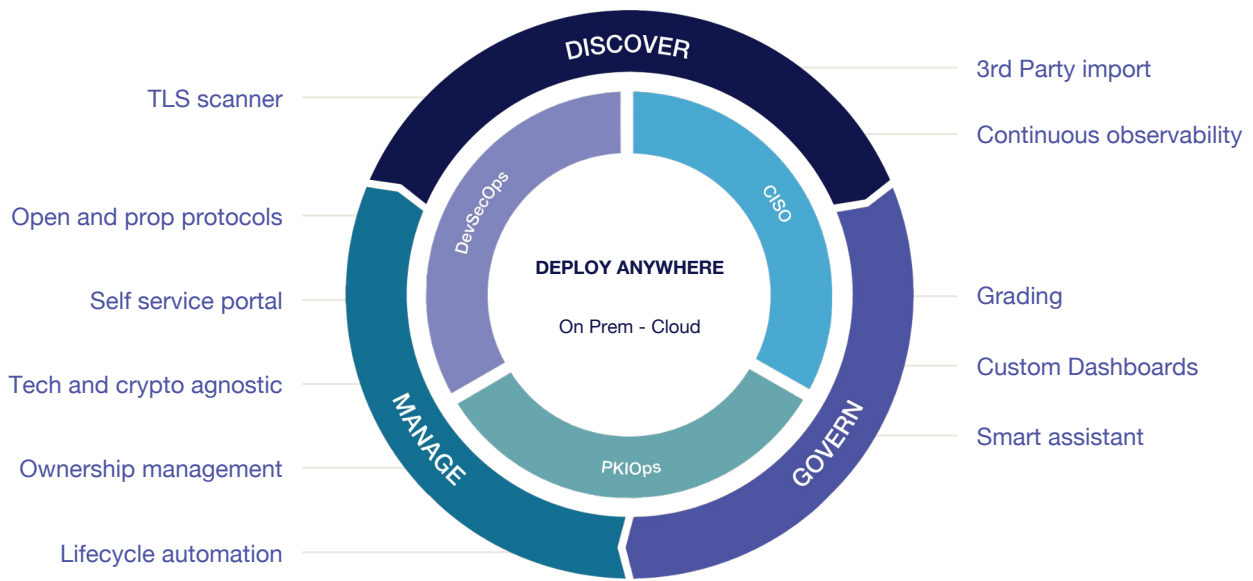
« Thanks to EVERTRUST Horizon we manage to reduce repetitive tasks by 70% »

*Security Manager - Banking*

« We achieved our CAs migration for the entire organization in less than 5 months »

*PKI Operation – Power Industry*

# What is HORIZON?



## DISCOVER

### Scan

Network & local scans

### Import

Vulnerability scanners, DevOps solutions

### Integrations

Existing PKI certificates, certificate vaults

## GOVERN

### CISO view: Compliance

Self-signed certs, rogue CAs, weak algorithms

### PKIOps: What & Where?

Renewal/expiration, revocation, PKIs, ...

### Owner: Who & Why?

Individual/teams, net zone, application or platform

## MANAGE

### Lifecycle

Full support, rich permissions & metadata

### Automation

Renewal & revocation, open protocols (ACME, EST, SCEP, WCCE), proprietary APIs

### Alerting

Expiration & revocation, escalation, multi-channel (email, groupware, ITSM)

## CISO

Provide 360 visibility on certificate through dashboarding and analytics.

Enable decision making to reduce security risks.

## SecOPS

Adapt to a constantly evolving cryptographic world (PQC, obsolescence) by being crypto-agile.

Relieve your operation teams from manual tasks to focus on added value work.

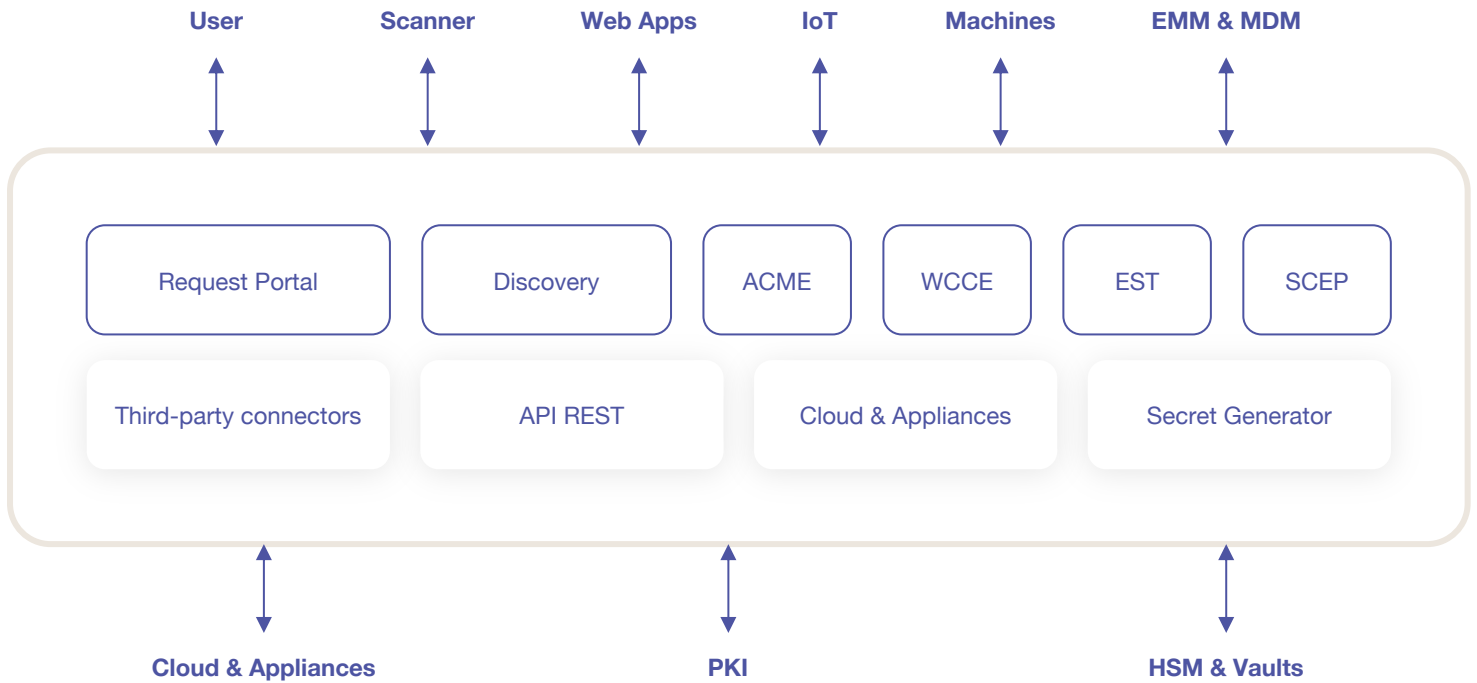
## DevOPS

Provide orchestration for instant certificate provisioning, ready for Kubernetes, Ansible, Terraform, etc.

Get rid of certificate outages.



# How HORIZON works?



## SUPPORTED PROTOCOLS

- ACMEv2 (RFC 8555)
- EST (RFC 7030)
- SCEP (RFC 8894)
- WCCE (Windows auto-enrollment)

## SUPPORTED MDM

- Microsoft Intune
- Jamf Pro
- VMWare Workspace One
- Ivanti MobileIron
- SOTI MobiControl

## SUPPORTED PKI

- Entrust Certificate Service
- DigiCert CertCentral
- GlobalSign MSSL & Atlas
- AWS ACM PCA
- EJBCA
- IDnomic ID PKI & OpenTrust PKI
- Microsoft AD Certificate Services
- Nexus Certificate Manager
- Let's Encrypt
- ZeroSSL
- Sectigo CMS



# Horizon integrations

## SUPPORTED GROUPEWARE & ITSM

- Slack
- Mattermost
- Microsoft Teams
- ServiceNow

## SUPPORTED WEB APPs & LBs

- Apache HTTPD
- Nginx
- Apache Tomcat
- Microsoft IIS
- WildFly
- F5 BigIP
- Lighttpd

## SUPPORTED DEVOPS TOOLS

- Ansible
- Terraform
- Kubernetes/OpenShift
- Azure Key Vault
- AWS ACM
- GCP Certificate Manager

## SUPPORTED MANAGERS

- Cisco
- HP Security Manager
- Fortinet
- Citrix FAS
- And many more...

## Why choose HORIZON?

### Versatile & Reactive

- Single pane of glass
- Intuitive UI to ease configuration & usage

### Sovereignty & Independance

- 100% French company with R&D located in France
- Natively integrated with EU ecosystems (HSMs, eIDAS, etc)

### Ergonomic & User friendly

- REST APIs as a first-class citizen
- Leverage open protocols integrates easily & seamlessly with your ecosystems

### Reduced IT footprint

- Non-intrusive in clients' ecosystem
- Compatible with complex infrastructure



EVERTRUST - 9 rue Béranger Paris 75003, France  
Campus Cyber - Tour Eria - 5 rue Bellini, 92800 Puteaux  
+33 (0)1 88 32 74 02 | [contact@evertrust.fr](mailto:contact@evertrust.fr) | SIREN 829 602 598 | [www.evertrust.fr](http://www.evertrust.fr)

DATASHEET HORIZON | EVERTRUST 2023