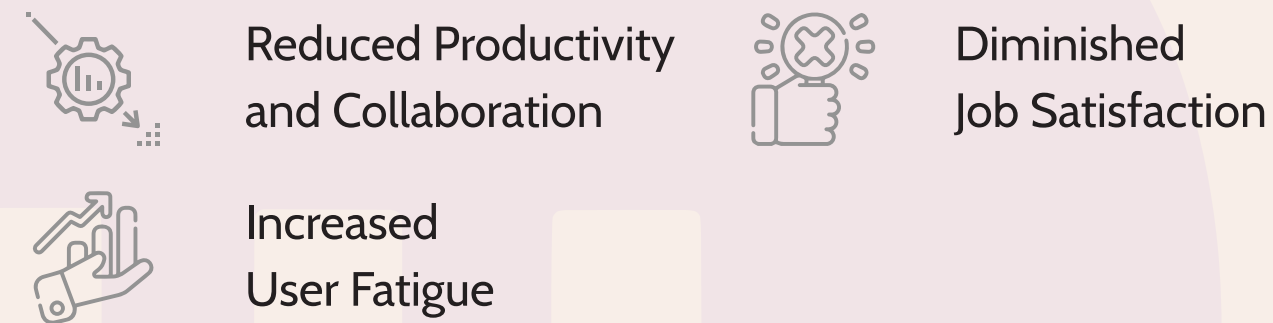


Business Challenges

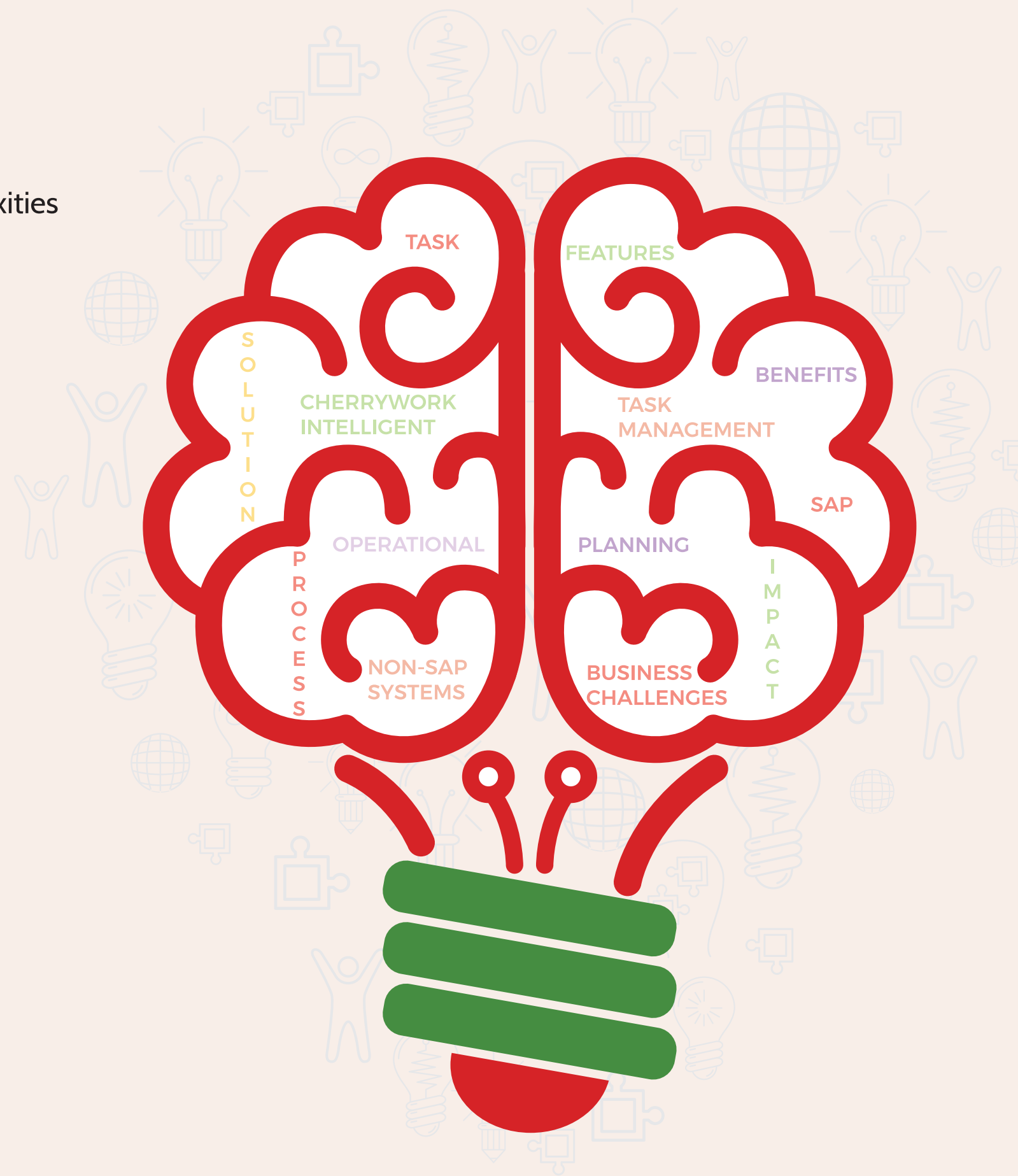


Impact



Features

- Unified workspace with comprehensive view of tasks
- Task Chat for task-based collaboration
- Desktop and mobile application for real-time updates
- Personalized and customized user interface
- Cherrybot, an AI bot with intelligent automation capabilities
- Customized reporting, dashboards and intelligent analytics



Solution

A unified system that gets work done with a one-stop access to business and processes for structured work planning and execution.

Cherrywork Intelligent Task Management

#WorkGetsDone

The Cherrywork Intelligent Task Management (ITM) is a comprehensive solution that consolidates **task, process and work** from **SAP and non-SAP systems** into an effective visual unified workspace.

It seamlessly integrates people, **processes** and systems to deliver rapid value to planning and **optimization**, improved employee productivity, operational efficiency and effectiveness at scale.

Benefits

- Rapid time to value with quick implementation
- Increased effectiveness, better visibility, data driven decisions
- Built in SAP and non-SAP system integrations
- Low code/no code system with guided process for quicker adoption
- Automated workflows coupled with in-app notifications
- Enterprise grade security to ensure high data safety



Cherrywork Intelligent Task Management

Website: cherrywork.com | Email: talk2us@cherrywork.com