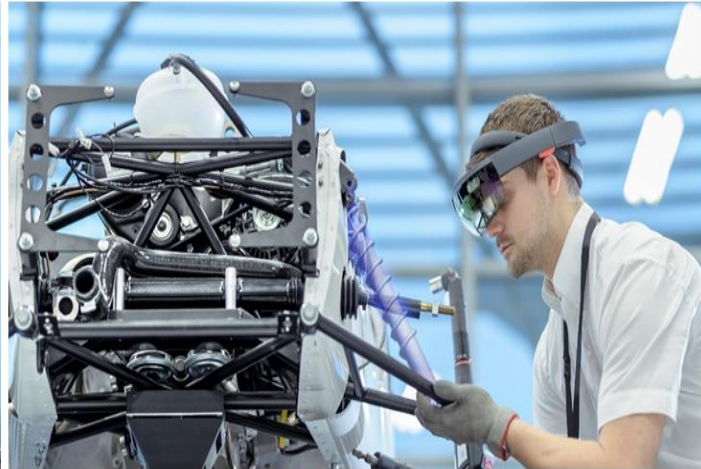




Power Platform 4-Week Consulting

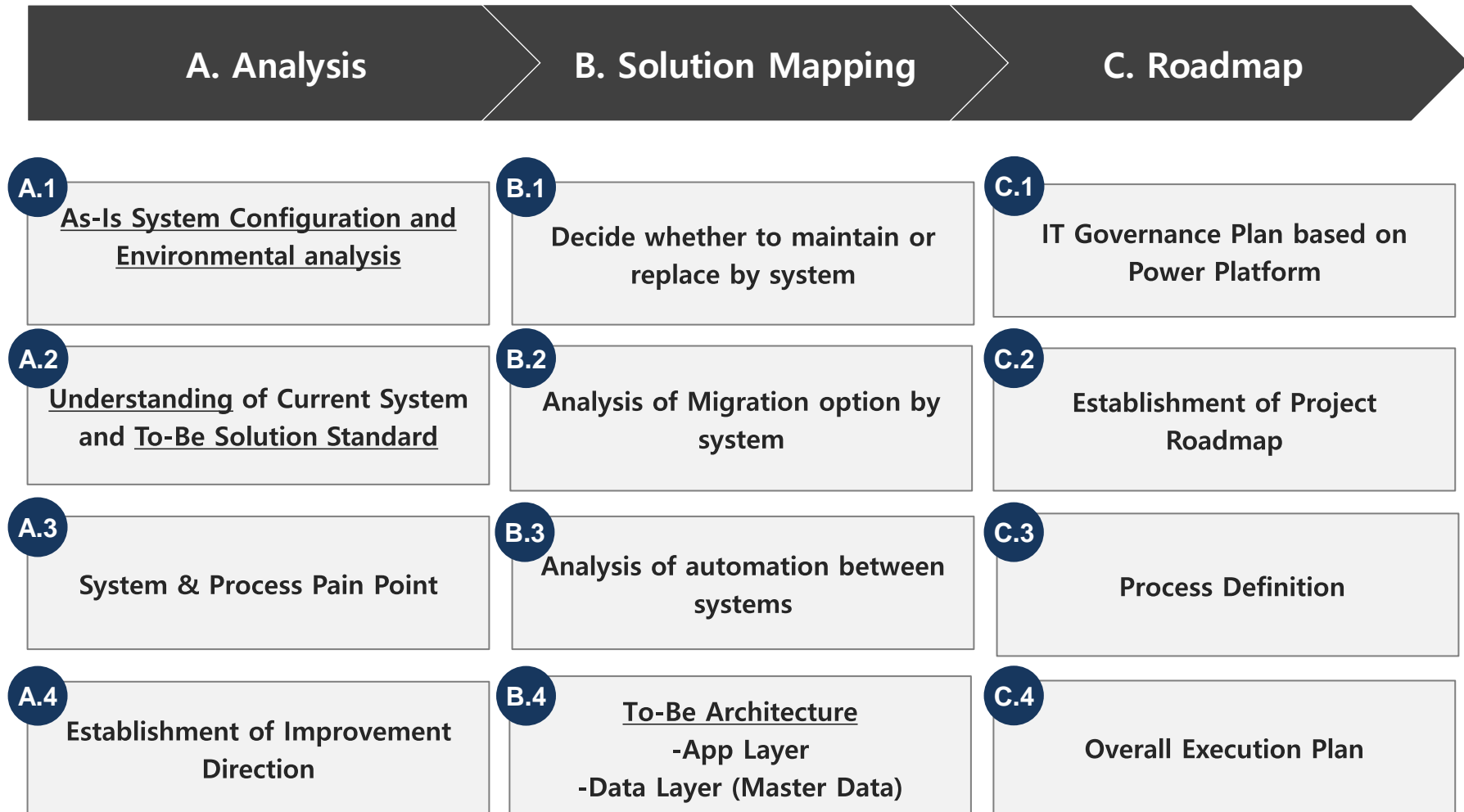
June 2023



DEX CONSULTING

Power Platform Consulting Approach

- ❑ Consulting service will be divided into three phases: Analysis, Solution Mapping, and Roadmap.



Power Platform Consulting Area

□ E2E Office Work Automation through Power Platform(RPA), analysis and sharing through Visualization



Power Automate

Process Automation

Automation simple & repetitive work through RPA



Power BI

Visualization & Analytics

Drawing Insight through visualization



Power Apps

Sharing & Storing

Extended Automation through data and visualization material sharing



Power Virtual Agents

On-line Communication

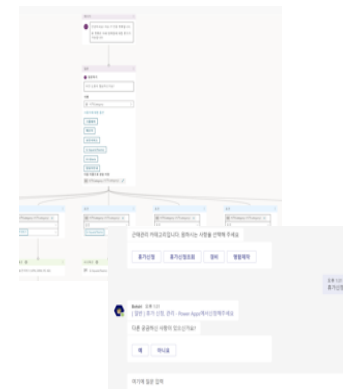
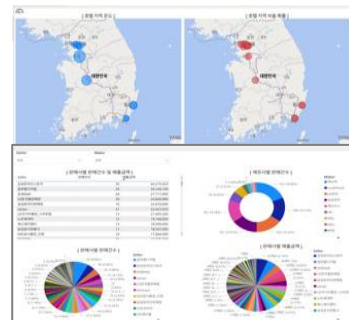
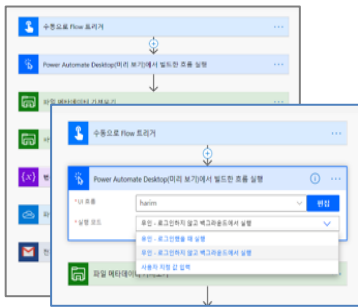
Combination of specific Workflows and chatbot system



Power Pages

Customer Services

Web sites connected to internal legacy system and data



NO	NAME	TEL	MAIL	TEL	MAIL
1	김민준	010-1234-5678	kimminjun@naver.com	010-1234-5678	kimminjun@naver.com
2	이서연	010-9876-5432	iseoyeon@naver.com	010-9876-5432	iseoyeon@naver.com
3	박지민	010-5678-9012	parkjimin@naver.com	010-5678-9012	parkjimin@naver.com
4	정민준	010-3456-7890	jeongminjun@naver.com	010-3456-7890	jeongminjun@naver.com
5	최지민	010-2345-6789	choejimin@naver.com	010-2345-6789	choejimin@naver.com
6	한지민	010-1234-5678	hanjimin@naver.com	010-1234-5678	hanjimin@naver.com
7	김지민	010-9876-5432	kimjimin@naver.com	010-9876-5432	kimjimin@naver.com
8	이지민	010-8765-4321	leejimin@naver.com	010-8765-4321	leejimin@naver.com
9	박지민	010-7654-3210	parkjimin@naver.com	010-7654-3210	parkjimin@naver.com
10	정지민	010-6543-2109	jeongjimin@naver.com	010-6543-2109	jeongjimin@naver.com
11	최지민	010-5432-1098	choejimin@naver.com	010-5432-1098	choejimin@naver.com
12	한지민	010-4321-0987	hanjimin@naver.com	010-4321-0987	hanjimin@naver.com

Power Platform: Internal Integration

- ❑ Power Platform consists of four parts: Power BI (Data Analytics), Virtual Agents (chatbot), Power Automate(RPA), and Power Apps (App Development)
- ❑ Though each can be utilized separately, by integrating four solutions, synergy effects can be created.

