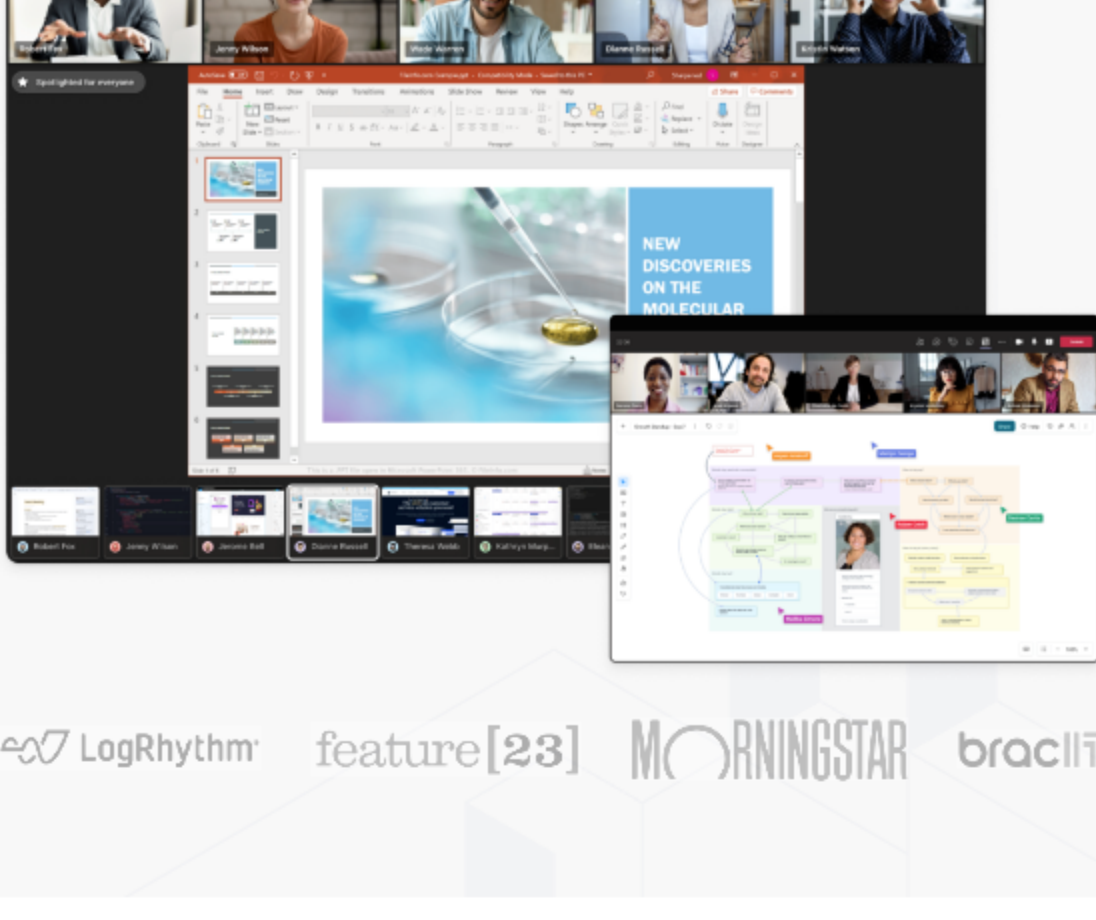


Almost like working together in person

Frameable Core revolutionizes team collaboration in Microsoft Teams, changing the distributed workforce dynamic.

Talk to us



LogRhythm feature[23] MORNINGSTAR braciIT

Benefits

Foster a culture of connection from anywhere

Maximize your hybrid & remote workforce collaboration experience in Microsoft Teams with our enhancements.

Get started

Seamless collaboration

Multiple simultaneous screen shares and digital whiteboards make collaboration as natural as being in the same room.

Increased visibility

Access a centralized dashboard for at-a-glance availability of teammates, making it easier to connect and brainstorm.

Better team morale

See an increase in overall morale when everyone has an equitable collaborative experience.

Features

Built for a collaborative workplace

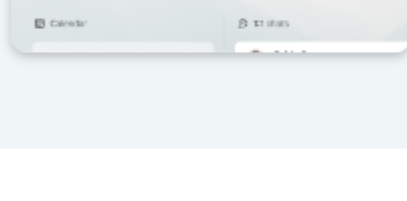
Simultaneous screen share to include everyone

Ensure everyone can see the same information at the same time for a truly collaborative environment.



See Microsoft Teams at-a-glance

Quickly see who's available and foster spontaneous collaborations through a dashboard that unifies Microsoft Teams.



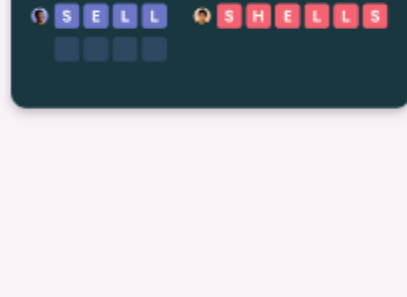
Brainstorm together, no matter where you are

Collaborate in real time with virtual whiteboards and access them within or beyond calls.



Fun games for more engagement

Bond with your team through fun and competitive games designed to enhance team collaboration.



Use cases

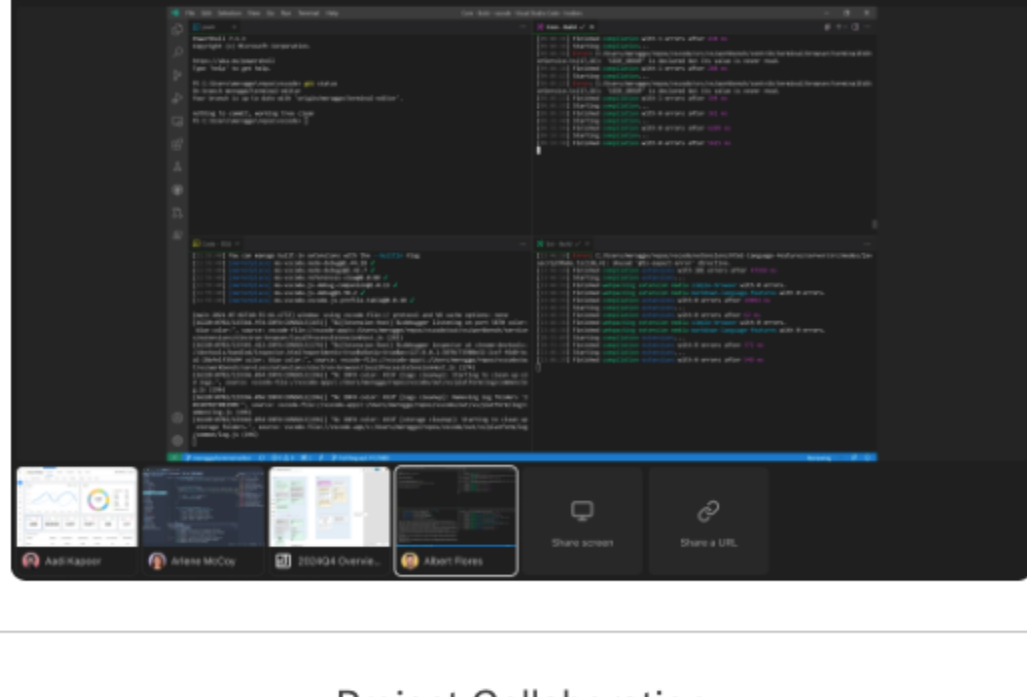
Perfect for remote & hybrid teams

Remote Team Meetings

Remote Team Meetings

Make every participant feel like they're in the room with multiple simultaneous screen sharing and digital whiteboards for collaboration in real time.

Learn more →



Project Collaboration

Team Building

Enterprise

“

Engagement has never been higher

The sense of connection and engagement among our distributed team has never been higher since we started using Frameable.

— Justin, HR Manager

“

Feels like we're working side by side

"With Frameable, it feels like we're all working side by side, regardless of our physical location."

— Laura, Chief People Officer