

The logo for Envision, featuring the word "envisi" in a lowercase sans-serif font, followed by a stylized grey asterisk-like icon, and then the letter "n" in the same font. The background of the top right corner is a solid orange color.

envisi^on



Automate - Manage - Optimize

Integrated Solutions To Meet Your Business Goals

iPortman is integrated Port management solution for Seaports, Terminals handling General Cargo, Bulk, Break Bulk, Liquid, Ro Ro and Container; ICD, CPS, PFT and Logistics Service Providers. Rated as one of the best integrated solutions in the industry.



Envision is the leading IT solution provider for successful enterprises in order to automate, manage and optimize their operations for business excellence and competitive advantage. R&D is headquartered in India, and has expanded internationally to offices within the U.S., Canada, UAE, and Singapore; serving clients across the globe for 14 years. Trust and collaboration are the core principles of Envision. We partner with our customers in order to meet their business objectives and works toward building long lasting relationships.

Envision's Ports and Logistics division has provided solutions for seaports, and terminals, as well as for shipping and logistics service providers globally for over a decade. Our dedicated product development team with SME's and Domain experts work closely with our clients in understanding their business challenges and provide cutting edge solutions.

Envision is a leading EAM solution provider and gold partner for IBM Maximo. We have implemented solutions across the globe for: Oil and Gas, utilities, telecom, transportation, Metro Rail, seaports, airports, facilities and manufacturing. Our smart manufacturing solution on IOT provides: manufacturing integration, energy management, remote monitoring, optimization, and an equipment operations center.

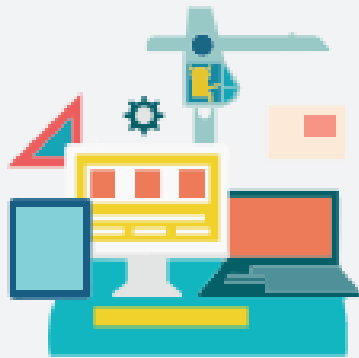
Solutions for Sea Ports, Terminals, ICD, CFS, PFT and Logistic Operations



iPortman – Integrated Port Management Solution to address the end to end functionality of Seaports, Terminals, Transportation and Logistic service providers. Robust solution built on Java independent of Database, operating system, Application server environment with high availability and load balancing, supporting multi language, multi country configurations. With configurable workflows, KPI's and Dashboard tools, audit tracking, scalable, secure; iPortman can handle single organization to multi location configurations.



Rubus is the Industry 4.0 solution to accelerate business in their IIoT journey. Configurable, scalable IIoT platform, helps an enterprise to implement use case based digital manufacturing solution for a quicker return on investment with a proven approach for successful implementation of industry 4.0 solutions.



Equipment Operations Center:

Provides integrated view of all equipment like STS Cranes, RTG, Reach Stacker, Trailer Trucks, Generators, Conveyors and other equipments. This IIoT solution seamlessly integrates with all SCADA, PLC, CANBUS, MODBUS, sensors and other applications. Provides unlimited historian with trending and predictive analytics for performance, operations, condition monitoring and maintenance management.

Energy and Utilities Management:

Our solution helps to measure, monitor, and control to optimize power consumption, utilities across the port and terminal. Integrates with all energy meters and controls remotely all utilities like lighting, power, and energy.

Talk to us:

With long term investment and commitment, envision remains focused on providing solutions to our customers. We provide business consulting, migration of legacy applications, seamless integration within different applications, advanced solutions, and post-implementation support. Our approaches and methodologies are tailor made specifically to our customer needs, budgets and time lines.

OCR & RFID Solutions:

Integrated OCR and RFID solution for Gate operations, Container tracking from entry to exit. Can be seamlessly integrated with existing solutions for faster throughput and reduce turnaround time.

Reefer Container Monitoring:

Fully automated Reefer container monitoring solution for real time monitoring of temperature, CA Information, power status, consumption, alarms, events, PTI and USDA logs. Provides auditable historical data and ability to share real time status to agents and consignee. Reduces potential cargo damage, human errors, improve cargo documentation process and increases customer satisfaction.

Mobile Solutions:

Our Mobile solution enables all field operations in Marine, Wharf side, Yard and Gate operations effectively. Solution can be deployed on any operating systems on Mobiles, Tablets and VMTs. Can be integrated with any of the existing solutions.



Looking forward to partner with you

Write to : sales@envisionesl.com

Visit Us : www.envisionesl.com

www.iportman.com

USA :

Envision Enterprise Solutions America INC
12 Roszel Road, Suite A-204,
Princeton, NJ 08540 USA.
Ph: +1 609 269 2198 Fax: +1 609 228 6378

Canada :

Envision Enterprise Solutions Canada Inc.
439 University Avenue,
5th Floor Toronto, ON M5G 1Y8.
Ph : 1 437-836-3080 Fax No: 1 437-836-3101

Middle East and North Africa :

Envision Middle East Solutions FZ- LLC.
PO BOX # 500415, G01, Building 9,
Dubai Internet city, DUBAI, UAE.
Ph : +971 44456970, Fax : +971 44456971

India, Nepal, Bangladesh, Sri Lanka :

Envision Enterprise Solutions Pvt Ltd.
2nd Floor, Sai Vamsee, #645 Rd No: 36,
Jubilee Hills, Hyderabad, India 500033.
Ph : +91 40 65343853 Fax: +91 40 44455651

Asia Pacific :

Envision Enterprise Solutions Asia Pacific Pte. Ltd.
15 Engorr Street, #08-04
Realty Centre Singapore 079716.
Ph : +65 62950102.

#Talktoenvision
sales@envisionesl.com
www.envisionesl.com