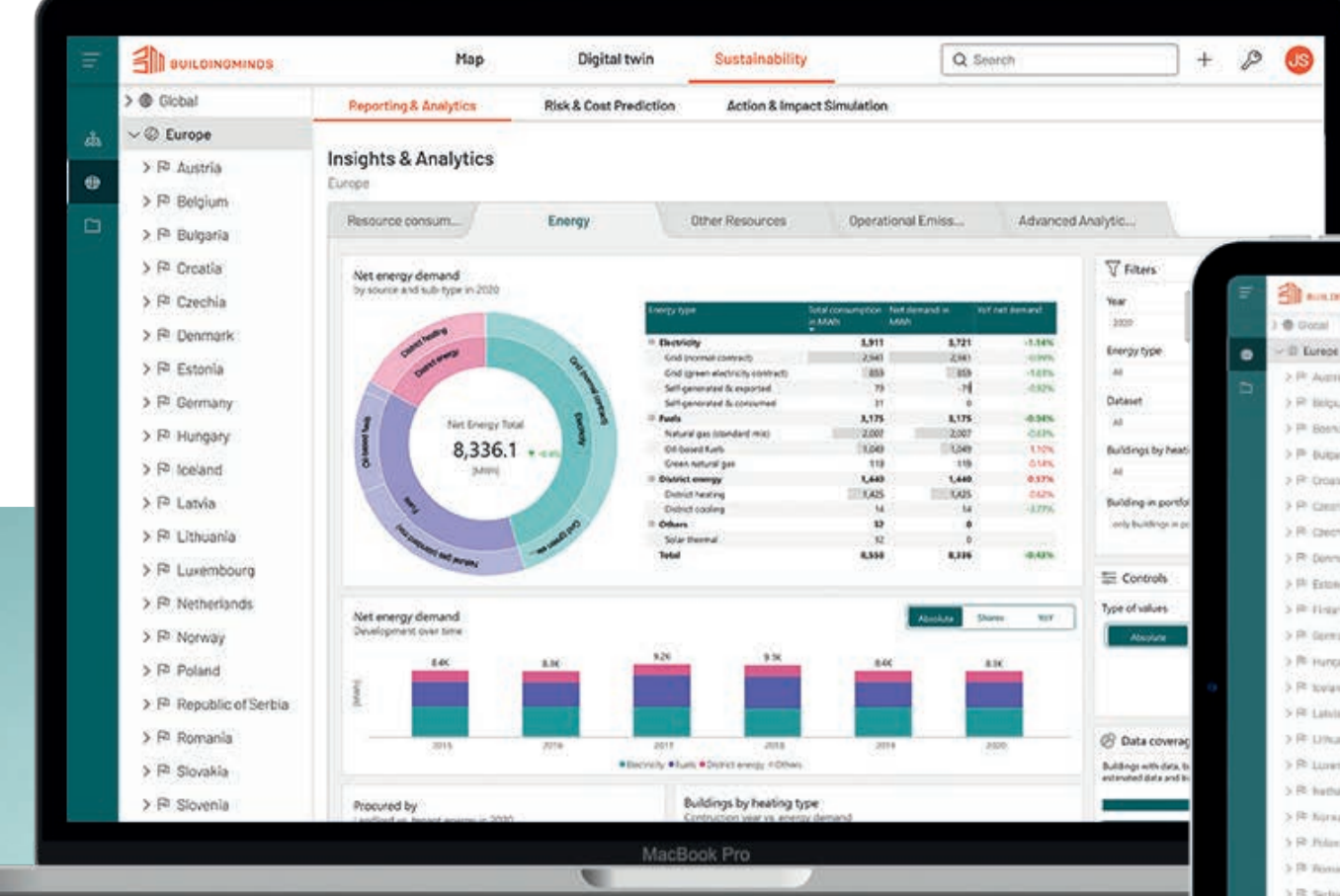


Meet the ESG platform with a Plus.

BUILDING MINDS

NET ZERO HERO



Ready to make better, data-driven decisions?

All data in one place



Automate data gathering and analyze resource consumption and carbon emission across your entire portfolio in one platform.

Automate your reporting



Report to your preferred reporting standards like e.g. GRESB, ECORE.

Benchmark your portfolio



Benchmark your performance against PRI, GRI, SFDR and use CRREM pathways to precisely predict stranding risk.

Turn goals into action

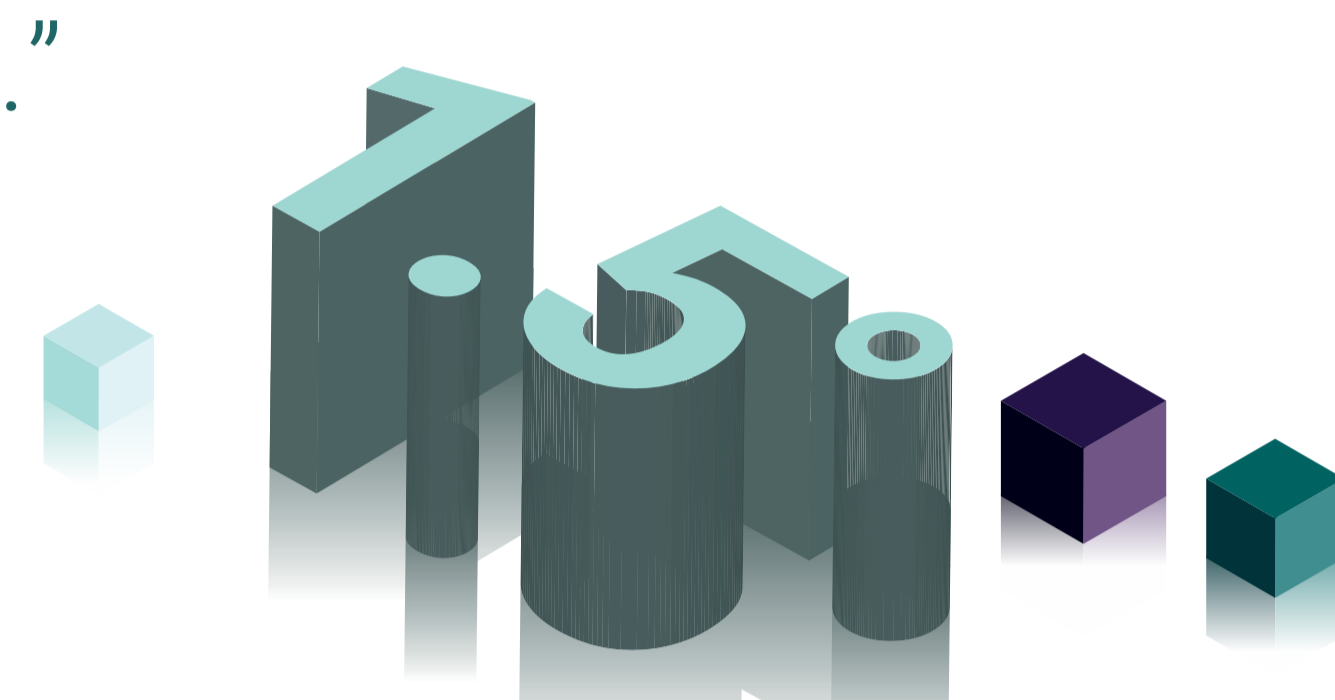


Define your retrofit roadmap based on carbon emissions, future carbon savings, and capital expenditures.

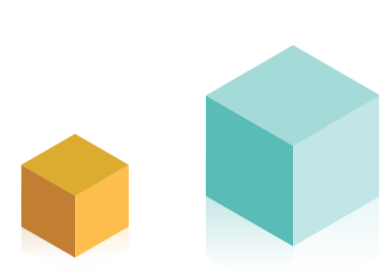


“Together with BuildingMinds, we leverage the power of ESG data to realize effective emission reductions through data modeling and reduction scenario analytics.”

Roger Baumann
COO & Head Product Development
Global Real Estate at Zurich Insurance



Exemplary ESG project scopes

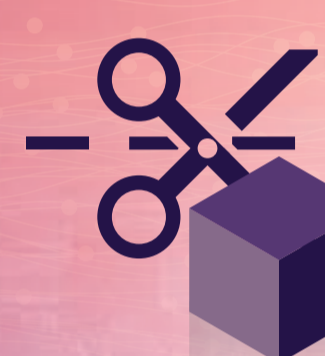


Global insurance provider and sustainability pioneer: More than 1500 buildings worldwide. Use cases: Data integration project with a focus on resource consumptions, carbon footprint calculation, carbon risk analysis, and retrofit simulations.

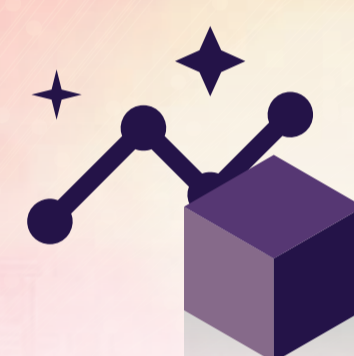


German real estate investment trust: More than 100 buildings in Germany with more than 1.5 million sqm. Use cases: Development of a sustainability reporting platform to support sustainable building management and decarbonization on portfolio level.

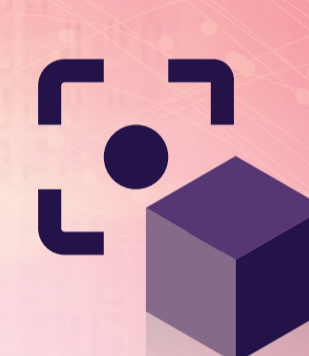
Realize competitive advantage with made to measure data strategies.



Made to measure data strategies

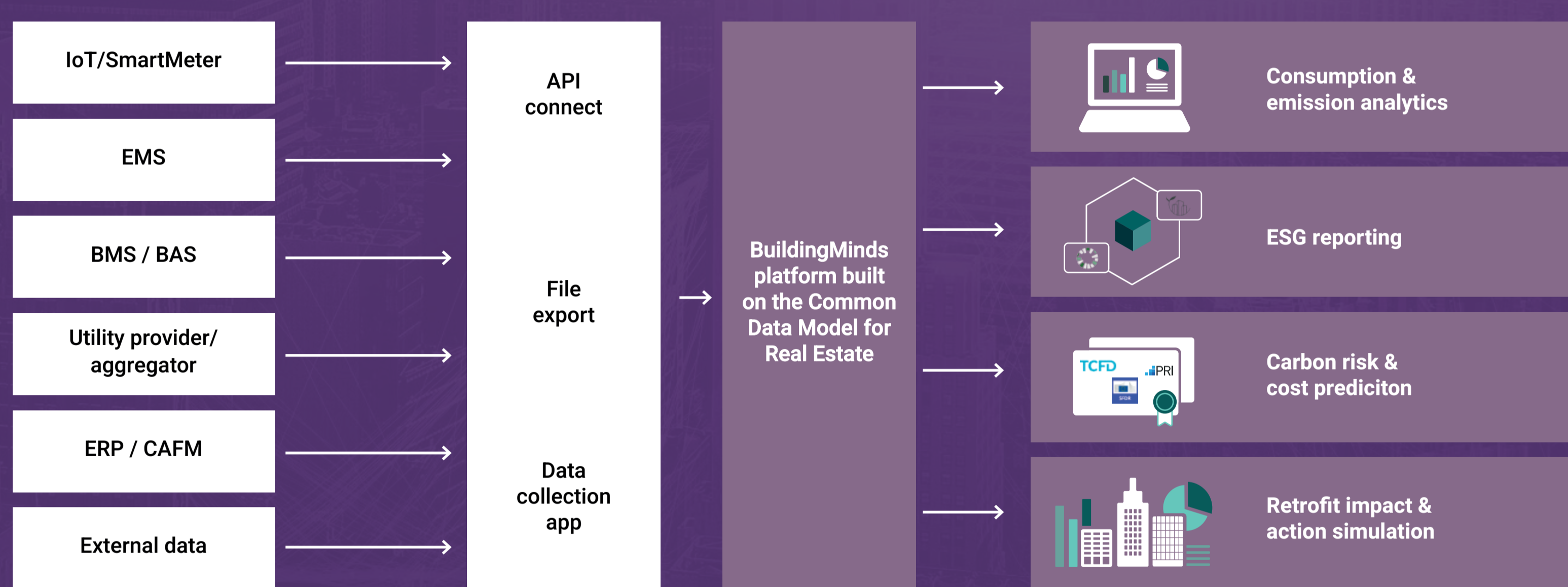


Meaningful analytics



Industry specific data counseling

From data collection to net zero action



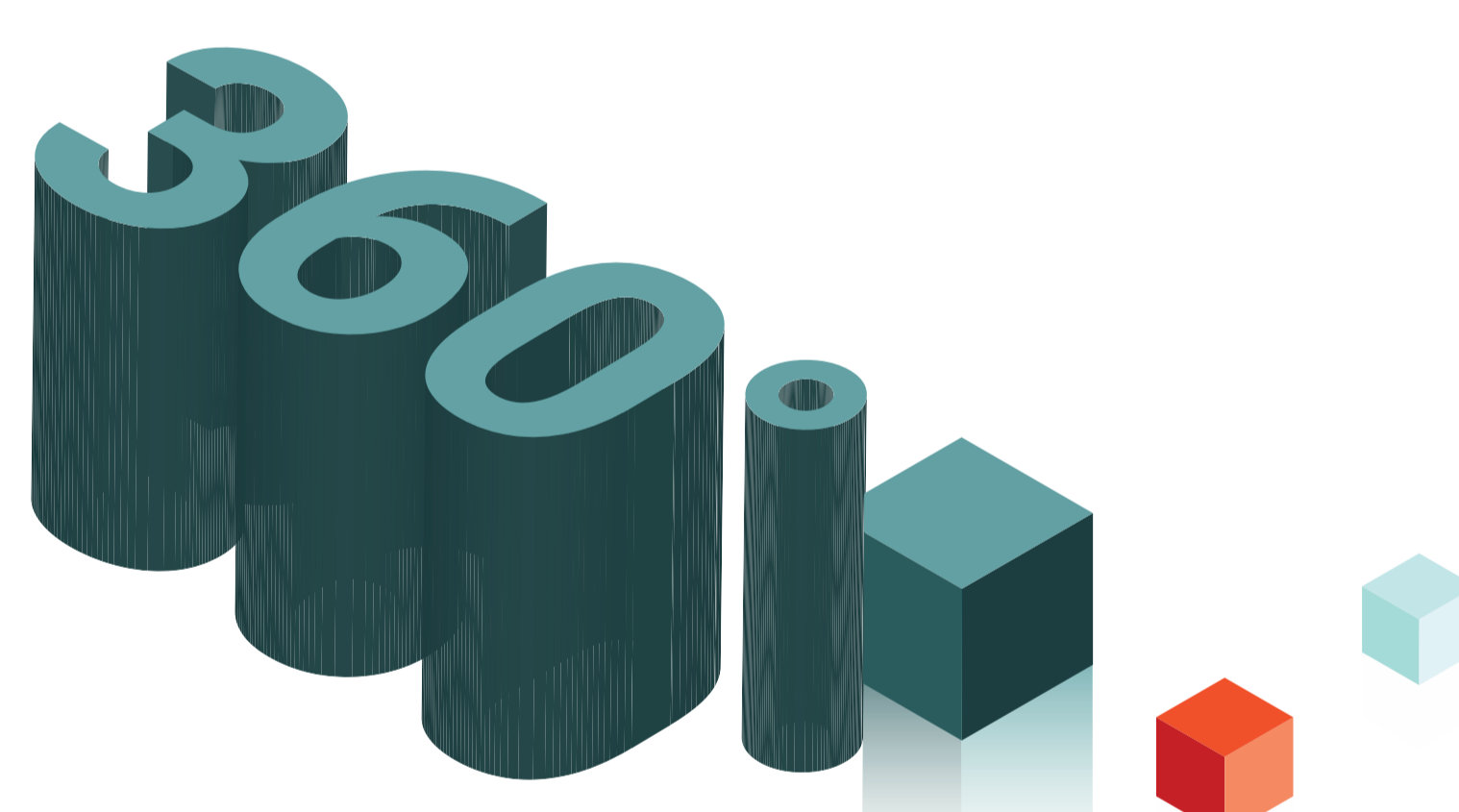
Data Orchestration Service Included
Do you already have a reliable real estate data center or IT experts in your team, and are ready to handle the implementation yourself? Then you're all good with this service.

Data Orchestration Service Advanced
Your IT team does not have capacity and you want us to take the work off your hands? Our team of experts is here to jump in and fully support you with this service where we take care of your required data - wherever it is, however you have it.

Data Orchestration Service Plus
Are you looking for enhanced support on data collection and strategy development? Then you should choose this service that includes everything you get with Advanced as well as enhanced for automated data collection.

Get the data superpowers to advance your business

- Profit from full transparency: Connect any software, system and application to our platform and take data management to a whole new level
- Use your data for more than reporting - from advanced benchmarking to risk calculation and impact analysis
- Build on BuildingMinds' advanced platform technology and realize multiple further use cases such as space utilization or well-being



Cloudbased SaaS



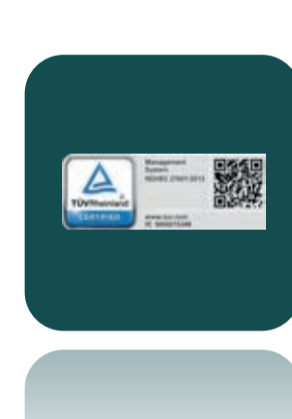
Microsoft Azure services



Full data ownership



Server in Europe



ISO 27001 certified



Single Sign-On



Co-founder of IBPDI



Our technology, domain and digital transformation experts look forward to taking your portfolio and building management to the next level with you! Scan the QR-code and set a meeting with us.



Schindler
Strong backing for long-term innovation
Firmly at our side is Schindler as founding partner and sole investor since our company's establishment in 2019.

Microsoft
A powerful technology partnership
Building on a strategic partnership with Microsoft, BuildingMinds leverages the full potential of Microsoft's leading technology.

Experts from around the world
Our team of around 100 digitalization and domain experts from more than 30 countries is headquartered right in the heart of Berlin.

Ready to make a green move? We're looking forward to empowering you!

